

# CONCERTINO IN SILVER AND BRONZE

Walter Ross

© Walter Ross 1990

**Trombone 1**

## Trombone I

## CONCERTINO IN SILVER AND BRONZE

Walter Ross  
1990

Elegiaco  $\text{♩} = 54$

mute 4 [5] mute open 1

$p$   $mf$   $f$   $p$   $mp$

[10] 3 [15] 5 [20] tubas 1

$f$   $p$

1 [25] 5 [30] 5 [35] tubas  $mp$

2 [40] 5 [45] 5 [50] [55] 5

$f$   $ff$   $p$

## II

Grazioso  $\text{♩} = 54$  (in 1)

4 1 [10] 10 [20] 1 Flute 4

$p$

3 [30] 9 horn tubas 1 [40] 5  $mf$

$mf$   $f$   $mf$

1 [50] 1 9 [60] 7

Flute

euph. tuba 3 [70] 1  $p$  cresc.  $f$   $v.s.$

burlando 2 3

2. 1st horn Trb. I

[80] 5 2 [90] mf

[100] mp cresc. f cresc. ff 2 3

[110] 1 1 2 1 ff

[120] 1 1 2 1 1 1  $\text{♩} = \text{♩ in 3} (\text{♩} = 162)$  f mf mf mf mf

[130] 2 3 4 3 cresc. f f

[140] 3+4 muted 10 [150] 7 Temp 1°  $\text{♩} = 54 (\text{m } 1)$  1st trp. 3 [160] 4 horns tuba 4 [170] p

[180] 8 bells 6 euph. [190] 4 3 mp

[200] mp f mp f

[210] (9) mp f mute 4

[220] mute open 1 1 poco rit. mf



2

10

20

30

40

50

60

70

80

90

7

*f*

*ff*

*f*

*f*

*f*

*p*

*p*

*mf*

*rit.*

*f*

*mp*

*cresc.*

*f*

*a tempo (d=72)*

*ff*

*mf*

*p*

*mp*

*poco rit.*

*a tempo (d=72)*

*mf*

*f*

*cresc.*

*mp*

*meno mosso d=72 religioso*

*poco accel.*

4. poco a poco  
accel al....

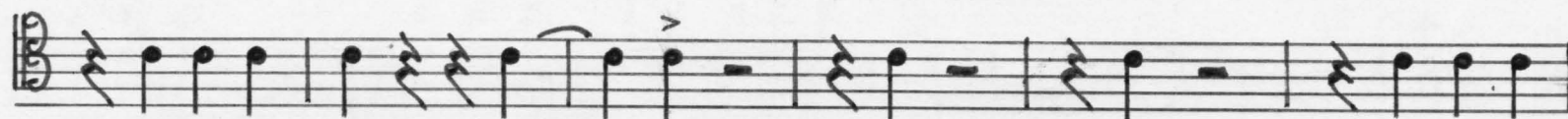
100

... Tempo 1° d = 108

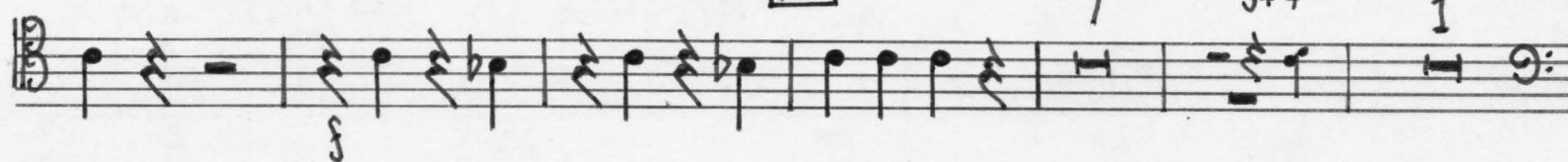
Trb. I



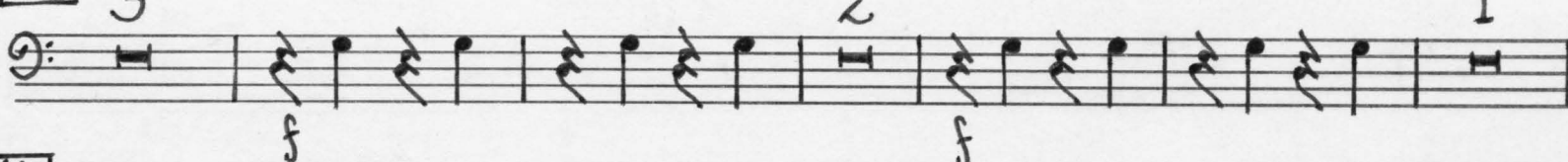
110



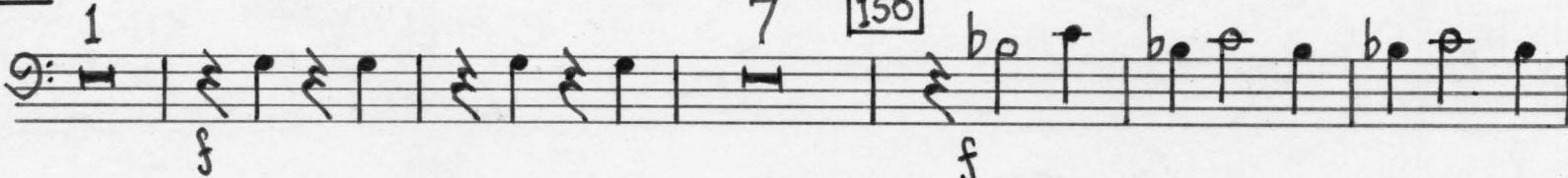
120



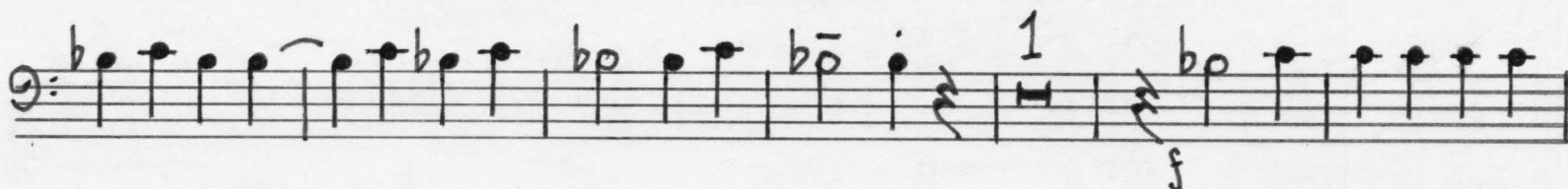
130



140



150



160

