

ÉTUDES A DEUX
FOR
TWO TROMBONES

Trombone 1

WALTER ROSS

Etudes A Deux

1

Trombone 1

for

Two Trombones

I

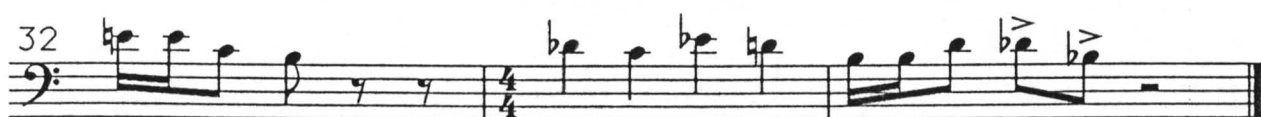
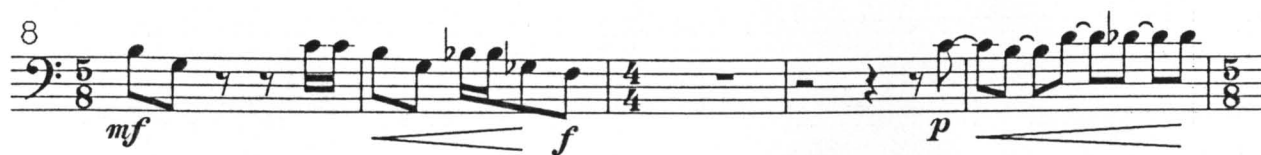
Composed by Walter Ross
for Per and Kjetil Brevig

Allegro moderato (in 2)



II

Trombone 1

Maestoso*♩ = ♪ sempre*

III

Allegro

♩ = 120

1 *mf*

4

7 *f*

10 *mf*

13 *p*

16 *mf*

19 *f*

22

25 *cresc. . . ff*

Allegro festivo ♩ = 108

IV

Section IV consists of seven staves of music in bass clef, 2/4 time. The key signature has two flats (B-flat and E-flat). The tempo is *Allegro festivo* at 108 beats per minute. The dynamics are marked as follows: *f* (forte) at measure 1, *mf* (mezzo-forte) at measure 9, *p* (piano) at measure 17, *f* at measure 23, *p* at measure 27, *mf* at measure 31, *f* at measure 39, and *p* at measure 46. The section ends with the instruction *niente* (diminuendo to nothing) at the final measure.

V

Maestoso ♩ = 60

Section V consists of three staves of music in bass clef, 4/4 time. The key signature has two flats (B-flat and E-flat). The tempo is *Maestoso* at 60 beats per minute. The dynamics are marked as follows: *mf* (mezzo-forte) at measure 1, *f* (forte) at measure 4, *p* (piano) at measure 8, *mf* at measure 12, *f* at measure 16, *ff* (fortissimo) at measure 20, *f* at measure 24, *mf* at measure 28, *p* at measure 32, *mf* at measure 36, *f* at measure 40, *mf* at measure 44, *f* at measure 48, and *ff* at measure 52.

Trombone 1

5

VI

Allegretto ♩ = 72

1 *mf*

5 *f* *p*

10 *mf*

15 *f* *ff*

20 *f* *ff* *p*

26 *mf*

31 *f* *ff*

VII

Allegro con Bravura

♩ = 108

1 *mf*

9 *f* *ff* *f* *mf* *mp* *f*

18 *ff* *mf* *f* *mp*

27 *f* *ff*

VIII

Trombone 1

1 *Lestamente* ♩ = 120

p

mf

mf *f*

mp *mf*

p

poco a poco cresc *mf*

ff

IX

1 *Mesto* ♩ = 72

mp *mf*

f *mf* *p*

X

con fuco ♩ = 132

1 *f*

8 *ff* *f* *mf*

16 *f*

21 *ff* *f*

26

32 *sfz* *ff* *f* *p*

39 *mf* *p*

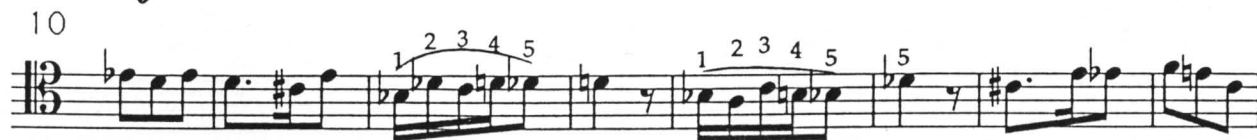
46 *mf* *f* *p*

53 *mf* *f* *mf* *p*

61 *mf*

66 *f* *ff*

XI

1 *Allegretto scherzando* ♩. = 66

XII

Capriccioso ♩. = 90