

CONCERTO
for
EUPHONIUM, SYMPHONIC
BRASS AND TIMPANI

WALTER ROSS
1988

B \flat Trumpet 1

CONCERTO FOR EUPHONIUM, SYMPHONIC BRASS AND TYMPANI

WALTER ROSS

(DRAMATICO $\text{♩} = 72$) **I.**

B♭ TRUMPET 1

(A) 10

(B) 20

(C) (ALLEGRO ANIMATO $\text{♩} = 108$)

(D)

(E) 50

(F) 70

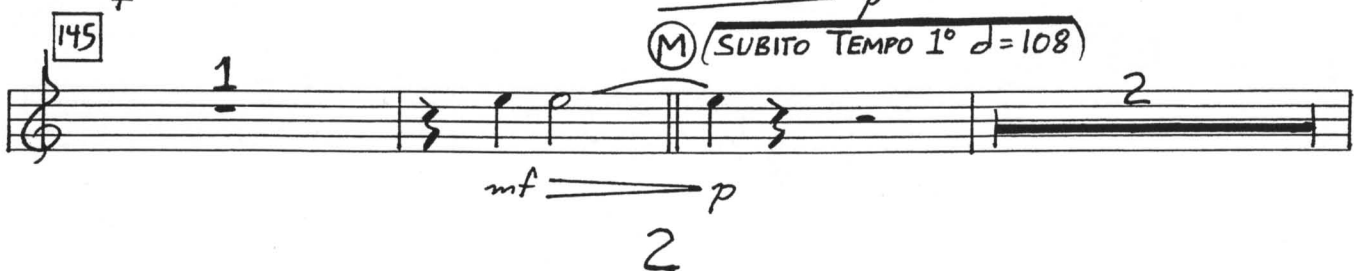
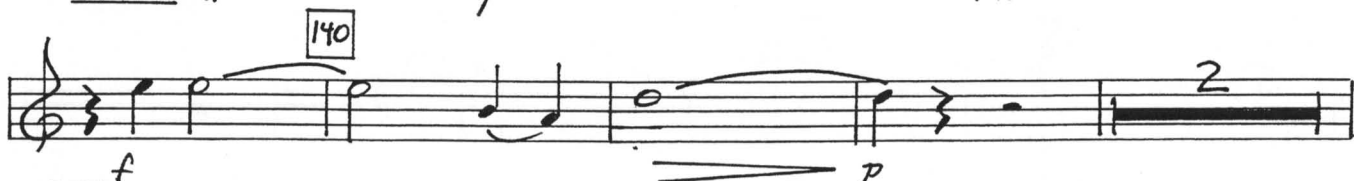
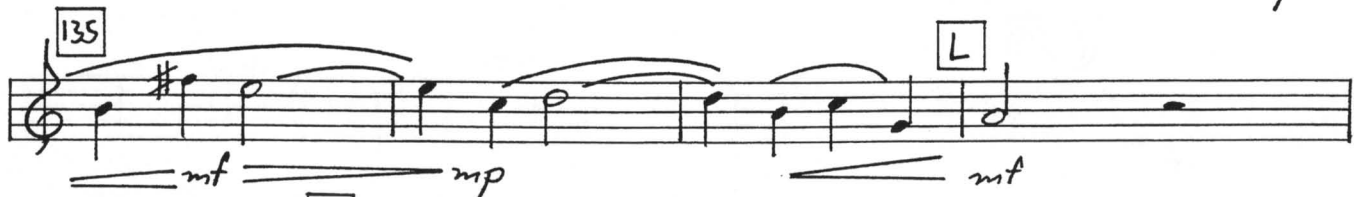
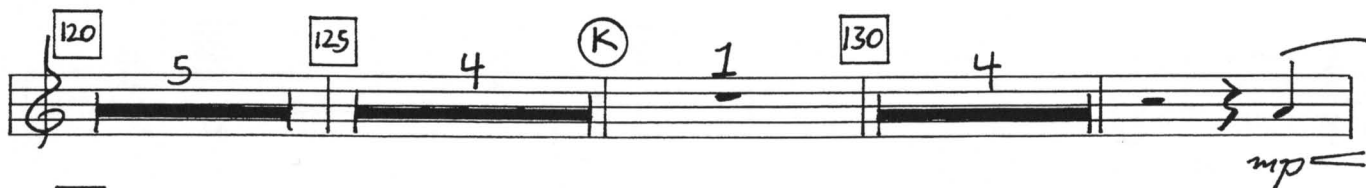
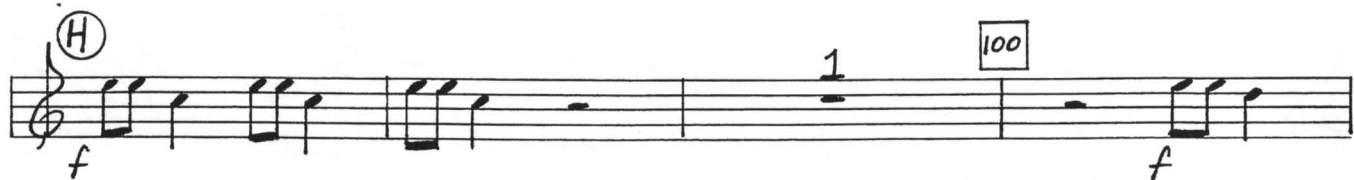
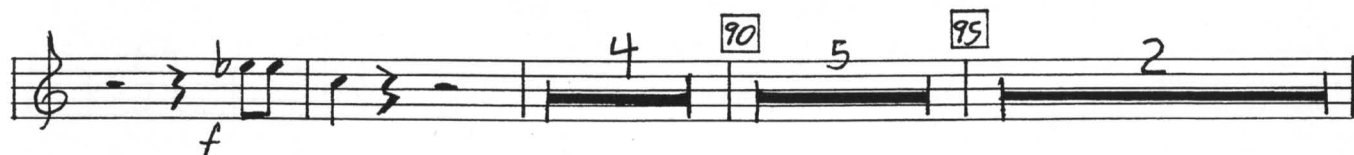
(G) 80

5 **15** **25** **30** **35** **40** **45** **55** **60** **65** **75**

4 **5** **1** **4** **4** **1**

f **ff** **mf** **f**

B♭ TRUMPET 1



Handwritten musical score for B♭ Trumpet 1, measures 150-215. The score includes various musical notations such as notes, rests, slurs, and dynamic markings (f, sfz, cresc., ff). It also features rehearsal marks (N, P, Q, R) and measure numbers in boxes.

Measures 150-160: Starts with a five-measure rest, followed by a half note G4, quarter notes F#4, E4, D4, and a half note C4. Measure 160 has a rehearsal mark (N) and a forte (f) dynamic.

Measures 165-175: Continues with a half note B3, quarter notes A3, G3, F3, and a half note E3. Measure 170 has a rehearsal mark (O). Measures 175-180 have a four-measure rest, followed by a five-measure rest.

Measures 180-190: Starts with a two-measure rest, followed by a half note D4, quarter notes C4, B3, and a half note A3. Measure 185 has a rehearsal mark (P) and a forte (f) dynamic. Measures 190-195 have a two-measure rest, followed by a half note G3, quarter notes F3, E3, and a half note D3. Measure 195 has a rehearsal mark (Q) and a forte (f) dynamic.

Measures 195-205: Continues with a half note C3, quarter notes B2, A2, and a half note G2. Measure 200 has a rehearsal mark (R). Measures 205-210 have a half note F2, quarter notes E2, D2, and a half note C2. Measure 210 has a forte (f) dynamic.

Measures 210-215: Continues with a half note B1, quarter notes A1, G1, and a half note F1. Measure 215 has a forte (f) dynamic. The score ends with a double bar line.

Bb TRUMPET 1

(POLO ADAGIO $\text{♩} = 60$)

II.

1 $\hat{\circ}$ $\hat{\circ}$ $\hat{\circ}$ 5 1

p

$\hat{\circ}$ $\hat{\circ}$ 1 10 $\hat{\circ}$

p mp mf p p mf

$\hat{\circ}$ (A) 1 15 $\hat{\circ}$

mp p mp f mf

(A1) 20 (A2)

p mf

25 (A3) 30 (A4)

p f

35 (poco rubato) (B) 40 (In TEMPO GIUSTO)

mf p mf f

(C) 45 1

mf p pp p

50 1

pp

(C1) 55 4

mp

(D) 60 (rit.)

mp mf mf mp p pp

III.

(ALLEGRO GIOIOSO $\text{♩} = 96$ (IN 1))

Handwritten musical score for Bb Trumpet 1, Part III. The score consists of 10 staves of music in 3/8 time. It includes various musical notations such as notes, rests, slurs, and dynamic markings. Fingerings are indicated by numbers in boxes. Performance instructions like 'MUTE', 'OPEN', and 'cresc.' are included. The piece ends with a double bar line and a final measure.

Staff 1: 9, 10, 7, (A) (+EUPH.), 20, 10, 30, 6, (B), 7b, 7b, 7b, f

Staff 2: 40, 2, (C), mf

Staff 3: 50, (MUTE) (D), 60, 10, 70, 7

Staff 4: (E) (MUTE), p, 80

Staff 5: 90, 3, (F), 1, (MUTE), mf

Staff 6: 100

Staff 7: (G) (OPEN), 5, 110, 10, (OPEN), 120, 2, (H), 4, (J=h), mf, f

Staff 8: (I) (J=h), 130, 10, 140, 7, (J), 150, mf, cresc. ---

Staff 9: f, cresc. ---

Staff 10: (K), 160, 4, 3, ff, f

Bb TRUMPET 1

Handwritten musical score for Bb Trumpet 1, measures 170 to 260. The score is written on a single staff with a treble clef and a key signature of one sharp (F#).

Measures 170-180: Starts with a circled 'L' and a box '170'. The melody is marked *p* (piano). Measure 180 has a circled '5' and a box '180'. Measure 181 has a circled '1'.

Measures 182-190: Continuation of the melody, marked *p*. Measure 190 has a circled 'M' and a box '190'.

Measures 191-200: Features a crescendo from *mf* to *f*. Measure 191 has a circled 'P=D' and a box '190'. Measure 192 has a circled 'P=D' and a box '200'. Measure 200 has a circled '1'.

Measures 201-210: Continuation of the melody, marked *f*. Measure 210 has a box '210'.

Measures 211-220: Continuation of the melody, marked *f*. Measure 220 has a circled 'N' and a box '220'.

Measures 221-230: Continuation of the melody, marked *mf*. Measure 230 has a circled 'O' and a box '230'.

Measures 231-240: Continuation of the melody, marked *f*. Measure 240 has a circled 'P' and a box '240'.

Measures 241-250: Continuation of the melody, marked *f*. Measure 250 has a box '250'.

Measures 251-260: Continuation of the melody, marked *f*. Measure 260 has a box '260'.

The score concludes with a double bar line and a final *ff* (fortissimo) marking.