

CONCERTO  
for  
EUPHONIUM, SYMPHONIC  
BRASS AND TIMPANI

WALTER ROSS  
1988

**Tuba 1**

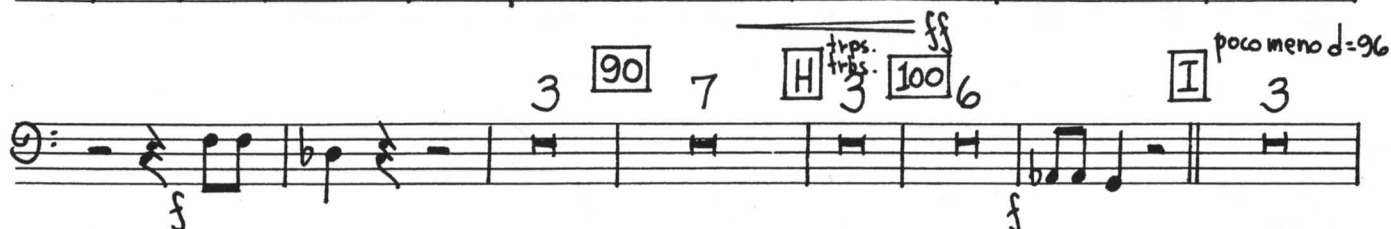
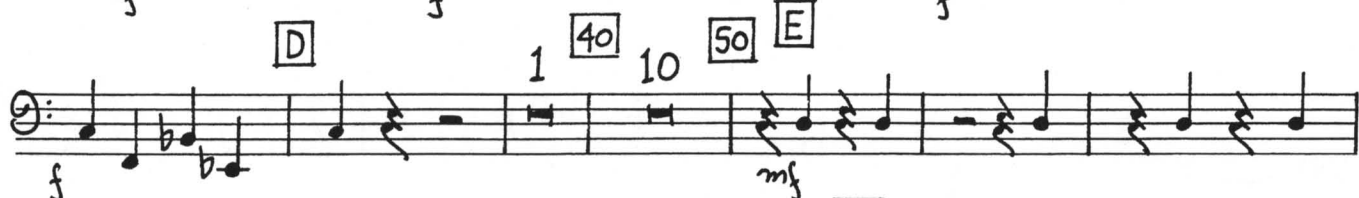
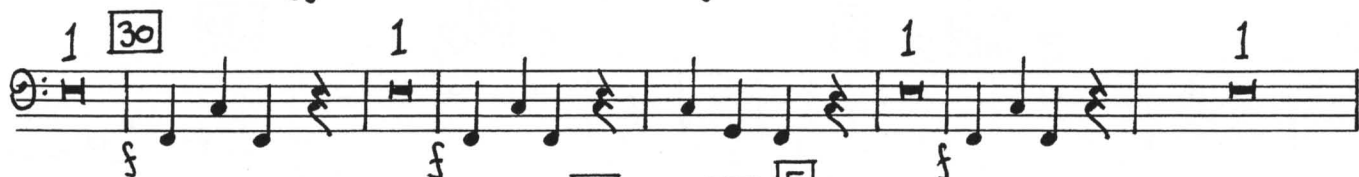
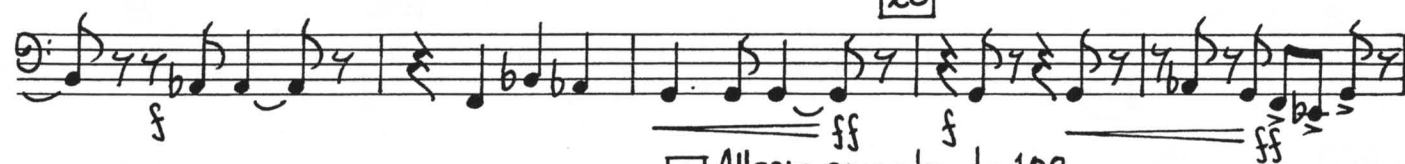
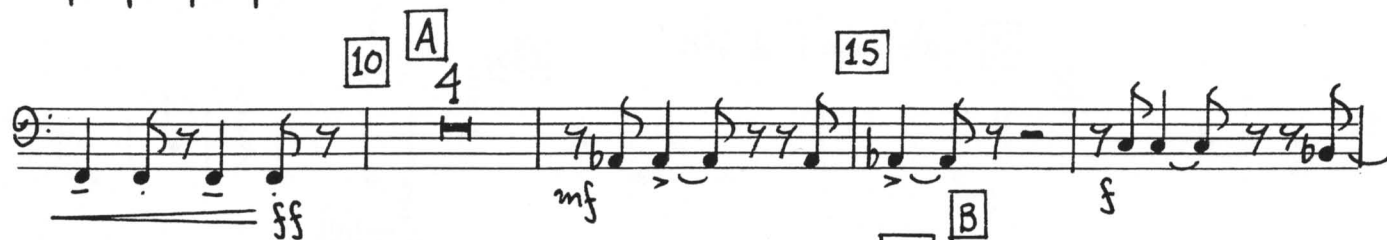
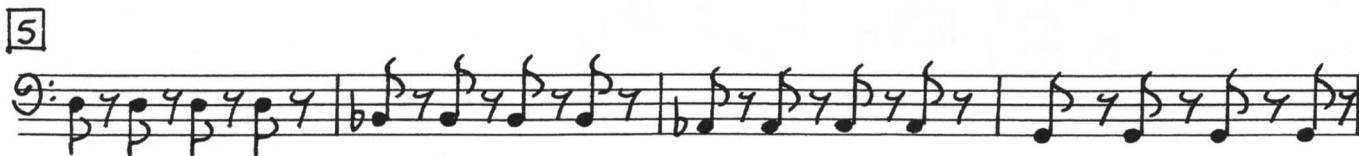
## TUBA I

## CONCERTO FOR EUPHONIUM, SYMPHONIC BRASS, AND TIMPANI

Walter Ross

I  
FANTASIADrammatico  $\text{♩} = 72$ 

secco



2.

Handwritten musical score for a piece, featuring multiple staves with notes, rests, and various performance markings. The score includes dynamic markings such as *mf*, *mp*, *f*, *p*, *sf*, *sfz*, *cresc.*, and *ff*. It also includes tempo and meter markings: *subito tempo 1° d: 108* and *d: 108*. The score is divided into sections labeled with letters in boxes: [110], [J], [120], [K], [130], [L], [140], [M], [150], [N], [160], [170], [O], [180], [P], [Q], [190], [200], [R], and [210]. The notation includes various note values, rests, and articulation marks.

110 *mf* *mp* *f* *p* *sf* *sfz* *cresc.* *ff*

J 120 130 140 150 160 170 180 190 200 210

K L M N P Q R

subito tempo 1° d: 108

d: 108

2 3 4 5 6 7 8 9 10 11 12 13 14 15 16 17 18 19 20 21 22 23 24 25 26 27 28 29 30 31 32 33 34 35 36 37 38 39 40 41 42 43 44 45 46 47 48 49 50 51 52 53 54 55 56 57 58 59 60 61 62 63 64 65 66 67 68 69 70 71 72 73 74 75 76 77 78 79 80 81 82 83 84 85 86 87 88 89 90 91 92 93 94 95 96 97 98 99 100

## II

### Chorale Variations

Poco adagio  $\text{♩} = 60$

Handwritten musical score for "The Rose Tree" in bass clef, 4/4 time. The score includes 60 measures with various musical notations, dynamics, and performance instructions. Measure numbers 1, 5, 10, 15, 20, 25, 30, 35, 40, 45, 50, and 60 are boxed. Section markers A, B, C, and D are also boxed. Dynamics include mf, mp, p, and pp. Performance instructions include "poco rubato" and "tempo giusto". The piece ends with a double bar line at measure 60.

### III cherzo

Allegro giocoso  $\text{♩} = 96$  (in 1)

Allegro giocoso ♩. = 96 (in 1)

III scherzo

9 10 2 2 2

A 20

3 1 20 2

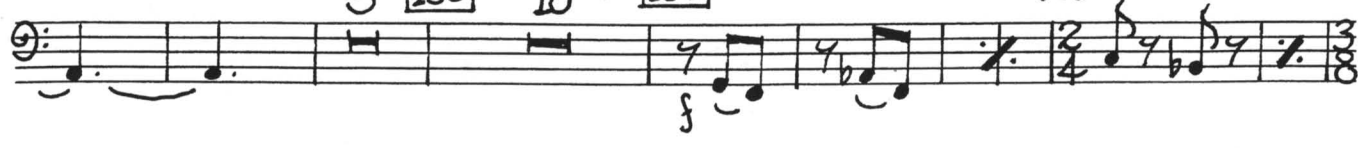
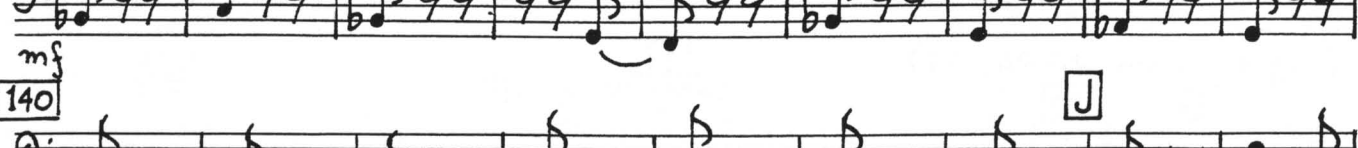
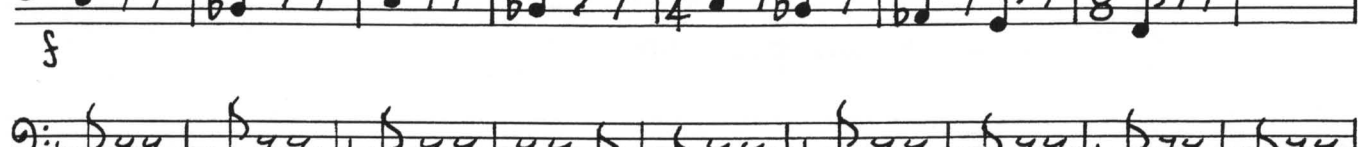
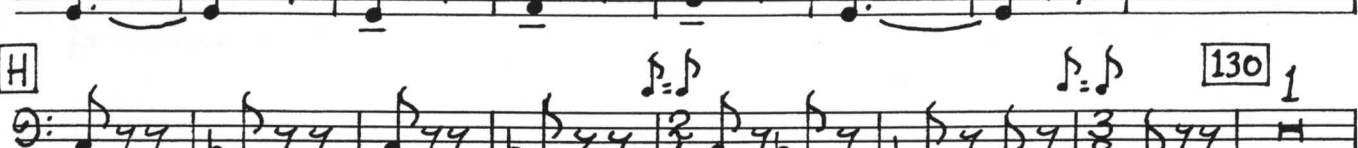
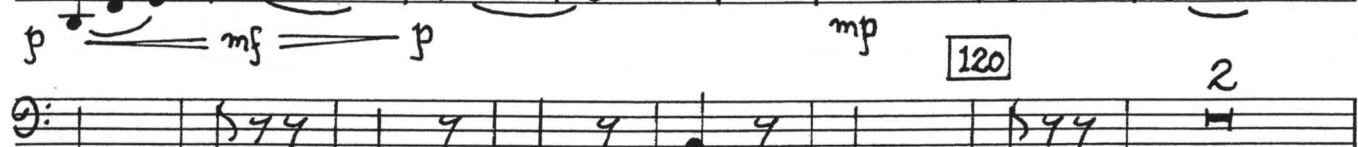
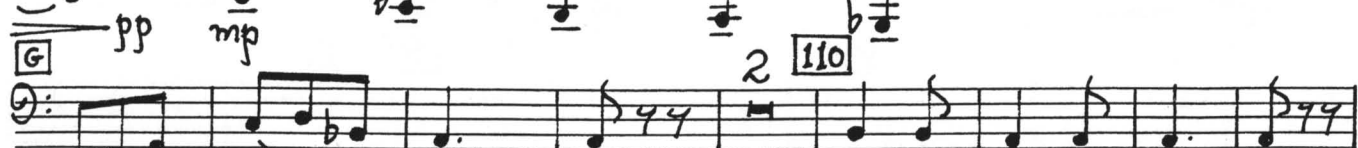
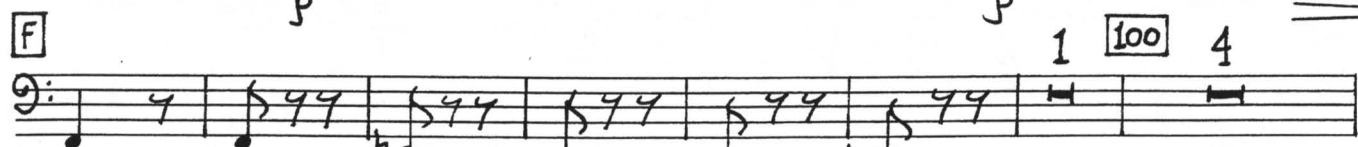
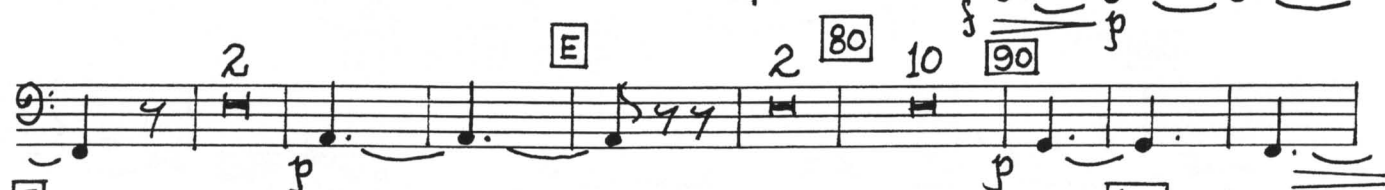
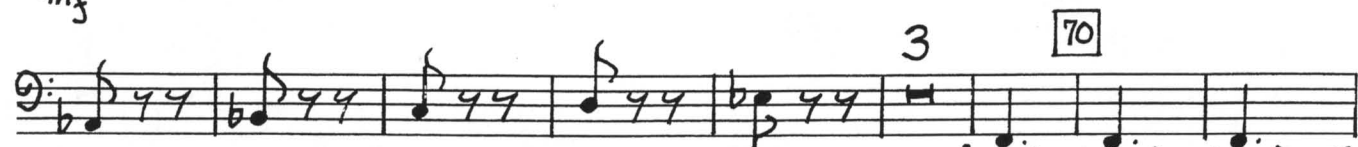
B 40 C 8 50 3

mf

V.S.

4. [D]

[60]



Handwritten musical score for a single melodic line, likely for a guitar or piano. The score is written on six staves, each containing a series of notes and rests. The notation includes various musical symbols such as clefs, time signatures, and dynamic markings.

The score is divided into measures, with measure numbers 200, 210, 220, 230, 240, 250, and 260 indicated in boxes above the staves. The notation includes various musical symbols such as clefs, time signatures, and dynamic markings.

Measure numbers and other markings include:

- Measure 200: 4, 1, 1, 5, 4, 1
- Measure 210: 5, 4, 1
- Measure 220: 1, N, 220
- Measure 230: 230, 3
- Measure 240: 240, P, 3, 1, 1
- Measure 250: 5, 250, 7, 2, 3, 4, 5, 2
- Measure 260: 260, 2

Dynamic markings include *f* (forte), *mf* (mezzo-forte), *cresc.* (crescendo), and *ff* (fortissimo). The score concludes with a double bar line.

