

# SHAPES OF KLEE

(Brass Trio No 4)

Walter Ross  
1995

**B $\flat$  Trumpet**

# B<sup>b</sup> Trumpet

## I

Allegro di bravura  $\text{♩} = 144$

7

16

24

31

39

46

55

62

69

**A**

**B**

**C**

**D**

**E**

**F**

**G**

*f*

*2*

*3*

*4*

*5*

*mp*

*sfp*

*sfpz*

*p*

*mf*

*mute*

*open*

*mf*

*f*

*mf*

*sfp*

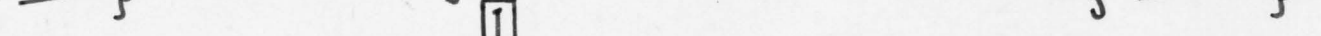
*1*

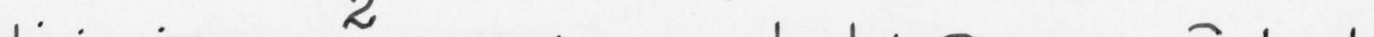
*mf*

*1*

*2*



87 

102 

129 

138

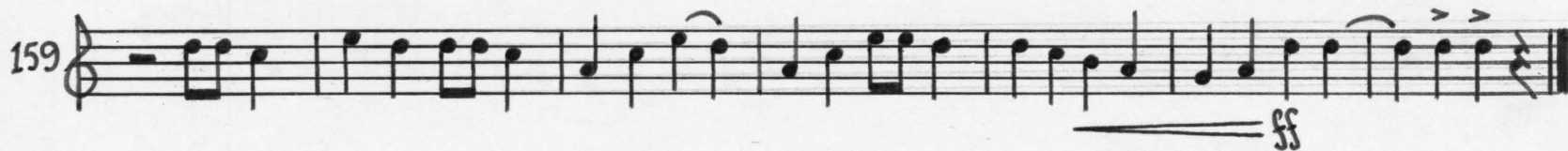
M N

*f* *mf*

144 M N

Handwritten musical notation for measures 144-147. Measure 144: Treble clef, quarter notes G4, A4, B4, C5. Measure 145: Quarter rest, quarter notes D5, C5, B4, A4. Measure 146: Quarter notes G4, F4, E4, D4. Measure 147: Quarter notes C4, B3, A3, G3. Dynamics: mp (mezzo-piano) at the start of measure 147. A fermata is placed over the first two notes of measure 147.

152 



## II

Gentilmente  $\text{♩} = 54$  (in 1)

4

mf

12

p

mf

23

p

mp

legato

3

33

41

mf

mp

p

mf

f

52

mf

p

mf

60

p

1

66

p

1

3

4.

Handwritten musical score, measures 75 to 136. The score is written on a single staff in treble clef, 2/4 time. It includes various musical notations such as notes, rests, slurs, and dynamic markings. Chord symbols D, E, F, and G are indicated above the staff. Measure numbers 75, 83, 91, 101, 109, 117, 125, and 136 are written at the beginning of their respective staves.

Measures 75-82: *mf* (measures 75-76), *f* (measures 81-82), *mf* (measures 83-84), *mp* (measures 85-86). Chord symbol **D** above measure 81.

Measures 83-90: *mf* (measures 83-84), *mp* (measures 85-86), *mf* (measures 87-88), *mp* (measures 89-90). Chord symbol **E** above measure 87.

Measures 91-98: *mf* (measures 91-92), *mp* (measures 93-94), *mf* (measures 95-96), *mp* (measures 97-98). Chord symbol **F** above measure 95.

Measures 99-106: *mp* (measures 99-100), *mf* (measures 101-102), *mp* (measures 103-104), *mf* (measures 105-106). Chord symbol **G** above measure 103.

Measures 107-114: *mp* (measures 107-108), *mf* (measures 109-110), *mp* (measures 111-112), *mf* (measures 113-114). Chord symbol **G** above measure 111.

Measures 115-122: *mp* (measures 115-116), *mf* (measures 117-118), *mp* (measures 119-120), *mf* (measures 121-122). Chord symbol **G** above measure 119.

Measures 123-130: *mp* (measures 123-124), *mf* (measures 125-126), *mp* (measures 127-128), *mf* (measures 129-130). Chord symbol **G** above measure 127.

Measures 131-136: *mp* (measures 131-132), *mf* (measures 133-134), *mp* (measures 135-136). Chord symbol **G** above measure 133.

## III

Feroce ♩ = 112

Handwritten musical score, measures 137 to 144. The score is written on a single staff in treble clef, 2/4 time. It includes various musical notations such as notes, rests, slurs, and dynamic markings. Measure numbers 137, 138, 139, 140, 141, 142, 143, and 144 are written at the beginning of their respective staves.

Measures 137-144: *f* (measures 137-138), *mf* (measures 139-140), *mp* (measures 141-142), *mf* (measures 143-144).

8

16

24

34

41

47

54

63

69

**A**

**B**

**C**

**D**

**E**

**F**

*f* *sfp* *f* *sfp* *f* *sfp* *f*

*mp* *sfp* *f* *sfp* *f* *sfp* *f*

*sfp* *f* *mf*

*p* *p*

*mute* *3* *mute* *f*

*mf* *mp* *p* *open* *5*

6. open

6. open

77 *mf*

86 *mf* *f*

93 *sfp* *f* *sfp* *f* *sfp* *f* *mf*

100 *f*

107 *f*

114 *sfp* *f* *sfp* *f* *sfp* *f* *ff*

Adagio affettuoso  $\text{♩} = 48$

IV

Handwritten musical score for "The Rose Tree" in 6/8 time. The score is written on three staves. The first staff contains measures 1-6, the second staff contains measures 7-12, and the third staff contains measures 13-18. The music features a melody with various dynamics (p, mp, mf) and articulations (accents, slurs). There are also some handwritten annotations like "1" above certain notes and boxed letters "A" and "B".

20 C

26 D

32 E

39 F

47

54

*p* *mp* *mf* *mp* *p* *mp* *mf* *p* *mp* *p* *pp*

Allegro festivo  $\text{♩} = 96$  (in 1)

V

14

26

*mf* *mf* *mf* *p* *mf* *f* *mf*

TIME

8.

Handwritten musical score for a single melodic line, measures 40 to 128. The score includes various musical notations such as notes, rests, slurs, and dynamic markings. It also features section markers labeled C, D, E, F, and G.

Measures 40-54: Section C. Dynamics: *mf*, *p*. Measure 40 has a fermata over a quarter rest.

Measures 55-64: Dynamics: *mp*, *sf*, *sf*. Measure 55 has a fermata over a quarter rest.

Measures 65-77: Dynamics: *sf*, *sfz*. Measure 65 has a fermata over a quarter rest. Measure 77 has a fermata over a quarter rest.

Measures 78-86: Dynamics: *f*. Measure 86 has a fermata over a quarter rest.

Measures 87-98: Section D. Dynamics: *mf*, *f*. Measure 87 has a fermata over a quarter rest.

Measures 99-111: Section E. Dynamics: *mf*, *mf*, *mp*. Measure 99 has a fermata over a quarter rest. Measure 111 has a fermata over a quarter rest.

Measures 112-119: Section F. Dynamics: *mf*, *f*. Measure 112 has a fermata over a quarter rest. Measure 119 has a fermata over a quarter rest.

Measures 120-127: Section G. Dynamics: *f*. Measure 120 has a fermata over a quarter rest. Measure 127 has a fermata over a quarter rest.

Measure 128: Final measure, dynamics: *f*. Measure 128 has a fermata over a quarter rest.

Tempo marking:  $\text{♩} = 144$

Handwritten musical score for a single melodic line, measures 136 to 192. The score includes various musical notations such as notes, rests, accidentals, and dynamic markings.

**Measure 136:** Starts with a treble clef and a key signature of one sharp (F#). The tempo is marked  $\text{♩} = 96$ . The measure contains a triplet of eighth notes, followed by a series of eighth and sixteenth notes. Dynamic marking: *mf*. A first ending bracket labeled "1" spans measures 136-137.

**Measure 146:** Contains eighth and sixteenth notes. Dynamic marking: *mf*. A first ending bracket labeled "H" spans measures 146-147.

**Measure 154:** Contains eighth and sixteenth notes. A first ending bracket labeled "1" spans measures 154-155.

**Measure 163:** Contains eighth and sixteenth notes. Dynamic marking: *mp*. A first ending bracket labeled "1" spans measures 163-164.

**Measure 173:** Contains eighth and sixteenth notes. Dynamic marking: *mp*. A first ending bracket labeled "2" spans measures 173-174.

**Measure 183:** Contains eighth and sixteenth notes. A first ending bracket labeled "J" spans measures 183-184.

**Measure 192:** Contains eighth and sixteenth notes. Dynamic marking: *cresc.* and *ff*. The phrase "accel. al fine" is written above the staff.

