

# **Trombone Quartet**

Trombone 2

**Walter Ross**  
**1972**

# TROMBONE QUARTET

## I

### Intrada

WALTER ROSS

Allegro  $\text{♩} = 120$

**Measure 1:**  $f$  (bass clef, 2/4 time). Notes: B $\flat$  (quarter), rest (quarter).

**Measure 5:** Boxed number 5. Notes: B $\flat$  (quarter), rest (quarter).

**Measure 10:** Boxed number 10. Notes: B $\flat$  (quarter), rest (quarter).

**Measure 15:** Boxed number 15. Notes: B $\flat$  (quarter), rest (quarter).

**Measure 20:** Boxed number 20. Notes: B $\flat$  (quarter), rest (quarter).

**Measure 25:** Boxed number 25. Notes: B $\flat$  (quarter), rest (quarter).

**Measure 30:** Boxed number 30. Notes: B $\flat$  (quarter), rest (quarter).

**Measure 35:** Boxed number 35. Notes: B $\flat$  (quarter), rest (quarter).

**Measure 40:** Boxed number 40. Notes: B $\flat$  (quarter), rest (quarter).

**Measure 45:** Boxed number 45. Notes: B $\flat$  (quarter), rest (quarter).

**Measure 50:** Boxed number 50. Notes: B $\flat$  (quarter), rest (quarter).

**Measure 55:** Boxed number 55. Notes: B $\flat$  (quarter), rest (quarter).

**Measure 60:** Boxed number 60. Notes: B $\flat$  (quarter), rest (quarter).

**Dynamics and Articulations:**  $f$ ,  $pp$ ,  $f$ ,  $p$ ,  $mp$ ,  $mf$ ,  $p$ ,  $pp$ ,  $p$ ,  $pp$ ,  $p$ ,  $mf$ ,  $f$ ,  $p$ ,  $f$ ,  $f$ ,  $f$ .

**Articulations:**  $>$ ,  $<$ ,  $\text{legato}$ ,  $\text{pp}$ ,  $p$ ,  $f$ .

**Repeat Signs:** First ending (measures 25-30), Second ending (measures 30-35).

## Trombone 2

3

65 Slower  $\text{♩} = 90$

70 *legato*

80 *p* *pp* *f*

75 *p* *mf* *f* *ff*

80 Subito allegro  $\text{♩} = 120$

85 *p*

90 *mf* *p*

95 *mf* *p* *f* *p* *f*

100 *p* *f* *p* *f* *p* *f*

105 *f* *p* *f*

110 *f* *mf* *f* *ff*

115 *p*

120

125 *mf* *f* *f*

130

# II "Chorale"

Adagio  $\text{♩} = 60$



*pp sempre*

5



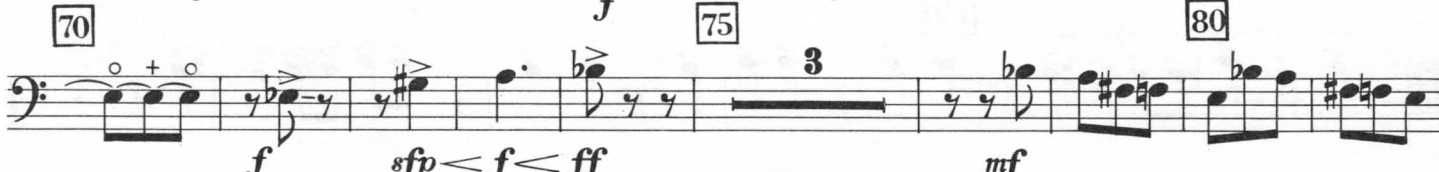
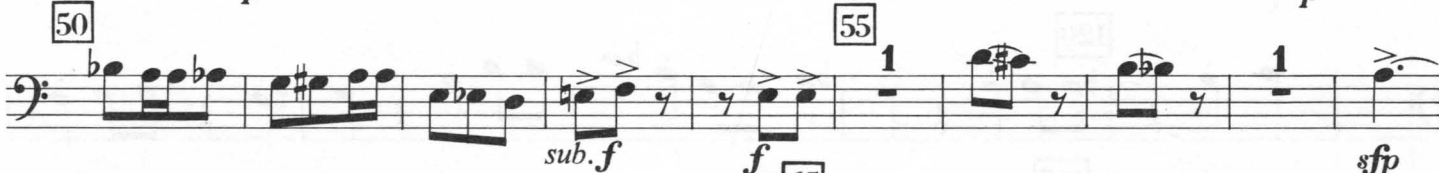
10



# III Scherzo

Allegro  $\text{♩} = 108$

HARMON MUTE



## Trombone 2

5

85 90 100 95 105 Faster REMOVE MUTE  $\text{♩} = 120$  110 115 120 125 130 135 140 145 150 lightly  $p$  155 160 Faster  $\text{♩} = 120$  165 170 175 Slower  $\text{♩} = 96$  180 Faster  $\text{♩} = 120$  185 190 move 195 200 205 210

*mf* *f* *ff* *p* *pp* *mf* *p* *mf* *f* *pp* *mf* *f* *ff*

slide without sounding

Tempo 1  $\text{♩} = 108$