

# TUBA DUOS

Walter Ross

**Tuba 2**

Allegro leggiero  $\text{♩} = 108$

I  
TOCCATA

TUBA II

2

*mp*

10

3

*mf*

(A)

20

5

30

*f*

(B)

*mf* *f* *mf*

40

*f*

(C)

*mp*

50

*cresc.* *f*

(D)

5

*mf*

60

70

2

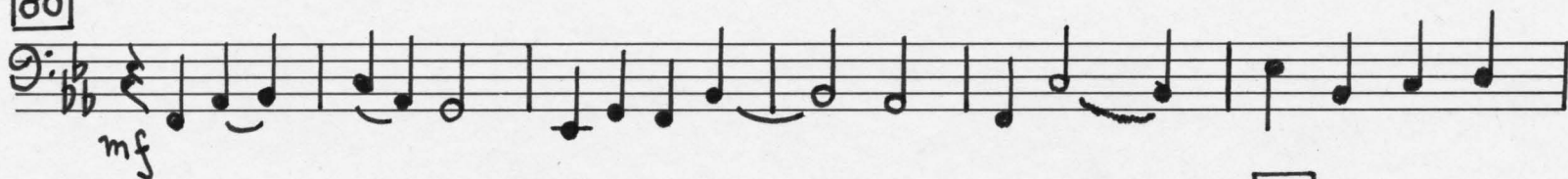
E



F

*f*

80

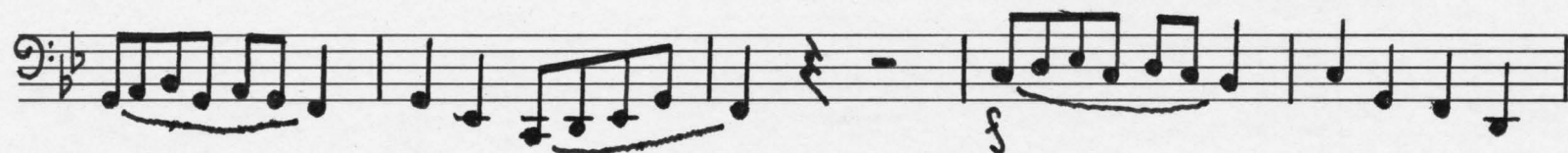


90

G



100



H

*poco molto mosso*

110

*♩ = 120*

2





Andante cantabile ♩=72

## II CAVATINA

mp

mf

mp

p

3

1<sup>st</sup>

10

1

mf

20

3

3

listesso tempo  
leggero

p

p

1

30

3

mf

40

1

3

listesso tempo

mp

p

2

50

2

mp

1

p

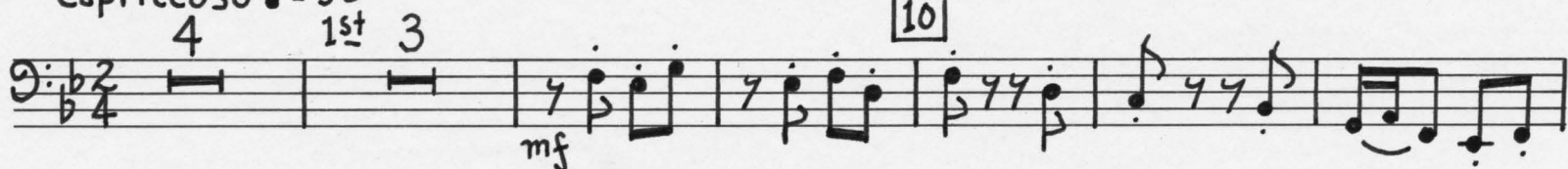
mp

p

Capriccioso ♩ = 90

III  
BADINAGE

10



A

20



B

1



30

C

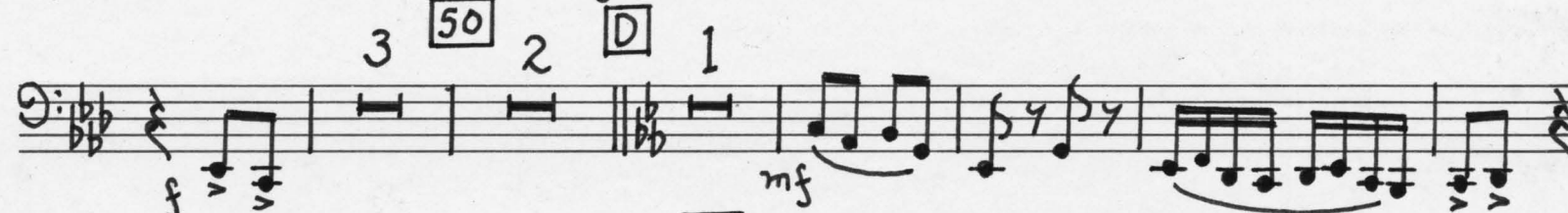


40



50

D

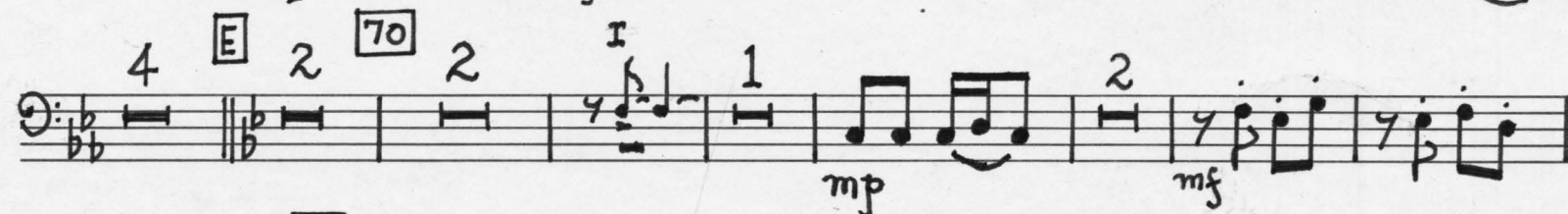


60



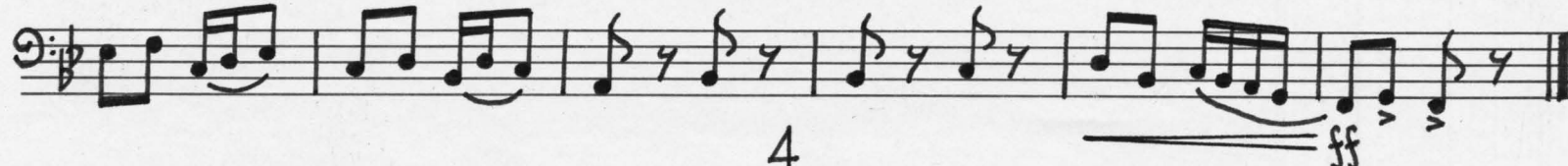
70

E



80

F





Adagietto con grazia  $\text{♩} = 48$

# IV BERCEUSE

Measures 1-30 of the Berceuse. The score is in bass clef with a 3/8 time signature. It includes dynamic markings *mp*, *mf*, *p*, and *pp*, and a *rit.* (ritardando) marking. Measure numbers 10, 20, and 30 are boxed. There are also measure groupings of 4, 2, and 2.

# V TARANTELLA

Allegro fantastico  $\text{♩} = 90$

Measures 1-30 of the Tarantella. The score is in bass clef with a 6/8 time signature. It includes dynamic markings *mf* and *pp*. Measure numbers 10, 20, and 30 are boxed. There are also measure groupings of 5, 3, 2, 1, and 4.

40



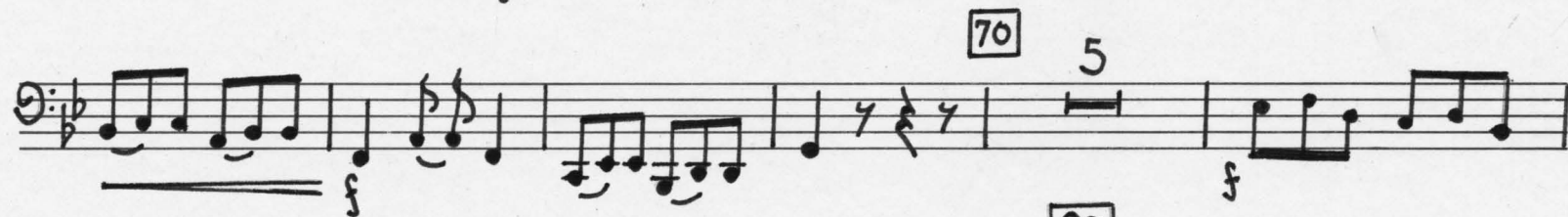
50



60



70



80



90

