

# FLUTE QUARTET N°3

**Viola**

WALTER ROSS

10

20

30

40 pizz. 2 3

50 2 p

60

70 2

2.

mp cresc. mf f

80 legato mf p

90 mf f ff

100 2 pizz. mf f mf 2 3 4 5

110 arco 2 f mf

120 1 f mp cresc. f

ff sub.mf

130 1 pp

sul tasto 2 pp 2

140 modo ord. mf p mf



150

1

150-155

*p* *mf* *f*

Musical staff 150-155 in G major, bass clef. It begins with a first ending bracket over measures 150-154. Dynamics are *p* (150), *mf* (151-152), and *f* (153-154). The staff ends with a double bar line and a repeat sign.

155-160

*cresc.* *poco rit.* *ff*

Musical staff 155-160 in G major, bass clef. It continues from the previous staff. Dynamics include *cresc.*, *poco rit.*, and *ff*.

160

160-165

*f* *p* *mp*

Musical staff 160-165 in G major, bass clef. It begins with a first ending bracket over measures 160-164. Dynamics are *f* (160), *p* (161-162), and *mp* (163-164).

165-170

*mf*

Musical staff 165-170 in G major, bass clef. It continues with a *mf* dynamic.

170

170-175

*mp* *mf* *mp*

Musical staff 170-175 in G major, bass clef. It begins with a first ending bracket over measures 170-174. Dynamics are *mp* (170), *mf* (171-172), and *mp* (173-174).

180

175-180

*p* *f* *sub.p*

Musical staff 175-180 in G major, bass clef. It begins with a first ending bracket over measures 175-179. Dynamics are *p* (175), *f* (176-177), and *sub.p* (178-179).

190

180-185

*mf* *pp* *mf*

Musical staff 180-185 in G major, bass clef. It begins with a first ending bracket over measures 180-184. Dynamics are *mf* (180), *pp* (181-182), and *mf* (183-184).

200

185-190

*f*

Musical staff 185-190 in G major, bass clef. It begins with a first ending bracket over measures 185-189. Dynamics include *f*.

210

190-195

*f*

Musical staff 190-195 in G major, bass clef. It begins with a first ending bracket over measures 190-194. Dynamics include *f*.

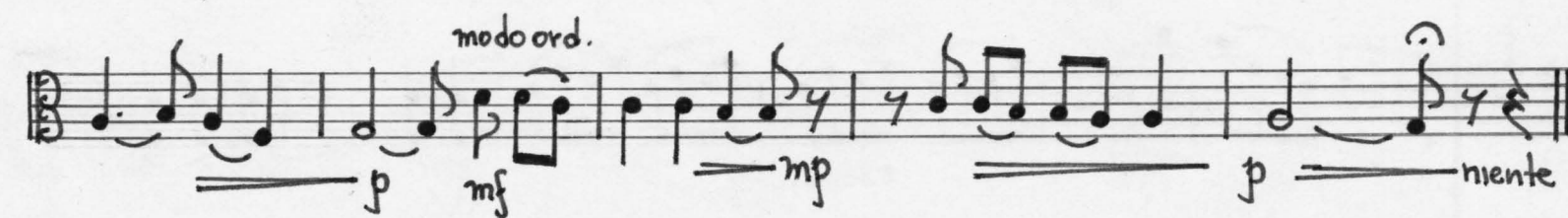
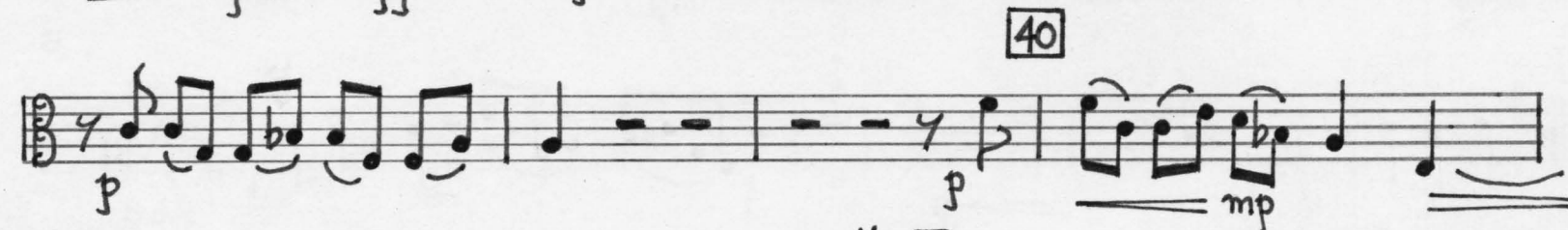
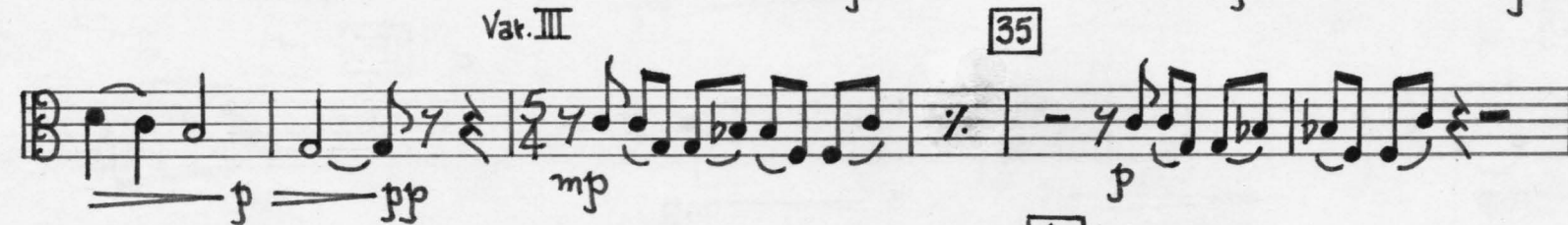
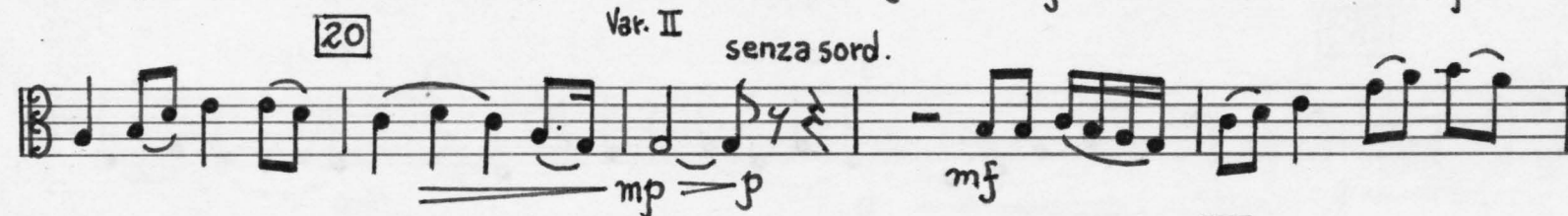
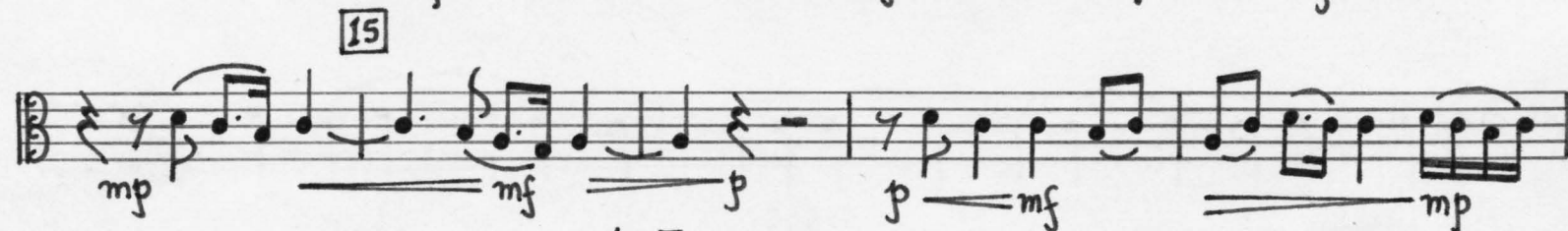
195-200

*f* *cresc.* *ff*

Musical staff 195-200 in G major, bass clef. It begins with a first ending bracket over measures 195-199. Dynamics are *f* (195), *cresc.* (196-197), and *ff* (198-199).

4. Andante con grazia ♩ = 60  
mute 4 5 10 Var. I mute

## II





off

p

10

cresc.

mf

20

Vn.

1 2 2

mf

f

30

40

2 10

mf

50

f

1 off

60

p

p

70

80

mf

cresc.

f

90

mp

p

100

pp

mp

V.S.P.D.Q.

6.

110

120

5 4 1

p

1 1

p p p mf

140

p cresc. f

150

1 2

mf p

pizz.

160

mf

$\text{♩} = 132$  più mosso

170

9 1

1 arco off

2 3 4

mp

180

cresc.

mf f

190

3

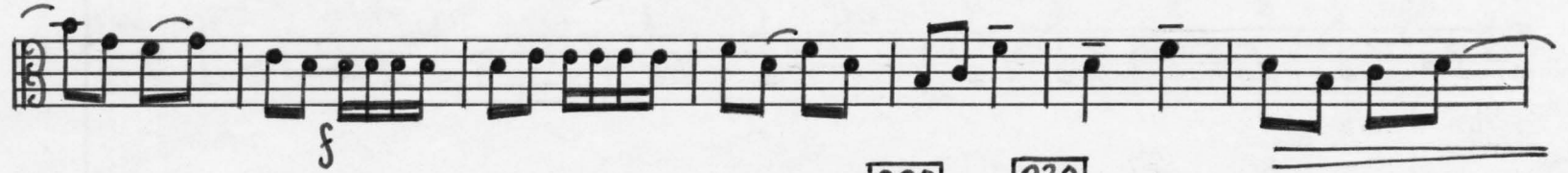
mf

200

6 2

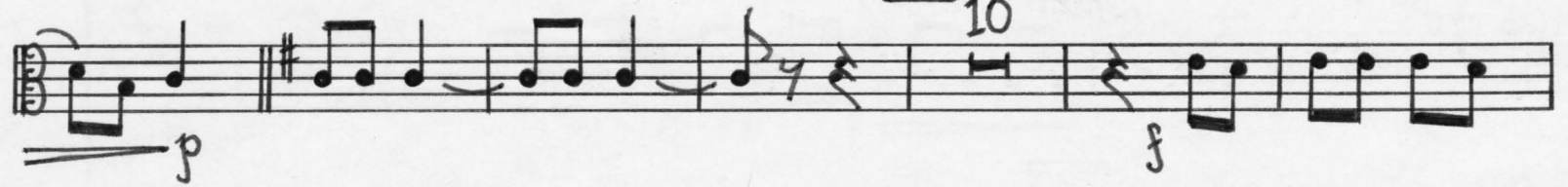
mf

210

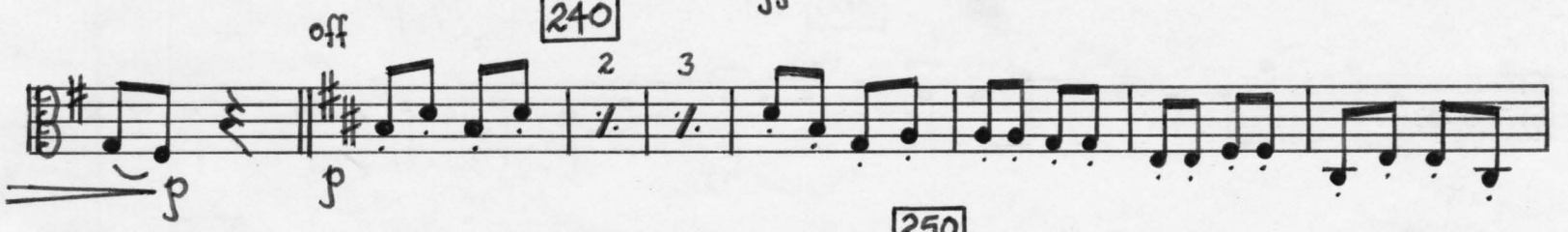


220

230



240



250



260



v.s.



8. 270 pizz.

