

FLUTE QUARTET N°3

Violoncello

WALTER ROSS

I

Allegro energico $\text{♩} = 108$

10 20 30 40 50 60 70 80

f *mp* *f* *mp* *f* *p* *mf* *f*

pizz. *arco*

2 3 4 2 3 4 2 3 4 2 3 4 2 3 4

2 3 1 2 9 4

2.

legato

p

mf

f

[90]

ff

pizz.

mf

f

[100]

2 3 4 5

mf

f

[110]

arco

mf

[120]

f

mp cresc.

f

1

ff

mf

[130]

pp

sul tasto

pp

pp

2

[140]

pizz.

mf

p

3

[150]

arco

f

[160]

cresc.

ff

f

Detailed description: This musical score is for a piece in G major (one sharp). It consists of ten staves of music. The first staff begins with a 'legato' instruction and a piano (p) dynamic, followed by a crescendo to mezzo-forte (mf) and then forte (f). The second staff starts with a fortissimo (ff) dynamic, includes a 'pizz.' (pizzicato) instruction, and features a sequence of sixteenth notes with fingerings 2, 3, 4, 5, 6. The third staff continues with mf and f dynamics, includes a 'arco' instruction, and has fingerings 2, 3, 4, 5. The fourth staff features a crescendo from mezzo-piano (mp) to forte (f). The fifth staff includes a fortissimo (ff) dynamic and a first ending bracket. The sixth staff is a single line of music. The seventh staff begins with a fortissimo (ff) dynamic and a 'sul tasto' instruction, followed by piano (pp) dynamics and fingerings 1 and 2. The eighth staff includes a fortissimo (ff) dynamic, a 'pizz.' instruction, and fingerings 2 and 1. The ninth staff features a mezzo-forte (mf) dynamic, a first ending bracket, and an 'arco' instruction. The tenth staff includes a mezzo-forte (mf) dynamic, a fortissimo (ff) dynamic, and a first ending bracket. The score concludes with a 'cresc.' instruction and a fortissimo (ff) dynamic.

poco rit. *al tempo* 2

Handwritten musical score for a single melodic line in G major, 9/4 time. The score consists of eight staves. It begins with a *poco rit.* marking and a *2* over a half note, followed by *al tempo*. The music features various dynamics including *p*, *pp*, *mp*, *mf*, *f*, and *sub.p*, along with articulation like accents and slurs. Measure numbers 170, 180, 190, 200, and 210 are boxed. The piece concludes with a double bar line.

II

Andante con grazia ♩ = 60
mute

Handwritten musical notation for a 4-measure rest, marked with a *4* and a boxed *5*.

Var. I

Handwritten musical notation for a 10-measure melodic line in G major, 9/4 time. It starts with a *mute* marking and a boxed *10*. The music features dynamics *mp*, *mf*, and *p*, with slurs and accents. It ends with a double bar line.

15

mp — mf — p — p — mf — mp

20

senza sord. 1 pizz.

mp — p

25

30

Var. III

35 arco

2

mf — p — mp — mf³ — pp

40

1

mf — f — mp — p — p — mf

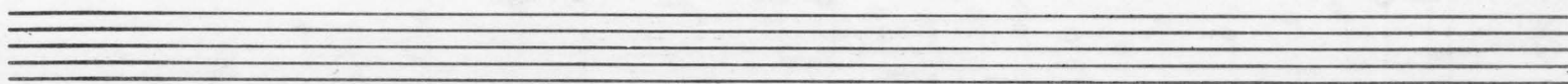
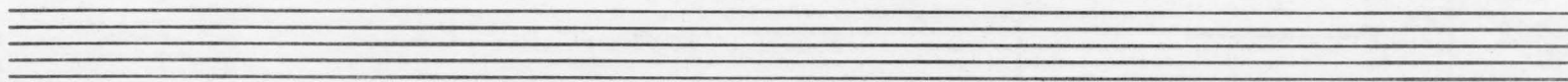
Var. IV

3

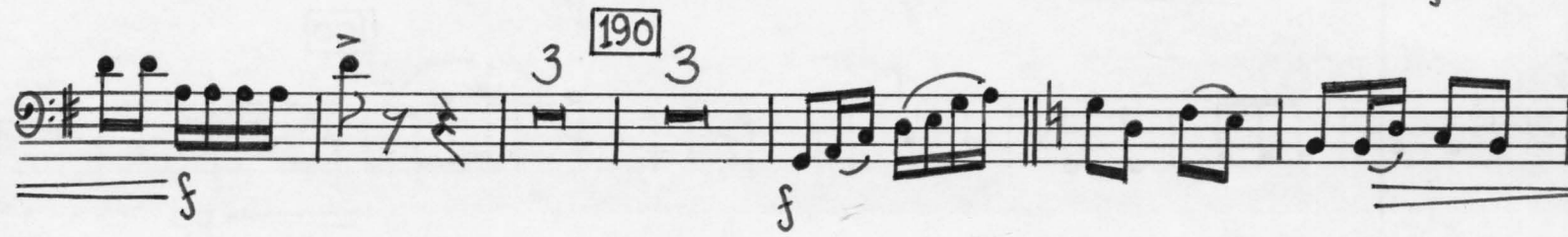
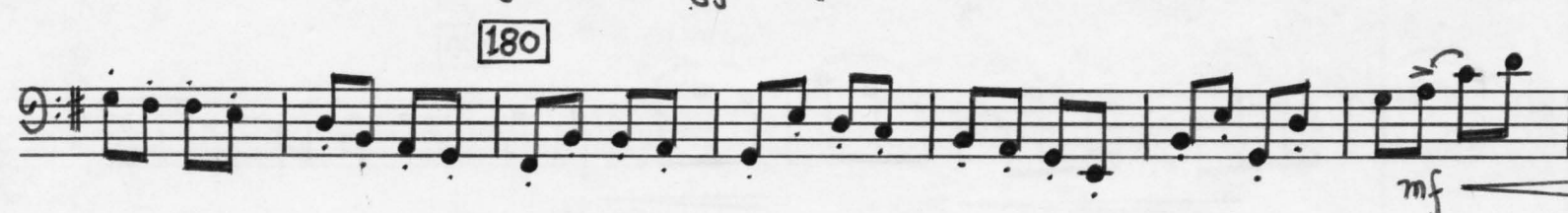
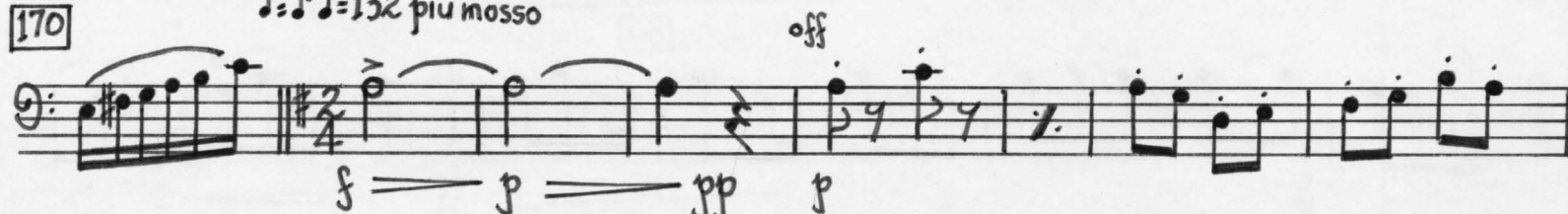
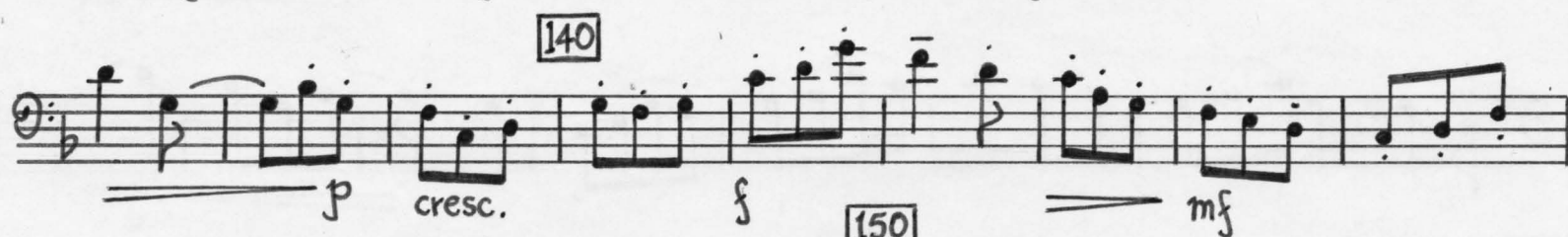
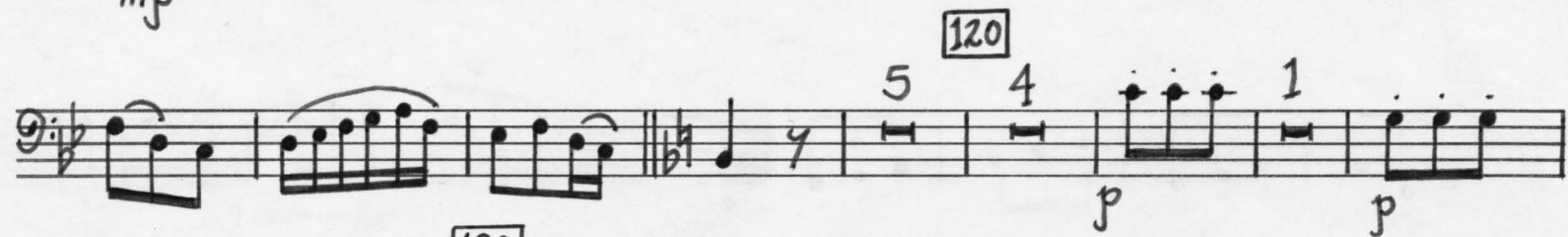
p — mf — mp — p

50 5 55 2

mf — mp — p — niente



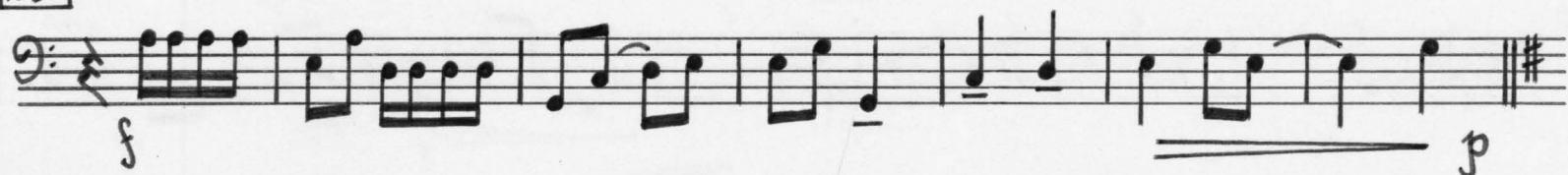
off
 p
 10
 cresc.
 mf — f
 20
 f
 30
 mf
 40
 5 pizz.
 mf
 50 arco
 f
 60
 1 off
 p
 70
 mf
 cresc.
 80
 f
 ff
 90
 mp
 p
 100
 pp
 2
 V.S.



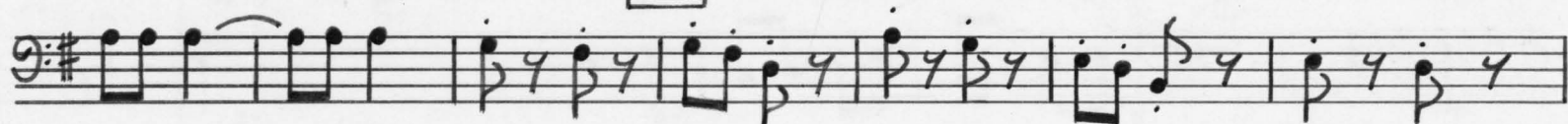
200



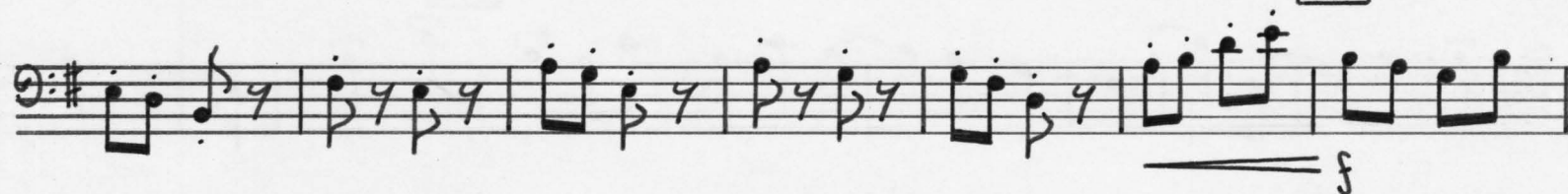
210



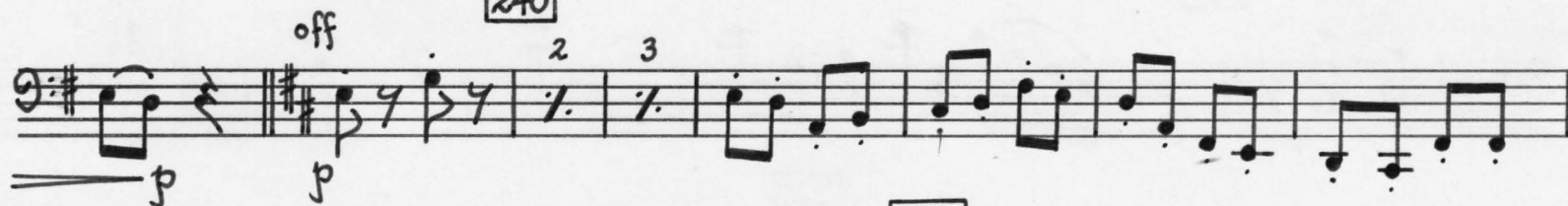
220



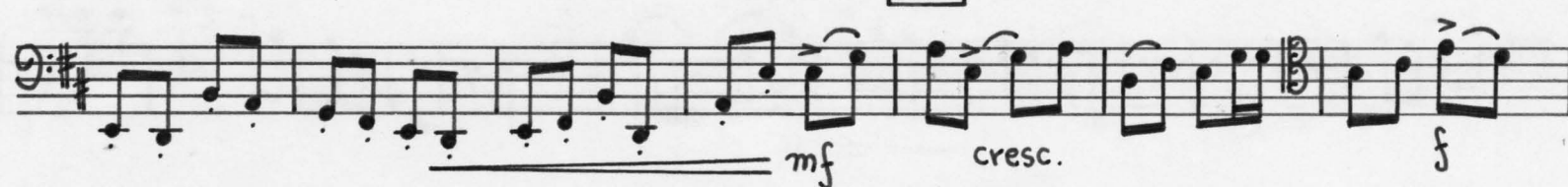
230



240



250



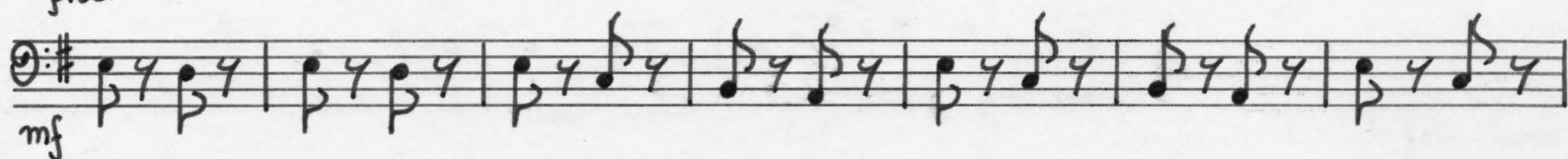
260



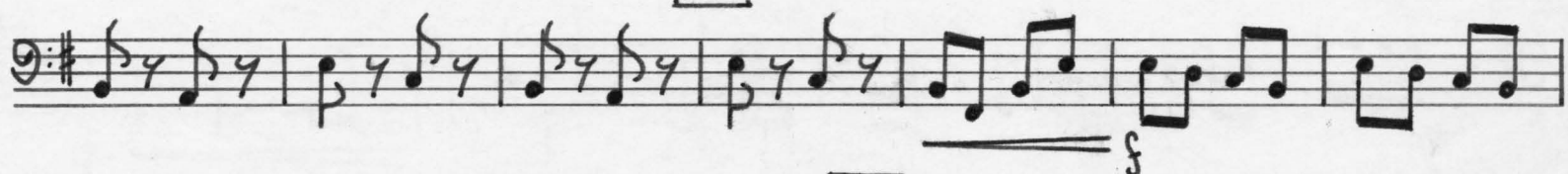
V.S.

8. [270]

pizz.



[280]



[290]



[300]



[310]



[320]

