

# FLUTE COMPOSITE

Walter Ross  
2009

Flute 2

# FANTASIA

Flute II

Allegro animato  $\text{♩} = 108$

8  $\text{mf}$

15  $\text{f}$  27

30

37 *subito meno mosso*  $\text{♩} = 90$   
 $\text{sffz}$   $\text{p}$   $\text{mp}$

51  $\text{p}$   $\text{mf}$

65

72 *Tempo 1°*  
 $\text{p}$

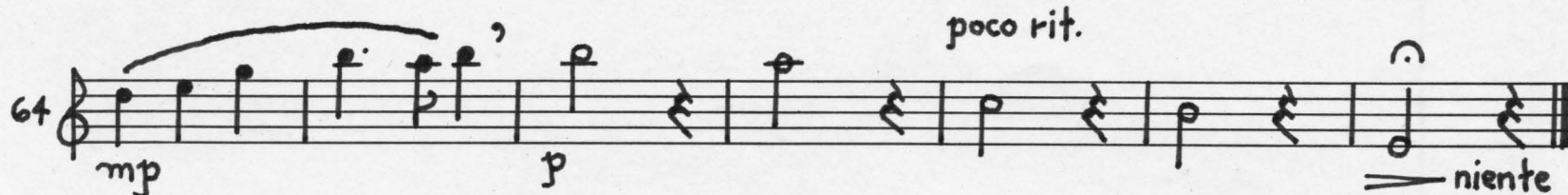
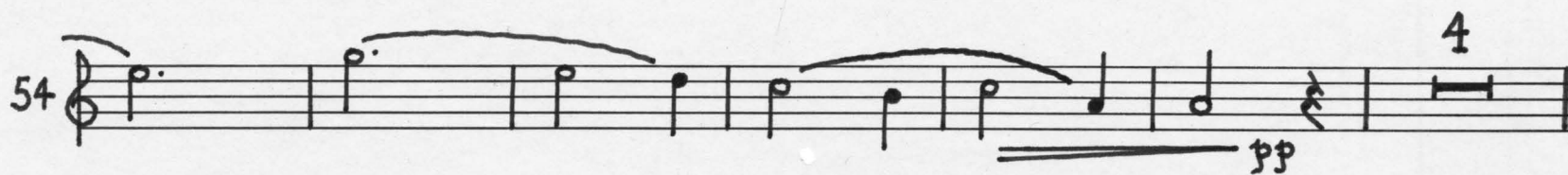
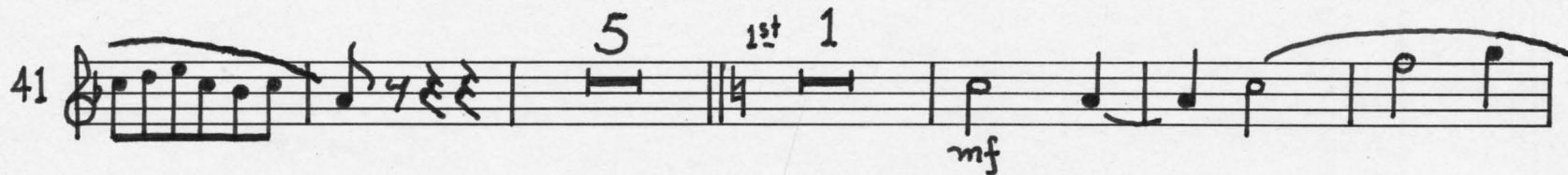
83  $\text{mf}$   $\text{f}$

90  $\text{ff}$  III 1



## ELEGIE

Andante con grazia ♩ = 90





Allegro burlesco  $\text{♩} = 108$

# BURLETTA

Flute II

5

$f$

$ff$

13

$f$

25

4

2

1

1

$p$

$p$

$p$

$pp$

$p$

poco rit. ...

38

$pp$

G.P.

a tempo

$f$

$ff$

45

1

$mf$

52

$mf$

$mf$

$ff$

2

$p$

60

3

5

1

1

$f$

$f$

72

1

$f$

78

1

$f$

$ff$

# TARANTELLA

Allegro fantastico J. = 90

The musical score for "TARANTELLA" is written in treble clef with a key signature of one sharp (F#) and a 6/8 time signature. The tempo is marked "Allegro fantastico" with a metronome marking of quarter note = 90. The score consists of several staves, each containing musical notation with various dynamics and articulations.

**Staff 1 (Measures 1-10):** Starts with a piano (*p*) dynamic. It features a series of eighth and sixteenth notes, with some measures containing rests. Dynamics include *p* and *mf*. There are fingerings 1, 2, and 3 indicated above some notes.

**Staff 2 (Measures 11-18):** Starts with a mezzo-forte (*mf*) dynamic. It continues with eighth and sixteenth notes. Dynamics include *mf*.

**Staff 3 (Measures 19-25):** Starts with a mezzo-forte (*mf*) dynamic. It features a series of eighth and sixteenth notes, with some measures containing rests. Dynamics include *mf* and *f* (forte). A "cresc." (crescendo) marking is present towards the end of the staff.

**Staff 4 (Measures 26-34):** Starts with a fortissimo (*ff*) dynamic. It features a series of eighth and sixteenth notes, with some measures containing rests. Dynamics include *ff*, *f*, *mp* (mezzo-piano), *mf*, and *mp*. There are fingerings 1 and 2 indicated above some notes. A "short a tempo" marking is present above a measure.

**Staff 5 (Measures 35-42):** Starts with a mezzo-forte (*mf*) dynamic. It features a series of eighth and sixteenth notes, with some measures containing rests. Dynamics include *mf* and *f*.

**Staff 6 (Measures 43-54):** Starts with a fortissimo (*f*) dynamic. It features a series of eighth and sixteenth notes, with some measures containing rests. Dynamics include *f*.

**Staff 7 (Measures 55-64):** Starts with a fortissimo (*ff*) dynamic. It features a series of eighth and sixteenth notes, with some measures containing rests. Dynamics include *ff*, *p* (piano), *mp*, and *mf*. There are fingerings 1 and 2 indicated above some notes.

**Staff 8 (Measures 65-77):** Starts with a fortissimo (*f*) dynamic. It features a series of eighth and sixteenth notes, with some measures containing rests. Dynamics include *f*.

**Staff 9 (Measures 78-84):** Starts with a fortissimo (*ff*) dynamic. It features a series of eighth and sixteenth notes, with some measures containing rests. Dynamics include *ff*.