

SCHERZO EROICO

Walter Ross
2006

Bass 3

Bass III

Musical score for "The Swan" by Camille Saint-Saëns, Op. 20, No. 4. The score is in bass clef, 3/8 time, and B-flat major. It consists of 116 measures. The score includes various musical notations such as notes, rests, slurs, and dynamic markings (f, mf, p, pizz., arco). There are also section markers labeled A, B, C, D, E, F, and G. The score is presented in a single system with multiple staves.

2.

129 *mf* *f* *ff*

[H] *leggero* 1 *p* 1 *p* 2 *p*

149 *mf* *mp* *p* 1 2 3

[J] *Tempo 1^o*

168 *f*

177 [K] 1 *f*

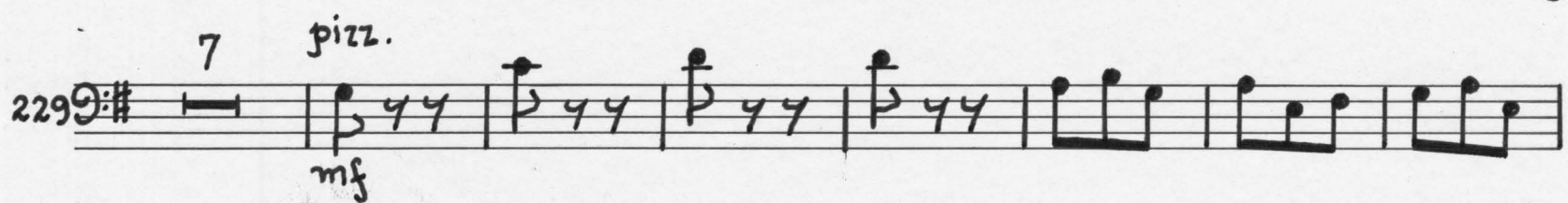
187 2 *mp*

196 *mf* *f* [L] *mp*

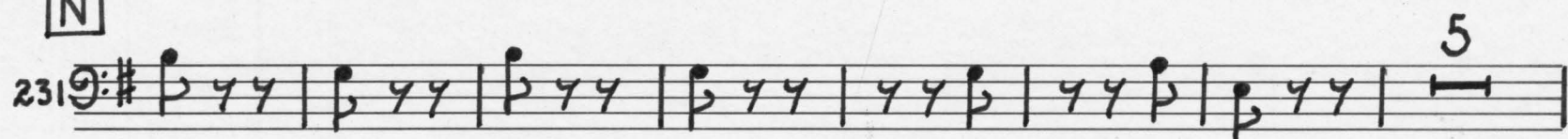
204 2 *f*

213

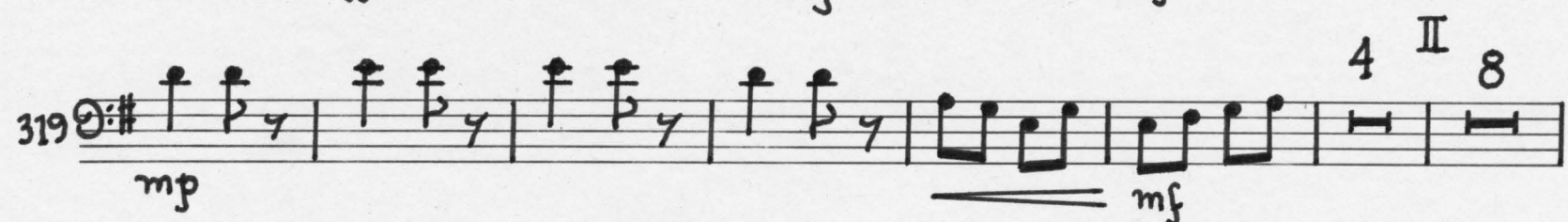
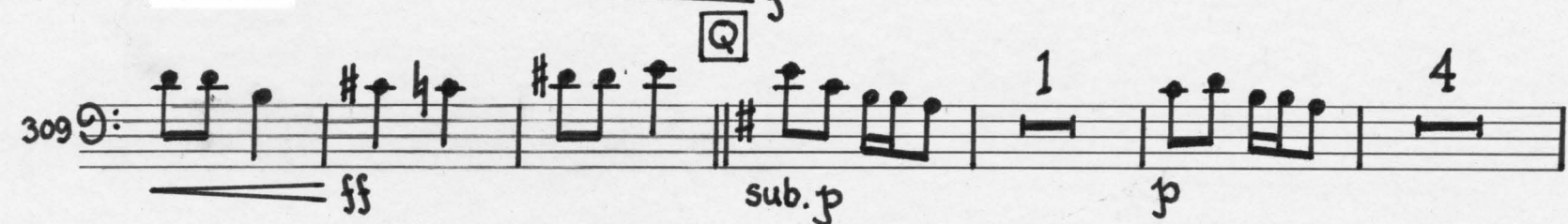
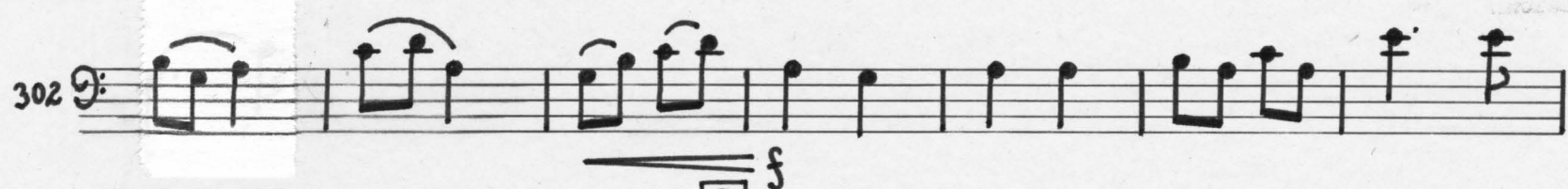
[M] 221 *mf*



[N]

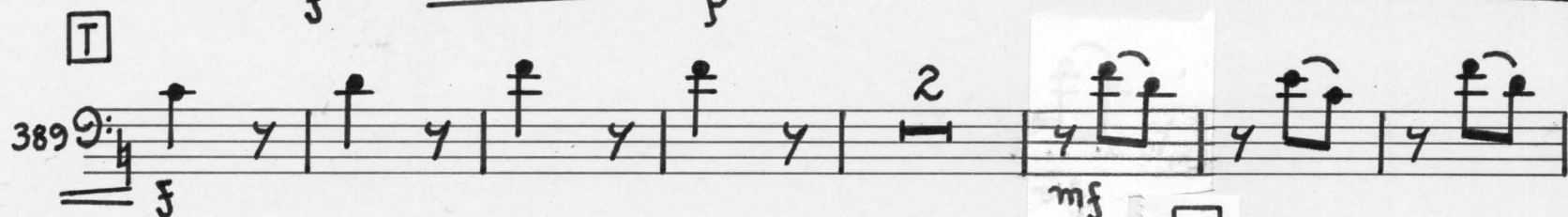
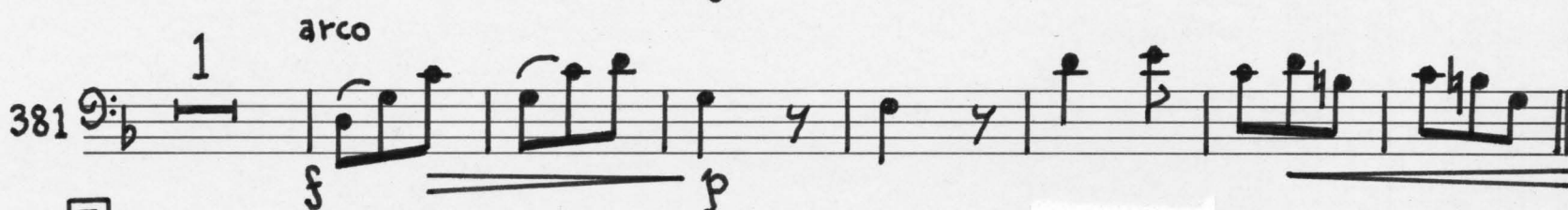
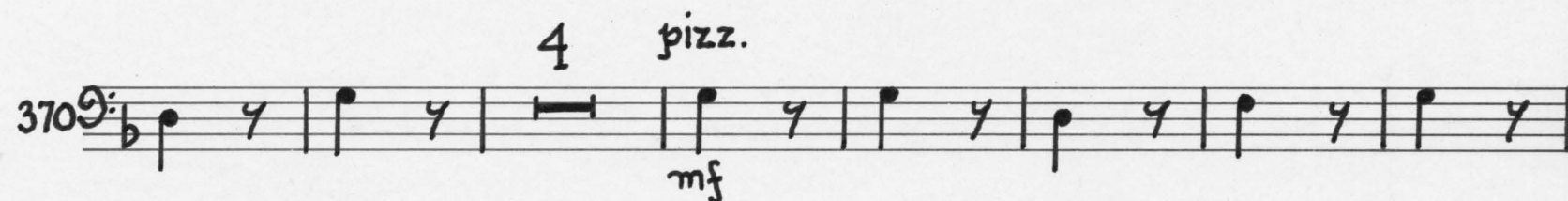
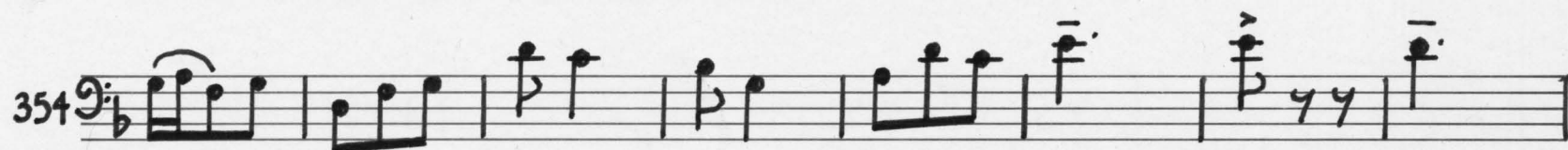
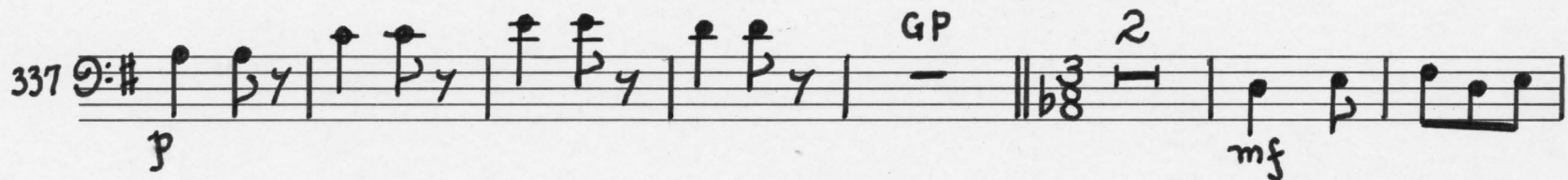


[O] Tempo II



4.

[R] Tempo 1°

accel. poco
poco al fine