

SUITE N^o 1
FOR 13 WIND INSTRUMENTS

WALTER ROSS

B \flat Clarinet 2

2nd B^b ClarinetSUITE N^o 1

Walter Ross

Andantino funerale $\text{♩} = 108$

PRELUDE

Handwritten musical score for 2nd B^b Clarinet, Suite No. 1, Prelude, by Walter Ross. The score is in 3/4 time, Andantino funerale tempo (♩ = 108). It consists of 90 measures, ending with a repeat sign. The score is divided into sections A, B, C, D, E, F, and G. Dynamics include pp, mf, f, ff, p, and ppp. Fingerings and breath marks are indicated throughout.

Measures 1-10: Section A, pp, mf, f, pp, mf.

Measures 11-20: Section B, pp, mf, f, pp, mf, f, pp, mf.

Measures 21-30: Section C, pp, p, pp, p.

Measures 31-40: Section D, mf, f, ff, p.

Measures 41-50: Section E, mf, f, ff, p.

Measures 51-60: Section F, pp, mf, f, pp, p.

Measures 61-70: Section G, pp, p, pp, p.

Measures 71-80: Section H, pp, p, pp, p.

Measures 81-90: Section I, pp, p, pp, p.

95

100

3

sf *pp* *f*

2

105

2

f *ff*

110

f

115

1

f *ff*

maestoso

1

120

1

ff

125

ff *f* *mf* *mf* *p*

1

pp

Allegro con fuoco d=120

II
FANTASIA

mf

2 3

10

1

f *mp*

3. 2nd Bb Clarinet

Handwritten musical score for 2nd Bb Clarinet, featuring measures 30 through 100. The score includes various musical notations, dynamics, and performance instructions.

Measures 30-40: Measure 30 is marked with a circled 'A' and a '3' above the staff. The music begins with a triplet of eighth notes. Dynamics include *mp* (mezzo-piano) and *f* (forte). Measure 40 is marked with a circled 'B' and a '1' above the staff.

Measures 40-50: Measure 40 is marked with a circled 'B' and a '1' above the staff. Measure 50 is marked with a circled 'C' and a '2' above the staff. Dynamics include *f* (forte) and *mf* (mezzo-forte).

Measures 50-60: Measure 50 is marked with a circled 'C' and a '2' above the staff. Measure 60 is marked with a circled 'D' and a '5' above the staff. Dynamics include *mf* (mezzo-forte) and *f* (forte).

Measures 60-70: Measure 60 is marked with a circled 'D' and a '5' above the staff. Measure 70 is marked with a circled 'E' and a '7' above the staff. Dynamics include *mf* (mezzo-forte) and *f* (forte).

Measures 70-80: Measure 70 is marked with a circled 'E' and a '7' above the staff. Measure 80 is marked with a circled 'F' and a '1' above the staff. Dynamics include *p* (piano), *mp* (mezzo-piano), *mf* (mezzo-forte), and *f* (forte).

Measures 80-90: Measure 80 is marked with a circled 'F' and a '1' above the staff. Measure 90 is marked with a circled 'G' and a '4' above the staff. Dynamics include *p* (piano), *mp* (mezzo-piano), *mf* (mezzo-forte), and *f* (forte). The instruction *poco rit. al* is written above the staff.

Measures 90-100: Measure 90 is marked with a circled 'G' and a '4' above the staff. Measure 100 is marked with a circled 'H' and a '4' above the staff. Dynamics include *p* (piano), *mp* (mezzo-piano), *mf* (mezzo-forte), and *f* (forte). The instruction *Andante con moto* is written above the staff, followed by *d=80* and *d=100*.

110 *mf* *f* *mf* *p*

2 (I) 7 120 3 (J) Horns 7 130 1 (K) Bassoons 3

pp

mf

140

(L) *f*

2 *ff*

1 150 3 *poco rit.* (M) *ff* Tempo 1^o d=120

p

160

4 *mf*

170

f

1 (N) 5 180 2

p

190

5. 2nd B^b Clarinet

(P)

200 **f** **mf** 3

210 **f** 1

220 **f** **mf** 6 8

230 **pp** **mf** **f** 1

240 **f** 8

250 **ff** **f** (T) *piu mosso* $\text{♩} = 132$

260 **ff** 1 (U)

260 **ff**

trm **ff** **fff**

Adagio cantabile ♩ = 60

Handwritten musical score for 2nd Bb Clarinet, titled "III NUNC DIMITTIS". The tempo is "Adagio cantabile" with a metronome marking of ♩ = 60. The score is written on a single staff in 4/4 time, featuring various musical notations including notes, rests, and dynamic markings.

Key markings and measures include:

- Measures 1-4: Initial notation with dynamic markings *p* and *mf*.
- Measures 10-15: Section marked with a circled "A" and measure numbers 10, 15, and 20.
- Measures 25-30: Section marked with a circled "B" and measure numbers 25, 30, 35, and 40.
- Measures 45-50: Section marked with a circled "C" and measure numbers 45, 50, and 55.
- Measures 55-60: Section marked with a circled "D" and measure numbers 55, 60, and 65.
- Measures 65-70: Section marked "in tempo" with measure numbers 65, 70, and 75.
- Measures 75-80: Section marked "rubato" with measure numbers 75, 80, and 85.

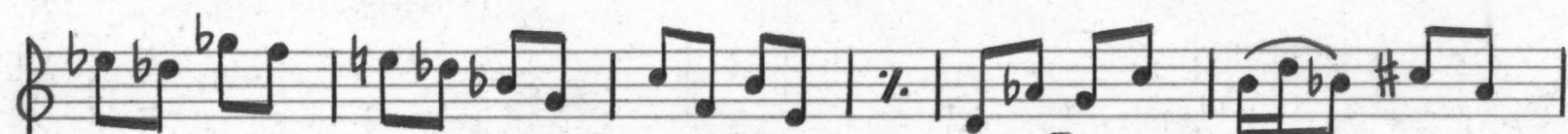
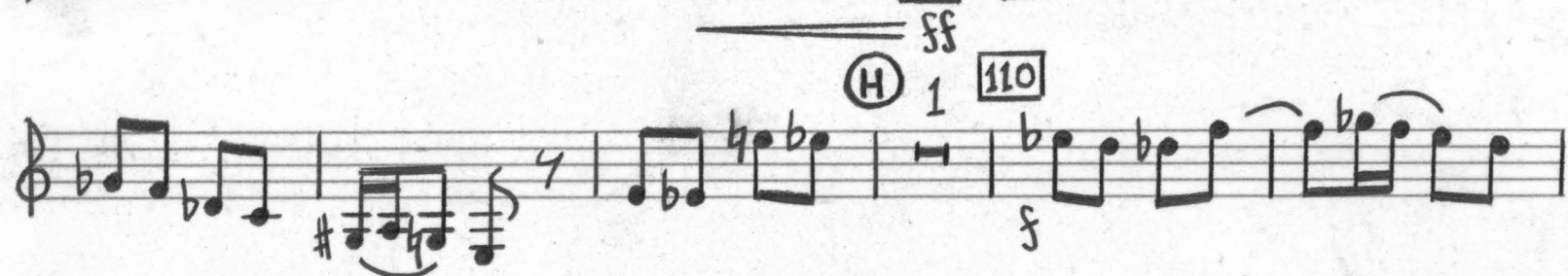
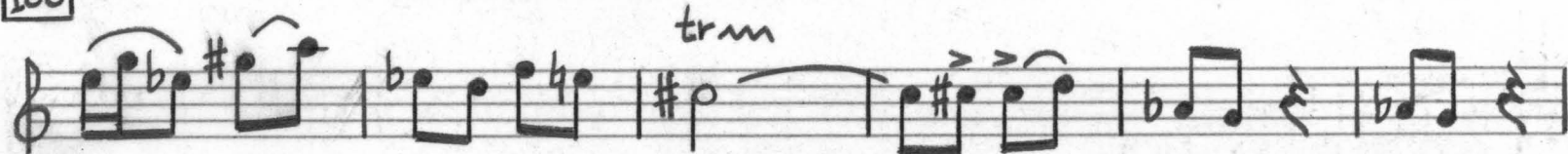
The score concludes with a final double bar line. The bottom of the page shows empty staves.

IV BARZELLETTA

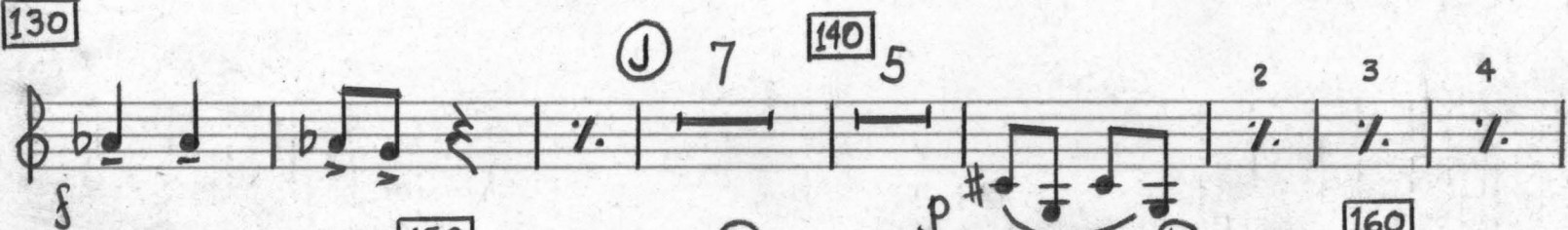
NO. D 2 - 10 STAVE

8. 2nd B^b Clarinet

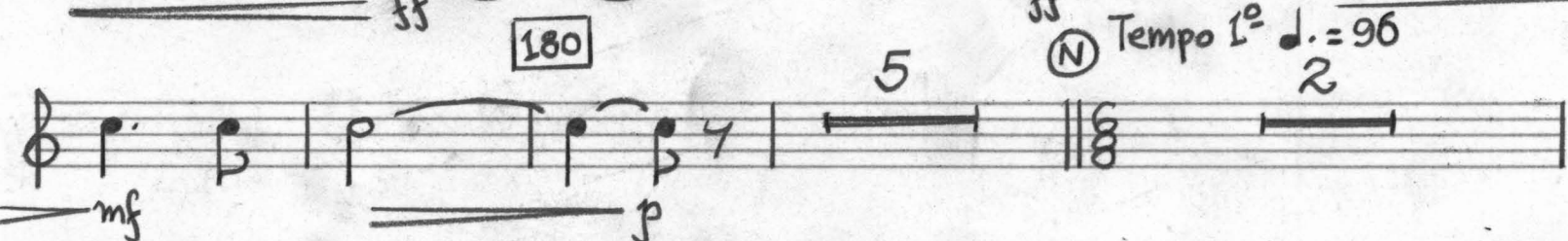
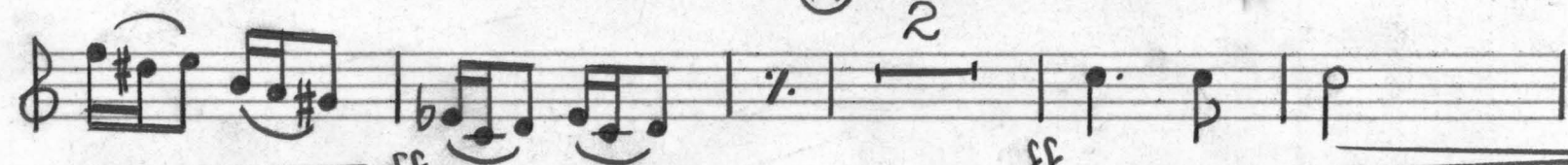
100



130



(M) subito meno mosso ♩ = 108



[illegible]