

**SUITE N<sup>o</sup> 1**  
**FOR 13 WIND INSTRUMENTS**

**WALTER ROSS**

**F Horn 4**

## 4th F Horn

## SUITE N° 1

Walter Ross

Andantino funebre  $\text{♩} = 108$  Prelude

*mute* 1st + 2nd 3 5 4 3rd 10 *mute*

*pp* mf

1 (A) 1 15 5 20 (B)

*sfz* mp *open*

25 5 30 5 35 5 40 5 45 5 50 3 (D)

55 *p* *f* *pp* *mute* 1

60 *ff* *mf* *p* *pp* *mp* *f* *p* 65

1 (mute) *mp* *pp* *open* 2 (F) 3

75 5 80 3 (G) 85 4 90 5 95 4

*pp* *mf* *f*

*Cls.* 100 5 105 2 3rd 2 110 5 115 2 1 *maestoso*

1 120 *mute* *open*

*ff* *ff* *f*

125 4

# II Fantasia

2.

Allegro con fuoco  $\text{♩} = 120$ 

5 2 3 10 1

5 20 1

2 (A) 2

30 6 40 (B) 9

50 6 (C) 2 60 5 (D) 5 70 3 (E) 7 oboes

80 4 (F) 6 (90) poco rit. 5 (G) Andante con moto  $\text{♩} = 90$  4 100 1 legato mp  $\text{b}\text{o}$  (4)  $\text{e}$

(H) 5 110 legato (I)

6 120 3 (J) legato mp  $\text{e}$   $\text{\#}\text{o}$   $\text{b}\text{o}$   $\text{q}\text{o}$   $\text{b}\text{o}$   $\text{b}\text{o}$   $\text{e}$   $\text{q}\text{o}$   $\text{e}$

130 (K) 9 140 3 (L) w.w. 1

mute 2 mute pp 150 open poco rit. (M) Tempo 1<sup>a</sup>  $\text{♩} = 120$  7 160 10

4th Horn

3.

170

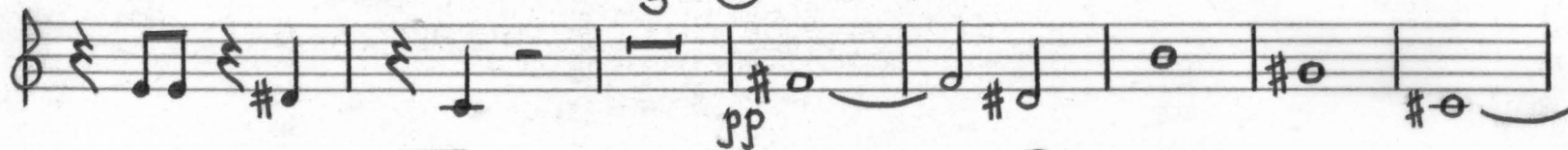
w.w.

3 (N)



180

3 (O)



190

4 (P) 3

200

HORNS

6



210

4

(Q) 4

220



230

(R)

8

(S)

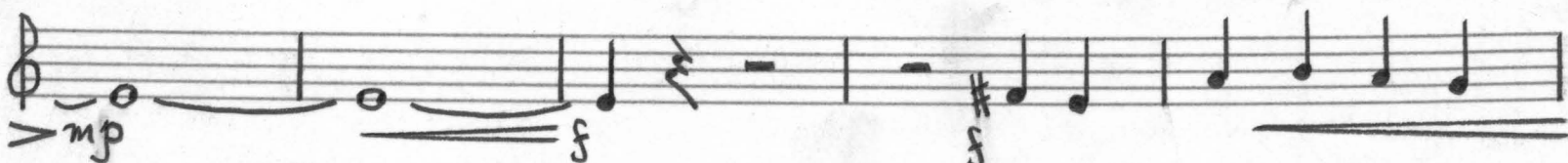
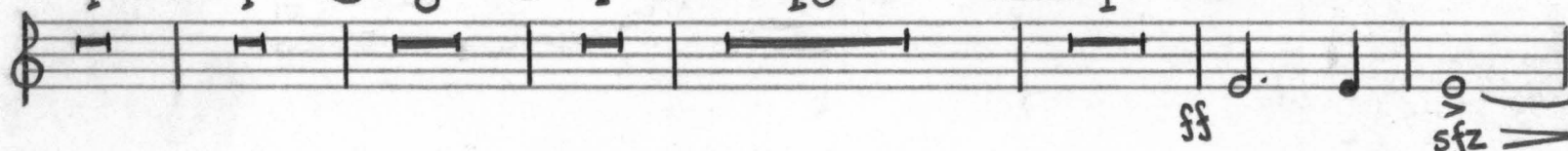
240

10

250

(T)

più mosso  $\text{♩} = 132$



(U)

260



Adagio cantabile  $\text{♩} = 60$ 

TACET

capriccioso  $\text{♩} = 96$  (A)

IV  
BARZELLETTA

(B) 20 6

(C) 30 2 3 4 5

(D) 40 9 1 50 8 bssn. 2 60 6

(E) 70 2 3 4 5 6 7

(F) più mosso  $\text{♩} = 135-144$  80 3 3

(G) 90 100

(H) 110 10 1

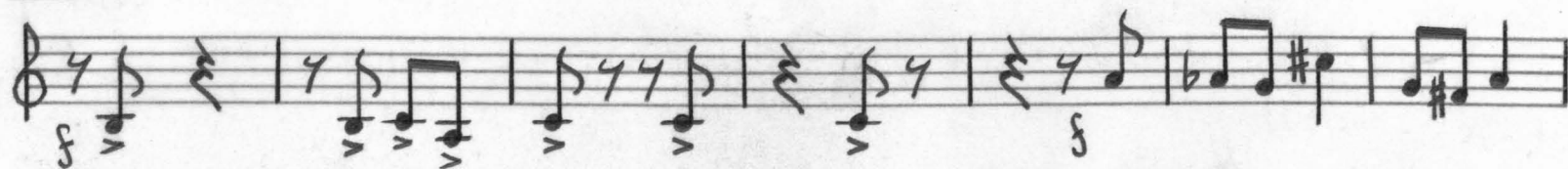
9 10 20 30 40 50 60 70 80 90 100 110

10

5.

120

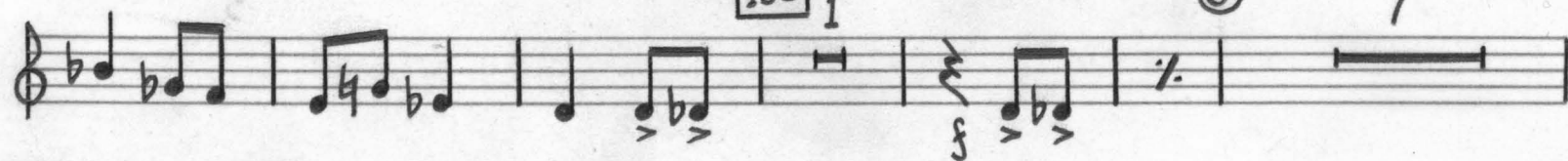
I



130

J

7



140

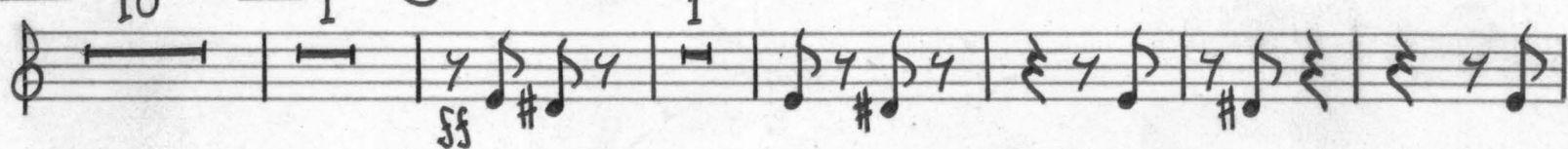
10

150

1

K

1



L

1

160

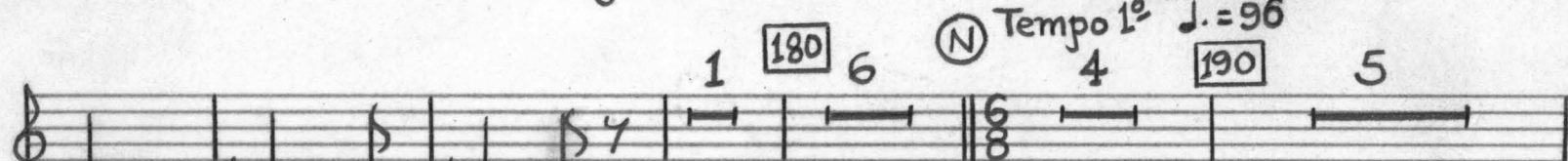


M

subito meno mosso  $\text{♩} = 108$ 

170

3



1

6

N

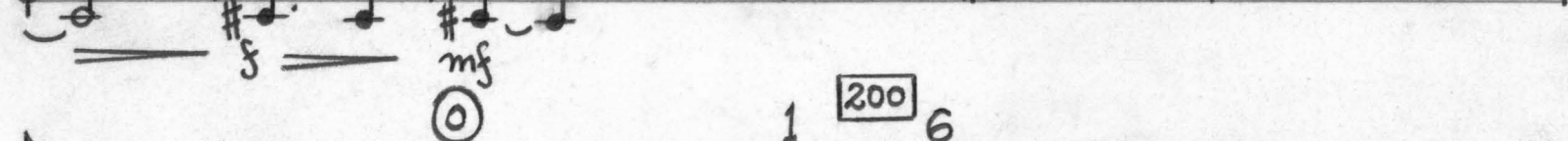
Tempo 1<sup>o</sup>  $\text{♩} = 96$ 

180

4

190

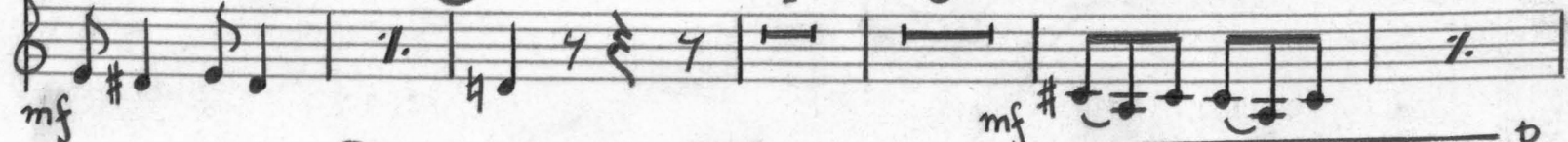
5



200

1

6



P

1

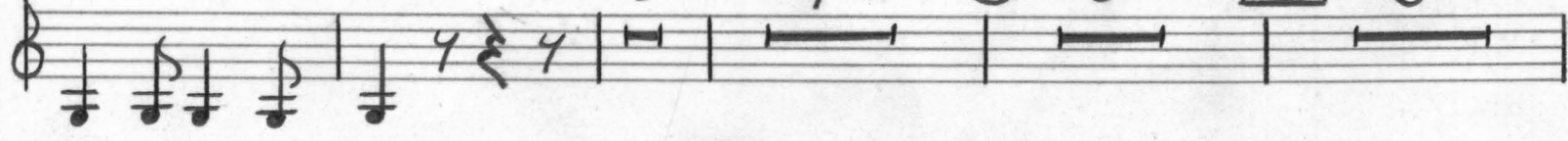
7

Q

3

220

5



230

1

2

