

SUMMER SUITE

WIND QUINTET #5

WALTER ROSS

B \flat Clarinet

Lento affettuoso ♩ = 60

I
AUBADE

B^b Clarinet

mp mf f mf

6 p mf mp p pp

13 mf mf

22 mf

30 f

39 rit. . . . D meno mosso ♩ = 72
gentilmente

48

55 mp mf mp p

64 mf sub.p mf

71 mp sfz p mf

V.S.

2.

B^b clarinet

81 *mf*

88 *ff*

Andante amabile ♩ = 60

II
ARABESQUE

12 *mp*

6 *mp*

11 *p* *mf* *mp* *p* *pp*

16 *mp* *mf* *mp* *p*

20 *mf* *p* *mf*

24 *mp*

28

A

B

C

D

1

12

12

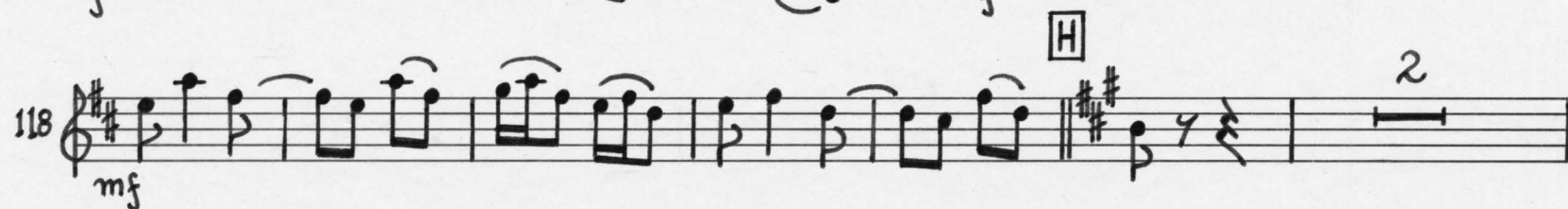
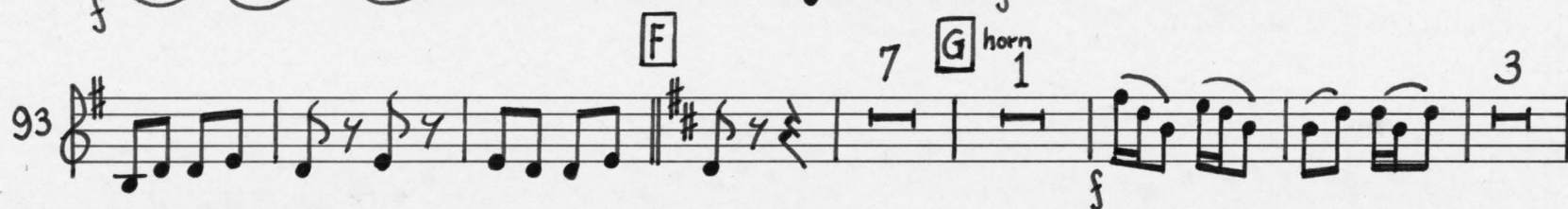
F

3.

Handwritten musical notation for the first staff of 'The Rose Tree'. The key signature is one sharp (F#) and the time signature is 12/8. The melody consists of eighth and quarter notes, with some notes beamed together. The dynamics 'mp' (mezzo-piano) and 'pp' (pianissimo) are indicated below the staff.

Presto festivo ♩ = 132

Handwritten musical score for "The Rose Tree" in G major, 2/4 time. The score is written on ten staves, with measures numbered 1 through 69. It includes various musical notations such as notes, rests, beams, and dynamic markings (f, mp, mf, p). Section markers A, B, C, and D are placed in boxes. The piece concludes with a double bar line and a key signature change to one sharp.

4.
[E] a Tempo

B \flat ClarinetLento espressivo $\text{♩} = 60$ IV
CAVATINA

5.

Handwritten musical score for B \flat Clarinet, Cavatina (IV). The score is in 4/4 time, marked "Lento espressivo" with a tempo of $\text{♩} = 60$. The key signature has one sharp (F#). The score consists of six staves of music, with measures numbered 2, 5, 10, 15, 20, and 25. Dynamics include *p*, *mf*, *f*, *mp*, *pp*, and *sfz*. The piece concludes with a "rit..." marking.

V

TARANTELLA

Allegro animato $\text{♩} = 96$

Handwritten musical score for B \flat Clarinet, Tarantella (V). The score is in 6/8 time, marked "Allegro animato" with a tempo of $\text{♩} = 96$. The key signature has one sharp (F#). The score consists of three staves of music, with measures numbered 3, 11, and 19. Dynamics include *mf*, *f*, and *mp*. The piece includes a section marked "A" and concludes with a "rit..." marking.

6.

B^b Clarinet

29 **[B]** 1 *mp*

37 *mp* *p*

45 **[C]** 1 *mp* **[D]** 2 *mf*

54 *f* *mf* *p* **[E]** 3 *f*

64 *p* *f*

71 **[F]** 1 *p* 2 *mf*

80 *p* *mp* *p* *mp*

91 *p* *mp* *mf*

99 *f* *f* *f* *f* *f* **[G]** (f)

106 *f* *f* *f* *f* *f* 1 *f*

113 

120 

128 

135 

143 

148 

sub. p
poco accel. al fine

