

CARNIVAL OF THE ANIMALS

Charles Camille Saint-Saëns

Violin

arranged for piano trio by
Walter Ross
1989

- 1) INTRODUCTION AND ROYAL
MARCH OF THE LION
- 2) HENS AND COCKS
- 3) WILDASSES
- 4) TORTOISES
- 5) THE ELEPHANT
- 6) KANGAROOS
- 7) AQUARIUM
- 8) PERSONAGES WITH LONG EARS
- 9) THE COOKOO DEEP IN THE FOREST
- 10) AVIARY
- 11) PIANISTS
- 12) FOSSILS
- 13) THE SWAN
- 14) FINALE

I

1

2. All^o moderato

II

1

2

1

4

2

p

mf

Animato

3

3

3

3

3

III

TACIT

Andante maestoso

IV

3.

2

①

② rit...

V TACIT

VI TACIT

VII

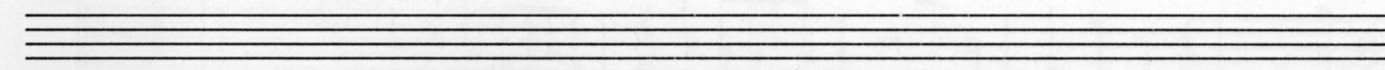
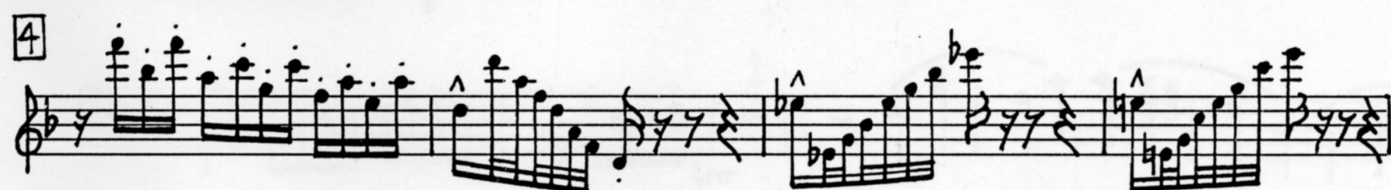
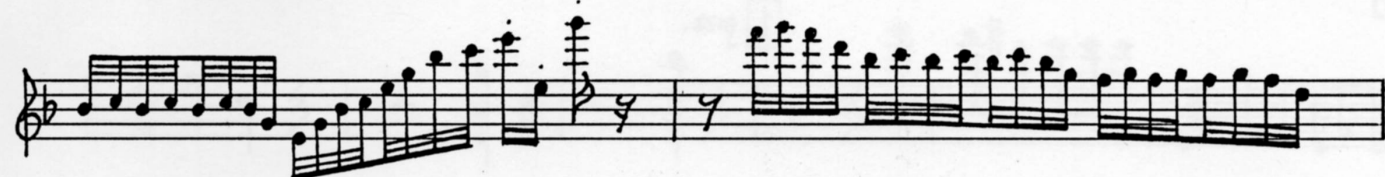
Andantino
Sordino

p

1. _____

Da Capo 2.

Via sordino



6.

Handwritten musical score for guitar, measures 1-8. The key signature has two flats (B-flat and E-flat). Measure 1 has a box containing the number 3. Measure 2 has a box containing the number 4. Measure 3 has a box containing the number 1. The notation includes various chords, single notes, and rests, with dynamic markings *f* (forte) appearing in measures 2, 3, and 7.

Allegro ridicolo

XII

Handwritten musical score for guitar, measures 9-18. The key signature has two flats. Measure 9 has a box containing the number 1. Measure 10 has a box containing the number 2. Measure 11 has a box containing the number 3. Measure 12 has a box containing the number 1. Measure 13 has a box containing the number 2. Measure 14 has a box containing the number 1. Measure 15 has a box containing the number 3. Measure 16 has a box containing the number 1. Measure 17 has a box containing the number 2. Measure 18 has a box containing the number 1. The notation includes various chords, single notes, and rests, with dynamic markings *ff* (fortissimo), *pizz.* (pizzicato), *arco* (arco), *mp* (mezzo-piano), and *espressivo* (expressive) appearing throughout. The piece concludes with a double bar line in measure 18.

5

The musical score for 'The Rose Tree' is presented in three staves. The first staff begins with a treble clef, a key signature of one flat (B-flat), and a common time signature (C). It contains the first line of the melody, featuring a half note G4, followed by eighth notes A4, Bb4, and C5, and then a series of eighth-note runs. The second staff continues the melody, starting with a quarter note G4, followed by eighth notes A4, Bb4, and C5, and then a series of eighth-note runs. A box containing the number '6' is placed above the staff. The third staff concludes the piece with a final cadence, including a half note G4, followed by eighth notes A4, Bb4, and C5, and then a series of eighth-note runs, ending with a double bar line.

XIII TACIT

XIV

Molto allegro

4

1

1

Handwritten musical score for "The Rose Tree" in 4/4 time. The score is written on five staves. The first staff begins with a treble clef, a key signature of one sharp (F#), and a 4/4 time signature. The melody starts with a quarter rest, followed by a series of eighth and quarter notes. The second staff continues the melody with a "simile" marking. The third staff begins with a boxed "2" and continues the melody. The fourth staff begins with a boxed "3" and continues the melody. The fifth staff begins with a boxed "4" and continues the melody. The score includes various musical notations such as rests, notes, beams, and dynamic markings like "f" and "cresc.".

V.S.P.D.Q.

8.

The image displays a musical score for a piano introduction and a waltz section. The score is written for piano and includes various musical notations such as notes, rests, and dynamic markings.

Introduction: The introduction begins with a piano (p) dynamic marking. It features a series of eighth notes and quarter notes, with a waltz time signature (3/4) indicated by a 'W' above the staff. The key signature is one sharp (F#).

Waltz Section: The waltz section begins with a forte (f) dynamic marking. It features a series of eighth notes and quarter notes, with a waltz time signature (3/4) indicated by a 'W' above the staff. The key signature is one sharp (F#).

Rehearsal Markers: The score includes rehearsal markers numbered 6, 7, 8, 9, and 10, which are enclosed in boxes.

Dynamic Markings: The score includes various dynamic markings, including piano (p), forte (f), and fortissimo (ff).

Other Notations: The score includes various musical notations, including notes, rests, and slurs.

