

BASSOON CONCERTO

Walter Ross

Viola

Va.

I

Walter Rose
1983

Allegro agitato d=120
off the string

Handwritten musical score for Violoncello (Va.) in C minor, 4/4 time. The score consists of 10 staves. It begins with a tempo of Allegro agitato (d=120) and "off the string" instruction. The music features various dynamics (p, f, mf, mp), articulations (accents, slurs), and performance markings (pizz., arco). Rehearsal marks 10, 20, 30, 40, 50, 60, and 70 are present. A section marked "B" includes a tempo change to meno mosso (d=108) and a "poco rit." marking. A section marked "C" is labeled "Solo". The score ends with a final measure marked with a double bar line.

KING BRAND
1505 B'WAY, N. Y.

Handwritten musical score for Violoncello (Va.) in G major, featuring various dynamics, articulations, and performance instructions.

Measures 145-150: Solo, *mf*. Measure 150 is boxed.

Measures 151-160: Measure 151 is boxed. Measure 159 is marked *f* and "off the string".

Measures 161-170: Measure 161 is boxed. Measure 162 is marked *ff*. Measure 163 is marked *p*. Measure 164 is marked *f* and "tutti". Measure 170 is boxed.

Measures 171-180: Tutti, *f*. Measure 180 is boxed.

Measures 181-190: Measure 181 is boxed. Measure 182 is marked *poco rit...*. Measure 183 is marked *5*. Measure 184 is marked *8*. Measure 185 is marked *2*. Measure 186 is boxed. Measure 187 is marked *1*. Measure 188 is marked *Tempo II d=108*. Measure 189 is marked *celli 4*. Measure 190 is boxed.

Measures 191-200: Cantabile, *p*. Measure 200 is boxed.

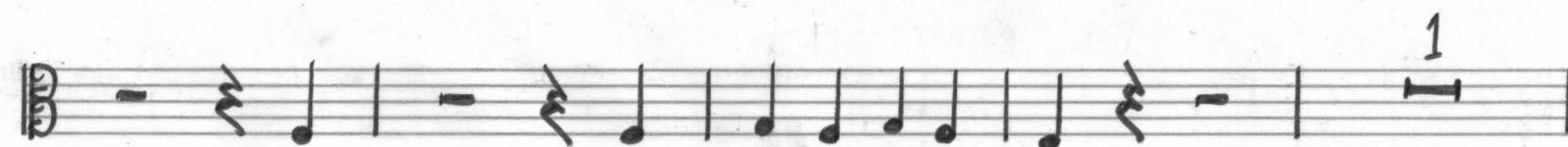
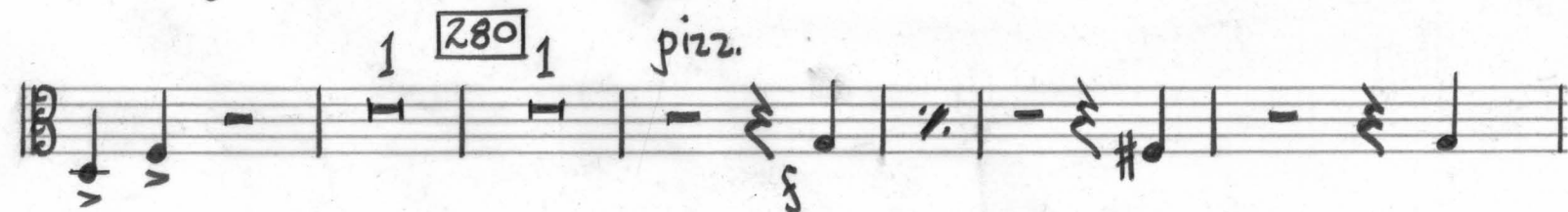
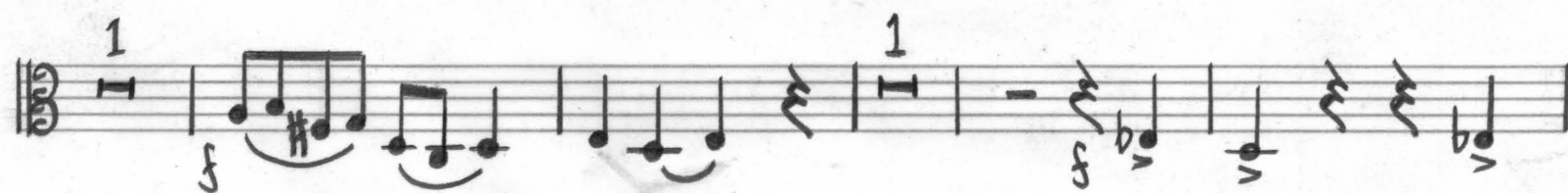
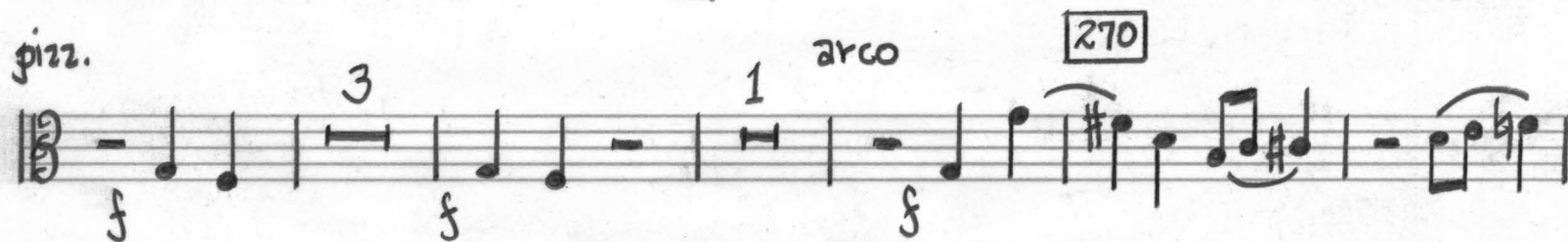
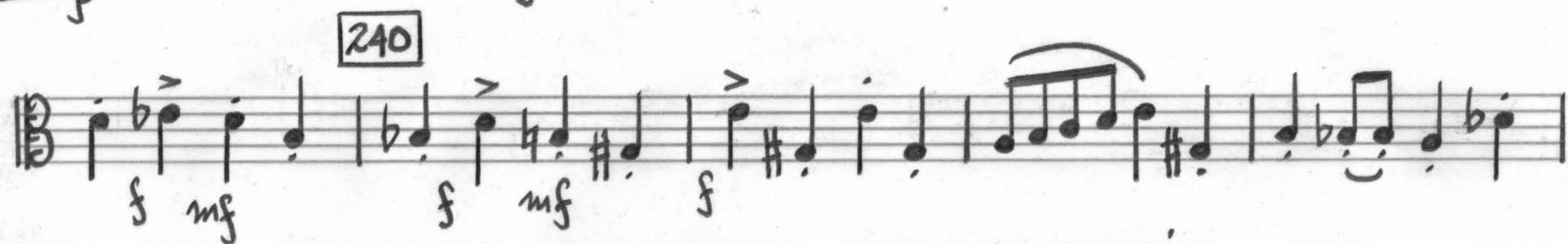
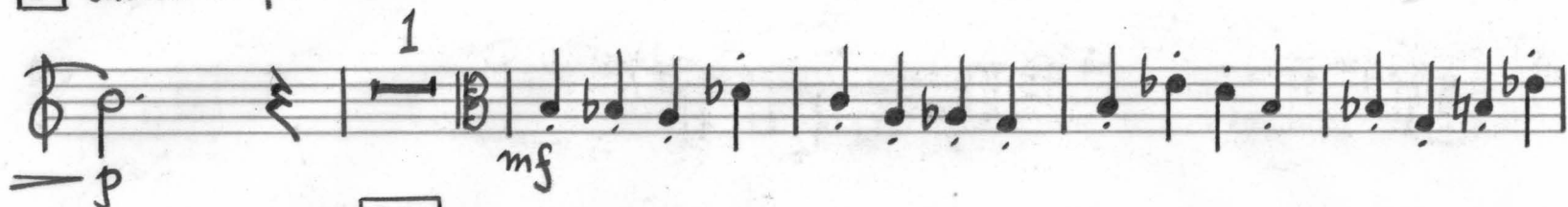
Measures 201-210: Measure 201 is boxed. Measure 202 is marked *mf*. Measure 203 is marked *f*. Measure 204 is marked *f*. Measure 205 is marked *f*. Measure 206 is marked *f*. Measure 207 is marked *f*. Measure 208 is marked *f*. Measure 209 is marked *f*. Measure 210 is boxed.

Measures 211-220: Measure 211 is boxed. Measure 212 is marked *10*. Measure 213 is marked *220*. Measure 214 is marked *3*. Measure 215 is marked *1st Vns.*. Measure 216 is boxed. Measure 217 is marked *2*. Measure 218 is marked *mf*. Measure 219 is marked *mf*. Measure 220 is boxed.

Measures 221-230: Measure 221 is boxed. Measure 222 is marked *poco rit...*. Measure 223 is marked *mf*. Measure 224 is marked *mf*. Measure 225 is marked *mf*. Measure 226 is marked *mf*. Measure 227 is marked *mf*. Measure 228 is marked *mf*. Measure 229 is marked *mf*. Measure 230 is boxed.

Measures 231-240: Measure 231 is boxed. Measure 232 is marked *mp*. Measure 233 is marked *mp*. Measure 234 is marked *mp*. Measure 235 is marked *mp*. Measure 236 is marked *mp*. Measure 237 is marked *mp*. Measure 238 is marked *mp*. Measure 239 is marked *mp*. Measure 240 is boxed.

subito Tempo 1^o d=120



V.S.

Q

290 arco



300

Adagietto pastorale in 3 $\text{♩} = 48$

II

2 solo

Five staves of musical notation for the Adagietto pastorale section. The first staff begins with a treble clef, a key signature of one flat (Bb), and a 3/8 time signature. It contains measures 1 through 24. The second staff contains measures 25 through 29. The third staff contains measures 30 through 34. The fourth staff contains measures 35 through 39. The fifth staff contains measures 40 through 44. Dynamics include *p* (piano), *mp* (mezzo-piano), *mf* (mezzo-forte), and *pp* (pianissimo). Performance markings include 'solo', 'tutti', and 'sul tasto'. Measure numbers 5, 10, 15, 20, and 25 are boxed. A first ending bracket labeled '2' spans measures 1-2 and 21-22. A second ending bracket labeled '3' spans measures 39-40.

30 B solo modo ord.

35 1 p sordino mf tutti sordino 40

C p mf f ff 45

D mf p pp 50 senza sord.

E 1 2 55 5 60 5 65 2 G 3

70 2 poco rit. al mp

niente

7.

III

Va.

Allegro vivace $\text{♩} = 108-112$

pizz. 1 1 1 arco

10

20

A 3 *pizz.* *mf* 2 *mf*

30 B arco

40

50 2 *pizz.* *f*

60 *pizz.* 5 *mf* 3 arco off the string *p*

D 2 3 4 5 6 2 3 4 2 3 4

70

80 E 90

2 3 4 2 3 4 2 3 4

mp *p*

100 *mf*

F *pizz.* 110

1 2 3 4 5 6 7 8 9 10 11 12

f *p*

120

130 *mp*

G *arco* *mp*

140 *mf*

150

H 160 1 3

Handwritten musical score for Viola (Va.) in G major, 4/4 time. The score consists of 16 measures, grouped into four systems of four measures each. Measure numbers 80, 90, 100, 110, 120, 130, 140, 150, and 160 are boxed at the beginning of their respective measures. Chord symbols E, F, G, and H are boxed above measures 80, 110, 130, and 160 respectively. The notation includes eighth and sixteenth notes, rests, and various dynamic markings: *mp* (mezzo-piano), *p* (piano), *mf* (mezzo-forte), *f* (forte), and *pizz.* (pizzicato). There are also articulation marks like accents and slurs. Measure 160 features a first ending bracket and a second ending bracket. The key signature has one sharp (F#) and the time signature is 4/4.

170 **I** *mf* *pizz.* *f* *mf*

180 *f* *mf*

190 **J** *arco* *mp* *mf*

cresc...

au talon

200 *f*

K 210 *pizz.* *mf* *ff*

220 *mf*

1 1

L
arco

Handwritten musical score for Violoncello (Va.) on a 10-staff system. The first staff contains a melodic line with slurs, accents, and dynamic markings 'f' and 'mf'. The second staff continues the melody with triplets and a first finger indication. The third staff includes a boxed measure number '230', triplets, and first finger indications. The fourth staff concludes the phrase with a double bar line. The remaining six staves are empty.