

CAPRICCIO

GALLICO

Walter Ross  
2000

**Trombone III**

Walter Ross

Allegro burlesco  $\text{♩} = 108$

# CAPRICCIO GALLICO

Trombone 3

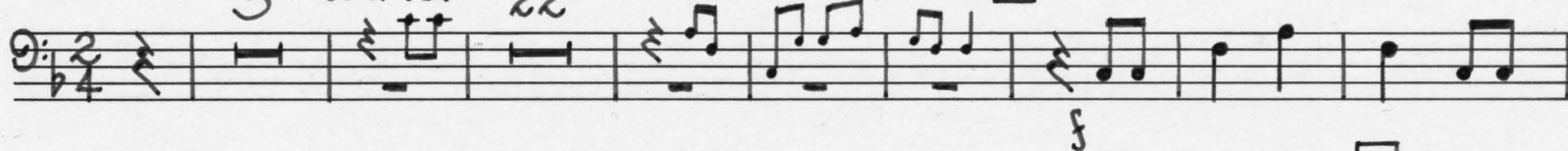
5

Ob. cl. Sax

22

all w.w.

A



B

7

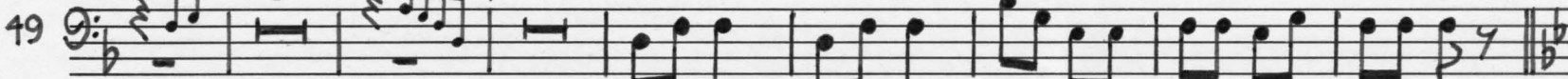


solo bssn.

solo bssn.

8

8



*mp* cresc.

*f*

C mute

euphonium tuba

14

4

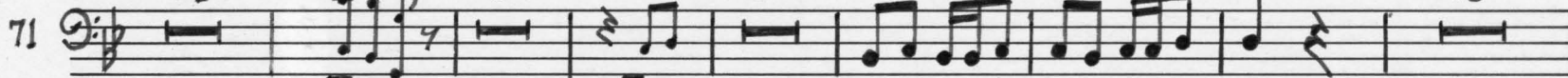
w.w.

9

mute

open

2



rit. ...  $\text{♩} = 90$

D

Obs. Cls. Sax

rit. al.

E

Tempo 1<sup>o</sup>  $\text{♩} = 108$

3

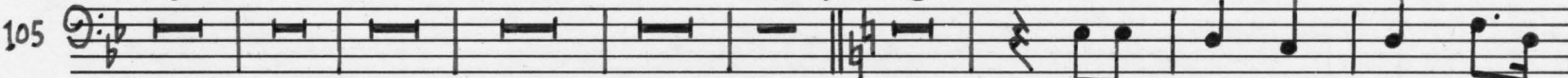
1

12

9

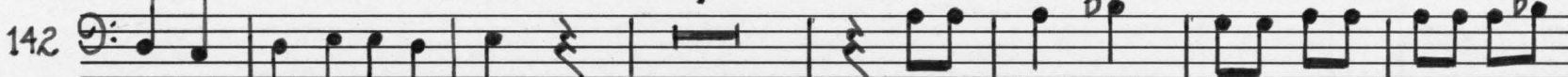
6

2



*mp*

4



picc. Fls. Obs.

*mf*

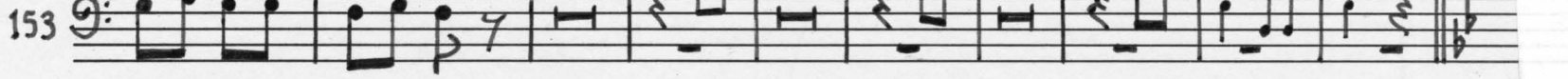
saxs bssns.

5

6

1

1<sup>st</sup>



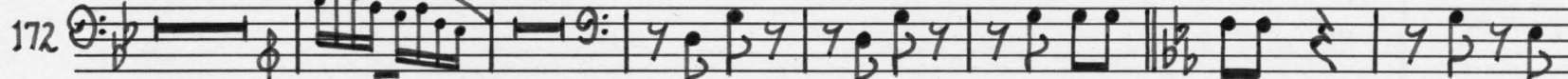
F

30

Picc. Fls. Obs.

2

G



*mf*

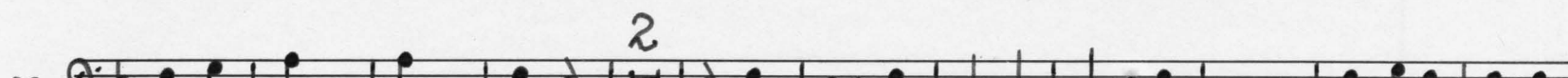
1



*mf*

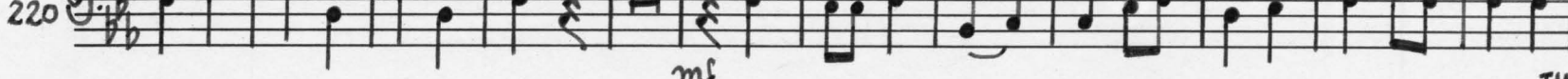
1

*mf*

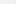


2

*mf*



TIME

**[H]**   
d. = 72 (in 1)

Handwritten musical score for a brass band, measures 233-340. The score is written on six staves, each with a different key signature and time signature. The notation includes various musical symbols such as notes, rests, and dynamic markings. The staves are numbered 233, 259, 293, 314, 330, and 340. The key signatures are B-flat major, B-flat major, B-flat major, B-flat major, B-flat major, and B-flat major. The time signatures are 4/4, 4/4, 4/4, 4/4, 4/4, and 4/4. The score includes various musical symbols such as notes, rests, and dynamic markings. The staves are numbered 233, 259, 293, 314, 330, and 340. The key signatures are B-flat major, B-flat major, B-flat major, B-flat major, B-flat major, and B-flat major. The time signatures are 4/4, 4/4, 4/4, 4/4, 4/4, and 4/4. The score includes various musical symbols such as notes, rests, and dynamic markings.

---

---

---

---

---

---

---

---

---

---

---

---

---