

CAPRICCIO

GALLICO

Walter Ross
2000

Tuba

Walter Ross

CAPRICCIO GALLICO

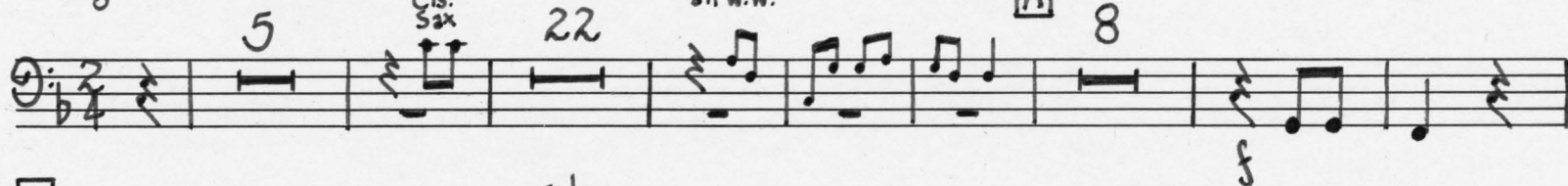
Tuba

Allegro burlesco $\text{♩} = 108$

Obs.
Clas.
Sax

all w.w.

A



B

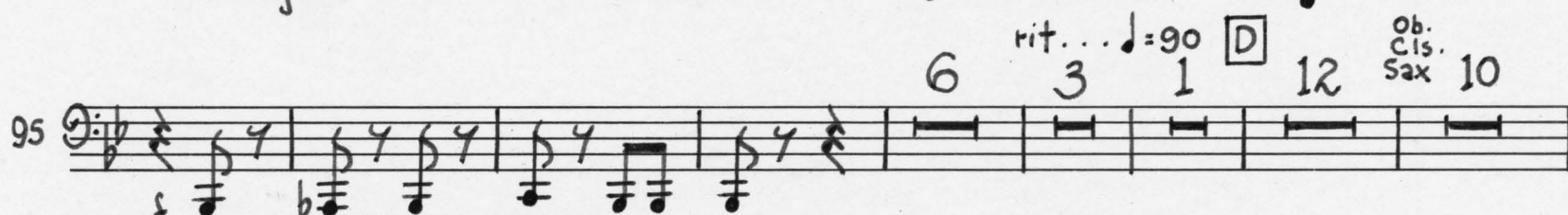
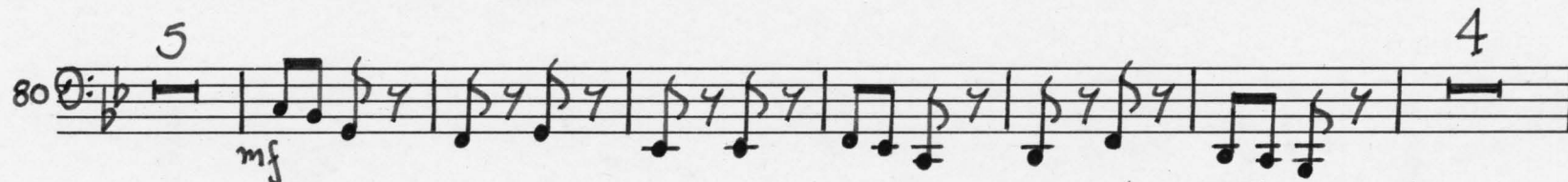
solo
bssn.

solo
bssn.



C

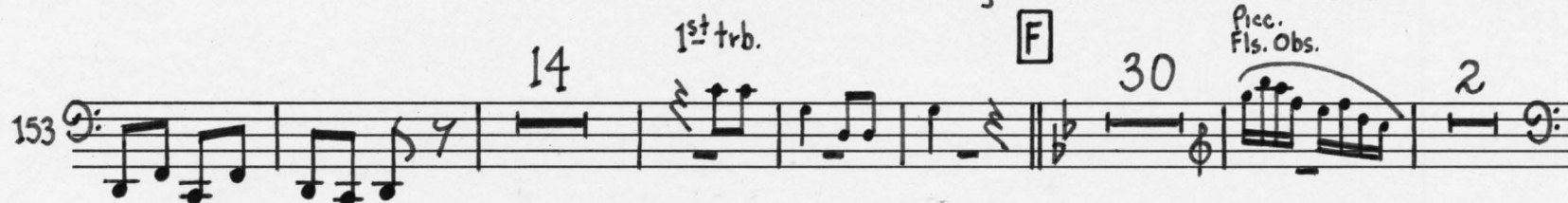
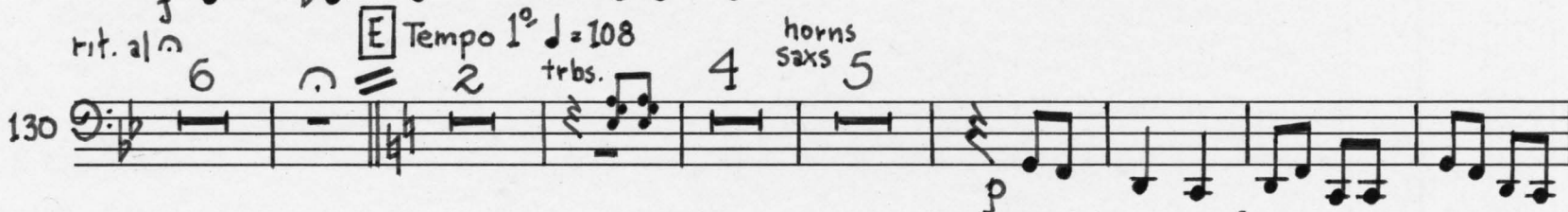
3



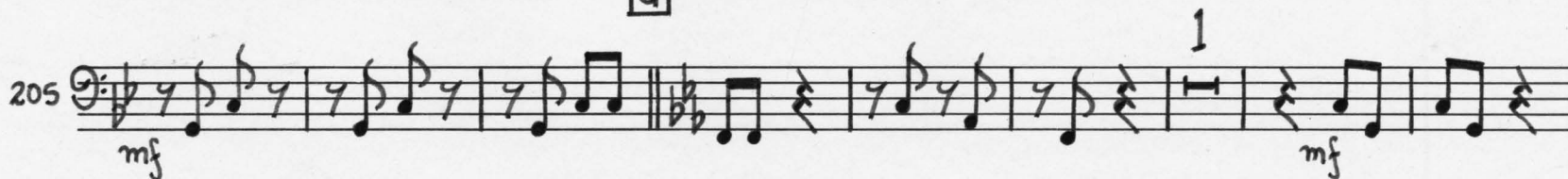
rit. al

Tempo 1^o $\text{♩} = 108$

horns
Saxs



G



2. trbs. euphonium [H] $\text{♩} = 72$ (in 1)

243 $\text{♩} = 72$ (in 1) p

253 7 BCl. Bsns. 10

Picc. Obs. Cls. 5 poco rit. 1 sub. più mosso $\text{♩} = 120$ 3 mp pp f

290 5 3 Fl. Ob. f

305 7 solo bassoon 5 6 mf

328 2 3 BRASS AND EUPHONIUM f

3 2 f

