

CONCERTO
FOR
FLUTE AND GUITAR

Walter Ross

Flute Solo

Solo Flute

CONCERTO FOR FLUTE AND GUITAR

Walter Ross

Festivo $\text{♩} = 90$

9 [10] 2 [A] w.w. 8 [20] 4 [B] BRASS 6 [30] 5 perc. harp 2

[C] cantabile

mf — f — mf — pp

mf — p — mp — mf — p — mf

[50] 10 [60] 1 Bbcl. 1

[70] p — mf

[D] [80] 10 [90] 4 [E] timp. 4 [F] guitar 2 [100] 2

mf

[110]

1 [G] BRASS 7 [120] 9 [H] w.w. 1

V.S.

130

140

7 3 mp mf

mp mf

150

I 4 160 3

mp p

f p

170

mf p mf

mf p

4 mp

mf K mp

190

5 200 10 L 210 str. 2 perc. 1

5 200 10 L 210 str. 2 perc. 1

f

2 [M] 4 [230] 5

tr[#] mf tr[#] f [240] tr[#] [N] 7

ritard.. 2 mf f

Allegretto scherzando ♩ = 108 II 10 2 ♩ = ♩ sempre

3 ♩ 1 ♩ 2 ♩ 1 ♩ 2 1 2 1

1 [A] perc. 3 [20] 1 mp

30 mf

41 f

[B] 2 [50] 5 [C] str. harp 3

4.

Solo FL.

1 1 1 1 1

60

D

mp

70

1

giochevele

mf

80

E

1 1 2 1 1

90

F

oboes
bssns. 7

G Brass

100

1 2 1 1 1 2

H

110

mf

120

mf

130

I

7

140

10

150

6

J BRASS

1

160

1 1 1 1 1 7

170 [K]

1 *mf* *f* *mf* *mp* *f* *M*

180 190 200 210

mp *mf*

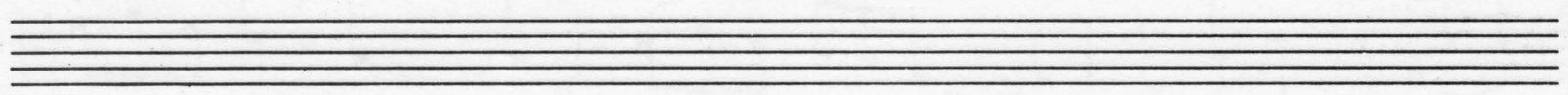
220

f

mf *mp* *mf* 230 *p* 240

mp *p* *pp*

250 *mp* *p* *pp*



6.

III

solo Fl.

Adagio, con eleganza $\text{♩} = 48$

Handwritten musical score for solo Flute, marked Adagio, con eleganza, tempo $\text{♩} = 48$. The score is divided into measures, with measure numbers and section letters (A, B, C, D, E, F, G, H, I) indicated. The key signature is one sharp (F#).

Measure numbers and section letters:

- Measures 4, 5, 2, 3, 10 (FLS. CLS. 4)
- Section B: Measures 15, 20
- Section C: Measures 25, 4
- Section D: Measures 30, 4 (guitar 1)
- Section E: Measures 35, 40, 2
- Section F: Measures 45, 1, 2 (Horn 2)
- Section G: Measures 50, 55, 1
- Section H: Measures 60, 65, 3
- Section I: Measures 70, 2

Dynamic markings and performance instructions:

- mf* (mezzo-forte)
- p* (piano)
- pp* (pianissimo)
- f* (forte)
- mp* (mezzo-piano)
- cresc...* (crescendo)
- guitar 1
- Horn 2

The score includes various musical notations such as slurs, ties, and articulation marks.

75

J

Handwritten musical score for "The Rose Tree" on two staves. The music is in treble clef with a key signature of one flat (B-flat). The tempo is marked "80" in a box. The time signature is 3/4. The piece ends with a double bar line and a repeat sign.

Measure 1: *f* (forte)

Measure 2: *f* (forte)

Measure 3: *f* (forte)

Measure 4: *mf* (mezzo-forte)

Measure 5: *p* (piano)

Measure 6: *p* (piano)

Measure 7: *p* (piano)

Measure 8: *p* (piano)

Allegro con brio $\text{♩} = 120$

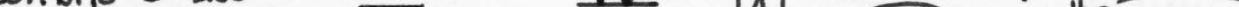
IV

str.
harp.

A

Allegro con brio $\text{♩} = 120$

9 10 10 20 3 str. harp. 1 A



50

mf

The musical score for 'The Rose Tree' is written on a single staff. It begins with a treble clef and a key signature of one sharp (F#). The tempo is marked 'Allegretto' and the dynamics are 'mf'. The melody consists of eighth and sixteenth notes, with some slurs and ties. The score is numbered 50 in a box.

Handwritten musical notation for the first staff of 'L'Allegretto'. The staff is in treble clef and contains a melody starting with a quarter note, followed by eighth notes, and then a series of beamed eighth notes. The tempo marking 'llegro' is written above the staff, and the dynamic marking 'mp' is written below the staff.

[illegible]

70

F BRASS

80

V.S.

G *giocoso*

mf **90** *f*

H *ff* *poco rit. ...* **I** *poco meno mosso* $\text{♩} = 108$ *str.* **110** *1st violins*

J **120** *mp* *mf* **130** *p* *mf*

K *mp* *mf* *mp* *p* *mf*

L $\text{♩} = 90$ *poco rit. ...* *str.* **150** *mp* *poco rit. ...* **M** *subito* *Tempo 1^o* $\text{♩} = 120$ *p*

N *str.* **170** *3* *BRASS* *mp* **180** *mf*

P *mf*

Q *w.w.* *3* **200** *5* *Perc.* *3* **R** *mp*

210 *f* *mf*

Handwritten musical score for Solo Flute, measures 220-230. The score is written on four staves. The key signature has one sharp (F#). The notation includes various musical symbols such as notes, rests, and dynamic markings.

Measure 220: **f** (forte), **220** (measure number), **S** (sforzando).

Measure 221: **f** (forte), **9** (measure number).

Measure 222: **230** (measure number), **1** (first ending bracket), **f** (forte).

Measure 223: **f** (forte), **cresc.** (crescendo).

Measure 224: **ff** (fortissimo).

Measure 225: **fff** (fortississimo).

Measure 226: **fff** (fortississimo).

Measure 227: **fff** (fortississimo).

Measure 228: **fff** (fortississimo).

Measure 229: **fff** (fortississimo).

Measure 230: **fff** (fortississimo).