

CONCERTO  
FOR  
FLUTE AND GUITAR

Walter Ross

**Viola**

VIOLA

CONCERTO FOR FLUTE AND GUITAR

Walter Ross

Festivo J. = 90

pizz.

I

Handwritten musical score for Viola, Concerto for Flute and Guitar, by Walter Ross. The score is in 2/8 time and consists of 150 measures.

**Measures 1-10:** Festivo, J. = 90. *pizz.* (pizzicato). *f* (forte). Measure 10 is boxed.

**Measures 11-20:** Measure 11 is boxed. Measure 15 is boxed and labeled **A**. Measure 19 is boxed and labeled **B**. Measure 20 is boxed.

**Measures 21-30:** Measure 21 is boxed. Measure 25 is boxed and labeled **C**. Measure 29 is boxed and labeled **D**. Measure 30 is boxed.

**Measures 31-40:** Measure 31 is boxed. Measure 35 is boxed and labeled **E**. Measure 39 is boxed and labeled **F**. Measure 40 is boxed.

**Measures 41-50:** Measure 41 is boxed. Measure 45 is boxed and labeled **G**. Measure 49 is boxed and labeled **H**. Measure 50 is boxed.

**Measures 51-60:** Measure 51 is boxed. Measure 55 is boxed and labeled **I**. Measure 59 is boxed and labeled **J**. Measure 60 is boxed.

**Measures 61-70:** Measure 61 is boxed. Measure 65 is boxed and labeled **K**. Measure 69 is boxed and labeled **L**. Measure 70 is boxed.

**Measures 71-80:** Measure 71 is boxed. Measure 75 is boxed and labeled **M**. Measure 79 is boxed and labeled **N**. Measure 80 is boxed.

**Measures 81-90:** Measure 81 is boxed. Measure 85 is boxed and labeled **O**. Measure 89 is boxed and labeled **P**. Measure 90 is boxed.

**Measures 91-100:** Measure 91 is boxed. Measure 95 is boxed and labeled **Q**. Measure 99 is boxed and labeled **R**. Measure 100 is boxed.

**Measures 101-110:** Measure 101 is boxed. Measure 105 is boxed and labeled **S**. Measure 109 is boxed and labeled **T**. Measure 110 is boxed.

**Measures 111-120:** Measure 111 is boxed. Measure 115 is boxed and labeled **U**. Measure 119 is boxed and labeled **V**. Measure 120 is boxed.

**Measures 121-130:** Measure 121 is boxed. Measure 125 is boxed and labeled **W**. Measure 129 is boxed and labeled **X**. Measure 130 is boxed.

**Measures 131-140:** Measure 131 is boxed. Measure 135 is boxed and labeled **Y**. Measure 139 is boxed and labeled **Z**. Measure 140 is boxed.

**Measures 141-150:** Measure 141 is boxed. Measure 145 is boxed and labeled **AA**. Measure 149 is boxed and labeled **AB**. Measure 150 is boxed.

**Performance Instructions:**

- f* (forte)
- mf* (mezzo-forte)
- mp* (mezzo-piano)
- p* (piano)
- pp* (pianissimo)
- arco non vib.* (arco non vibrato)
- cell.* (cello)
- cantabile*
- harp 7*
- off the string*
- simile*
- off*
- w.w.* (with woodwinds)

**Rehearsal Marks:** A, B, C, D, E, F, G, H, I, J, K, L, M, N, O, P, Q, R, S, T, U, V, W, X, Y, Z, AA, AB.

**Measure Numbers:** 10, 20, 30, 40, 50, 60, 70, 80, 90, 100, 110, 120, 130, 140, 150.

2. **I**

1

**160**

**J**

**170**

**180** 10 **190** 4 **K** <sup>CL. BSSN. HNS.</sup> 6 **200** 10

**210** **L** off 2 3 6 **220** 3 off

**M** 3 **230** 5 [FL. solo] 5

**240** 1 **N** muted brass 7 *sul tasto* *ritardando . . . .*

**ppp**

*Allegretto scherzando* ♩ = 108

*pizz.*

**II** *pizz. sempre*

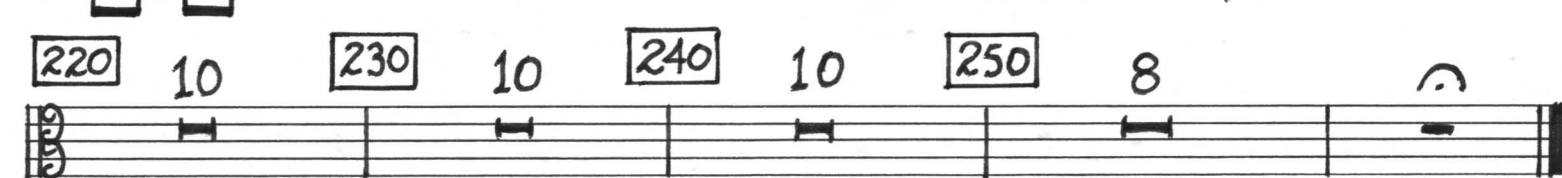
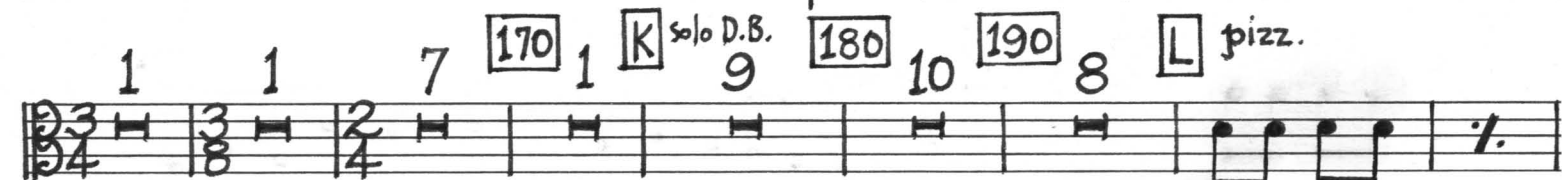
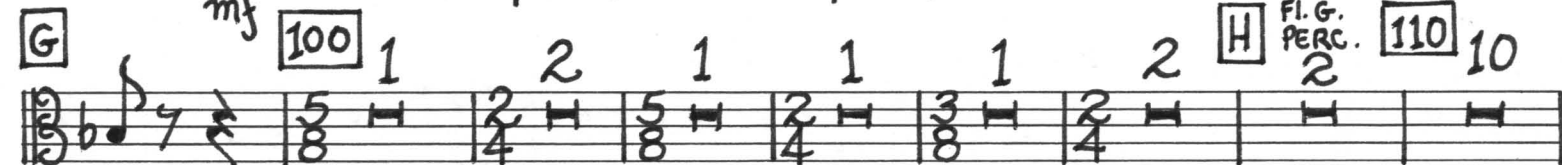
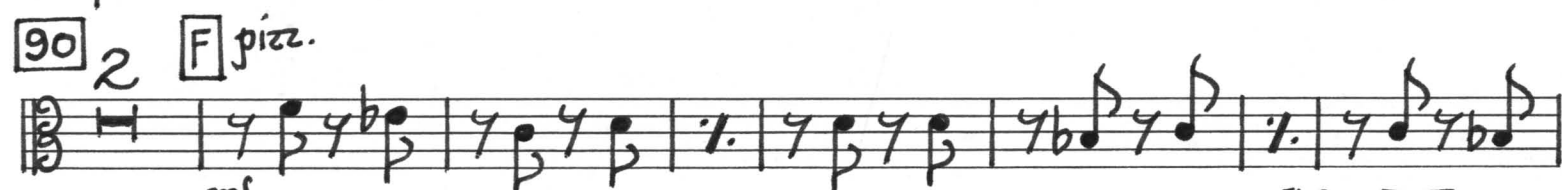
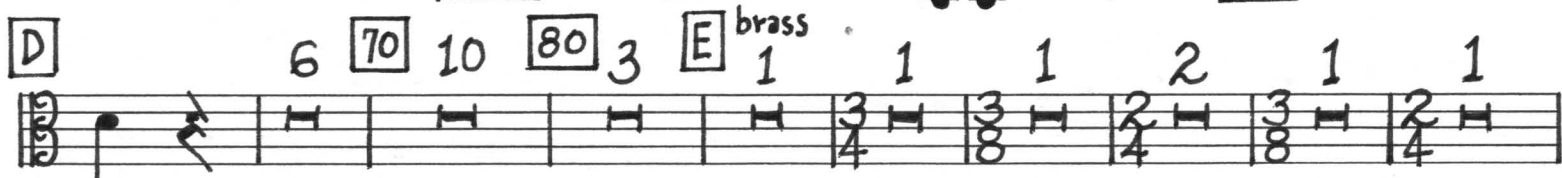
**10**

**A** 2

**20** 10 **30** 10 **40** 7 **B** <sup>OBOES BSSNS.</sup> 3 **50** 5 **C** *pizz.*

**mf**

[60]



### III

arco

mp

mf

A

sult tasto

f

mf

p

10

sordino

4

15

B

5

20

5

25

C

W.W.

4

D

Vns.

(sord.)

30

f

via sordino

35

5

40

E

sult tasto

mf

p

F

1

45

2

spiccato

pp

50

2

3

4

5

6

7

G

sordino

55

5

60

2

H

FLS.

CL.S.

3

65

3

I

sordino

mf

70

2

f

mf

p

75

1

J

(sord.)

p

1

80

p

via sordino

pp

Allegro con brio ♩ = 120

# IV

5.

9 [10] 4 pizz

1 [20] 3 arco mf A 5 [30] 2 B Vns. punta d'arco

40 3 C 6 [50] 9 D perc. 1 [60] 7 E modo ord. sfz

punto d'arco pp [70] sfz mf

al. . . . . modo ord.

F 1 [80] 3 G 7 [90] 3 H 2 3 f 4

100 sfz 4 poco rit. I poco meno mosso ♩ = 108 lyrico

110 mp

120 J 10 [130] 5 K cl. 5 [140] 7 poco rit.

L ♩ = 90 150 mp p

1 160 1 poco rit. M subito Tempo 1<sup>o</sup> ♩ = 120

6. [N] punta d'arco

170

Handwritten musical score for a string instrument, featuring various measures and performance instructions.

**Measure 170:** *p* (piano). *al. . . . . modo ord.* (allegro, . . . . . in the original mode). *2 3 4 9* (fingerings).

**Measure 190:** *[P] 1 pizz.* (pizzicato). *1* (fingering). *[Q] pizz.* (pizzicato). *3* (fingering).

**Measure 200:** *[200]* (measure number). *f* (forte).

**Measure 210:** *[210]* (measure number). *10* (fingering). *[S] brass* (brass section). *pizz.* (pizzicato). *2 arco* (arco).

**Measure 220:** *[220]* (measure number). *f* (forte). *cresc. . . .* (crescendo). *ff* (fortissimo).

**Measure 230:** *[230]* (measure number). *2* (fingering). *div.* (divisi). *f* (forte). *fff* (fortississimo).

**Measure 240:** *cresc.* (crescendo). *ff* (fortissimo). *fff* (fortississimo).