

**WALTER ROSS**

# **CONCERTO**

**FOR BRASS QUINTET AND ORCHESTRA**

**B $\flat$  Trumpet 2**

# Concerto for Brass Quintet and Orchestra

1

2nd TRUMPET in B $\flat$

I

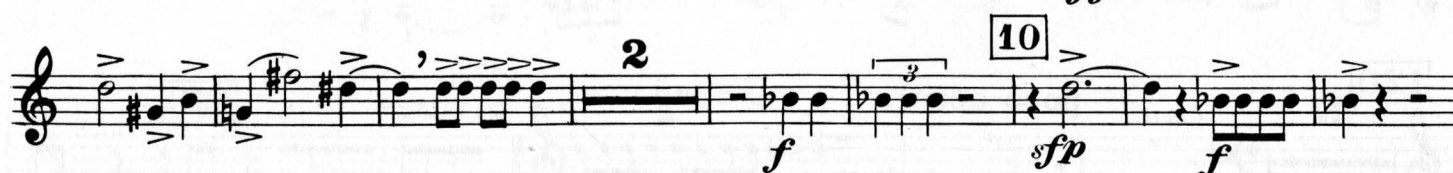
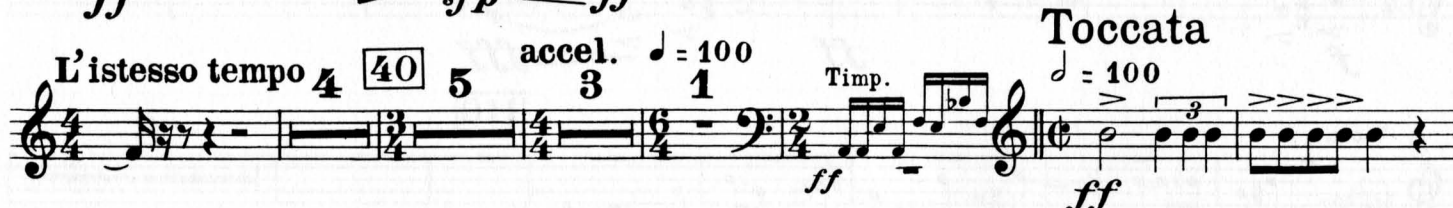
WALTER ROSS

## Introduction and Toccata

Largo  $\text{♩} = 40$



Poco più mosso  $\text{♩} = 60$



2nd TRUMPET in B $\flat$ 

1 4 20 3

*f* *mf* *p* *f*

1 30

*sfz* *sfz* *sfz* *simile*

STRAIGHT MUTE 40 4 50 4

1 2 Horn. 1 60 1 OPEN 1

*f* *ff* *f* *p*

70 2

80 1 1

*ff* *f* *ff*

*pesante* *d* = 90 90 10 100 5

Viola 110 8

120 5 Cello poco accel. *d* = 100 130 1/2 VALVES *mf*

2nd TRUMPET in B $\flat$ 

3

*modo ord.*

musical score for 2nd TRUMPET in B $\flat$ , measures 140-201. The score is written in treble clef with a key signature of one flat (B $\flat$ ). The tempo/mood is marked *modo ord.* (moderate). The score includes various dynamics and articulations:

- Measures 140-149: *f* (forte), *p* (piano), *mf* (mezzo-forte), *f* (forte), *mf* (mezzo-forte), *f* (forte).
- Measures 150-159: *mf* (mezzo-forte), *ff* (fortissimo), *fff* (fortississimo).
- Measures 160-169: *ff* (fortissimo), *fff* (fortississimo), *sub.p* (subito piano).
- Measures 170-179: *ff* (fortissimo), *fff* (fortississimo), *sub.p* (subito piano).
- Measures 180-189: *mf* (mezzo-forte), *p* (piano), *f* (forte).
- Measures 190-199: *ff* (fortissimo), *f* (forte), *f* (forte).
- Measures 200-201: *f* (forte), *ff* (fortissimo).

The score includes various musical notations such as slurs, ties, and dynamic markings.



2nd TRUMPET in B $\flat$  Intermezzo Notturmo

$\text{♩} = 60$  8 Eng. Horn. 10 6 Fl. 20

4 Fl. 2 WA-WA MUTE 30  $pp$   $\text{mf}$

2 40  $p$   $p$   $p$

50  $f$   $p$   $mf$   $p$   $sfz$   $p$   $p$

poco accel.  $\text{♩} = 80$  1 OPEN  $f$   $sfz$

60 7 70 10 80 6  $p$   $mf$   $pp$

Alto Fl. 90 STR. MUTE Percussion improvise 3 seconds OPEN  $pp$   $mf$   $f$   $pp$   $f$   $p$   $mf$

a tempo  $\text{♩} = 60$  1 100  $mf$   $p$   $mf$

1 110 10 120 8  $p$   $pp$

# III Variations

2nd TRUMPET in B $\flat$ Moderato  $\text{♩} = 90 - 100$ 

9 10 7 Viola 20 10 30 4

Fl. Cl. 4 40 1 *sf p*

50 3

60 *fff* *f* *ff* *sf p* *ff* *p*

70 *f* *f* *f* *sf p* *f*

80 *mf* *ff* *poco rit.* *fff* *p*

90 MUTE 1 2 4 1 6 2

100

2nd TRUMPET in B $\flat$ 

Solo Violin **110** 8 **120** 1 Oboe 2

**130** STRAIGHT MUTE 2 1

*sfp* *f* *p*

OPEN 1 1

*sfp* *f* *sfp* *f*

**140**

*sfp* *ff* *f* *mf* *ff* *mf*

STRAIGHT MUTE 1 **150**

*mf* *p* *p* *mf* *p*

**160** **170** Allegro = 120 **180** OPEN 3 I. Trp.

8 10 5 4 3 1 3

*mp*

**190** 1 2

*f* *f*

**200** 2

*ff* *ff*

**210** simile

*sfp* *fff*