

VIOLIN CONCERTO

Walter Ross

Violin 1

Allegro animato $\text{♩} = 108$

I

Violin I

p

A

7

poco cresc.

mf

13

B

26

C 8 **D** w.w. 7 **E** perc. 2 solo violin 11

32

F pizz.

64

mf

molto rit. **G** *meno mosso* $\text{♩} = 72$

1 3 arco

74

f

H

85

10

mf *p*

w.w.

I

100

8

mp *mf* *f*

114

mf *p*

7

2. J W.W. accel. K Tempo 1° d=108

127 11 3 f

146

152 L 16 M solo ff

174 tutti ff N 7

187 O pizz. mf

197 P 8 Q 11 molto rit. R meno mosso d=72 S Va. cello 2 arco mp mf

235 mp f mp > p 4 T Obs. Bsns. 5

252 Solo Vn. Violas horn 11 poco rit. f p sub. Tempo 1° d=108 1 pizz.

271 mf

280 V 1 arco ff

289 302 336 353 384

II

Lento grazioso ♩ = 60

6 19 33

4.

poco rit. [G] meno mosso $\text{♩} = 48$ (in 1)

[H]

49 $\text{♩} = 2$ $\text{♩} = 4$ $\text{♩} = 8$ solo Vn. cello mf f mf

68 mp mf f p [I] 10 [J] w.w. 3

86 f

94 [K] 7 (pizz.) 7 (pizz.) 8 (pizz.) [L] arco p mf

123

131 [M] 11 [N] mf p mf f mf

150 7 poco rit. [O] Tempo 1^o $\text{♩} = 60$ [P] 6 [Q] 4 mp p

182 Violas 1 [R] f mf mp $\text{p} > \text{pp}$ mp solo

188 [S] mf

192 [T] 2 6 mp p

(tutti) Allegro burlando $\text{♩} = 120$

au talon

8 *pizz.*

25 *arco* **A** 11

B solo

46 *mf*

53 *tutti* 4

C 15 **D** brass 7 **E**

63 *f*

91 4 **F** 10 **G** *perc. piano* 15 *muted brass* 7 **H** *pizz.* *mf*

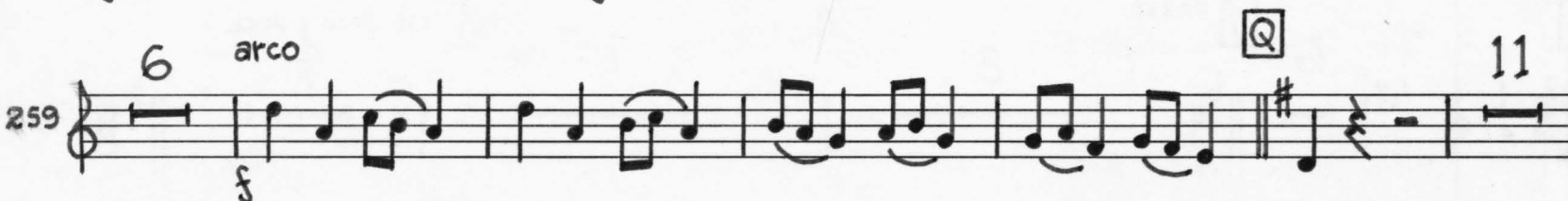
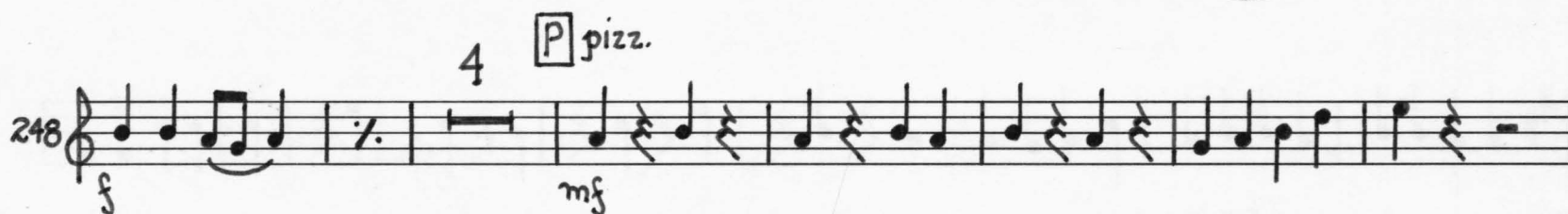
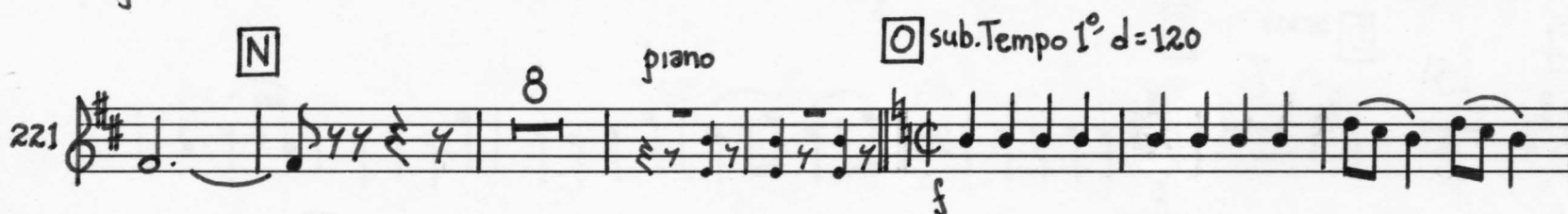
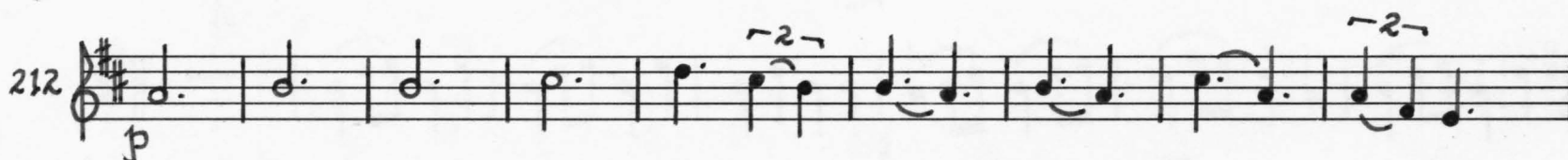
131

I 6 **J** brass 8 Fl. 7 *rit. poco a poco* 4

139 $\text{♩} = 120$

6.

Vn. I

[K] $\text{♩} = 60$ grazioso
solo

287 *tutti*

294 *7* *5* *solo Vn. piano D.B.* *19* *W.W.* *2* *T* *f* *f*

328 *8* *U* *f* *2* *f*

345 *7* *V* *f* *2*

358 *p* *W* *f*

366 *2* *ff* *ff*