

A
JEFFERSON
SYMPHONY

WALTER ROSS

B \flat Trumpet 2

2ND TRUMPET B^b

JEFFERSON SYMPHONY

WALTER ROSS

ADAGIO $\text{♩} = 60$

8 10 2

ff *p* *f* *p* *f* *p*

2

1 1 20 2 A *più mosso* $\text{♩} = 96$
mutes *sfz* *p*

1 (mutes) *sfp* *f*

30 7 1 40 1

1 1 1 (mutes) *sfp* *sfp* *sempre*

open 2 50 3

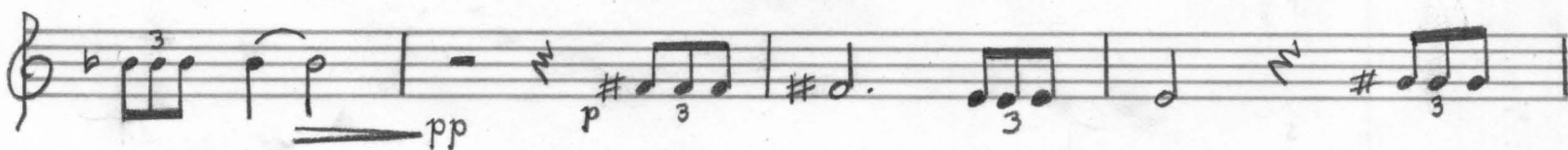
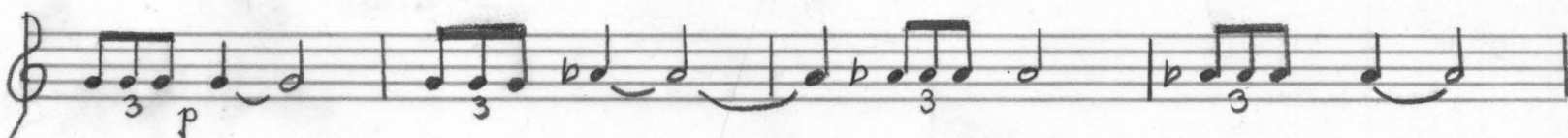
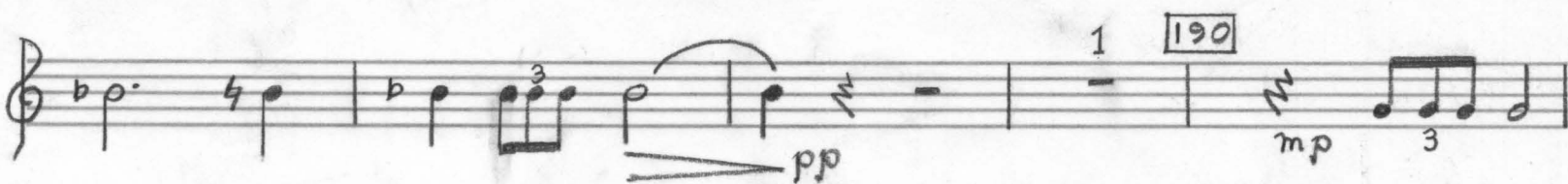
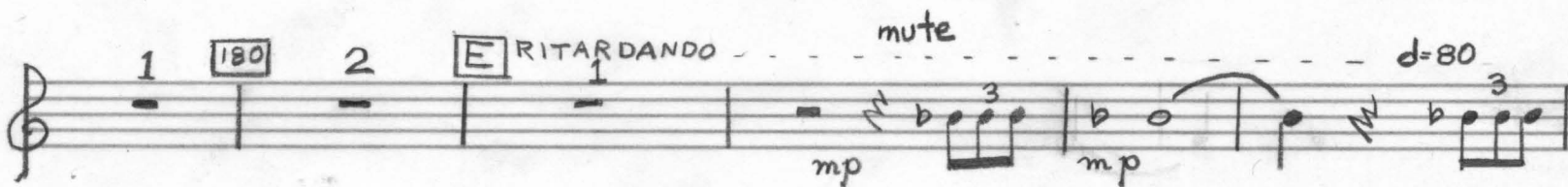
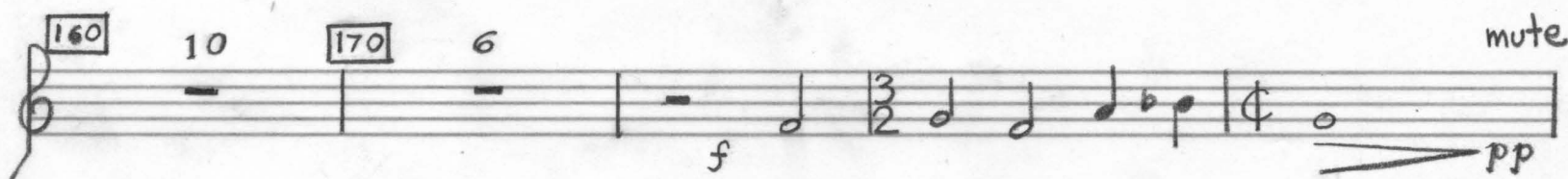
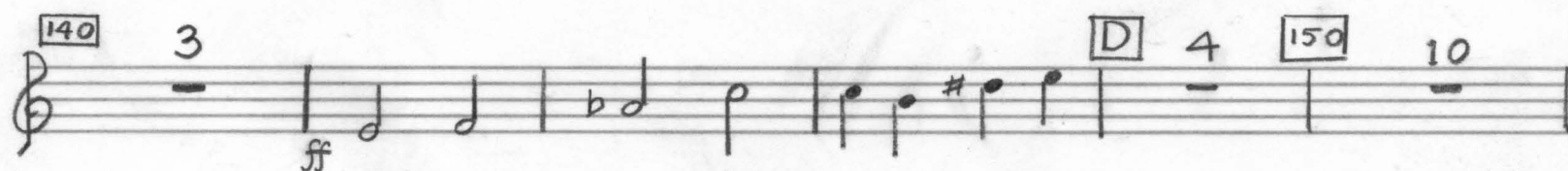
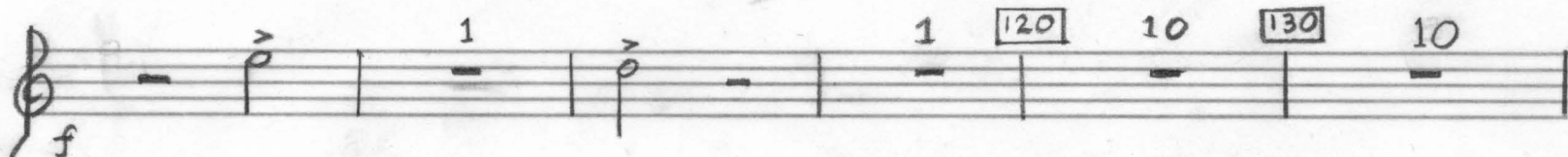
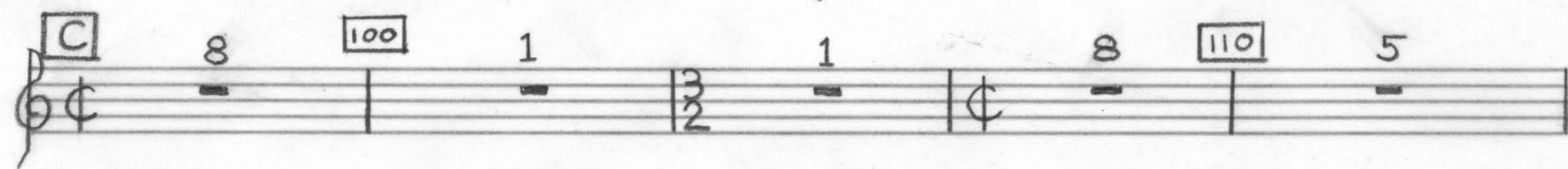
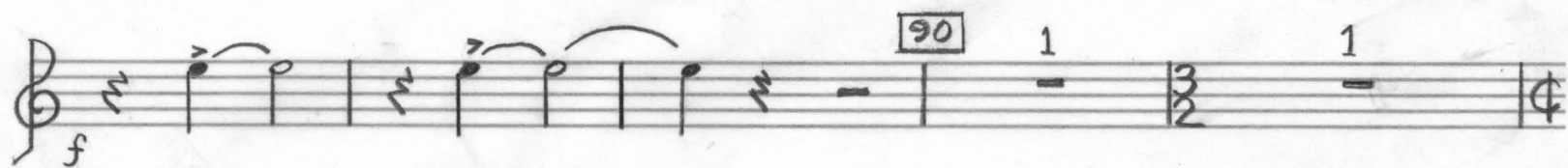
60 6 5 1 1 1

70 3 B *subito allegro* $\text{♩} = 120$ *f* *ff* *f* *p*

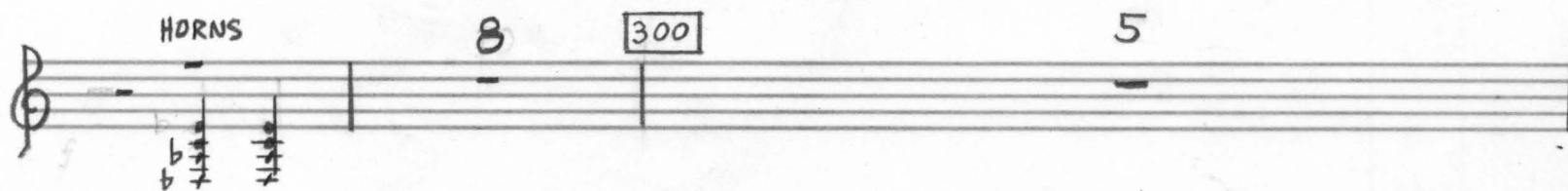
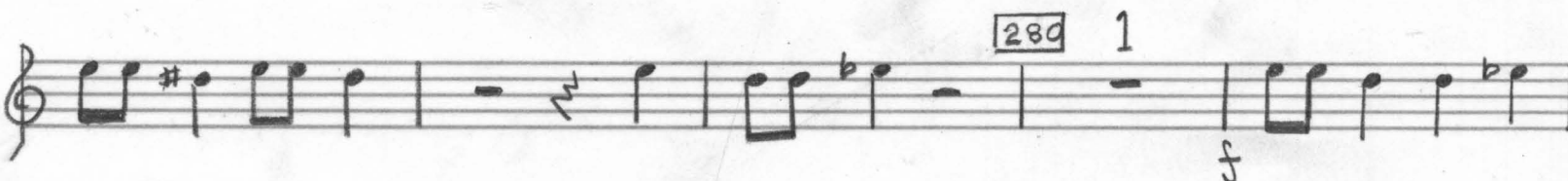
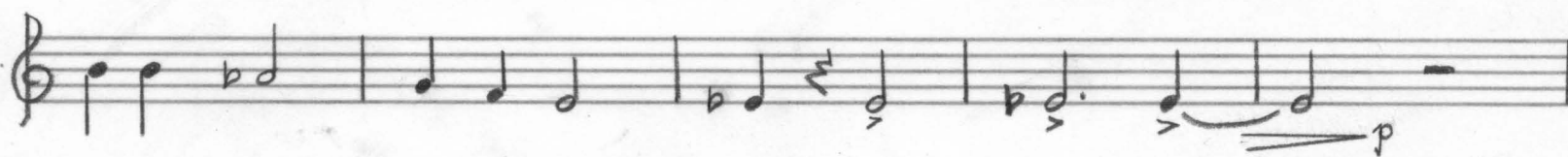
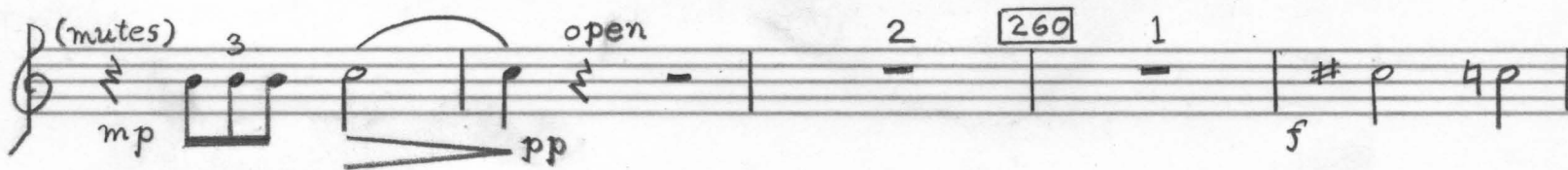
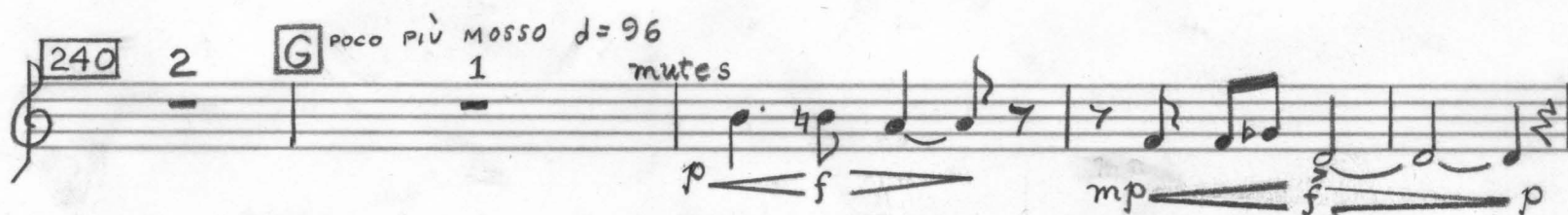
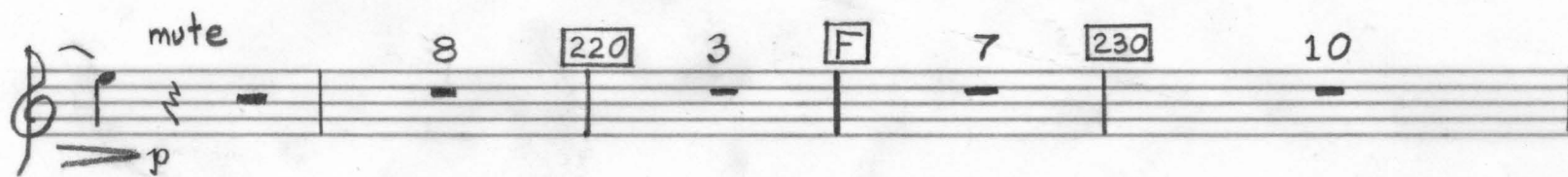
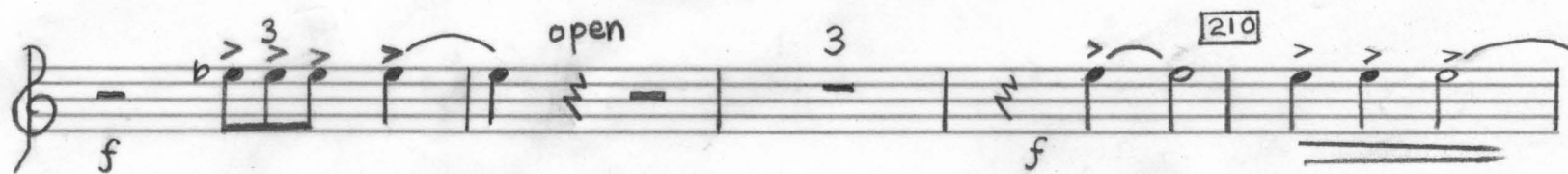
80 3

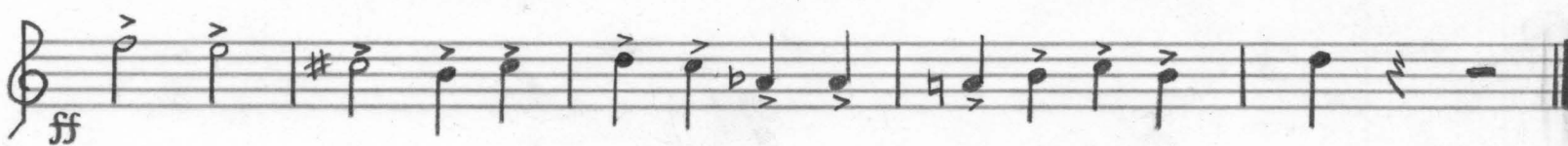
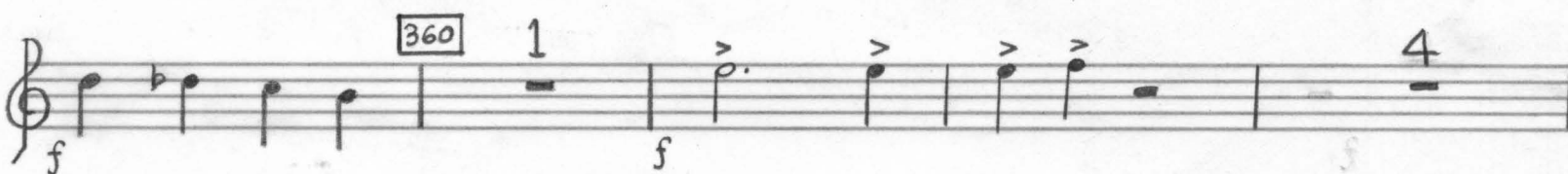
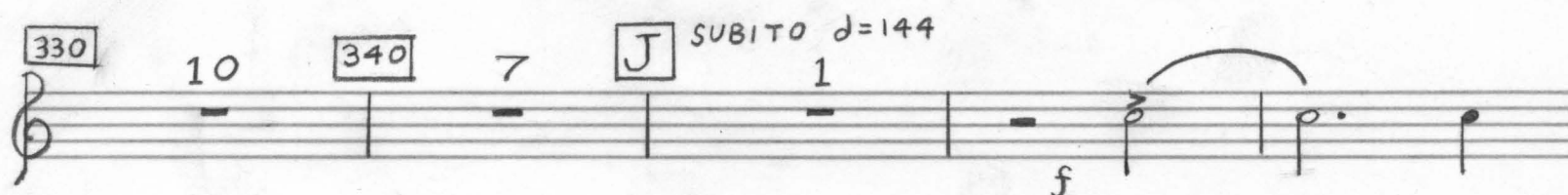
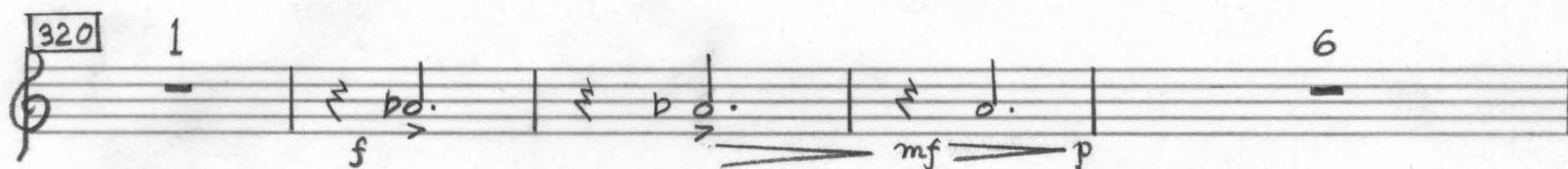
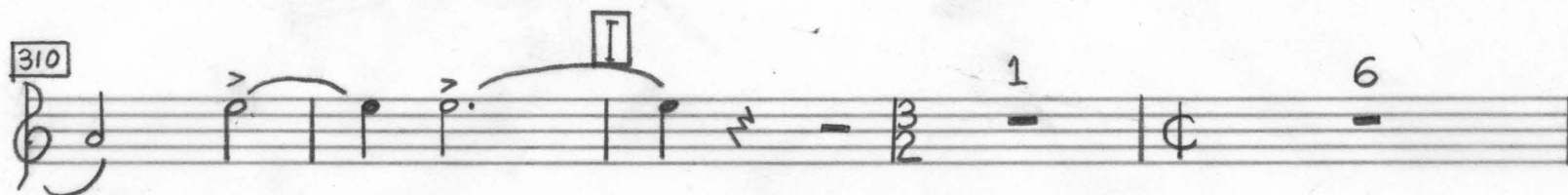
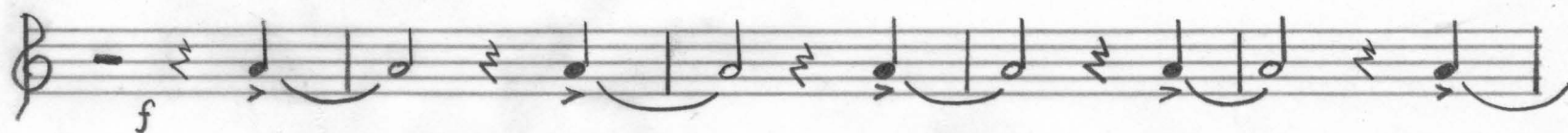
2ND TRUMPET B \flat

p 2



2ND TRUMPET B \flat
P3





II

PRAYER FOR PEACE

TACET

III VISION

LARGO $\text{♩} = 60$

5 $\text{← } \text{♩} = \text{♩} \text{ →}$ 3 ... 10 $\text{♩} = 120$ 10 20 8

30 7 A 2

40 4 muted 50 (mutes) 4 mf p

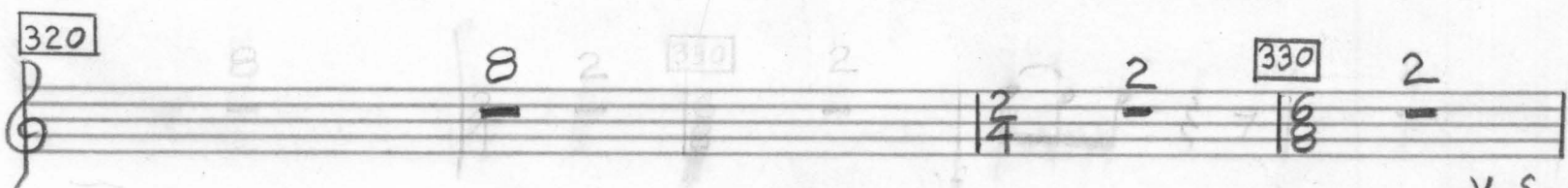
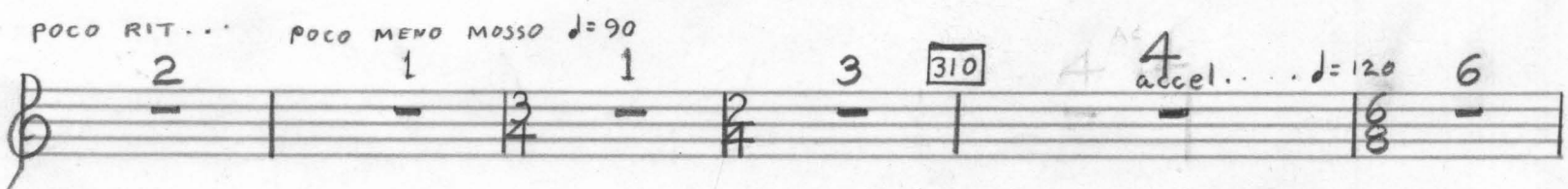
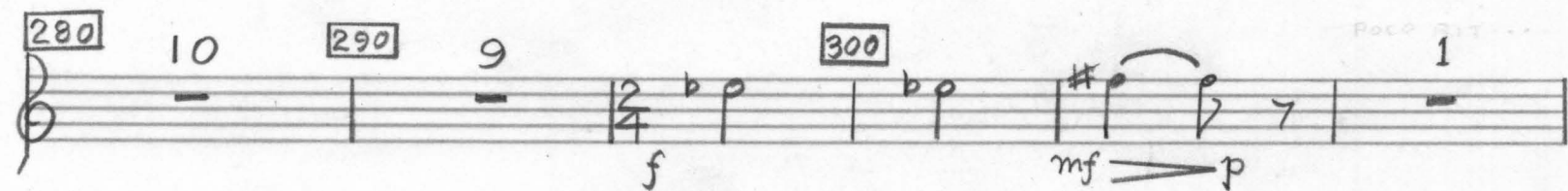
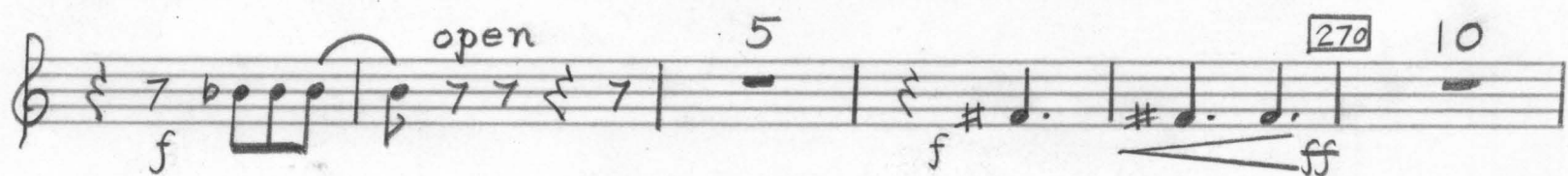
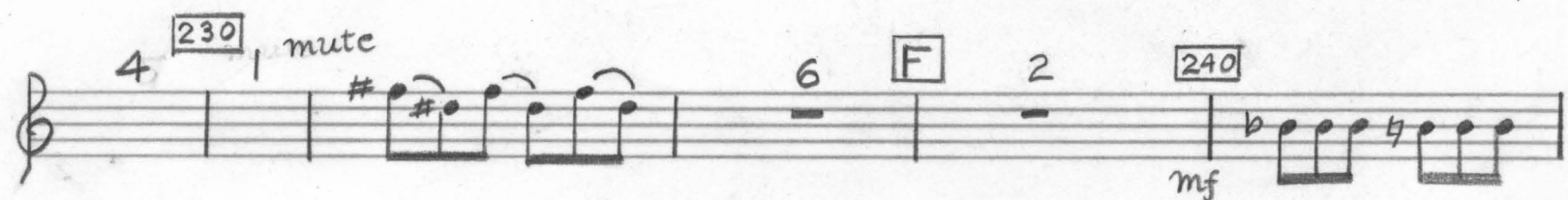
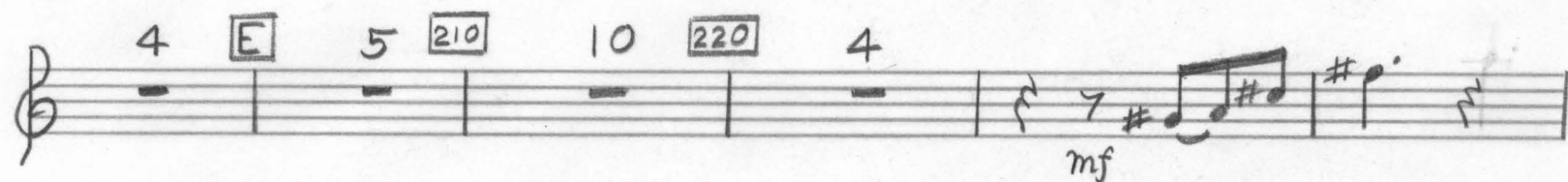
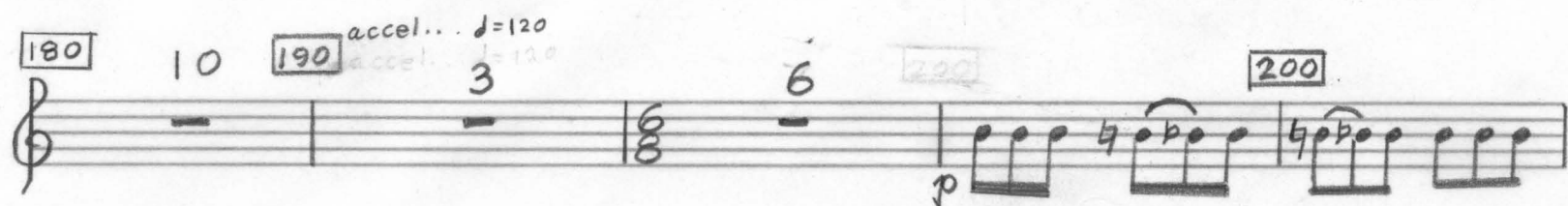
60 4 (mutes) mf open 7 7 ♩ 7

2 70 2 1

80 sfz p sfz p B mute 1 mf

90 9 100 5

(mute) mf 110 1 $\text{♩} = \text{♩}$ L'ISTESSO TEMPO 9 120 10



V.S.

2ND TRUMPET BV
p7

Handwritten musical score for "The Rose Tree" on three staves. The first staff has a treble clef and a key signature of one sharp (F#). It contains two measures of music, each starting with a forte (f) dynamic and a slur over two eighth notes. The second staff also has a treble clef and a key signature of one sharp. It contains two measures of music, each starting with a fortissimo (ff) dynamic and a slur over two eighth notes. The third staff has a treble clef and a key signature of one sharp. It contains two measures of music, each starting with a fortissimo (ff) dynamic and a slur over two eighth notes. The piece ends with a double bar line.