

A
JEFFERSON
SYMPHONY

WALTER ROSS

Double Bass

A JEFFERSON SYMPHONY

DOUBLE BASS

WALTER ROSS

ADAGIO $\text{♩} = 60$

I
REVOLUTION

1975

ff > f > mf > p

10

ARCO

PIZZ.

f > p f > p

20

PIZZ.

f

A più mosso $\text{♩} = 96$

30

ARCO

p

ff

40

PIZZ.

mf

f

50

ARCO

ff

Handwritten musical score for "The Rose Tree". The score is written on two staves. The first staff begins with a treble clef and a key signature of one flat (B-flat). It contains a melody with a half note G4, a half note F4, a quarter note E4, and a quarter note D4, followed by a whole rest. The second staff begins with a bass clef and a 3/4 time signature. It contains a bass line with a half note G3, a half note F3, and a quarter note E3, followed by a whole rest. The score includes dynamic markings such as *pp* (pianissimo) and *p* (piano), and articulation markings like *arco* (arco). The piece is marked with a box containing the number 60 and another box containing the number 70. The score concludes with a double bar line and a fermata.

[B] POCO RUBATO
SUBITO ALLEGRO $\text{♩} = 120$

2) SUBITO ALLEGRO $\text{♩} = 120$

Handwritten musical score for a piano piece. The score is written on three staves. The top staff is in bass clef with a key signature of one flat (B-flat). It contains four measures of music with various notes and rests. The middle staff shows dynamics: f , ff , mf , and fff , with crescendo and decrescendo hairpins. Below the middle staff are boxed numbers: 80, 90, 100, and 1, along with a 'C' in a box. The bottom staff is in bass clef and contains four measures of music, including a triplet of eighth notes in the second measure. The tempo is marked "SUBITO ALLEGRO" with a quarter note equal to 120.

Handwritten musical notation on a five-line staff. The notation includes a treble clef, a 3/2 time signature, and a key signature of one sharp (F#). The notes are: a half note G4 (labeled '1'), a half note A4 (labeled '8'), a half note B4 (labeled '110'), a half note C5 (labeled '120'), and a half note D5 (labeled '7'). The staff is divided into measures by vertical bar lines. The first measure contains the first two notes, the second measure contains the third, the third measure contains the fourth, and the fourth measure contains the fifth. The notation is written in black ink on a white background.

[illegible]

Handwritten musical score for a piano piece. The score is written on a single staff with a treble clef. The key signature is one flat (B-flat). The tempo is marked "Allegretto". The score begins with a "MAN" (Mancuso) marking, followed by a series of notes and rests. A box containing the number "170" is placed above the staff. The score ends with a double bar line.

[illegible]

2

Handwritten musical score for a piece in G major, marked "RITARDANDO" and "POLO PIÙ MOSSO". The score consists of 10 staves of music, featuring various dynamics (pp, mf, mp, f, ff, p, ppp), articulation (pizz, arco), and phrasing. The tempo is marked as quarter note = 80 and quarter note = 96. The score includes measures 180 through 240, with some measures containing repeat signs and first/second endings. The piece concludes with a double bar line and a fermata.

250

pizz
p

mp

Detailed description: This block contains measures 250 through 255. Measure 250 starts with a 'pizz' (pizzicato) instruction and a dynamic of 'p'. The melody consists of eighth and quarter notes. Measure 251 continues the melody. Measure 252 has a repeat sign followed by a whole rest. Measure 253 continues the melody. Measure 254 has a dynamic change to 'mp'. Measure 255 continues the melody.

260

ARCO

p f

Detailed description: This block contains measures 260 through 265. Measure 260 starts with an 'ARCO' (arco) instruction. Measure 261 has a dynamic change from 'p' to 'f'. Measure 262 has a repeat sign. Measure 263 has a repeat sign. Measure 264 has a repeat sign. Measure 265 has a repeat sign.

270

pizz
f

ARCO

p

[H] SUBITO ALLEGRO
♩ = 120

Detailed description: This block contains measures 270 through 275. Measure 270 starts with a 'pizz' instruction and a dynamic of 'f'. Measure 271 continues the melody. Measure 272 has an 'ARCO' instruction. Measure 273 has a dynamic of 'p'. Measure 274 has a dynamic of 'f'. Measure 275 has a dynamic of 'f'.

280

pizz
f

1

Detailed description: This block contains measures 280 through 285. Measure 280 starts with a 'pizz' instruction and a dynamic of 'f'. Measure 281 has a first ending bracket. Measure 282 has a first ending bracket. Measure 283 has a first ending bracket. Measure 284 has a first ending bracket. Measure 285 has a first ending bracket.

ARCO

pizz
f

1

Detailed description: This block contains measures 286 through 291. Measure 286 starts with an 'ARCO' instruction. Measure 287 has a 'pizz' instruction and a dynamic of 'f'. Measure 288 has a first ending bracket. Measure 289 has a first ending bracket. Measure 290 has a first ending bracket. Measure 291 has a first ending bracket.

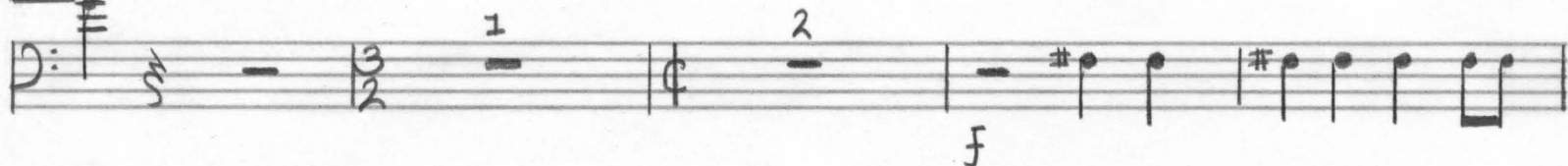
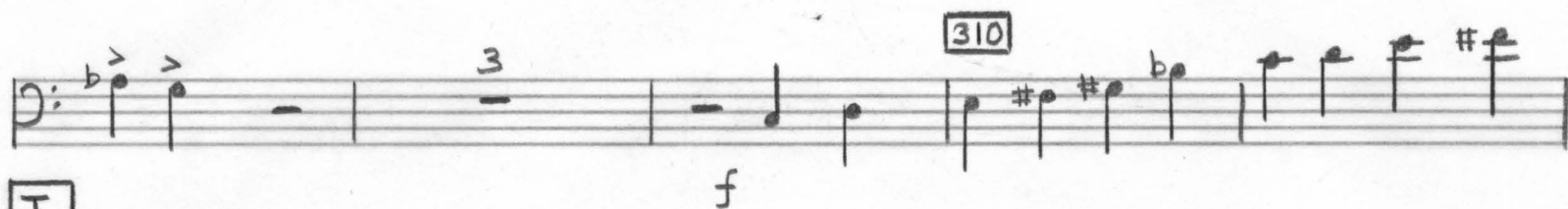
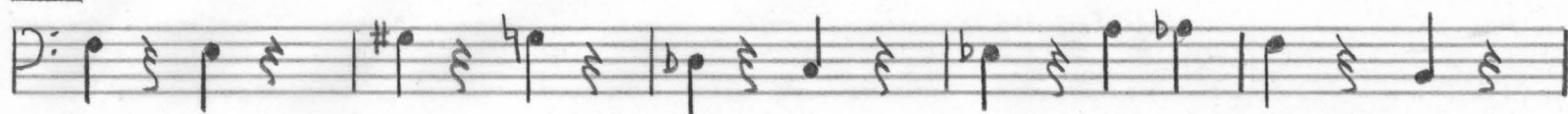
290

Detailed description: This block contains measures 292 through 297. Measure 292 continues the melody. Measure 293 continues the melody. Measure 294 continues the melody. Measure 295 continues the melody. Measure 296 continues the melody. Measure 297 continues the melody.

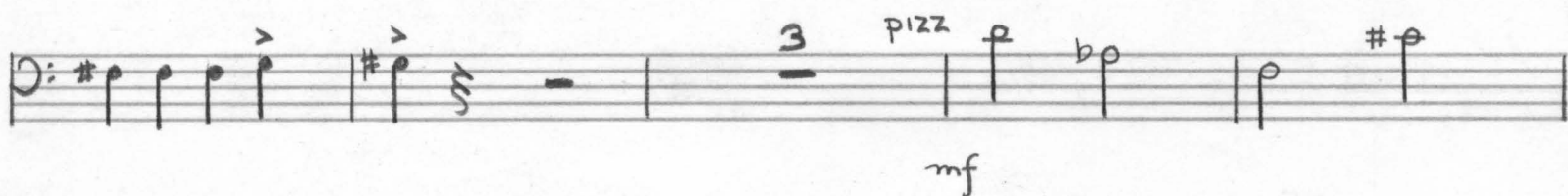
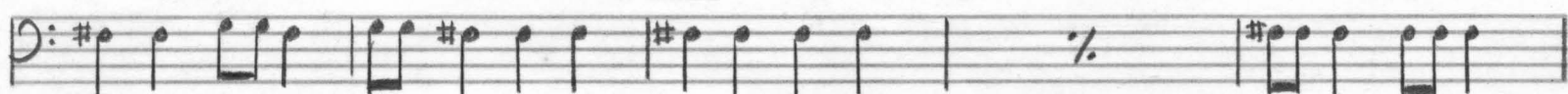
Detailed description: This block contains measures 298 through 303. Measure 298 continues the melody. Measure 299 continues the melody. Measure 300 continues the melody. Measure 301 continues the melody. Measure 302 continues the melody. Measure 303 continues the melody.

4

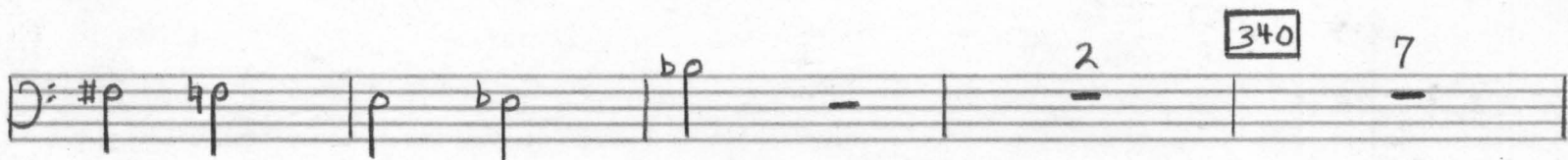
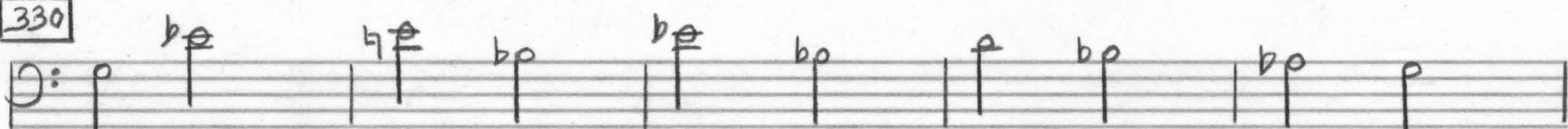
300



320



330



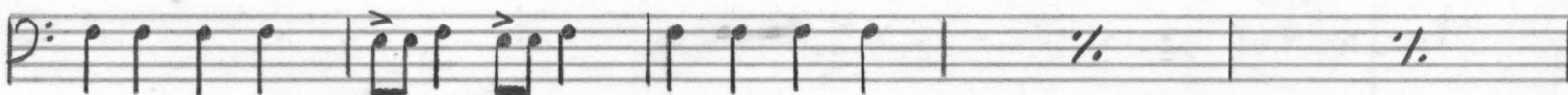
J

SUBITO $d=144$

$$d = 144$$

350

ARCO



360



ff *1* fff

CALM $\text{♩} = 66$ **II** PRAYER FOR PEACE *cello* *1* *1* **10** *4*

B *2* *2* **HARP** **C** *pizz* *p*

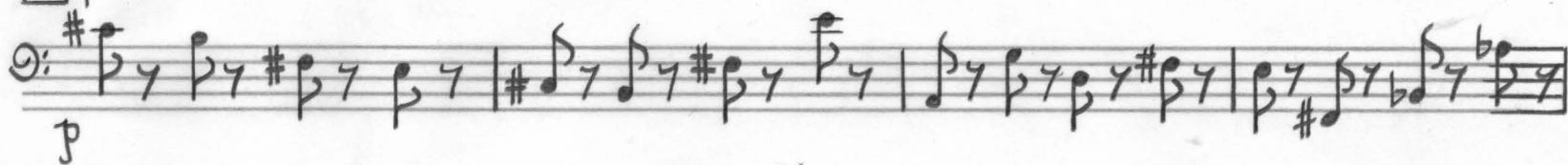
D *4*

30 *1* *3* **E** *1* *1* *1* *1* *2* **40** *cello*

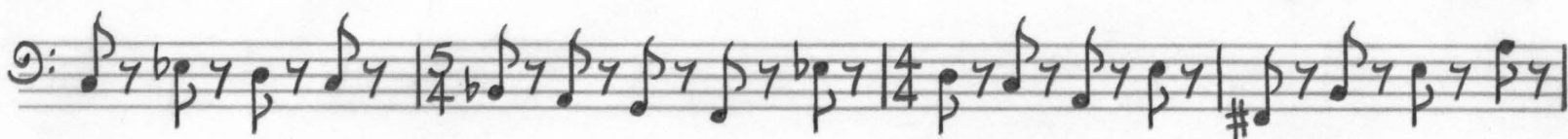
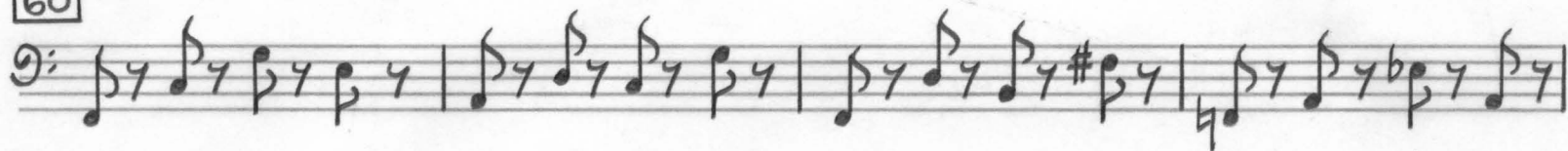
pizz *mf* **F** *più mosso* $\text{♩} = 100$ *mp*

50 *3*

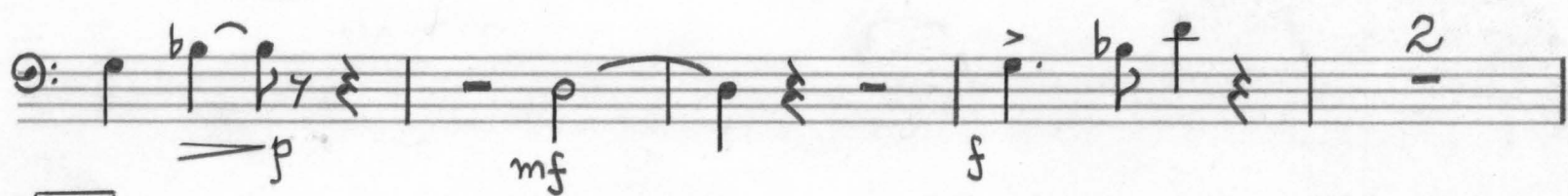
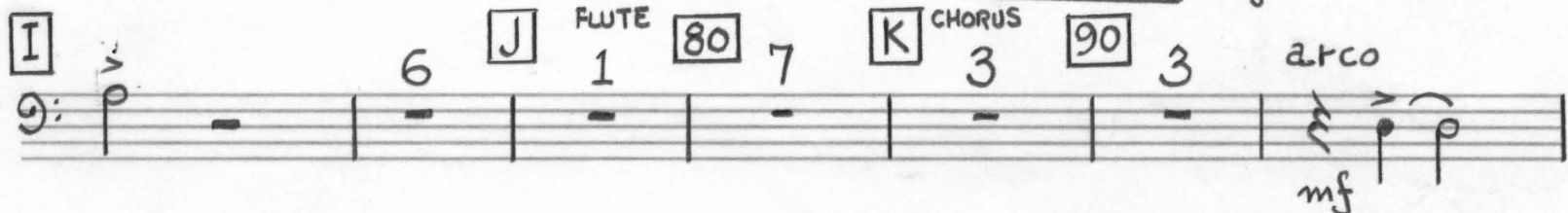
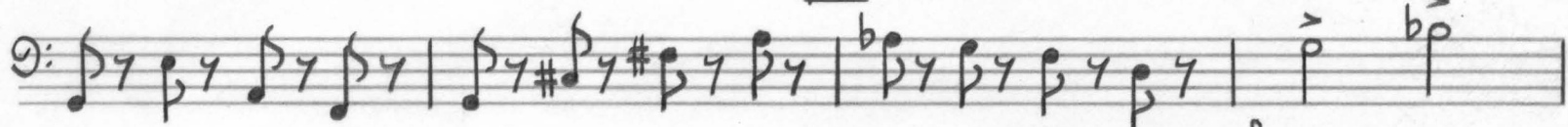
[H] pizz



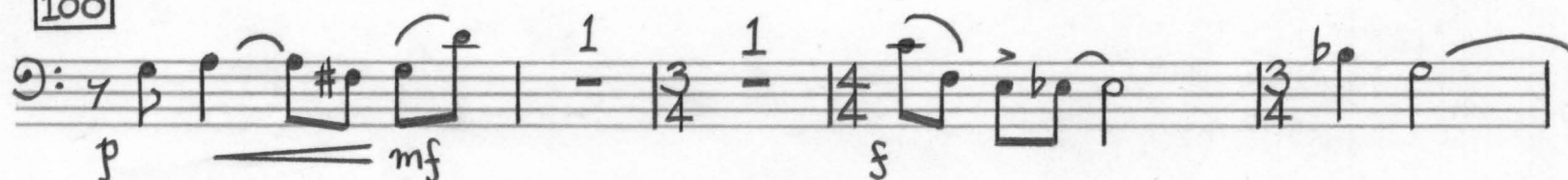
[60]



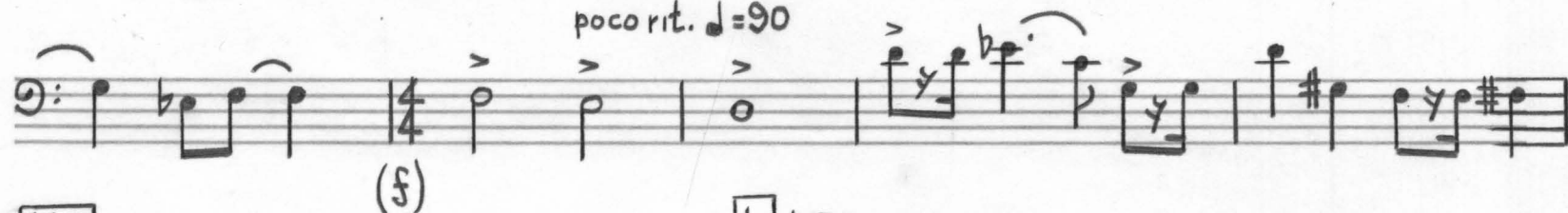
[70]



[100]

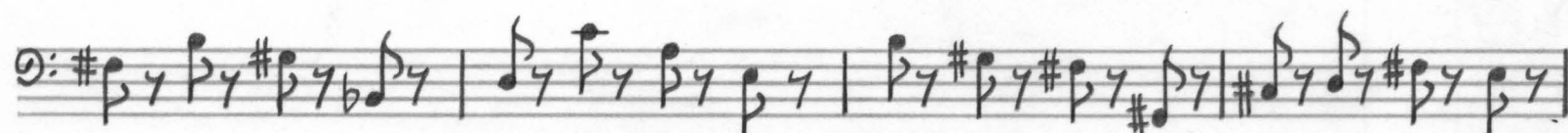
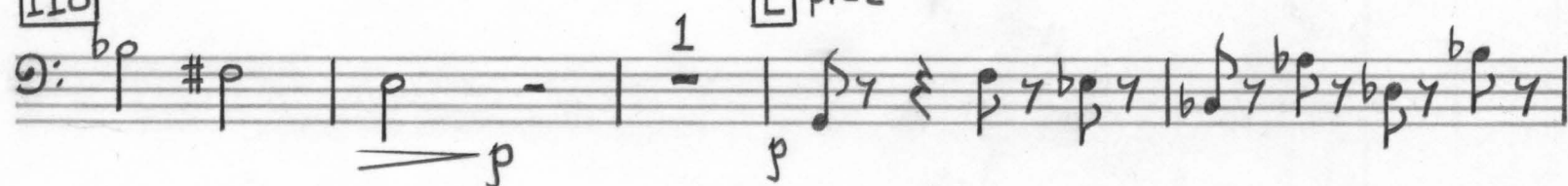


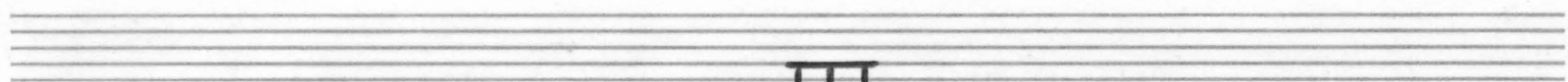
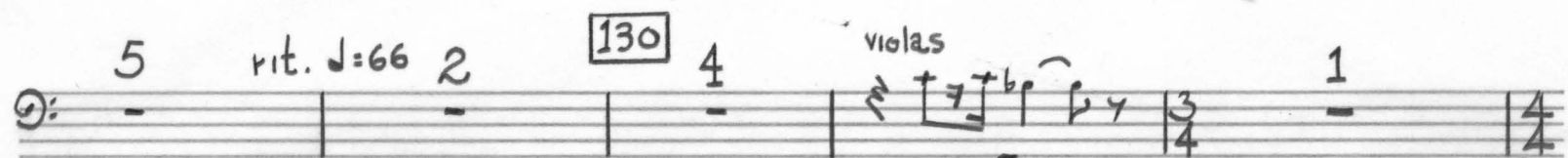
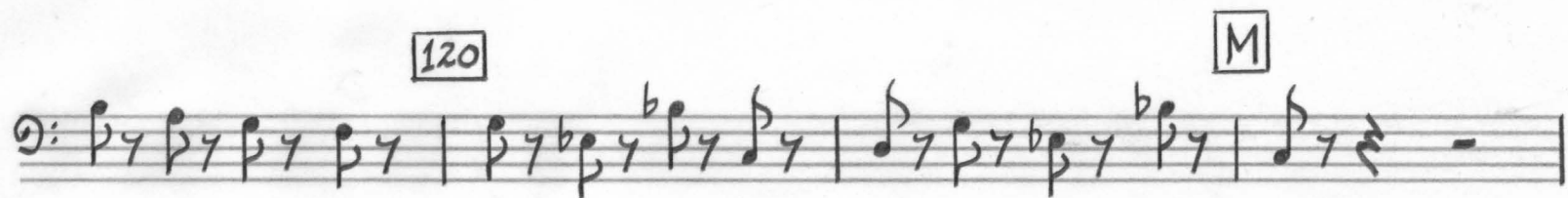
poco rit. ♩ = 90



[110]

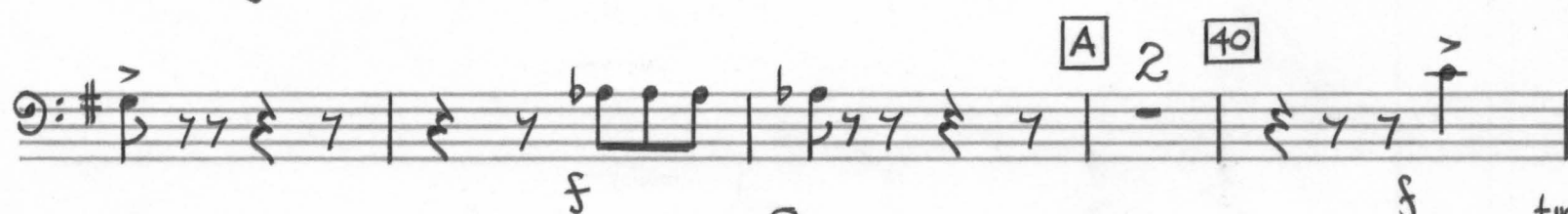
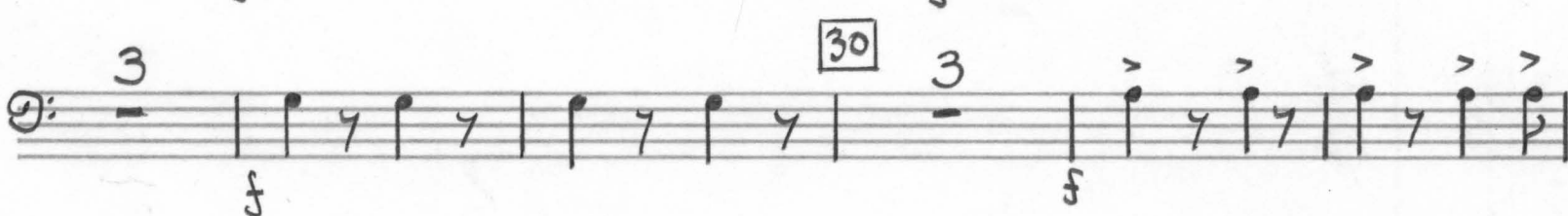
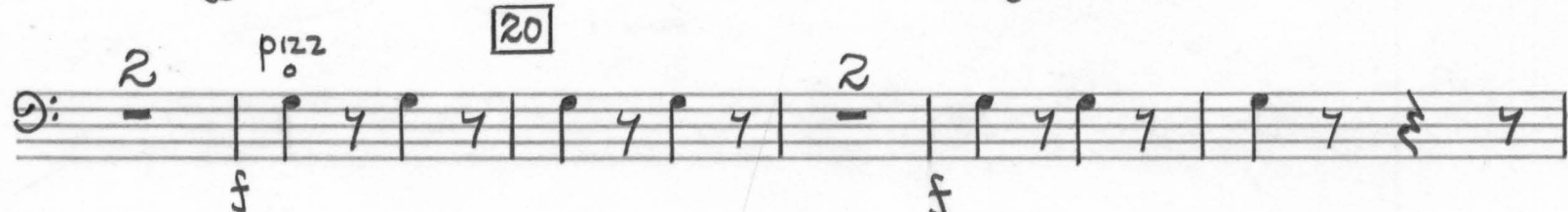
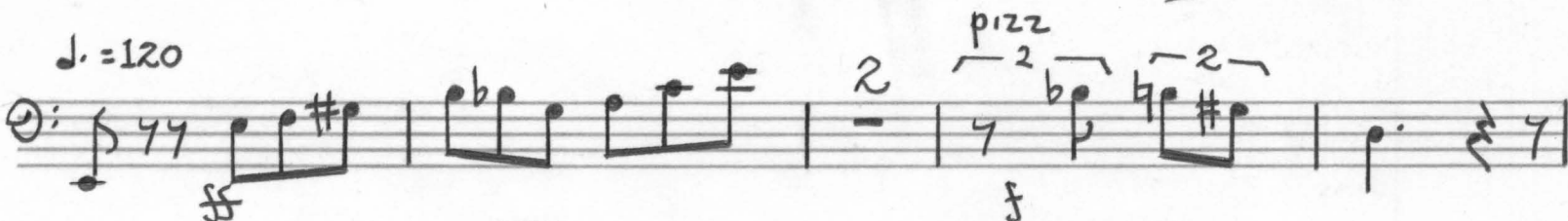
[L] pizz





Largo $\text{♩} = 60$

III
VISION



Handwritten musical score for a 10-stave piece, likely for a double bass. The score includes various musical notations such as notes, rests, and dynamic markings. It also features numbered measures in boxes (50, 60, 70, 80, 90, 100, 110, 120, 130, 140, 150, 160, 170, 180, 190) and includes lyrics starting from measure 150. Performance instructions like 'pizz.', 'arco', 'pizz. poco rit...', and 'accel...' are present.

Measures 50, 60, 70, 80, 90, 100, 110, 120, 130, 140, 150, 160, 170, 180, 190.

Lyrics: AS IN THIS HAP-PI COUN-TRY LEAV-ING OUR HO - RI - ZON MORE

Performance instructions: pizz., arco, p, f, mf, ff, fff, L'istesso tempo, poco rit., accel., mf, p.

Handwritten musical score for a single staff, featuring various musical notations, dynamics, and measure numbers.

Measures 190-200: The score begins with measure 190, marked with a box containing "200". The notation includes eighth notes, quarter notes, and rests. Dynamics include *mf* (mezzo-forte) and *f* (forte). A box containing "E" is present above the staff.

Measures 210-220: Measure 210 is marked with a box containing "210" and "pizz" (pizzicato). The notation continues with eighth and quarter notes. Measure 220 is marked with a box containing "220".

Measures 230-240: Measure 230 is marked with a box containing "230" and "pizz". Measure 240 is marked with a box containing "240" and "pizz". The notation includes eighth notes, quarter notes, and rests. Dynamics include *mf* and *f*. A box containing "F" is present above the staff.

Measures 250-260: Measure 250 is marked with a box containing "250". The notation includes eighth notes, quarter notes, and rests. Dynamics include *mf* and *f*. A box containing "2" is present above the staff.

Measures 270-280: The score concludes with measures 270 and 280. Measure 280 is marked with a box containing "2". The notation includes eighth notes, quarter notes, and rests. Dynamics include *mf*. A box containing "10." is present below the staff.

Additional markings: The score includes various musical notations such as eighth notes, quarter notes, rests, and accidentals (sharps, flats, naturals). Dynamics include *mf* (mezzo-forte), *f* (forte), and *pizz* (pizzicato). A box containing "F" is present above the staff. A box containing "2" is present above the staff. A box containing "10." is present below the staff. The word "time" is written at the bottom right.

260 *arco* *ff* *fff* 3 4

270 *fff* 2

div. 280 *pizz* *f* *mf* 1 4

290 *mf* 1

arco *ff* 2

300 *poco rit.* *pizz* *mf* *poco meno mosso* $\text{♩} = 90$ 4

310 *accel...* 1 6

$\text{♩} = 120$ *arco* *f* 1

320 *f* 3

330 1 2

Handwritten musical score on three staves. The first staff contains a melody in G major with a forte (*f*) dynamic. The second staff has a melody with a forte (*f*) dynamic, a "pizz" (pizzicato) instruction, a box containing "340", and a "2" marking. The third staff begins with a "pizz" instruction, followed by a melody with a forte (*f*) dynamic, a "3" marking, an "arco" instruction, a crescendo leading to fortissimo (*ff*), a decrescendo leading to fortississimo (*fff*), and a "div." (divisi) instruction. The piece ends with a double bar line and a "77" marking.