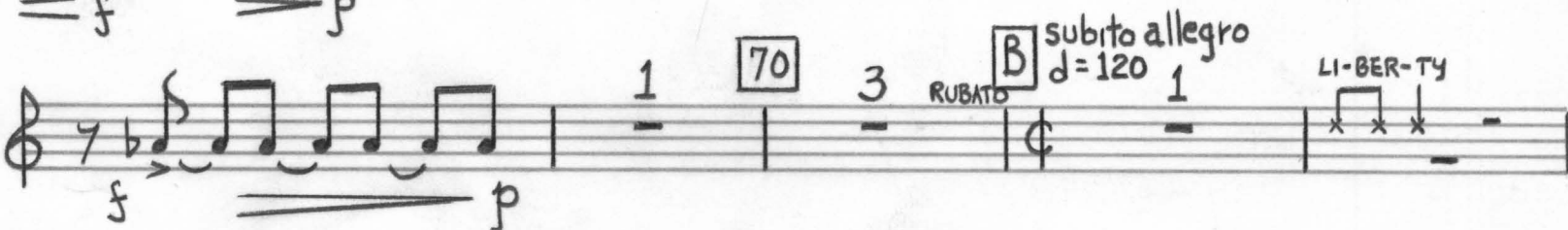
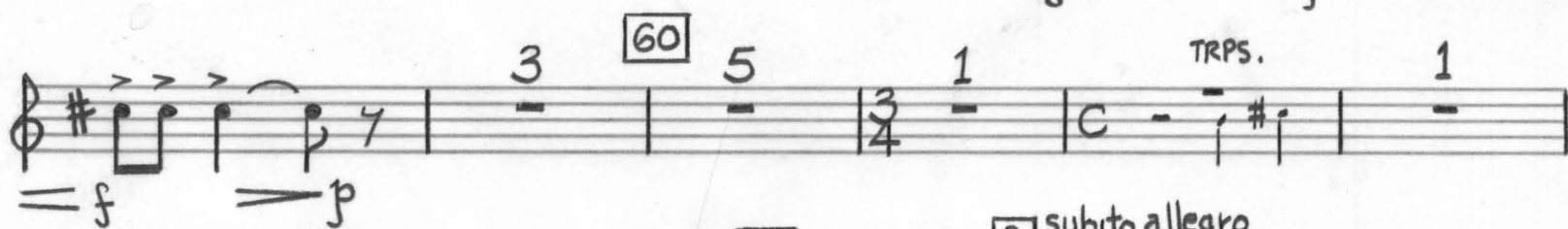
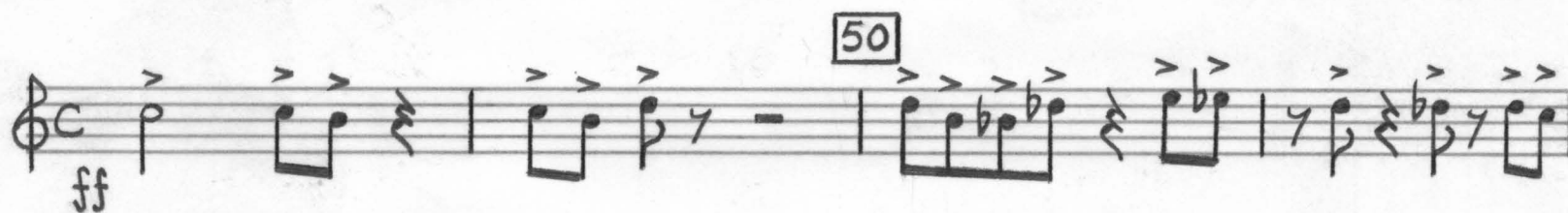
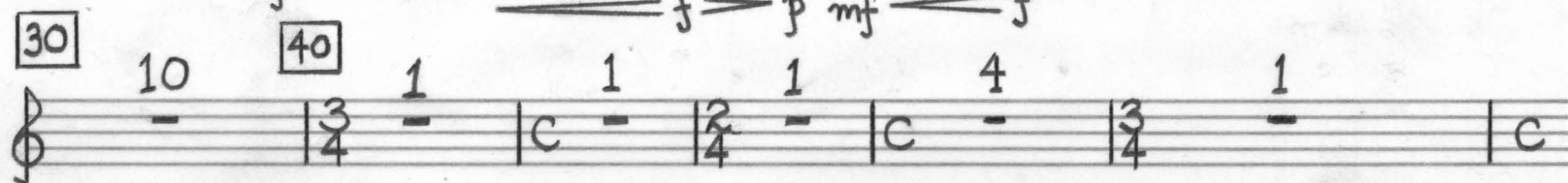
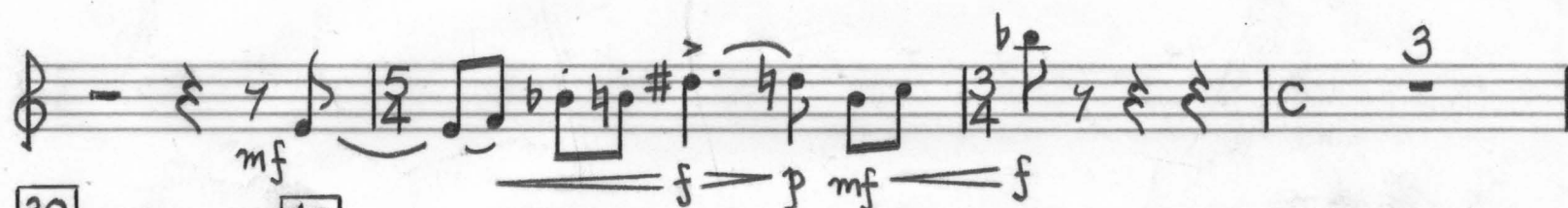
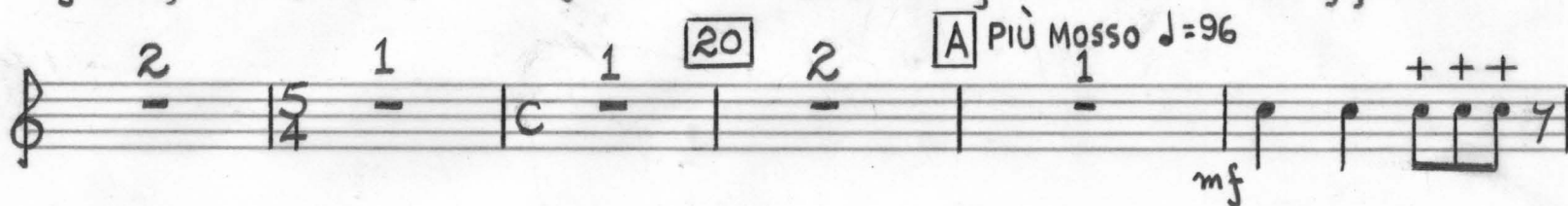
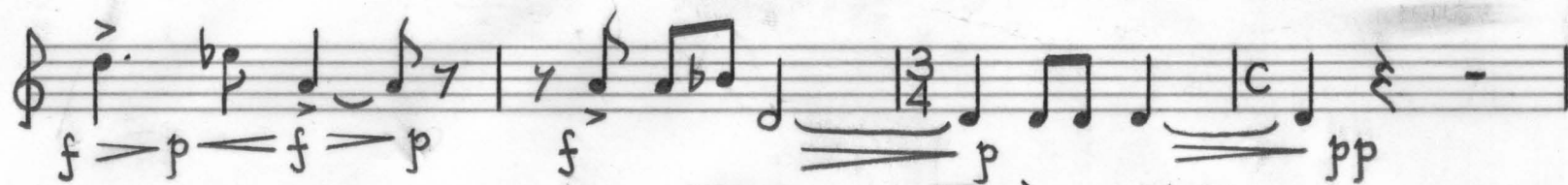
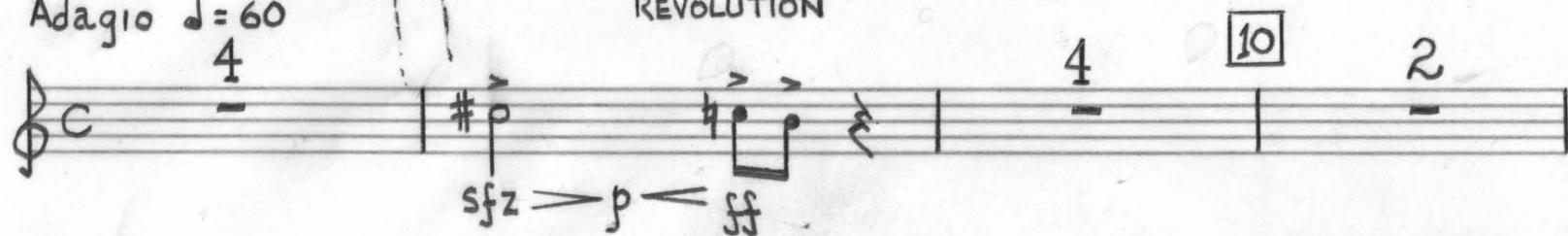


A
JEFFERSON
SYMPHONY

WALTER ROSS

F Horn 1

I
REVOLUTIONAdagio $\text{♩} = 60$ 

Handwritten musical score for "The Eyes of the World" by John Williams. The score is written on ten staves of music. It includes various musical notations such as notes, rests, and dynamic markings (f, ff, pp). There are also tempo markings like "RIT." and "d=80". The score is divided into measures, with some measures containing multiple notes and others containing rests. The key signature is one flat (B-flat). The time signature is 3/2. The score is written in a clear, legible hand.

3. 1ST HORN

LI-BER-TY

2ND

210

8 220 3 F 7 230 10 240 2

p

G POCO PIÙ MOSSO $\text{♩} = 96$

MUTED TRUMPETS

MUTE

1 3

f p f p f

OPEN 250 10 260 2 TRPS. 3 OPEN

p f

1 270 3 H $\text{♩} = 120$ subito Allegro

f

1 280 1 f f

2 p f

290 1 2 4

f f

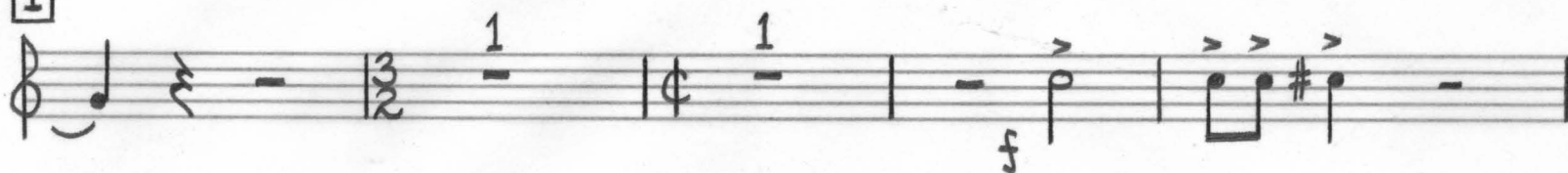
300 2 3

f f

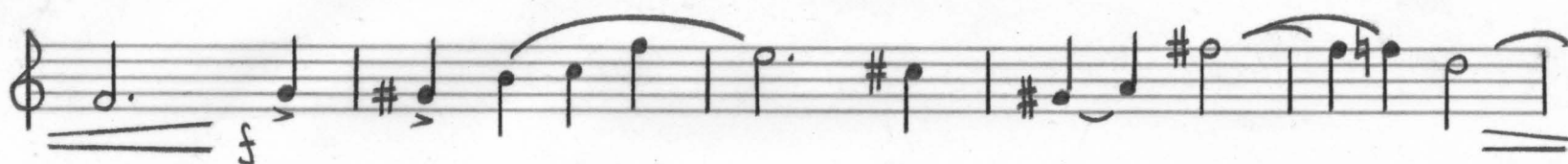
310



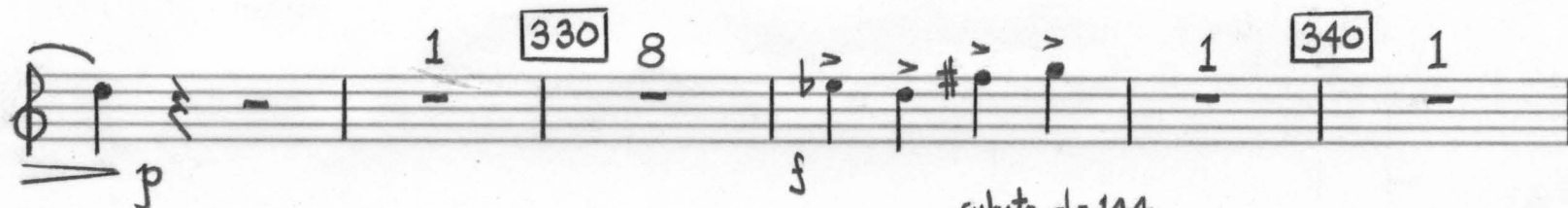
I



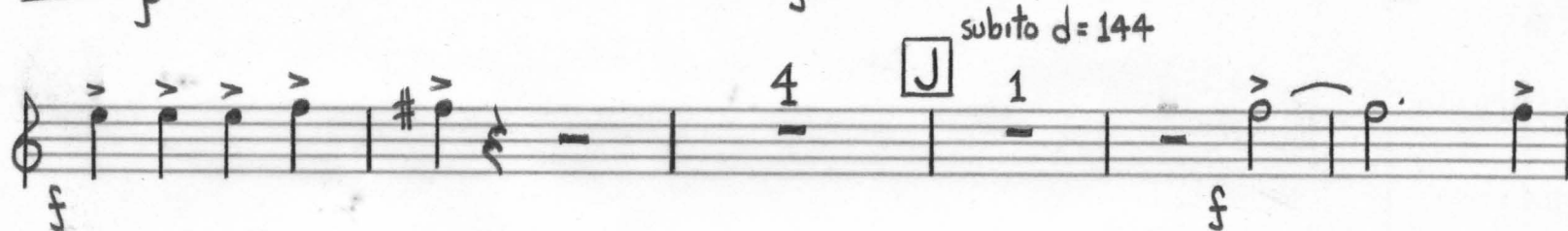
320



330



340

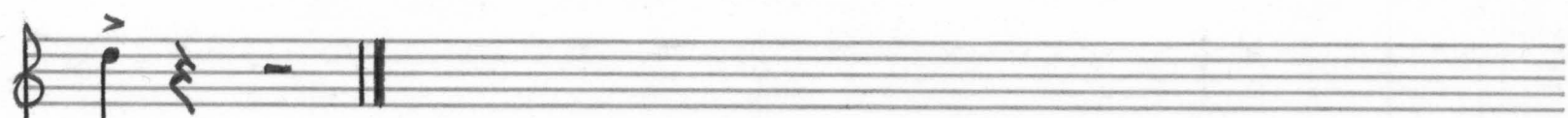


subito d=144



open

360



II PRAYER FOR PEACE

TACET

III VISION

Largo $\text{♩} = 60$

accel...

5 $\text{♩} = \text{♩}$ →

10 ... $\text{♩} = 120$

20 1

30 1

40 2 A 2 40

50 8 6

60 2 2

70 6 2

80 1 B 3 80 2

f *mf* *p* *mute*

Handwritten musical score for 1st Horn, measures 90 to 240. The score is written on a single staff with a treble clef and a 4/4 time signature. The notation includes various musical symbols such as notes, rests, accidentals, and dynamic markings.

Measures 90-100: Includes dynamic markings *f* and *open*. Measure 100 is marked with a box containing "100".

Measures 110-120: Includes a box containing "110", a tempo change *← J = J. →*, and a box containing "120".

Measures 130-170: Includes boxes containing "130", "140", "150", "160", and "170", and a tempo change *4 poco rit.*. Measure 170 is marked with a box containing "D".

Measures 180-200: Includes boxes containing "180", "190", and "200", and a tempo change *accel... J = 120*. Measure 190 is marked with a box containing "E".

Measures 210-220: Includes boxes containing "210" and "220", and a tempo change *1st TRUMPET*. Measure 210 is marked with a box containing "E".

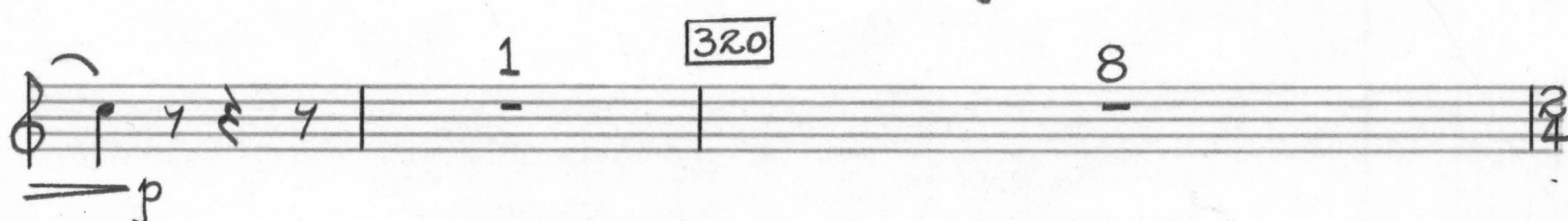
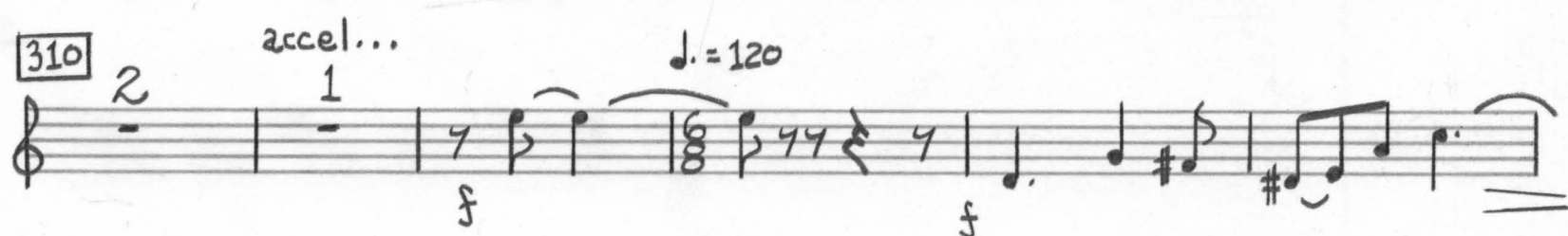
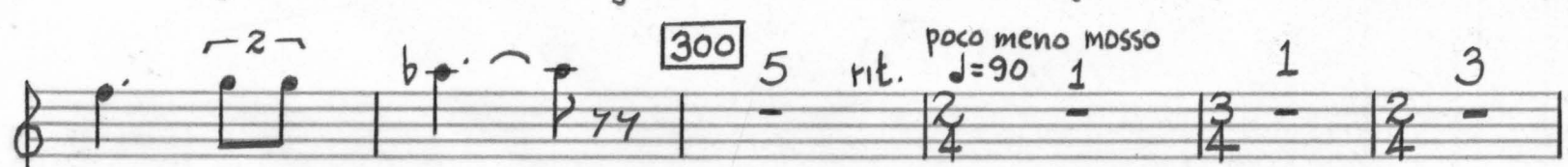
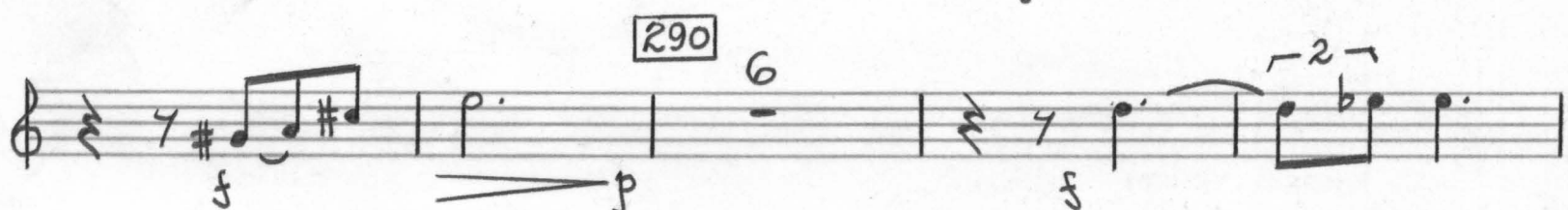
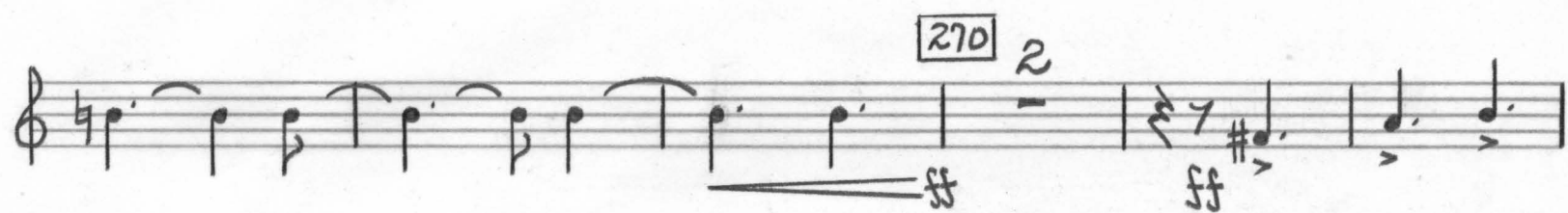
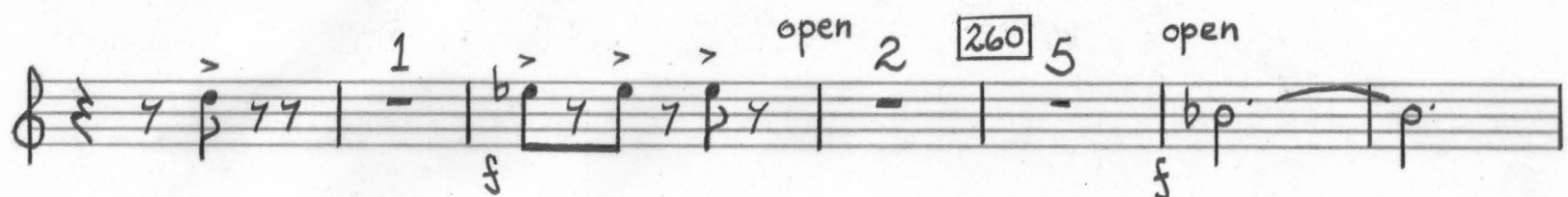
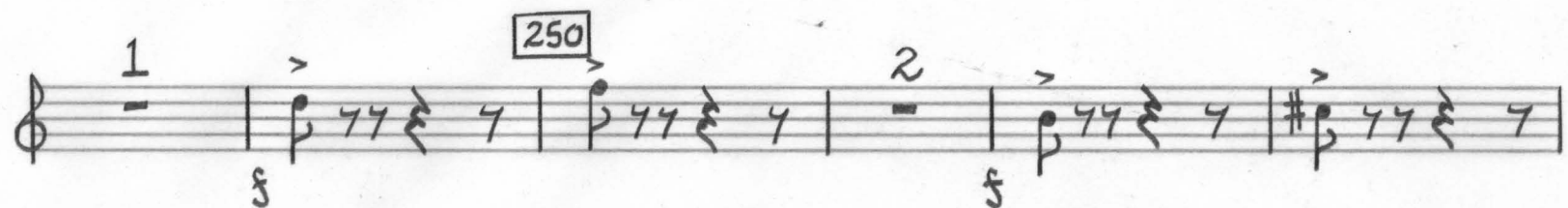
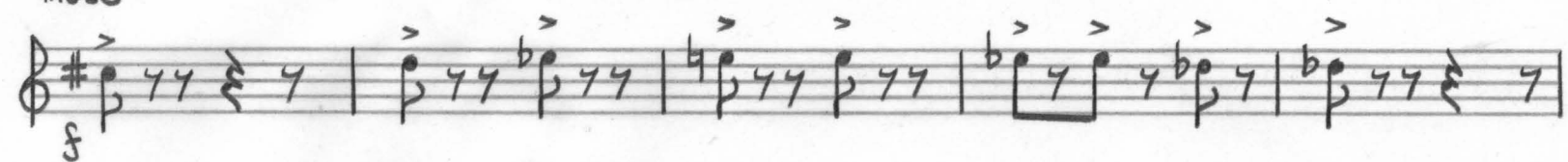
Measures 230-240: Includes boxes containing "230" and "240", and a tempo change *mute*. Measure 230 is marked with a box containing "F".

Dynamic markings include *f*, *open*, *p*, *pp*, *mf*, and *mute*.

7.

1st Horn

mote



Handwritten musical score for a 2/4 piece, measures 330-340. The score is written on five staves. The first staff starts with a treble clef and a 2/4 time signature. The key signature has one sharp (F#). The first staff contains measures 330-333. The second staff contains measures 334-337. The third staff contains measures 338-340. The fourth staff contains measures 341-344. The fifth staff contains measures 345-348. The score includes various musical notations such as notes, rests, accidentals, and dynamic markings (f, ff, fff).
