

A
JEFFERSON
SYMPHONY

WALTER ROSS

F Horn 2

I REVOLUTION

4

11

10

40

muted trps.

50

3

60

70

80

90

[C]

2

1

100

110

120

130

140

150

160

170

ALL EYES ARE

180

rit. $\text{d} = 80$

190

200

210

220

F

LI-BER-TY

[D]

[E]

[F]

[G]

[H]

[I]

[J]

[K]

[L]

[M]

[N]

[O]

[P]

[Q]

[R]

[S]

[T]

[U]

[V]

[W]

[X]

[Y]

[Z]

[AA]

[AB]

[AC]

[AD]

[AE]

[AF]

[AG]

[AH]

[AI]

[AJ]

[AK]

[AL]

[AM]

[AN]

[AO]

[AP]

[AQ]

[AR]

[AS]

[AT]

[AU]

[AV]

[AW]

[AX]

[AY]

[AZ]

[BA]

[BB]

[BC]

[BD]

[BE]

[BF]

[BG]

[BH]

[BI]

[BJ]

[BK]

[BL]

[BM]

[BN]

[BO]

[BP]

[BQ]

[BR]

[BS]

[BT]

[BU]

[BV]

[BW]

[BX]

[BY]

[BZ]

[CA]

[CB]

[CC]

[CD]

[CE]

[CF]

[CG]

[CH]

[CI]

[CJ]

[CK]

[CL]

[CM]

[CN]

[CO]

[CP]

[CQ]

[CR]

[CS]

[CT]

[CU]

[CV]

[CW]

[CX]

[CY]

[CZ]

[DA]

[DB]

[DC]

[DD]

[DE]

[DF]

[DG]

[DH]

[DI]

[DJ]

[DK]

[DL]

[DM]

[DN]

[DO]

[DP]

[DQ]

[DR]

[DS]

[DT]

[DU]

[DV]

[DW]

[DX]

[DY]

[DZ]

[EA]

[EB]

[EC]

[ED]

[EE]

[EF]

[EG]

[EH]

[EI]

[EJ]

[EK]

[EL]

[EM]

[EN]

[EO]

[EP]

[EQ]

[ER]

[ES]

[ET]

[EU]

[EV]

[EW]

[EX]

[EY]

[EZ]

[FA]

[FB]

[FC]

[FD]

[FE]

[FF]

[FG]

[FH]

[FI]

[FJ]

[FK]

[FL]

[FM]

[FN]

[FO]

[FP]

[FQ]

[FR]

[FS]

[FT]

[FU]

[FV]

[FW]

[FX]

[FY]

[FZ]

[GA]

[GB]

[GC]

[GD]

[GE]

[GF]

[GG]

[GH]

[GI]

[GJ]

[GK]

[GL]

[GM]

[GN]

[GO]

[GP]

[GQ]

[GR]

[GS]

[GT]

[GU]

[GV]

[GW]

[GX]

[GY]

[GZ]

[HA]

[HB]

[HC]

[HD]

[HE]

[HF]

[HG]

[HH]

[HI]

[HJ]

[HK]

[HL]

[HM]

[HN]

[HO]

[HP]

[HQ]

[HR]

[HS]

[HT]

[HU]

[HV]

[HW]

[HX]

[HY]

[HZ]

[IA]

[IB]

[IC]

[ID]

[IE]

[IF]

[IG]

[IH]

[II]

[IJ]

[IK]

[IL]

[IM]

[IN]

[IO]

[IP]

[IQ]

[IR]

[IS]

[IT]

[IU]

[IV]

[IW]

[IX]

[IY]

[IZ]

[JA]

[JB]

[JC]

[JD]

[JE]

[JF]

[JG]

[JH]

[JI]

[JJ]

[JK]

[JL]

[JM]

[JN]

[JO]

[JP]

[JQ]

[JR]

[JS]

[JT]

[JU]

[JV]

[JW]

[JX]

[JY]

[JZ]

[KA]

[KB]

[KC]

[KD]

[KE]

[KF]

[KG]

[KH]

[KI]

[KJ]

[KK]

[KL]

[KM]

[KN]

[KO]

[KP]

[KQ]

[KR]

[KS]

[KT]

[KU]

[KV]

[KW]

[KX]

[KY]

[KZ]

[LA]

[LB]

[LC]

[LD]

[LE]

[LF]

[LG]

[LH]

[LI]

[LJ]

[LK]

[LL]

[LM]

[LN]

[LO]

[LP]

[LQ]

[LR]

[LS]

[LT]

[LU]

[LV]

[LW]

[LX]

[LY]

[LZ]

[MA]

[MB]

[MC]

[MD]

[ME]

[MF]

[MG]

[MH]

[MI]

[MJ]

[MK]

[ML]

[MN]

[MO]

[MP]

[MQ]

[MR]

[MS]

[MT]

[MU]

[MV]

[MW]

[MX]

[MY]

[MZ]

[NA]

[NB]

[NC]

[ND]

[NE]

[NF]

[NG]

[NH]

[NI]

[NJ]

[NK]

[NL]

[NM]

[NN]

[NO]

[NP]

[NQ]

[NR]

[NS]

[NT]

[NU]

[NV]

[NW]

[NX]

[NY]

[NZ]

[OA]

[OB]

[OC]

[OD]

[OE]

[OF]

[OG]

[OH]

[OI]

[OJ]

[OK]

[OL]

[OM]

[ON]

[OO]

[OP]

[OQ]

[OR]

[OS]

[OT]

[OU]

[OV]

[OW]

[OX]

[OY]

[OZ]

[PA]

[PB]

[PC]

[PD]

[PE]

[PF]

[PG]

[PH]

[PI]

[PJ]

[PK]

[PL]

[PM]

[PN]

[PO]

[PP]

[PQ]

[PR]

[PS]

[PT]

[PU]

[PV]

[PW]

[PX]

[PY]

[PZ]

[QA]

[QB]

[QC]

[QD]

[QE]

[QF]

[QG]

[QH]

[QI]

[QJ]

[QK]

[QL]

[QM]

[QN]

[QO]

[QP]

[QQ]

[QR]

[QS]

[QT]

[QU]

[QV]

[QW]

[QX]

[QY]

[QZ]

[RA]

[RB]

[RC]

[RD]

[RE]

[RF]

[RG]

[RH]

[RI]

[RJ]

[RK]

[RL]

[RM]

[RN]

[RO]

[RP]

[RQ]

[RR]

[RS]

[RT]

[RU]

[RV]

[RW]

[RX]

[RY]

[RZ]

[SA]

[SB]

[SC]

[SD]

[SE]

[SF]

[SG]

[SH]

[SI]

[SJ]

[SK]

[SL]

[SM]

[SN]

[SO]

[SP]

[SQ]

[SR]

[SS]

[ST]

[SU]

[SV]

[SW]

[SX]

[SY]

[SZ]

[TA]

[TB]

[TC]

[TD]

[TE]

[TF]

[TG]

[TH]

[TI]

[TJ]

[TK]

[TL]

[TM]

[TN]

[TO]

[TP]

[TQ]

[TR]

[TS]

[TT]

[TU]

[TV]

[TW]

[TX]

[TY]

[TZ]

[UA]

[UB]

[UC]

[UD]

[UE]

[UF]

[UG]

[UH]

[UI]

[UJ]

[UK]

[UL]

[UM]

[UN]

[UO]

[UP]

[UQ]

[UR]

[US]

[UT]

[UU]

[UV]

[UW]

[UX]

[UY]

[UZ]

[VA]

[VB]

[VC]

[VD]

[VE]

[VF]

[VG]

[VH]

[VI]

[VJ]

[VK]

[VL]

[VM]

[VN]

[VO]

[VP]

[VQ]

[VR]

[VS]

[VT]

[VU]

[VV]

[VW]

[VX]

[VY]

[VZ]

[WA]

[WB]

[WC]

[WD]

[WE]

[WF]

[WG]

[WH]

[WI]

[WJ]

[WK]

[WL]

[WM]

[WN]

[WO]

[WP]

[WQ]

[WR]

[WS]

[WT]

[WU]

[WV]

[WW]

[WX]

[WY]

[WZ]

[XA]

[XB]

[XC]

[XD]

[XE]

[XF]

[XG]

[XH]

[XI]

[XJ]

[XK]

[XL]

[XM]

[XN]

[XO]

[XP]

[XQ]

[XR]

[XS]

[XT]

[XU]

[XV]

[XW]

[XX]

[XY]

[XZ]

[YA]

[YB]

[YC]

[YD]

[YE]

[YF]

[YG]

[YH]

[YI]

[YJ]

[YK]

[YL]

[YM]

[YN]

[YO]

[YP]

[YQ]

[YR]

[YS]

[YT]

[YU]

[YV]

[YW]

[YX]

[YY]

[YZ]

[ZA]

[ZB]

[ZC]

[ZD]

[ZE]

[ZF]

[ZG]

[ZH]

[ZI]

[ZJ]

[ZK]

[ZL]

[ZM]

[ZN]

[ZO]

[ZP]

[ZQ]

[ZR]

[ZS]

[ZT]

[ZU]

[ZV]

[ZW]

[ZX]

[ZY]

[ZZ]

3.

Handwritten musical score for a brass instrument, likely a trumpet, spanning measures 230 to 320. The score includes various musical notations such as notes, rests, dynamics (f, p), and articulations (accents, slurs). Key markings include "poco più mosso" at measure 230, "muted trps." at measure 235, "mute" at measure 240, and "open" at measure 250. Measure numbers 230, 240, 250, 260, 270, 280, 290, 300, 310, and 320 are boxed. A key signature change to one sharp (F#) occurs between measures 270 and 280. A tempo change to "subito allegro" with a new tempo marking "d=120" is indicated at measure 270. The score concludes with a first ending bracket labeled "I" spanning measures 310 to 320.

Handwritten musical score for Horn 2, measures 330-360. The score is written on a single staff with a treble clef. The key signature is one flat (B-flat). The time signature is 4/4. The score includes various musical notations such as notes, rests, dynamics (p, f, ff), articulation (accents, slurs), and fingerings (1, 8, 4, 5). Measure numbers 330, 340, 350, and 360 are boxed. A tempo change is indicated by a 'J' symbol and 'subito d=144' at measure 340. The word 'mute' is written above measure 350, and 'open' is written above measure 360. The score ends with a double bar line at measure 360.

II

PRAYER FOR PEACE

TACET

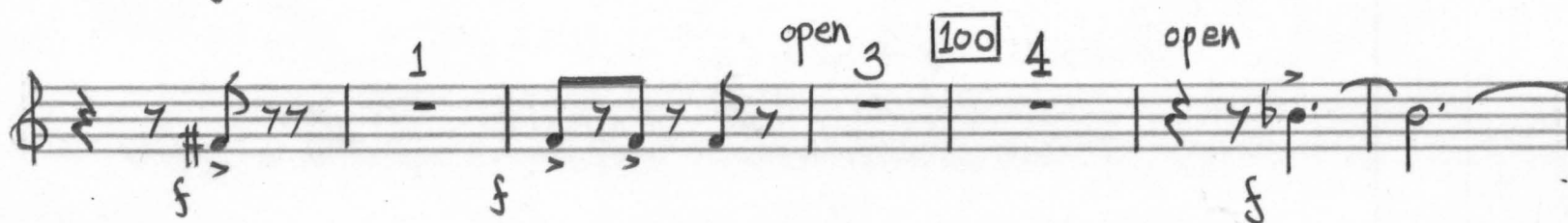
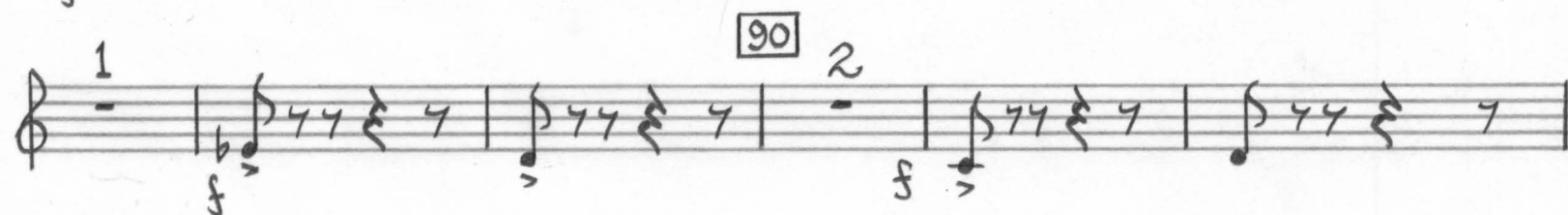
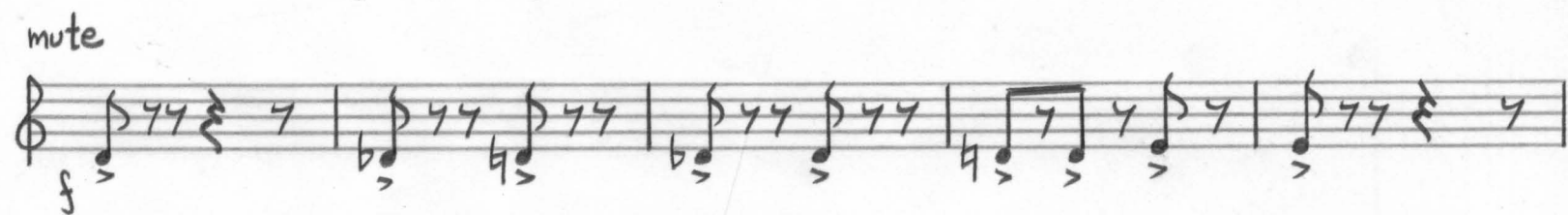
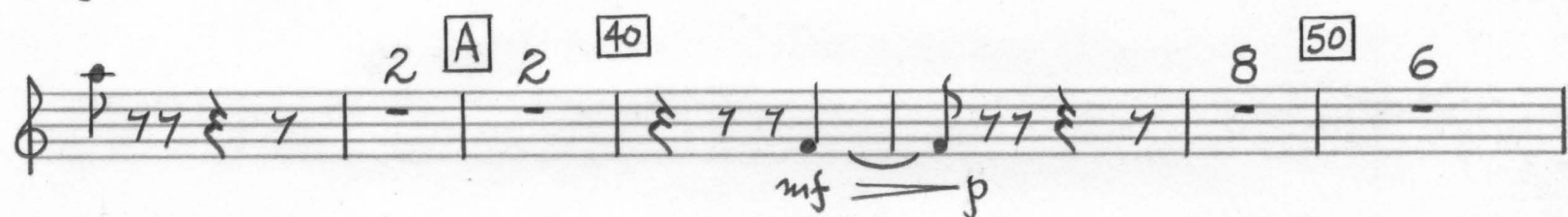
5.
2ND HN.

III
VISION

Largo $\text{♩} = 60$

accel...

$\text{♩} = 120$



110

C L'ISTESSO TEMPO
← J. = J. →

7 120 10 130 10 140 10 150 10

160 10 170 4 poco rit... **D** strings J. = 100 6 180 10 190 3 accel... J. = 120 4 Fl. os.

1ST TRUMPET

200 5 **E** 5 210 1ST TRUMPET 6

220 1 5

230 2 2

F mute 1 240 3

mute

250 1 2

open 2 260 5

7.

NO. D 2 - 10 STAVE