

A
JEFFERSON
SYMPHONY

WALTER ROSS

Flute 1

3 1 BSSN. I II 1

50

60

pp

70

f

POCO RUBATO [B] SUBITO ALLEGRO $\text{♩} = 120$ 80 F HORN I

7

f

90 1 1 [C] VN. I 1

100 1

Handwritten musical score for a 10-staff instrument, likely a tuba or euphonium. The score includes various musical notations such as notes, rests, dynamics (*f*, *mp*, *pp*, *ff*), articulation (accents, slurs), and performance instructions (*RITARDANDO*, tempo markings). Measure numbers 110 through 210 are boxed and placed above the staves. The key signature has one flat (B-flat), and the time signature is 3/2. The score ends with a double bar line and a final measure marked with a '2'.

Measure numbers: 110, 120, 130, 140, 150, 160, 170, 180, 190, 200, 210.

Performance instructions: *RITARDANDO* ... $\text{♩} = 80$, *SO PRANO ALTO*, *MAN*, *trm*, *B^b TRP II*.

Dynamics: *f*, *mp*, *pp*, *ff*.

Articulation: accents, slurs, *trm* (trill), *pp* (pianissimo), *ff* (fortissimo).

220 F 230 10

pp

240 G POCA PIÙ MOSSO $\text{♩} = 96$ B.C.L. 2 1

8va

250 mf pp

3 3 4 3 3

pp

260 3 3

5

f

270 H SUBITO ALLEGRO $\text{♩} = 120$ 3 1

ff

2

280 9 TUBA II

290 3

f

8va

Handwritten musical score for a single staff, measures 297-344. The score includes various musical notations such as notes, rests, accidentals, and dynamic markings. It also contains performance instructions like "SOFRANO ALTO", "EYES", and "SUBITO".

Measures 297-300: Treble clef, key signature of one flat. Measure 297 has a first ending bracket. Measure 298 has a forte (*f*) dynamic. Measure 299 has a first ending bracket. Measure 300 has a first ending bracket.

Measures 301-304: Treble clef, key signature of one flat. Measure 301 has a triplet of eighth notes. Measure 302 has a triplet of eighth notes. Measure 303 has a triplet of eighth notes. Measure 304 has a triplet of eighth notes.

Measures 305-308: Treble clef, key signature of one flat. Measure 305 has a triplet of eighth notes. Measure 306 has a triplet of eighth notes. Measure 307 has a triplet of eighth notes. Measure 308 has a triplet of eighth notes.

Measures 309-312: Treble clef, key signature of one flat. Measure 309 has a triplet of eighth notes. Measure 310 has a triplet of eighth notes. Measure 311 has a triplet of eighth notes. Measure 312 has a triplet of eighth notes.

Measures 313-316: Treble clef, key signature of one flat. Measure 313 has a triplet of eighth notes. Measure 314 has a triplet of eighth notes. Measure 315 has a triplet of eighth notes. Measure 316 has a triplet of eighth notes.

Measures 317-320: Treble clef, key signature of one flat. Measure 317 has a triplet of eighth notes. Measure 318 has a triplet of eighth notes. Measure 319 has a triplet of eighth notes. Measure 320 has a triplet of eighth notes.

Measures 321-324: Treble clef, key signature of one flat. Measure 321 has a triplet of eighth notes. Measure 322 has a triplet of eighth notes. Measure 323 has a triplet of eighth notes. Measure 324 has a triplet of eighth notes.

Measures 325-328: Treble clef, key signature of one flat. Measure 325 has a triplet of eighth notes. Measure 326 has a triplet of eighth notes. Measure 327 has a triplet of eighth notes. Measure 328 has a triplet of eighth notes.

Measures 329-332: Treble clef, key signature of one flat. Measure 329 has a triplet of eighth notes. Measure 330 has a triplet of eighth notes. Measure 331 has a triplet of eighth notes. Measure 332 has a triplet of eighth notes.

Measures 333-336: Treble clef, key signature of one flat. Measure 333 has a triplet of eighth notes. Measure 334 has a triplet of eighth notes. Measure 335 has a triplet of eighth notes. Measure 336 has a triplet of eighth notes.

Measures 337-340: Treble clef, key signature of one flat. Measure 337 has a triplet of eighth notes. Measure 338 has a triplet of eighth notes. Measure 339 has a triplet of eighth notes. Measure 340 has a triplet of eighth notes.

Measures 341-344: Treble clef, key signature of one flat. Measure 341 has a triplet of eighth notes. Measure 342 has a triplet of eighth notes. Measure 343 has a triplet of eighth notes. Measure 344 has a triplet of eighth notes.

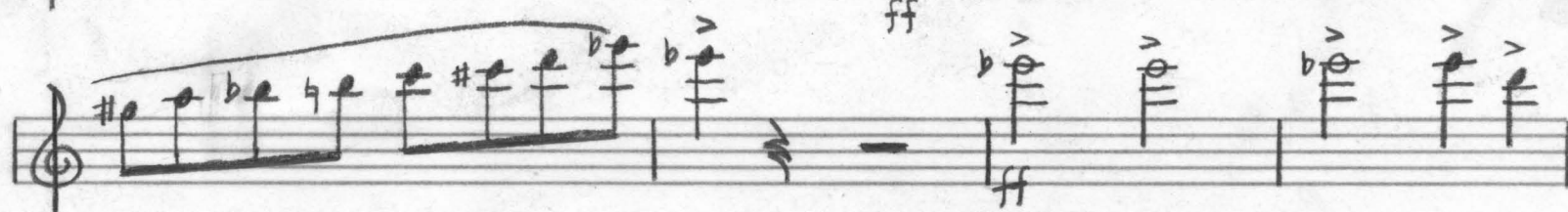
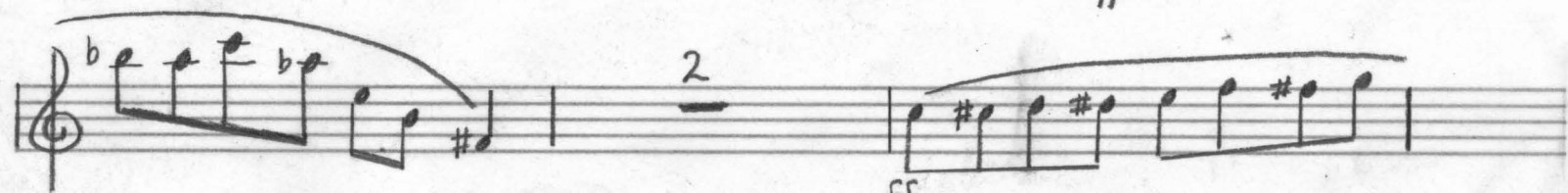
Performance instructions:

- SOFRANO ALTO
- EYES
- SUBITO $\text{♩} = 144$

350



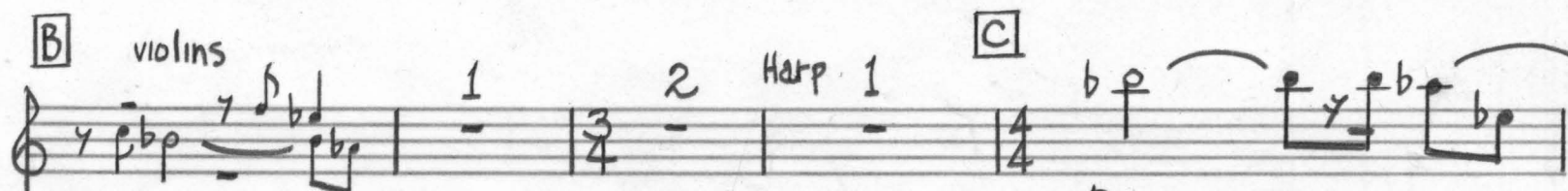
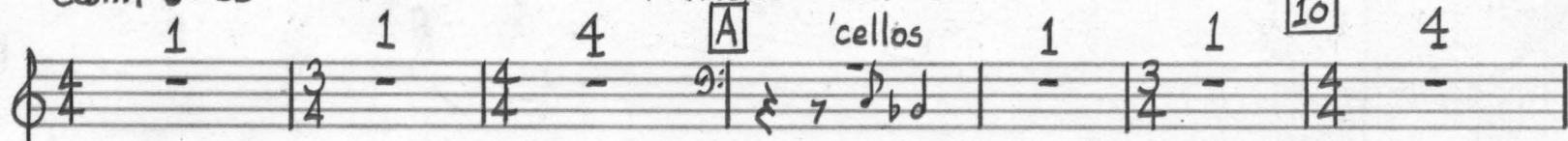
360



II

calm $\text{♩} = 66$

PRAYER FOR PEACE



pp

30 1 4 E violas 1 1 1 1 2

40 4 F più mosso $\text{♩} = 100$ 6 G 50 6 H cellos basses 4 60 5 1 1

70 2 I violin I 6 J 80 pp mf

p mf p mf

K 90 2 10

100 2 1 1 2 1 poco rit... $\text{♩} = 90$ 3 110 4 L 7

120 2 Harp M 5 rit. $\text{♩} = 66$ mp

130

pp

III
VISIONLargo $\text{♩} = 60$

Handwritten musical score for Flute, titled "VISION". The score is written on ten staves. The first staff is in 2/4 time, marked "Largo" with a tempo of $\text{♩} = 60$. The second staff is in 6/8 time, marked "accl" with a tempo of $\text{♩} = 120$. The score includes various musical notations such as notes, rests, accidentals, and dynamic markings (*f*, *p*, *mf*). Rehearsal marks are indicated by boxed numbers: 10, 20, 30, 50, and 60. A section labeled "A" is marked with a boxed "A". The score concludes with a final staff marked with a boxed "7".

KING BRAND
1895 B'WAY, N. Y.

1

150 10

mf

160 3 *p*

170 4 *poco rit...* $\text{♩} = 100$ 6

180 10 190 2 *accele...* $\text{♩} = 120$ 3

200 1 3 3 *f* — *p* *mf* *E* 1

210

5 *mf* 220

1

230

2 2 1 3

[F]

240

250

260

280

270

290

Flute score, measures 300-340. The score is written on a single staff with a treble clef and a key signature of one sharp (F#). The time signature is 4/4. The music features various dynamics, articulations, and performance instructions.

Measures 300-310: *poco rit*, *poco meno* (♩ = 90). Dynamics: *mf*, *pp*. Measure numbers: 300, 310.

Measures 310-320: *accel...*, *pp*, *f*. Tempo: ♩ = 120. Measure numbers: 320.

Measures 320-330: *f*, *pp*, *f*. Measure numbers: 330.

Measures 330-340: *f*, *pp*, *f*. Measure numbers: 340.

Measures 340-350: *f*, *pp*, *f*. Measure numbers: 350.

Measures 350-360: *f*, *pp*, *f*. Measure numbers: 360.

Measures 360-370: *f*, *pp*, *f*. Measure numbers: 370.

Measures 370-380: *f*, *pp*, *f*. Measure numbers: 380.

Measures 380-390: *f*, *pp*, *f*. Measure numbers: 390.

Measures 390-400: *f*, *pp*, *f*. Measure numbers: 400.

Measures 400-410: *f*, *pp*, *f*. Measure numbers: 410.

Measures 410-420: *f*, *pp*, *f*. Measure numbers: 420.

Measures 420-430: *f*, *pp*, *f*. Measure numbers: 430.

Measures 430-440: *f*, *pp*, *f*. Measure numbers: 440.

Measures 440-450: *f*, *pp*, *f*. Measure numbers: 450.

Measures 450-460: *f*, *pp*, *f*. Measure numbers: 460.

Measures 460-470: *f*, *pp*, *f*. Measure numbers: 470.

Measures 470-480: *f*, *pp*, *f*. Measure numbers: 480.

Measures 480-490: *f*, *pp*, *f*. Measure numbers: 490.

Measures 490-500: *f*, *pp*, *f*. Measure numbers: 500.