

A
JEFFERSON
SYMPHONY

WALTER ROSS

Percussion 3
Bass Drum
Tam-tam
Claves

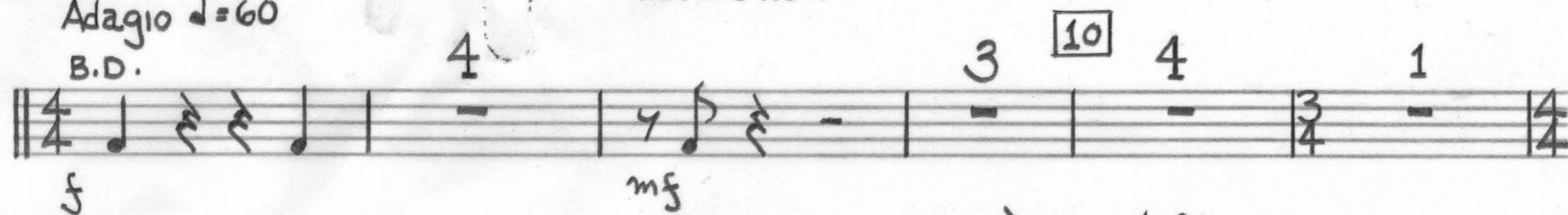
Perc. III
Bass Drum, Tam-tam,
Claves

A JEFFERSON SYMPHONY
I
REVOLUTION

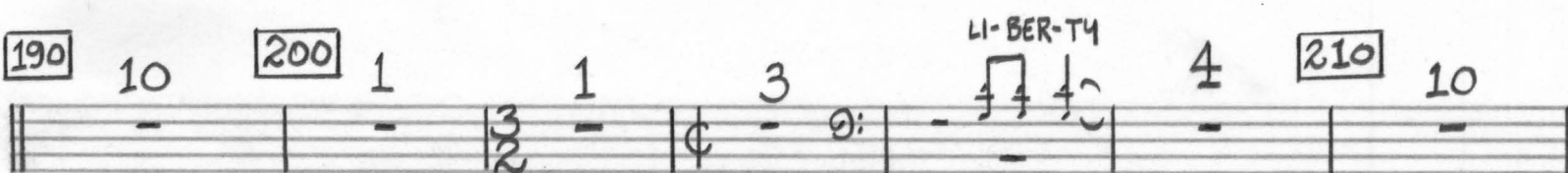
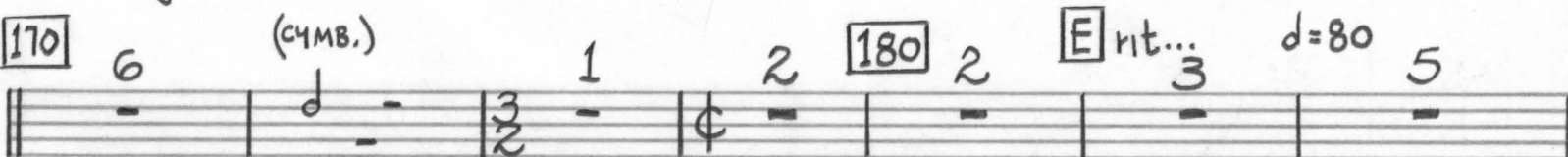
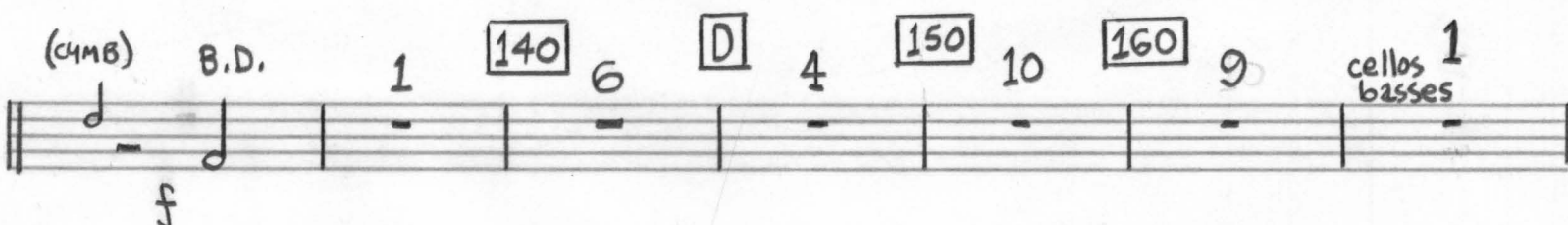
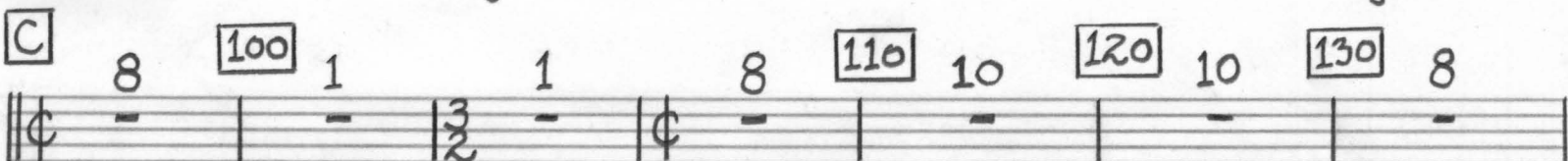
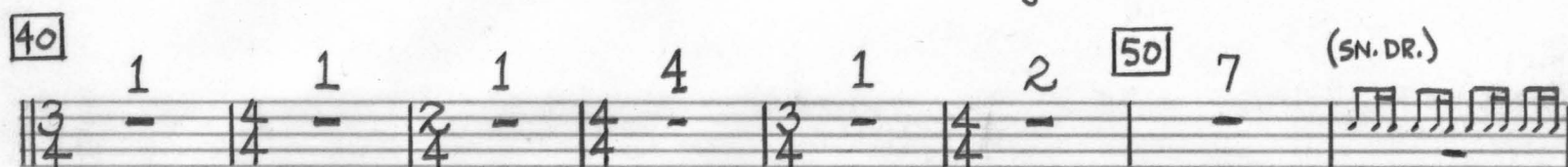
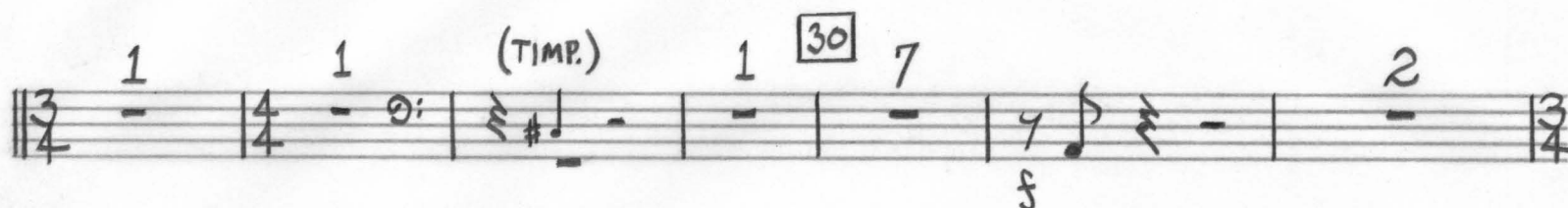
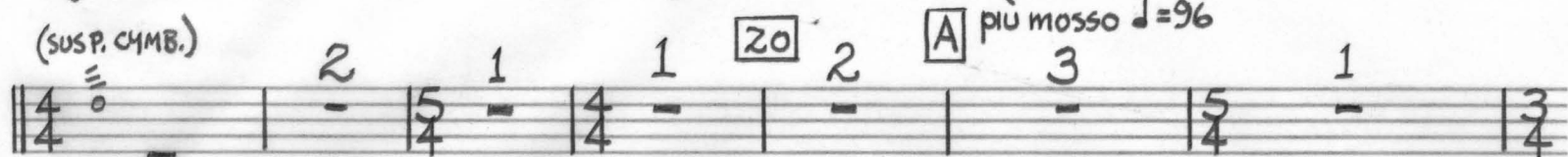
WALTER ROSS
1976

Adagio $\text{♩} = 60$

B.D.



f
(SUSP. CYMB.)



LI-BER-TY

220 3 [F] Bells 230 10 240 2 [G] poco più mosso $d=96$ to tam. tam 7

250 10 260 1 (TIMP.) 2 (SN. DR.) 4

270 Tam. tam to B.D. 2 [H] subito allegro $d=120$ 1 B.D. 5 280 2

f > choke f

7 290 10 s.d. 300 4 s.d. 3

310 2 [I] 1 1 6 320 10 330 9 (Tom. Toms)

mf

340 2 B.D. 4 [J] subito $d=144$ 3 350 7 (susp. cymb) B.D. f

1 360 2 B.D. 1 f f

4 B.D. ff

II

PRAYER FOR PEACE

TACET

Perc II
3.

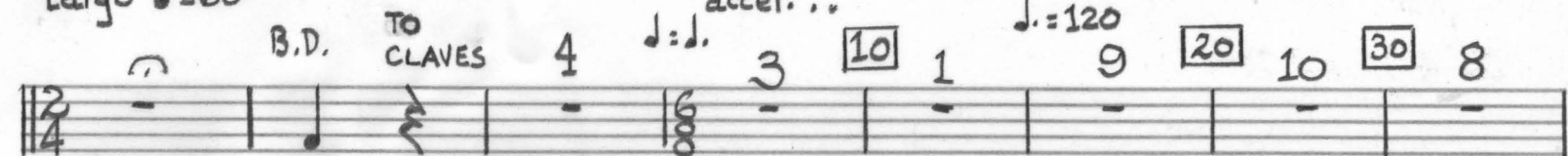
VISION

Largo $\text{♩} = 60$

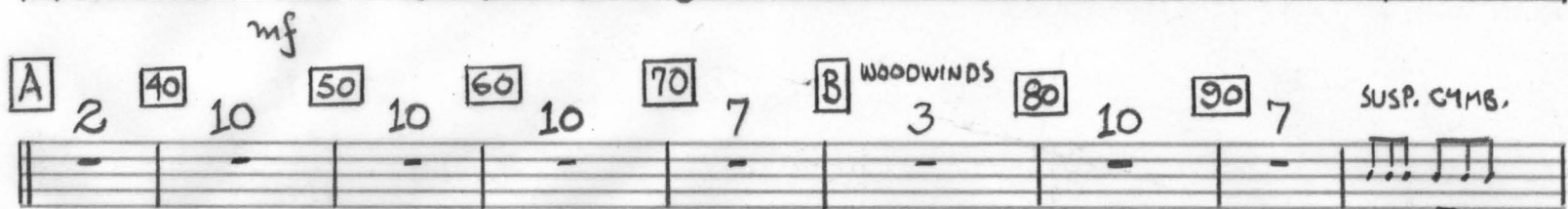
accel...

$\text{♩} = 120$

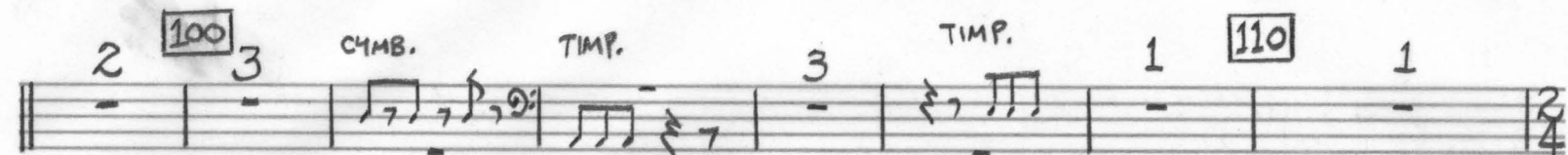
B.D. TO CLAVES 4 $\text{♩} = \text{♩}$ 3 [10] 1 9 [20] 10 [30] 8



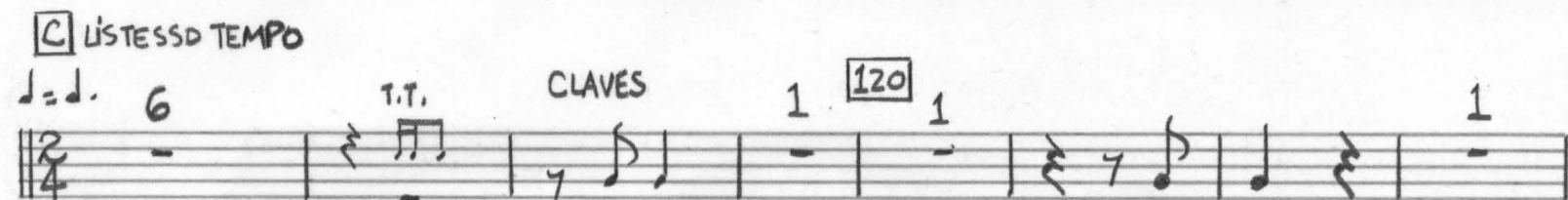
mf [A] 2 [40] 10 [50] 10 [60] 10 [70] 7 [8] WOODWINDS [80] 10 [90] 7 SUSP. CYMB.



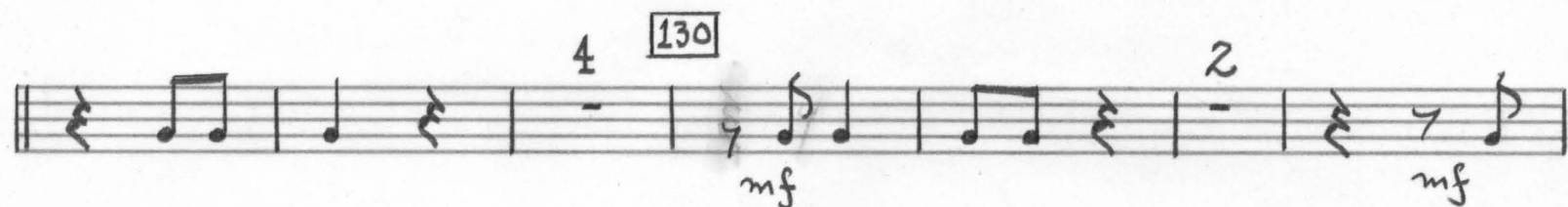
2 [100] 3 CYMB. TIMP. 3 TIMP. 1 [110] 1



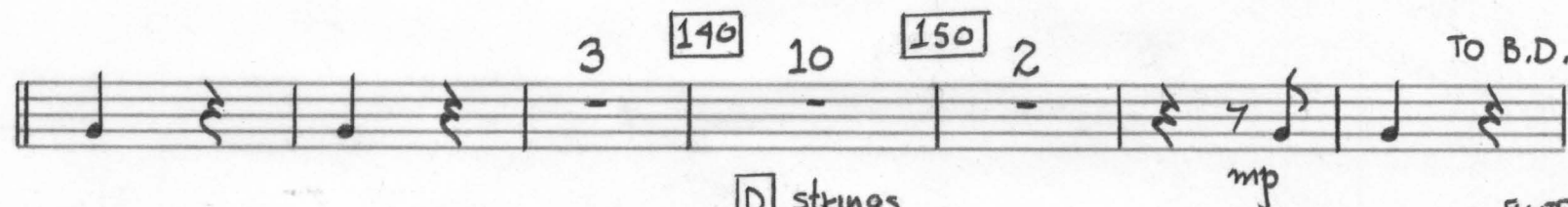
[C] LISTEN TO TEMPO $\text{♩} = \text{♩}$ 6 T.T. CLAVES 1 [120] 1 1



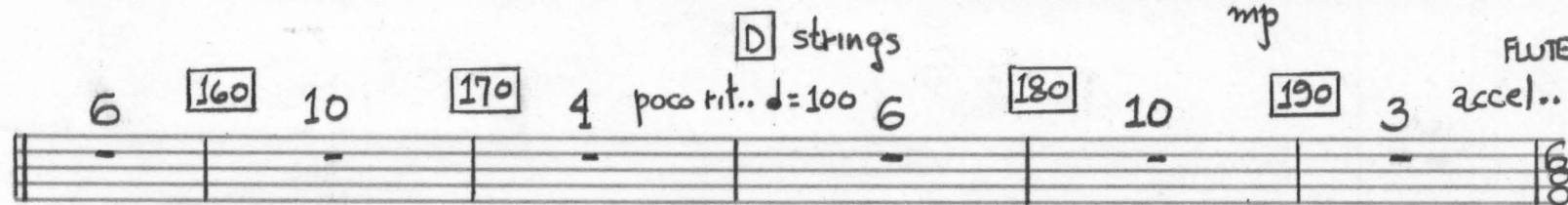
4 [130] 2 mf mf



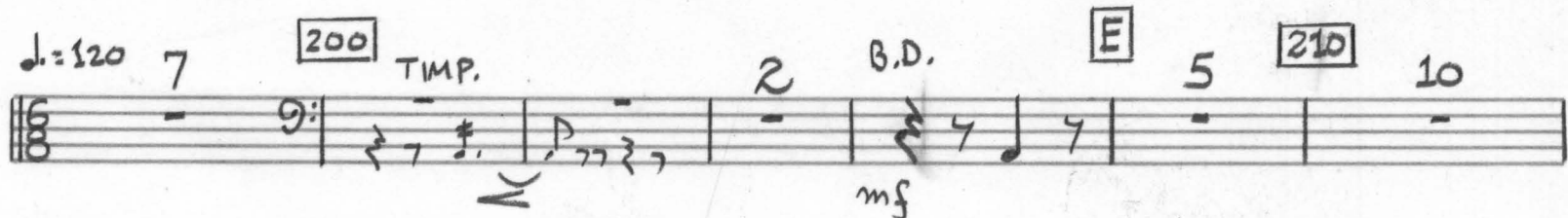
3 [140] 10 [150] 2 TO B.D. mp



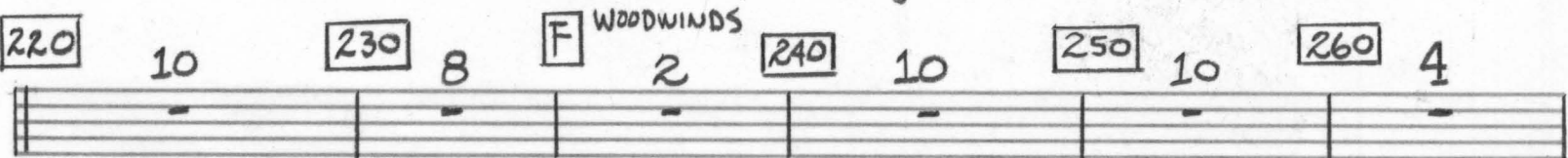
[D] strings 6 [160] 10 [170] 4 poco rit. $\text{♩} = 100$ 6 [180] 10 [190] 3 FLUTE accel...



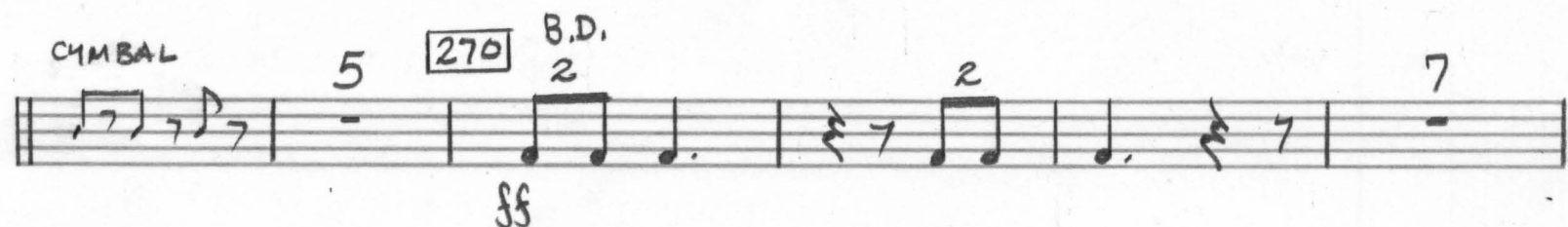
$\text{♩} = 120$ 7 [200] TIMP. 2 B.D. [E] 5 [210] 10 mf



[220] 10 [230] 8 [F] WOODWINDS [240] 10 [250] 10 [260] 4



CYMBAL 5 [270] B.D. 2 7 sf



280 10 290 4 2 5 300 3 2 poco rit... 2/4

poco meno mosso

$$J = 90$$

ff

accel., $\lambda = 120$

$\frac{1}{2} = 90^\circ$

1	1	3	2	2	6	10
$\frac{2}{4}$	$\frac{3}{4}$	$\frac{2}{4}$	-	-	$\frac{6}{8}$	-

330 REA-SON (TIMP.) 7 B.D. 340 2 5
