

A
JEFFERSON
SYMPHONY

WALTER ROSS

Piccolo

PICCOLO

ADAGIO $\text{♩} = 60$

A JEFFERSON SYMPHONY

I

REVOLUTION

WALTER ROSS

1975

tr ff p f p

2 4 1 3 1

[10] 4 1 3 1

[20] 1 2 3 1 1

A più mosso $\text{♩} = 96$

[30] 3 3 3 3

FL. I

[40] 2 1 1 1 4

[50] 1 1

F HORN I

[60] 5 1 2

F HORN I

f

70

POCO RUBATO **B** SUBITO ALLEGRO $\text{♩} = 120$

80

Handwritten musical notation for a piano piece. The notation is on a single staff with a treble clef. The key signature has one flat (B-flat). The tempo is marked as 80. The dynamics include a forte (ff) marking. The notation includes a repeat sign and several measures with rests and fingerings (2, 7, 2).

Handwritten musical score for Flute I, measures 1-4. The notation is on a single staff with a treble clef. Measure 1 contains a whole rest. Measure 2 contains four eighth notes with accents: G4, A4, B4, and A4. Measure 3 contains a whole rest. Measure 4 contains a half note G4, a half note F#4, and a half note E4. A dynamic marking 'f' is written below the staff between measures 3 and 4.

[illegible]

180 E RITARDANDO $\text{♩} = 80$ 190

200

1

1

1

Fl. I & II

#

ff

210

4 4

pp

220

2

pp

F

7 10 2 8 10

230 240 250

G POCO PIÙ MOSSO $\text{♩} = 96$

260

7 FL. I

270

3

H SUBITO ALLEGRO $\text{♩} = 120$

1 7

f ff

2

280

9 T.M.P.

290

3

f

1

f

300

3

Handwritten musical notation for the first staff of 'The Rose Tree'. The staff is in treble clef with a key signature of one sharp (F#). The melody begins with a quarter note G4 (F#), followed by a quarter note A4 (G#), and then a half note B4 (A#). The second measure consists of a half note C5 (B#) and a half note D5 (C#). The third measure is a half note E5 (D#) and a half note F5 (E#). The fourth measure is a half note G5 (F#) and a half note A5 (G#). The fifth measure is a half note B5 (A#) and a half note C6 (B#). The sixth measure is a half note D6 (C#) and a half note E6 (D#). The seventh measure is a half note F6 (E#) and a half note G6 (F#). The eighth measure is a half note A6 (G#) and a half note B6 (A#). The ninth measure is a half note C7 (B#) and a half note D7 (C#). The tenth measure is a half note E7 (D#) and a half note F7 (E#). The eleventh measure is a half note G7 (F#) and a half note A7 (G#). The twelfth measure is a half note B7 (A#) and a half note C8 (B#). The thirteenth measure is a half note D8 (C#) and a half note E8 (D#). The fourteenth measure is a half note F8 (E#) and a half note G8 (F#). The fifteenth measure is a half note A8 (G#) and a half note B8 (A#). The sixteenth measure is a half note C9 (B#) and a half note D9 (C#). The seventeenth measure is a half note E9 (D#) and a half note F9 (E#). The eighteenth measure is a half note G9 (F#) and a half note A9 (G#). The nineteenth measure is a half note B9 (A#) and a half note C10 (B#). The twentieth measure is a half note D10 (C#) and a half note E10 (D#). The twenty-first measure is a half note F10 (E#) and a half note G10 (F#). The twenty-second measure is a half note A10 (G#) and a half note B10 (A#). The twenty-third measure is a half note C11 (B#) and a half note D11 (C#). The twenty-fourth measure is a half note E11 (D#) and a half note F11 (E#). The twenty-fifth measure is a half note G11 (F#) and a half note A11 (G#). The twenty-sixth measure is a half note B11 (A#) and a half note C12 (B#). The twenty-seventh measure is a half note D12 (C#) and a half note E12 (D#). The twenty-eighth measure is a half note F12 (E#) and a half note G12 (F#). The twenty-ninth measure is a half note A12 (G#) and a half note B12 (A#). The thirtieth measure is a half note C13 (B#) and a half note D13 (C#). The thirty-first measure is a half note E13 (D#) and a half note F13 (E#). The thirty-second measure is a half note G13 (F#) and a half note A13 (G#). The thirty-third measure is a half note B13 (A#) and a half note C14 (B#). The thirty-fourth measure is a half note D14 (C#) and a half note E14 (D#). The thirty-fifth measure is a half note F14 (E#) and a half note G14 (F#). The thirty-sixth measure is a half note A14 (G#) and a half note B14 (A#). The thirty-seventh measure is a half note C15 (B#) and a half note D15 (C#). The thirty-eighth measure is a half note E15 (D#) and a half note F15 (E#). The thirty-ninth measure is a half note G15 (F#) and a half note A15 (G#). The fortieth measure is a half note B15 (A#) and a half note C16 (B#). The forty-first measure is a half note D16 (C#) and a half note E16 (D#). The forty-second measure is a half note F16 (E#) and a half note G16 (F#). The forty-third measure is a half note A16 (G#) and a half note B16 (A#). The forty-fourth measure is a half note C17 (B#) and a half note D17 (C#). The forty-fifth measure is a half note E17 (D#) and a half note F17 (E#). The forty-sixth measure is a half note G17 (F#) and a half note A17 (G#). The forty-seventh measure is a half note B17 (A#) and a half note C18 (B#). The forty-eighth measure is a half note D18 (C#) and a half note E18 (D#). The forty-ninth measure is a half note F18 (E#) and a half note G18 (F#). The fiftieth measure is a half note A18 (G#) and a half note B18 (A#). The fifty-first measure is a half note C19 (B#) and a half note D19 (C#). The fifty-second measure is a half note E19 (D#) and a half note F19 (E#). The fifty-third measure is a half note G19 (F#) and a half note A19 (G#). The fifty-fourth measure is a half note B19 (A#) and a half note C20 (B#). The fifty-fifth measure is a half note D20 (C#) and a half note E20 (D#). The fifty-sixth measure is a half note F20 (E#) and a half note G20 (F#). The fifty-seventh measure is a half note A20 (G#) and a half note B20 (A#). The fifty-eighth measure is a half note C21 (B#) and a half note D21 (C#). The fifty-ninth measure is a half note E21 (D#) and a half note F21 (E#). The sixtieth measure is a half note G21 (F#) and a half note A21 (G#). The sixty-first measure is a half note B21 (A#) and a half note C22 (B#). The sixty-second measure is a half note D22 (C#) and a half note E22 (D#). The sixty-third measure is a half note F22 (E#) and a half note G22 (F#). The sixty-fourth measure is a half note A22 (G#) and a half note B22 (A#). The sixty-fifth measure is a half note C23 (B#) and a half note D23 (C#). The sixty-sixth measure is a half note E23 (D#) and a half note F23 (E#). The sixty-seventh measure is a half note G23 (F#) and a half note A23 (G#). The sixty-eighth measure is a half note B23 (A#) and a half note C24 (B#). The sixty-ninth measure is a half note D24 (C#) and a half note E24 (D#). The seventieth measure is a half note F24 (E#) and a half note G24 (F#). The seventy-first measure is a half note A24 (G#) and a half note B24 (A#). The seventy-second measure is a half note C25 (B#) and a half note D25 (C#). The seventy-third measure is a half note E25 (D#) and a half note F25 (E#). The seventy-fourth measure is a half note G25 (F#) and a half note A25 (G#). The seventy-fifth measure is a half note B25 (A#) and a half note C26 (B#). The seventy-sixth measure is a half note D26 (C#) and a half note E26 (D#). The seventy-seventh measure is a half note F26 (E#) and a half note G26 (F#). The seventy-eighth measure is a half note A26 (G#) and a half note B26 (A#). The seventy-ninth measure is a half note C27 (B#) and a half note D27 (C#). The eightieth measure is a half note E27 (D#) and a half note F27 (E#). The eighty-first measure is a half note G27 (F#) and a half note A27 (G#). The eighty-second measure is a half note B27 (A#) and a half note C28 (B#). The eighty-third measure is a half note D28 (C#) and a half note E28 (D#). The eighty-fourth measure is a half note F28 (E#) and a half note G28 (F#). The eighty-fifth measure is a half note A28 (G#) and a half note B28 (A#). The eighty-sixth measure is a half note C29 (B#) and a half note D29 (C#). The eighty-seventh measure is a half note E29 (D#) and a half note F29 (E#). The eighty-eighth measure is a half note G29 (F#) and a half note A29 (G#). The eighty-ninth measure is a half note B29 (A#) and a half note C30 (B#). The ninetieth measure is a half note D30 (C#) and a half note E30 (D#). The hundredth measure is a half note F30 (E#) and a half note G30 (F#). The hundred-first measure is a half note A30 (G#) and a half note B30 (A#). The hundred-second measure is a half note C31 (B#) and a half note D31 (C#). The hundred-third measure is a half note E31 (D#) and a half note F31 (E#). The hundred-fourth measure is a half note G31 (F#) and a half note A31 (G#). The hundred-fifth measure is a half note B31 (A#) and a half note C32 (B#). The hundred-sixth measure is a half note D32 (C#) and a half note E32 (D#). The hundred-seventh measure is a half note F32 (E#) and a half note G32 (F#). The hundred-eighth measure is a half note A32 (G#) and a half note B32 (A#). The hundred-ninth measure is a half note C33 (B#) and a half note D33 (C#). The hundred-tieth measure is a half note E33 (D#) and a half note F33 (E#). The hundred-first measure is a half note G33 (F#) and a half note A33 (G#). The hundred-second measure is a half note B33 (A#) and a half note C34 (B#). The hundred-third measure is a half note D34 (C#) and a half note E34 (D#). The hundred-fourth measure is a half note F34 (E#) and a half note G34 (F#). The hundred-fifth measure is a half note A34 (G#) and a half note B34 (A#). The hundred-sixth measure is a half note C35 (B#) and a half note D35 (C#). The hundred-seventh measure is a half note E35 (D#) and a half note F35 (E#). The hundred-eighth measure is a half note G35 (F#) and a half note A35 (G#). The hundred-ninth measure is a half note B35 (A#) and a half note C36 (B#). The hundred-tieth measure is a half note D36 (C#) and a half note E36 (D#). The hundred-first measure is a half note F36 (E#) and a half note G36 (F#). The hundred-second measure is a half note A36 (G#) and a half note B36 (A#). The hundred-third measure is a half note C37 (B#) and a half note D37 (C#). The hundred-fourth measure is a half note E37 (D#) and a half note F37 (E#). The hundred-fifth measure is a half note G37 (F#) and a half note A37 (G#). The hundred-sixth measure is a half note B37 (A#) and a half note C38 (B#). The hundred-seventh measure is a half note D38 (C#) and a half note E38 (D#). The hundred-eighth measure is a half note F38 (E#) and a half note G38 (F#). The hundred-ninth measure is a half note A38 (G#) and a half note B38 (A#). The hundred-tieth measure is a half note C39 (B#) and a half note D39 (C#). The hundred-first measure is a half note E39 (D#) and a half note F39 (E#). The hundred-second measure is a half note G39 (F#) and a half note A39 (G#). The hundred-third measure is a half note B39 (A#) and a half note C40 (B#). The hundred-fourth measure is a half note D40 (C#) and a half note E40 (D#). The hundred-fifth measure is a half note F40 (E#) and a half note G40 (F#). The hundred-sixth measure is a half note A40 (G#) and a half note B40 (A#). The hundred-seventh measure is a half note C41 (B#) and a half note D41 (C#). The hundred-eighth measure is a half note E41 (D#) and a half note F41 (E#). The hundred-ninth measure is a half note G41 (F#) and a half note A41 (G#). The hundred-tieth measure is a half note B41 (A#) and a half note C42 (B#). The hundred-first measure is a half note D42 (C#) and a half note E42 (D#). The hundred-second measure is a half note F42 (E#) and a half note G42 (F#). The hundred-third measure is a half note A42 (G#) and a half note B42 (A#). The hundred-fourth measure is a half note C43 (B#) and a half note D43 (C#). The hundred-fifth measure is a half note E43 (D#) and a half note F43 (E#). The hundred-sixth measure is a half note G43 (F#) and a half note A43 (G#). The hundred-seventh measure is a half note B43 (A#) and a half note C44 (B#). The hundred-eighth measure is a half note D44 (C#) and a half note E44 (D#). The hundred-ninth measure is a half note F44 (E#) and a half note G44 (F#). The hundred-tieth measure is a half note A44 (G#) and a half note B44 (A#). The hundred-first measure is a half note C45 (B#) and a half note D45 (C#). The hundred-second measure is a half note E45 (D#) and a half note F45 (E#). The hundred-third measure is a half note G45 (F#) and a half note A45 (G#). The hundred-fourth measure is a half note B45 (A#) and a half note C46 (B#). The hundred-fifth measure is a half note D46 (C#) and a half note E46 (D#). The hundred-sixth measure is a half note F46 (E#) and a half note G46 (F#). The hundred-seventh measure is a half note A46 (G#) and a half note B46 (A#). The hundred-eighth measure is a half note C47 (B#) and a half note D47 (C#). The hundred-ninth measure is a half note E47 (D#) and a half note F47 (E#). The hundred-tieth measure is a half note G47 (F#) and a half note A47 (G#). The hundred-first measure is a half note B47 (A#) and a half note C48 (B#). The hundred-second measure is a half note D48 (C#) and a half note E48 (D#). The

Handwritten musical notation for the first staff of 'The Rose Tree'. The staff begins with a treble clef and a key signature of one flat (B-flat). The melody starts with a quarter note G4, followed by a quarter note F4, and then a quarter note E4. A slur covers the next two notes: a quarter note D4 and a quarter note C4. The staff then continues with a quarter rest, followed by a quarter note B3, and then a quarter note A3. The staff ends with a double bar line.

[illegible][illegible][illegible]

J SUBITO $\text{♩} = 144$

1 FL. I. 350 5

The image shows a handwritten musical score for Flute I. It begins with a box containing the letter 'J', followed by the word 'SUBITO' and a tempo marking of a quarter note equal to 144. The score is written on a single staff with a treble clef. It starts with a first ending bracketed '1' and a second ending bracketed '5'. A measure count of 350 is written in a box. The key signature has one sharp (F#) and one flat (Bb). The notation includes various notes, rests, and a fermata.

[illegible]

Handwritten musical notation for the first staff of 'The Rose Tree'. The staff is in treble clef with a key signature of one flat (B-flat). The tempo/mood is marked 'ff' (fortissimo). The notation consists of a series of eighth and quarter notes, many with accents (>), and a final measure with a double bar line and a repeat sign.

III - VISION

LARGO ! = 60

Handwritten musical score for a single melodic line in 2/4 time. The score consists of 10 staves of music. It includes various musical notations such as notes, rests, accidentals, and dynamic markings. Key features include:

- Tempo marking: $\text{quarter note} = 120$
- Instruction: *accel.* (accelerando)
- Measure numbers: 10, 20, 30, 40, 50, 60, 70, and 80
- Section markers: A and B
- Dynamic markings: *p*, *mp*, *f*, and *mf*
- Key signature: one flat (B-flat)
- Clef: treble clef

90

95

100

sf

110

ISTESSO TEMPO

120

130

140

Oboe

150

160

170

POCO RIT.

CHORUS: "AND SE-RENE

STRINGS.

180

190

ACCEL. --- ! = 120

Fl. 1

200

Vn. 1

E

P

210

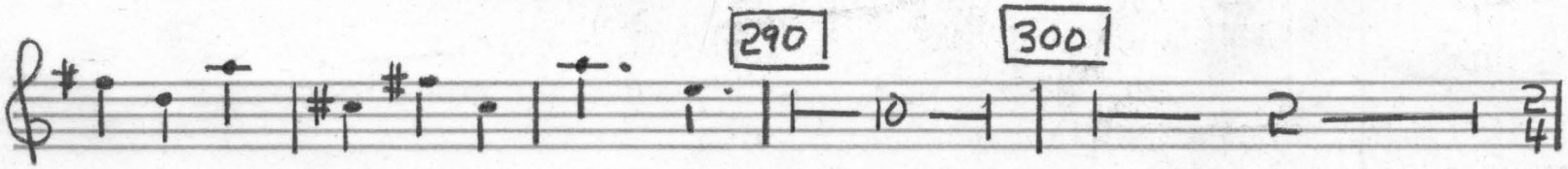
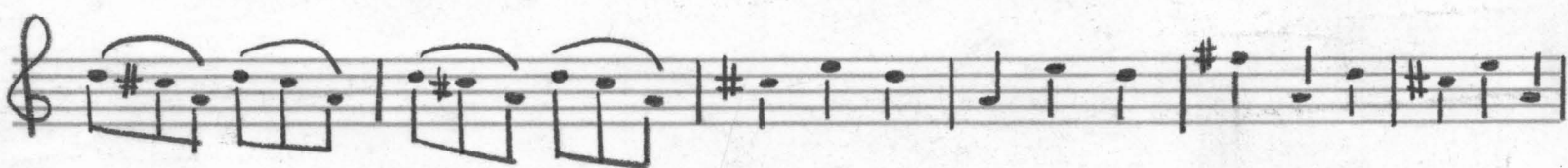
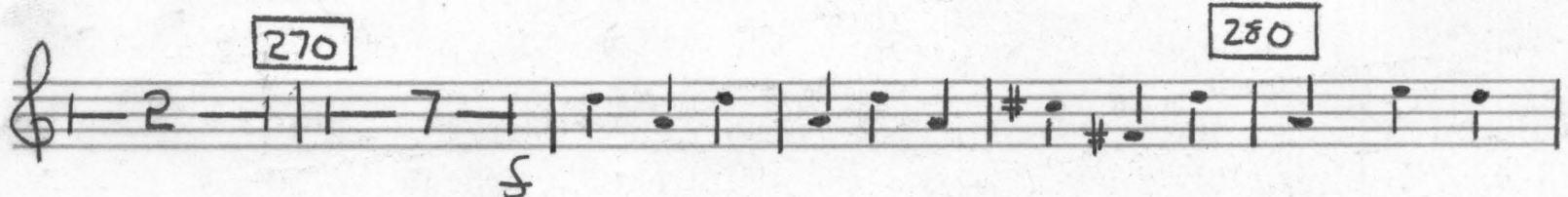
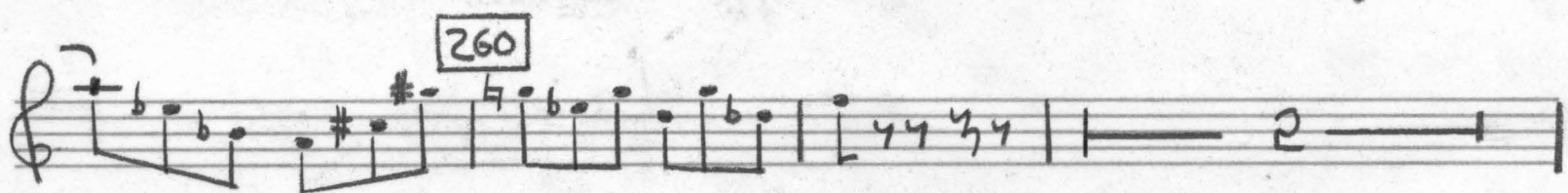
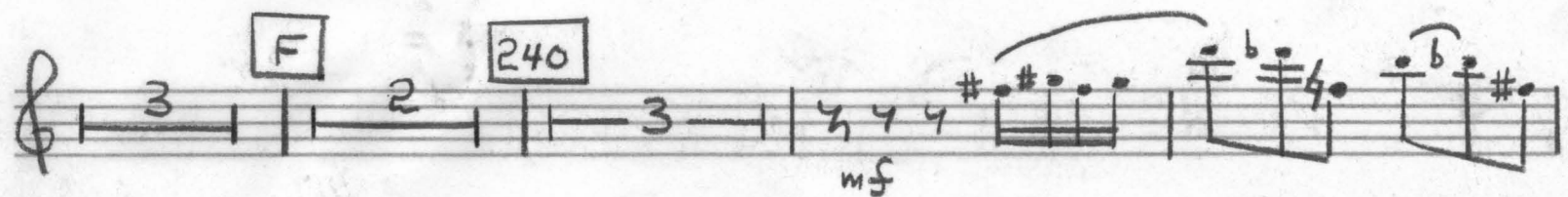
220

mf

230

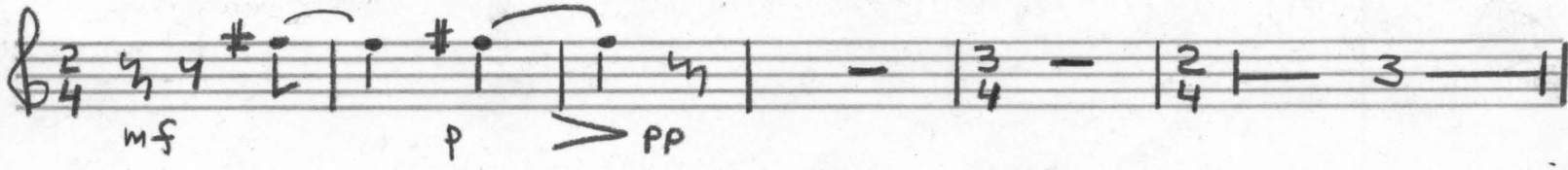
f

TIME



POLO RIT.

POLO MENO MOSO ! = 90



Handwritten musical score for "The Rose Tree" on a grand staff. The score is divided into four measures, each with a measure number in a box: 310, 320, 330, and 340. Measure 310 starts with a treble clef, a 4-measure rest, a 6/8 time signature, and a series of eighth notes with accents and a 'f' dynamic. Measure 320 starts with a treble clef, an 8-measure rest, a 2/4 time signature, and a series of eighth notes with accents and a 'f' dynamic. Measure 330 starts with a treble clef, a 4-measure rest, and a series of eighth notes with accents and a 'f' dynamic. Measure 340 starts with a treble clef, a 7-measure rest, and a series of eighth notes with accents and a 'ff' dynamic. The score ends with a double bar line.

1. The first step in the process is to identify the problem or issue that needs to be addressed. This involves gathering information and understanding the context of the problem.

2. Once the problem is identified, the next step is to define the objectives and goals of the project. This helps to clarify what needs to be achieved and provides a clear direction for the team.

3. The third step is to develop a plan or strategy to address the problem. This involves breaking down the problem into smaller, manageable tasks and determining the resources needed to complete each task.

4. The fourth step is to implement the plan. This involves putting the strategy into action and monitoring progress regularly to ensure that the project is on track.

5. The final step is to evaluate the results of the project. This involves comparing the actual outcomes with the objectives and goals to determine the effectiveness of the project and identify areas for improvement.

(The following section contains redacted information.)

1. The first step in the process is to identify the problem or issue that needs to be addressed. This involves gathering information and understanding the context of the problem.

2. Once the problem is identified, the next step is to define the objectives and goals of the project. This helps to clarify what needs to be achieved and provides a clear direction for the team.

3. The third step is to develop a plan or strategy to address the problem. This involves breaking down the problem into smaller, manageable tasks and determining the resources needed to complete each task.

4. The fourth step is to implement the plan. This involves putting the strategy into action and monitoring progress to ensure that the project is on track.

5. The final step is to evaluate the results of the project. This involves assessing the outcomes against the objectives and goals and identifying any areas for improvement.