

**A**  
**JEFFERSON**  
**SYMPHONY**

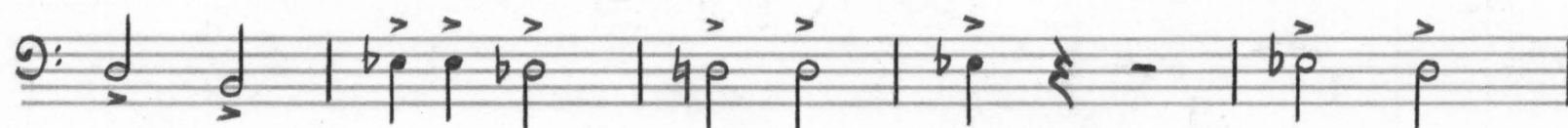
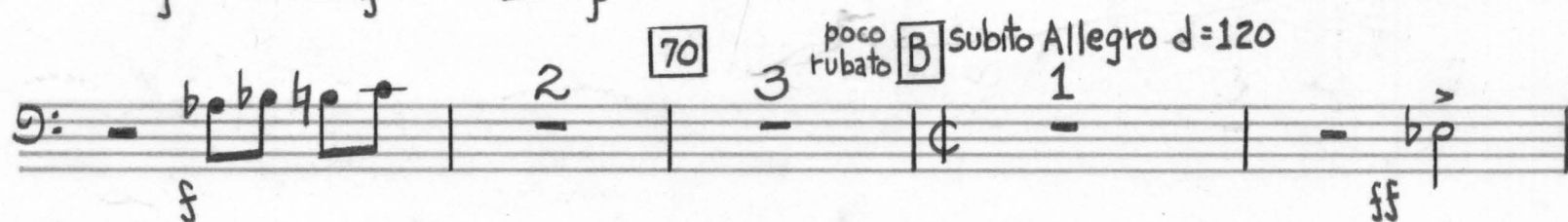
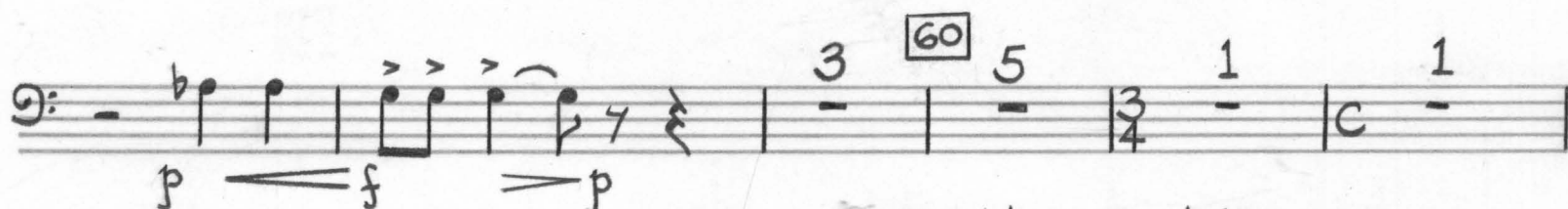
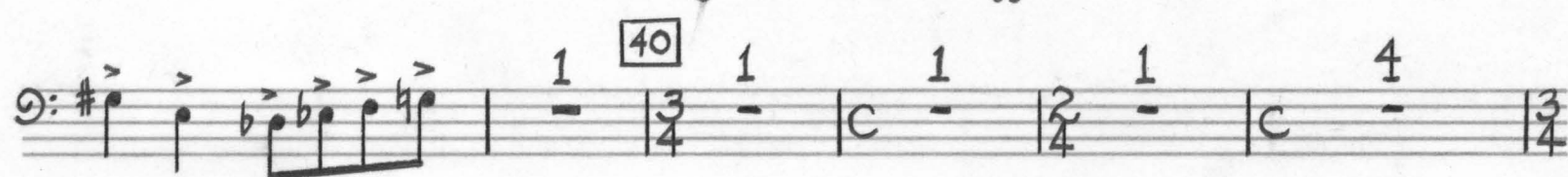
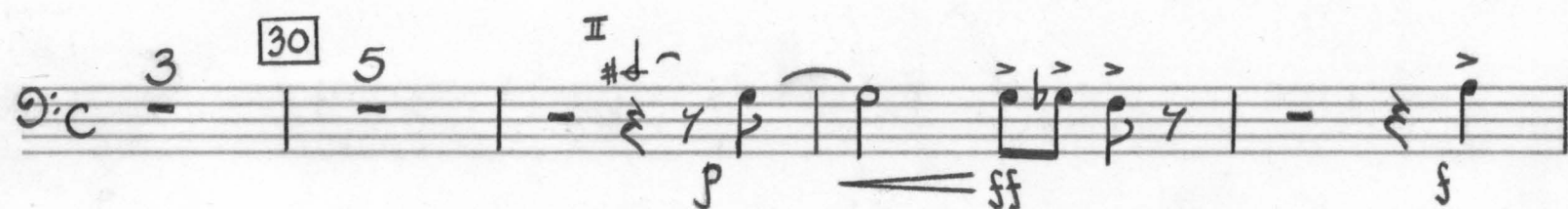
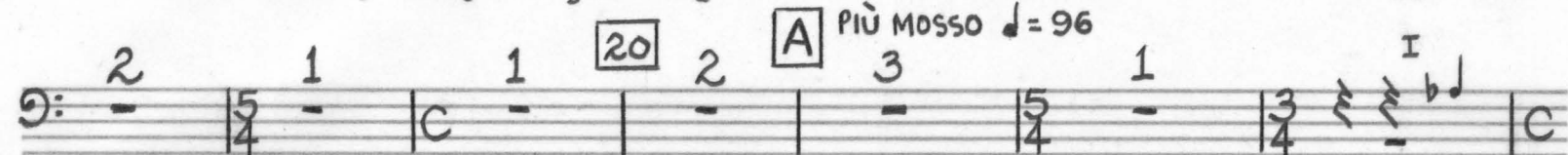
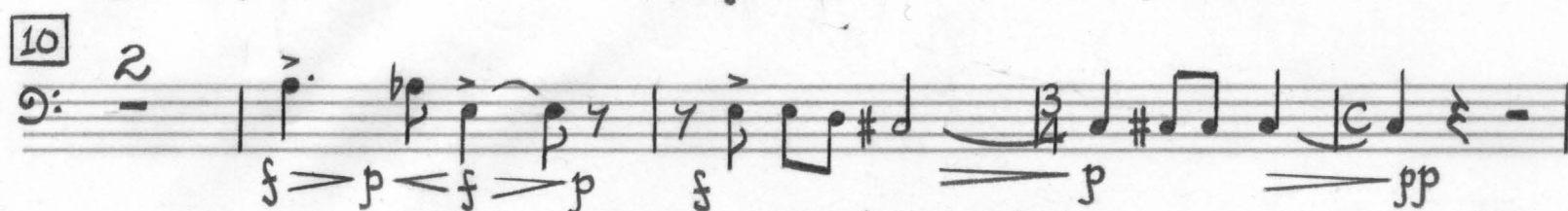
WALTER ROSS

**Trombone 3**  
**(with trigger)**

3<sup>RD</sup> TROMBONE (WITH TRIGGER)

## A JEFFERSON SYMPHONY

WALTER ROSS

Adagio  $\text{♩} = 60$ I  
REVOLUTIONpoco  
rubato [B] subito Allegro  $\text{♩} = 120$

80

90

101

110

120

130

140

150

160

170

180

190

200

210

220

230

240

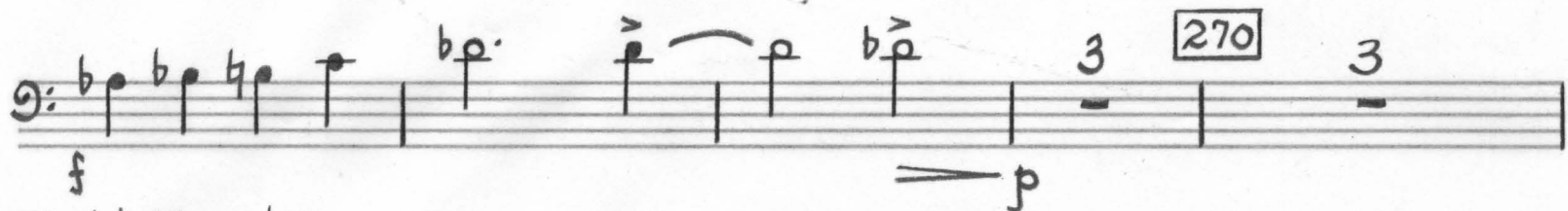
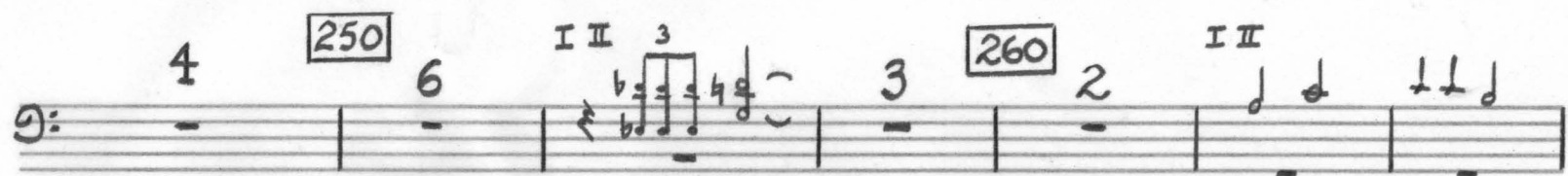
ALL EYES ARE

poco più mosso  
♩ = 96

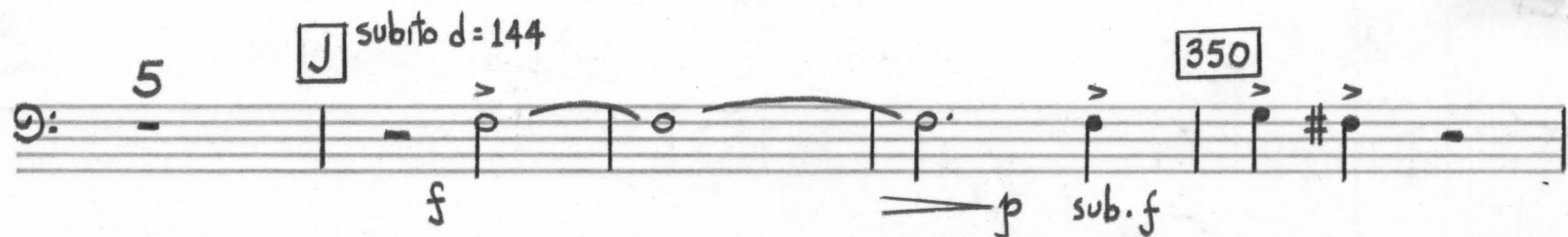
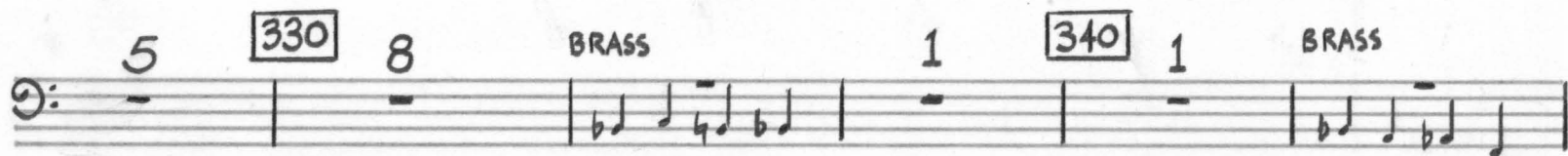
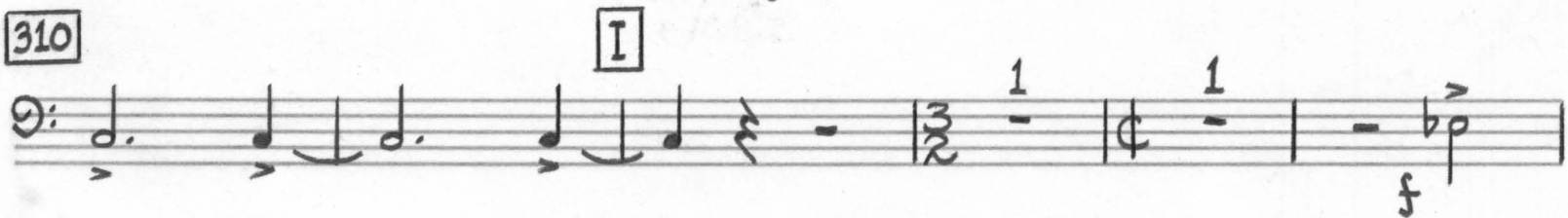
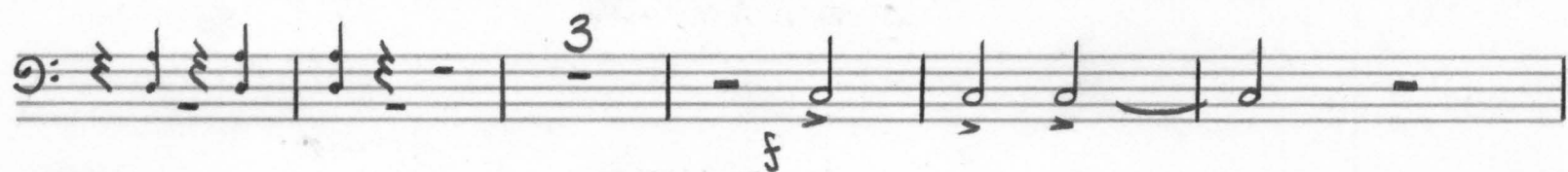
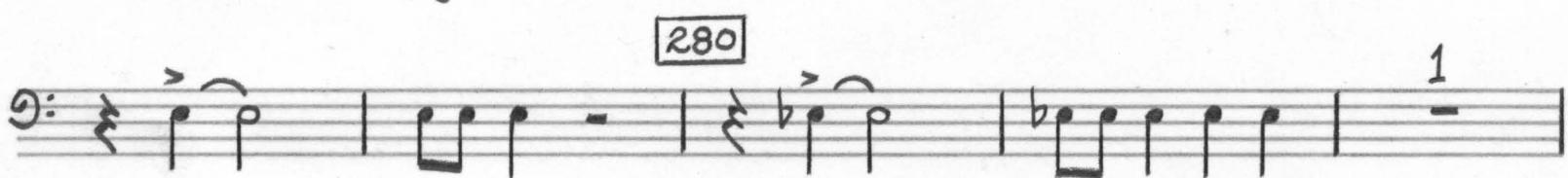
open



3<sup>RD</sup> TROMBONE  
3.



H subito Allegro  $\text{♩} = 120$



Measures 1-4 of the 3rd Trombone part. Measure 1 has a first ending bracket. Measure 2 has a fortissimo (ff) dynamic. Measure 3 has a fortissimo (f) dynamic. Measure 4 has a second ending bracket. A rehearsal mark [360] is placed above measure 2.

## II

PRAYER FOR PEACE

TACET

## III

VISION

Largo  $\text{♩} = 60$

Measures 5-10 of the 3rd Trombone part. Measure 5 is in 2/4 time. Measure 6 has a fortissimo (f) dynamic. Measure 7 has a fortissimo (f) dynamic. Measure 8 has a fortissimo (f) dynamic. Measure 9 has a fortissimo (f) dynamic. Measure 10 has a fortissimo (f) dynamic. A rehearsal mark [10] is placed above measure 8. A tempo change to  $\text{♩} = 120$  is indicated at measure 8. A rehearsal mark [A] is placed above measure 10. A rehearsal mark [20] is placed above measure 8. A rehearsal mark [30] is placed above measure 10. A rehearsal mark [5] is placed above measure 10.

3<sup>RD</sup> TROMBONE  
5.

1 40 10 50 10 60 10 70 2 2<sup>ND</sup> 77  $\hat{f}$   $\hat{f}$   $\hat{f}$  77 2

[B] mute 2 80 10 90 mute open

8 100 10 110 1 C L'ISTESSO TEMPO 120 10 130 10

140 10 150 10 160 10 170 4 poco rit...  $\text{♩} = 100$  6 [D] strings

180 10 190 3 accel...  $\text{♩} = 120$  4 1<sup>ST</sup> TRUMPET

1 200 5 [E] 5 210 1<sup>ST</sup> TRUMPET 10 220 10 230 8 [F] WOODWINDS 2

240 10 250 10 260 10 270 TUBAS 1

$\text{ff}$  2 2 2 2

2 280 10 290 4  $\text{p}$   $\text{ff}$

2 2 2 2



**[300]** *poco rit...* *poco meno mosso*  $\text{♩} = 90$  **[310]** *accel...*

*3* *2* *1* *1* *3* *2*

*...♩. = 120* **[320]** *5* *8*

**[330]** *4* *2* *f* *ff*

**[340]** *f* *ff* *fff* *1*