

**A**  
**JEFFERSON**  
**SYMPHONY**

WALTER ROSS

**Violoncello**

VIOLONCELLO

# A JEFFERSON SYMPHONY

WALTER ROSS  
1976

ADAGIO  $\text{♩} = 60$

# I REVOLUTION

REVOLUTION

Div.

ff — f — mf — p

f — p

10

pizz

p

1 2 pizz

p

20

A più mosso  $\text{♩} = 96$

arco

f p

pizz

f mf

1

f

30

arco

pp

ff

40

Handwritten musical score for a single staff. The piece is in D major (one sharp) and 2/4 time. It consists of 10 measures. Measure 1: Quarter rest, dynamic '2'. Measure 2: Quarter rest, dynamic 'p', articulation 'b'. Measure 3: Quarter rest, dynamic 'p', articulation 'b'. Measure 4: Quarter rest, dynamic 'p', articulation 'b'. Measure 5: Quarter rest, dynamic 'p', articulation 'b'. Measure 6: Quarter rest, dynamic 'p', articulation 'b'. Measure 7: Quarter rest, dynamic 'p', articulation 'b'. Measure 8: Quarter rest, dynamic 'p', articulation 'b'. Measure 9: Quarter rest, dynamic 'p', articulation 'b'. Measure 10: Quarter rest, dynamic 'p', articulation 'b'. The score includes a crescendo hairpin from measure 2 to 4 and a decrescendo hairpin from measure 4 to 6. The dynamics 'fff' and 'pp' are written below the staff. The piece ends with a double bar line.

Handwritten musical notation for the first system of 'The Rose Tree'. The notation is on a single staff with a treble clef. It begins with a whole rest, followed by a half note G4 (labeled 'f'), a half note A4 (labeled 'p'), and a half note B4. The next measure contains a half note G4, a half note F#4, and a half note E4. The third measure is a whole rest, followed by a half note G4 (labeled 'f'), a half note A4 (labeled 'p'), and a half note B4. The fourth measure is a whole rest, followed by a half note G4, a half note F#4, and a half note E4. The fifth measure is a whole rest, followed by a half note G4, a half note A4, and a half note B4. The sixth measure is a whole rest, followed by a half note G4, a half note A4, and a half note B4. The system ends with a double bar line.

50

ff

Handwritten musical notation for the bass line of 'The Rose Tree'. The notation is on a single staff with a bass clef. It consists of six measures. The first measure contains a quarter note G2 with an accent (>) and a sixteenth rest. The second measure contains a quarter note F2 with an accent (>), followed by a quarter note E2 with an accent (>), and a quarter note D2 with an accent (>). The third measure contains a quarter note C2 with an accent (>), followed by a quarter note B1 with an accent (>), and a quarter rest. The fourth measure contains a half rest. The fifth measure contains a half rest. The sixth measure contains a half note G2 with an accent (>), followed by a half note F2 with an accent (>), and a half rest. The dynamic marking 'pp' (pianissimo) is written below the first measure, and 'p' (piano) is written below the second measure. A crescendo hairpin is placed between the first and second measures, and a decrescendo hairpin is placed between the second and third measures.

Handwritten musical notation for the bass line of "The Sound of Silence". The notation is on a single staff with a treble clef. It begins with a "pizz" (pizzicato) marking above the first measure. The first measure contains a quarter note G2, a quarter note F2, and a half note E2. The second measure is a whole rest. The third measure is marked with a "1" above it and a box containing "60". It contains a quarter note G2, a quarter note F2, and a half note E2. The fourth measure is marked with a "p" (piano) below it and contains a quarter note G2, a quarter note F2, and a half note E2. The fifth measure contains a quarter note G2, a quarter note F2, and a half note E2. The sixth measure contains a quarter note G2, a quarter note F2, and a half note E2. The seventh measure contains a quarter note G2, a quarter note F2, and a half note E2. The eighth measure contains a quarter note G2, a quarter note F2, and a half note E2. The ninth measure contains a quarter note G2, a quarter note F2, and a half note E2. The tenth measure contains a quarter note G2, a quarter note F2, and a half note E2. The notation ends with a wavy line.

[illegible][illegible]

**B** subito Allegro  $\underline{d}=120$

subito Allegro  $\text{♩} = 120$

80

5

3

v.s.

V.S.



90 1 1 C

100

110 2 3 2 3 4 5

120 5 ff mp

legato 130 f

140 3

D 4 150 8 violas 160 1

Handwritten musical score for cello, measures 170-210. The score is written on a single staff with a bass clef and a key signature of one flat (B-flat). The tempo is marked as  $\text{rit.} \dots$  and the tempo change is indicated as  $\dots d=80$ . The score includes various dynamics such as  $f$ ,  $ff$ ,  $pp$ ,  $mf$ , and  $pizz$ . The score is divided into measures 170, 180, 190, 200, and 210. The notation includes eighth notes, quarter notes, half notes, and full notes, as well as rests and accidentals. The score ends with a double bar line and the instruction "V.S." (Vice Versa).

Measures 170-179:  $f$ ,  $ff$ ,  $pp$ ,  $mf$ ,  $pp$ ,  $mf$ .

Measures 180-189:  $pp$ ,  $mf$ ,  $pp$ ,  $mf$ .

Measures 190-199:  $pp$ ,  $mf$ ,  $pp$ ,  $mf$ .

Measures 200-209:  $pp$ ,  $mf$ ,  $ff$ ,  $pizz$ ,  $ff$ .

Measure 210:  $f$ ,  $ff$ ,  $pizz$ ,  $ff$ .

V.S.

5.  
cello

arco

*f* *mf* *p*

*mf* *f* *mf* *p*

[220] *pp* *F* div.

*ppp* 2 [230] 10 [240] 2

[G] poco più mosso  $d=96$

*pp* *pp* *mp* *pp*

pizz *f* *p* *p* arco *p*

*f* 3 *f*

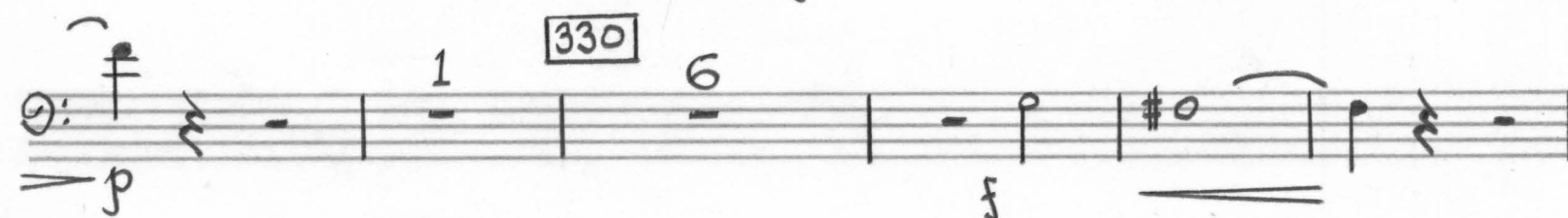
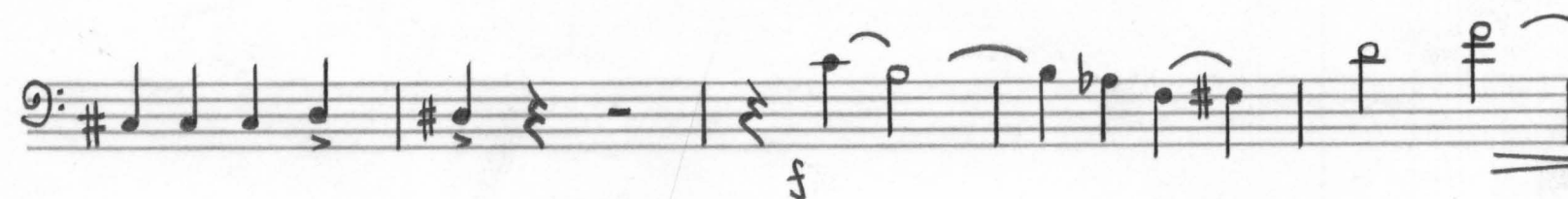
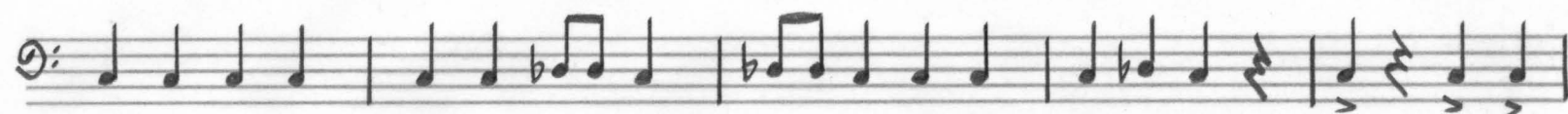
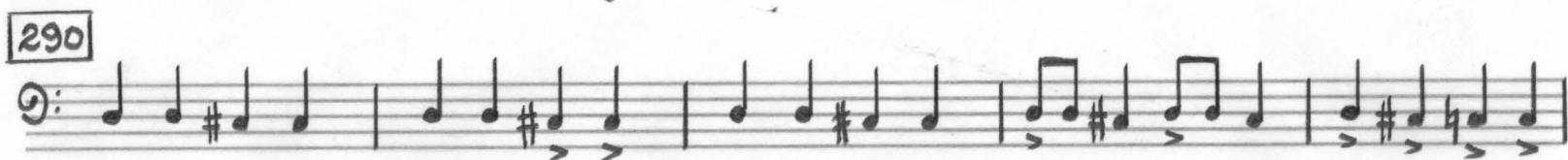
[270]

[H] subito Allegro  $d=120$

*sff* *sub. p*

*f* *pizz* *f* 1 [280] 2





7.  
cello

**[J] subito d=144**

**pizz** **f** **arco** **f**

**1** **350**

**2** **div.** **f**

**360** **ff**

**1**

**fff**

**II**

**CALM d=66**

**PRAYER FOR PEACE** **[A]**

**1** **1** **4** **mp**

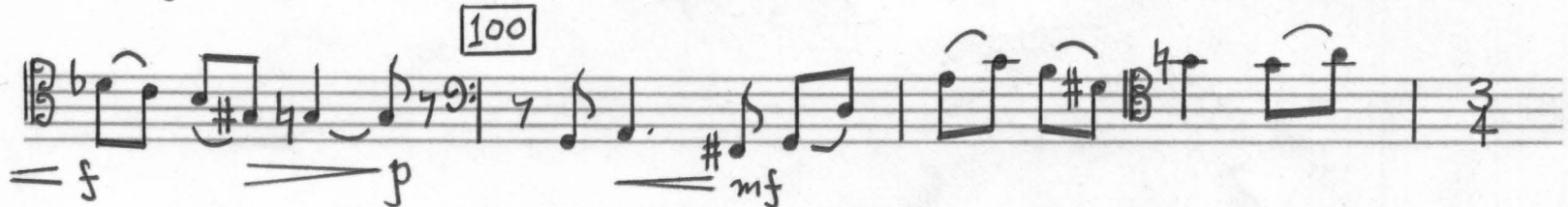
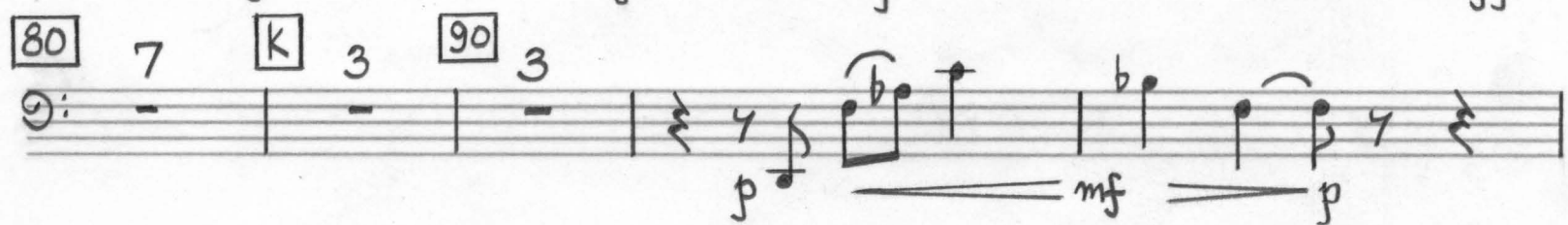
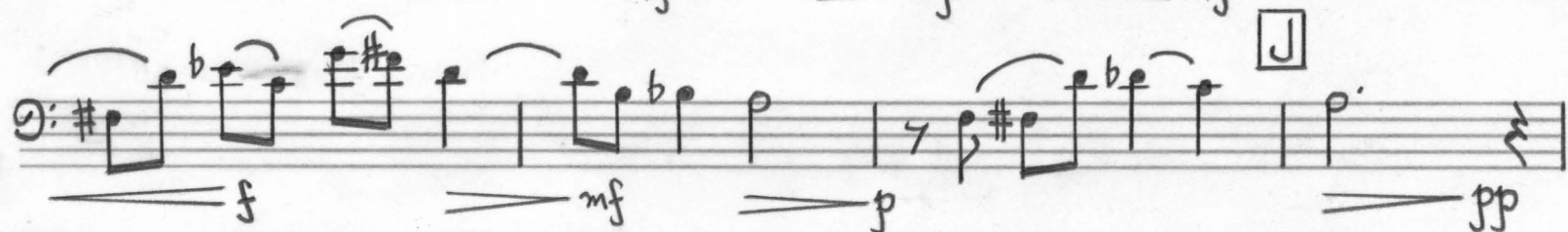
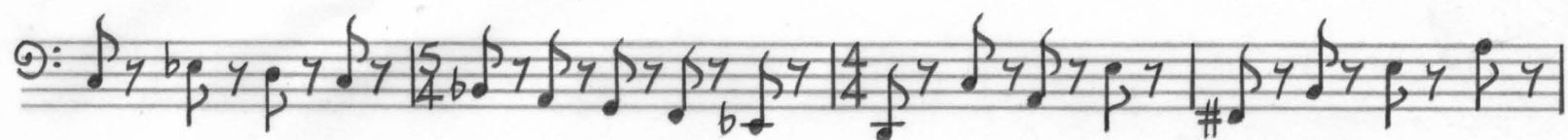
**10**

**[B]**

**[C]** **p**



Handwritten musical score for cello, page 8. The score consists of ten staves of music in bass clef, 4/4 time. It includes various musical notations such as notes, rests, accidentals, and dynamic markings. Section markers [D], [30], [E], [40], [F], [G], [50], [H], and [60] are placed above the staves. The tempo marking "più mosso" and a metronome indication "♩ = 100" are present in the sixth staff.



120 1 HARP M 4 rit.

130 5 1 5

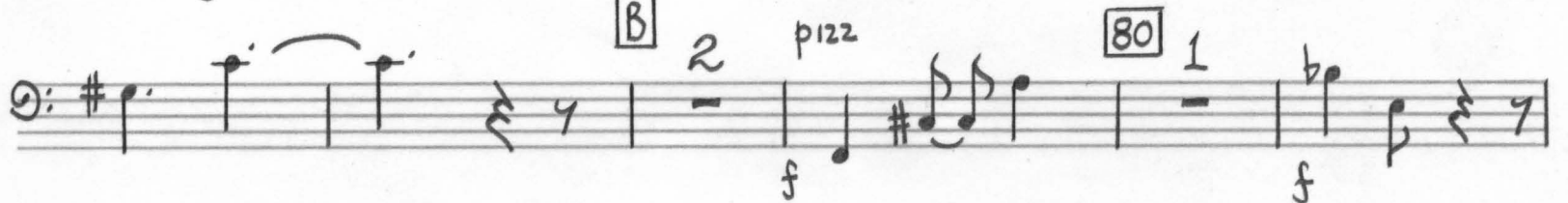
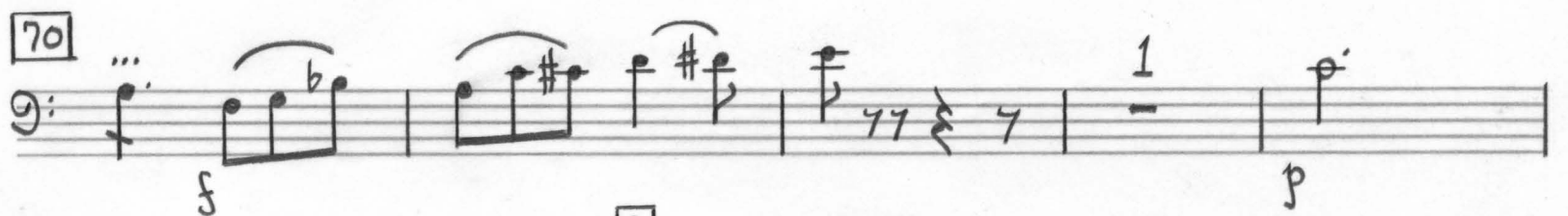
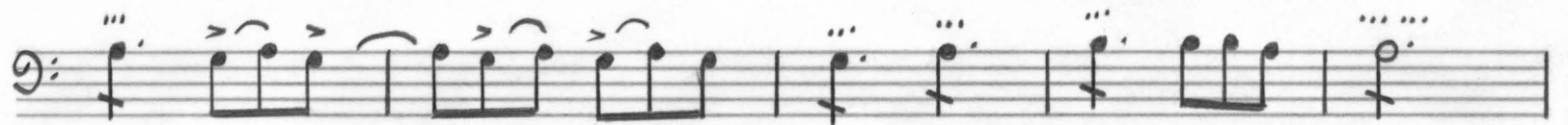
Largo J=60 VISION

10 20 30 40 pizz 50 6





[60] off the string



← J. = J. → 3 pizz 2 col legno 1

Handwritten musical notation for a single staff. It starts with a treble clef and a 2/4 time signature. Above the staff, there are tempo markings: "← J. = J. →" and "3". The first measure contains a half note G4. The second measure contains a half note A4 with an accent (>) and the marking "pizz". The third measure contains a half rest with the marking "2". The fourth measure contains a half rest with the marking "col legno". The fifth measure contains a half note Bb4 with the marking "mf". The sixth measure contains a half note A4. The seventh measure contains a half note G4. The eighth measure contains a half rest with the marking "1".

120 1

*mf*

Handwritten musical notation for the bass line of 'The Rose Tree'. The notation is on a single staff with a treble clef and a key signature of one sharp (F#). The melody consists of the following notes: G4 (quarter), A4 (quarter), B4 (quarter), C5 (quarter), B4 (quarter), A4 (quarter), G4 (quarter), F#4 (quarter), E4 (quarter), D4 (half). The tempo is marked '130' in a box. The dynamics are marked 'mf' (mezzo-forte) under the first and last measures. The notation includes a '3' over the first measure, a '7' over the second measure, and a '2' over the third measure.

Handwritten musical notation for a single staff. The key signature has one sharp (F#). The tempo is marked '150' in a box. The time signature is 4/2. The notation includes various note values, rests, and a dynamic marking 'mf'.

Handwritten musical notation for a bass line. The notation includes a treble clef, a key signature of one flat, and a tempo marking of 160. The notation is marked with *mf* and *col legno*.

Handwritten musical notation for the first line of the song. It begins with a treble clef and a key signature of one flat (B-flat). The melody consists of the following notes: G4 (quarter), A4 (quarter), B-flat4 (quarter), A4 (quarter), G4 (quarter), F4 (quarter), E4 (quarter), D4 (half). The line ends with a double bar line and a fermata over the final D4 note.

[illegible]

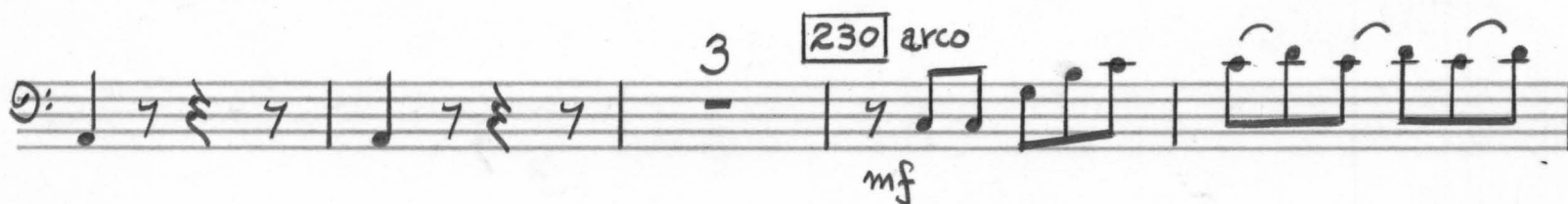
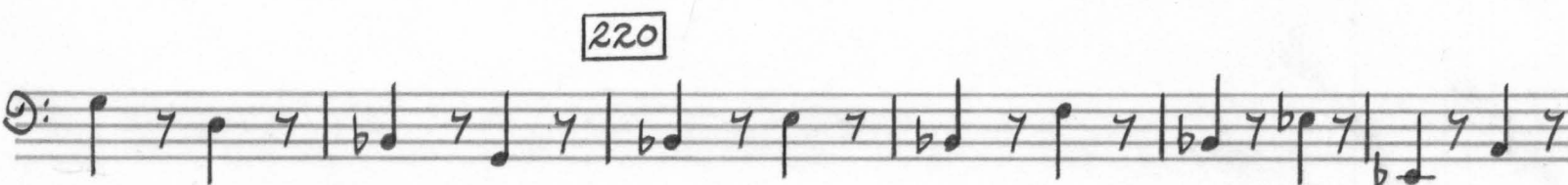
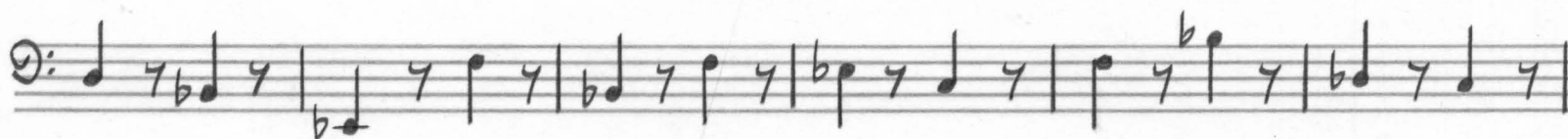
V.S.

13.

'cello

D

♩ = 100 modo ord.





Handwritten musical score for cello, measures 240-290. The score is written on ten staves, each beginning with a bass clef and a common time signature (C). The notation includes various musical symbols such as notes, rests, accidentals, and dynamic markings.

Measures 240-249: Measure 240 begins with a boxed measure number '240' and the instruction 'pizz'. Measure 241 contains a boxed 'F' above the staff. Measure 242 has a first ending bracket '1' above it. Measure 243 has a first ending bracket '1' above it. Measure 244 has a first ending bracket '1' above it. Measure 245 has a first ending bracket '1' above it. Measure 246 has a first ending bracket '1' above it. Measure 247 has a first ending bracket '1' above it. Measure 248 has a first ending bracket '1' above it. Measure 249 has a first ending bracket '1' above it.

Measures 250-259: Measure 250 begins with a boxed measure number '250'. Measure 251 has a first ending bracket '1' above it. Measure 252 has a first ending bracket '1' above it. Measure 253 has a first ending bracket '1' above it. Measure 254 has a first ending bracket '1' above it. Measure 255 has a first ending bracket '1' above it. Measure 256 has a first ending bracket '1' above it. Measure 257 has a first ending bracket '1' above it. Measure 258 has a first ending bracket '1' above it. Measure 259 has a first ending bracket '1' above it.

Measures 260-269: Measure 260 begins with a boxed measure number '260'. Measure 261 has a first ending bracket '1' above it. Measure 262 has a first ending bracket '1' above it. Measure 263 has a first ending bracket '1' above it. Measure 264 has a first ending bracket '1' above it. Measure 265 has a first ending bracket '1' above it. Measure 266 has a first ending bracket '1' above it. Measure 267 has a first ending bracket '1' above it. Measure 268 has a first ending bracket '1' above it. Measure 269 has a first ending bracket '1' above it.

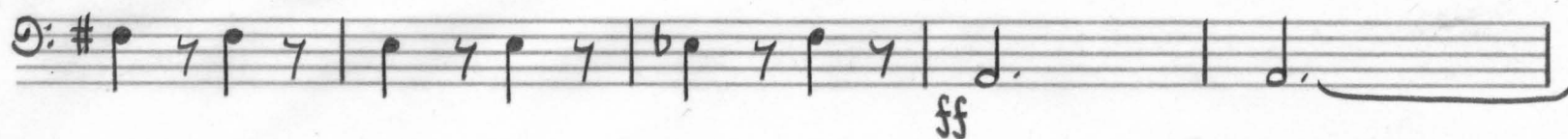
Measures 270-279: Measure 270 begins with a boxed measure number '270'. Measure 271 has a first ending bracket '1' above it. Measure 272 has a first ending bracket '1' above it. Measure 273 has a first ending bracket '1' above it. Measure 274 has a first ending bracket '1' above it. Measure 275 has a first ending bracket '1' above it. Measure 276 has a first ending bracket '1' above it. Measure 277 has a first ending bracket '1' above it. Measure 278 has a first ending bracket '1' above it. Measure 279 has a first ending bracket '1' above it.

Measures 280-289: Measure 280 begins with a boxed measure number '280'. Measure 281 has a first ending bracket '1' above it. Measure 282 has a first ending bracket '1' above it. Measure 283 has a first ending bracket '1' above it. Measure 284 has a first ending bracket '1' above it. Measure 285 has a first ending bracket '1' above it. Measure 286 has a first ending bracket '1' above it. Measure 287 has a first ending bracket '1' above it. Measure 288 has a first ending bracket '1' above it. Measure 289 has a first ending bracket '1' above it.

Measures 290-299: Measure 290 begins with a boxed measure number '290'. Measure 291 has a first ending bracket '1' above it. Measure 292 has a first ending bracket '1' above it. Measure 293 has a first ending bracket '1' above it. Measure 294 has a first ending bracket '1' above it. Measure 295 has a first ending bracket '1' above it. Measure 296 has a first ending bracket '1' above it. Measure 297 has a first ending bracket '1' above it. Measure 298 has a first ending bracket '1' above it. Measure 299 has a first ending bracket '1' above it.

Dynamic markings include *f*, *mf*, *ff*, *fff*, *p*, *arco*, and *pizz*. A boxed 'F' is present in measure 241. A first ending bracket '1' is present in measures 242-249, 252-259, 262-269, 272-279, 282-289, and 292-299. A first ending bracket '2' is present in measures 245-249, 255-259, 265-269, 275-279, 285-289, and 295-299.

arco



ff



mute

300

3

poco rit.

poco meno mosso

♩ = 90

mute



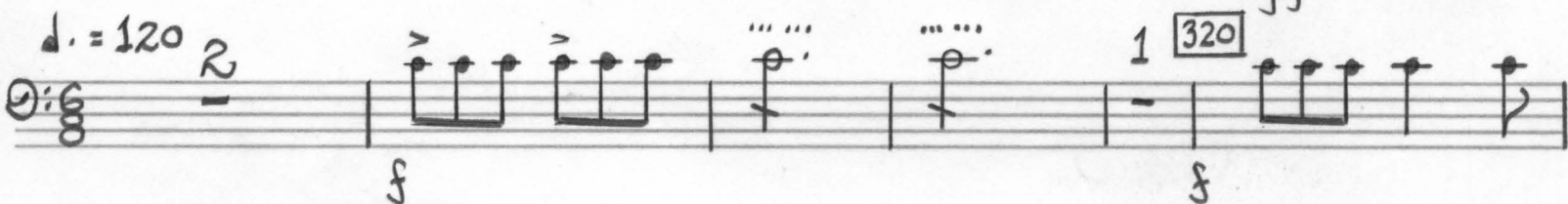
p

310

accel...



1



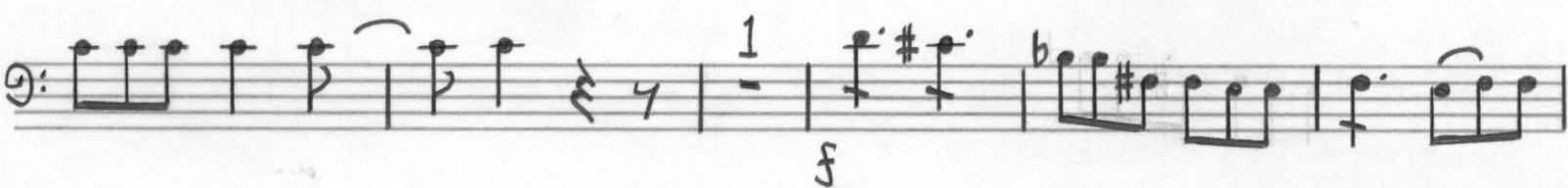
♩ = 120

2

pp

320

1



f



330

1

2



f



pizz

2

arco

f

f

ff

fff

