

# OVERTURE TO THE VIRGINIAN VOYAGE

**Bassoon 1**

**WALTER ROSS**

Bassoon I

OVERTURE TO THE VIRGINIAN VOYAGE

Walter Ross

Festivo  $\text{♩} = 108$

9 10 10 20 1 A horns + tuba 9 30 3 'CELLI 3 legato

1 40 1 legato mf 6 50 3 B p

mp 60 9 70 6

mp 80 C 8

90 10 100 6 D strings 4 110 10 120 6 E Animato  $\text{♩} = 108$  (l'istesso tempo) 130 10 140 10

150 str. pizz. F 160 2 3 4 5 6 7

170 1 G 1 w.w. 180 1 4 f

190 1 200 2 4

H 4 210 9 220 8

230 10 240 7 I trps. 3 250 9

2.

W.W. 1

260 270 280 J 290 300 310 320 330 L 340 350 360 370 380 390 400 410 N Horns 420 430 440 450 460 470 480 490

f

mf

cresc. ff

muted brass

poco accel. M  $\text{♩} = 120$

strings 1

harp celli

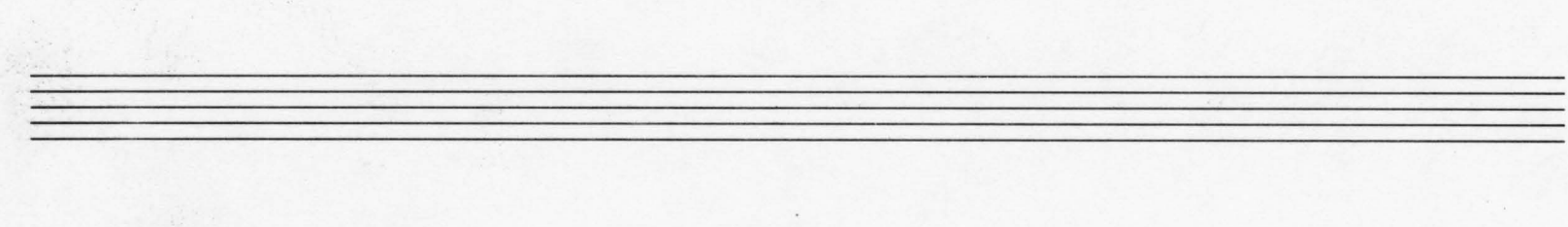
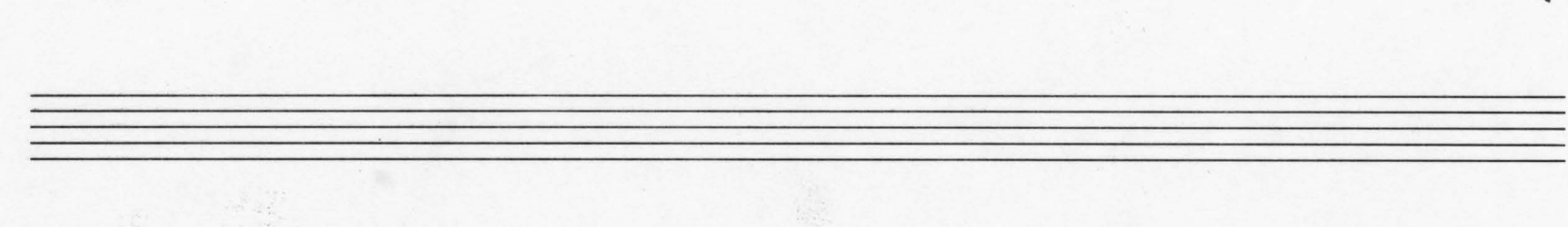
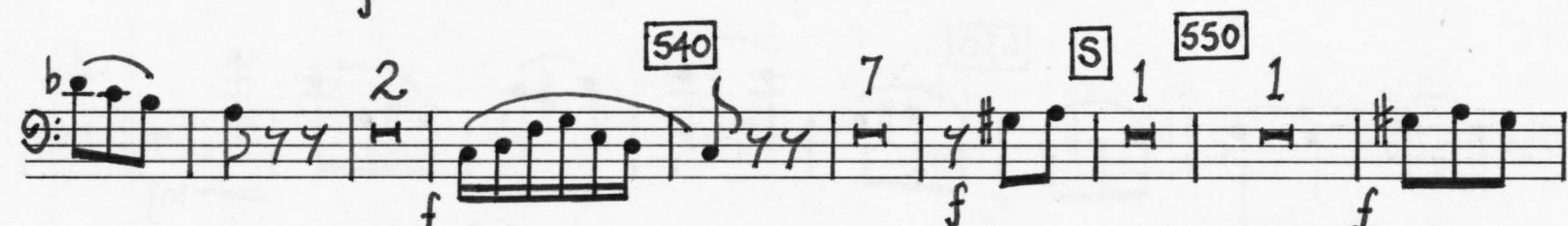
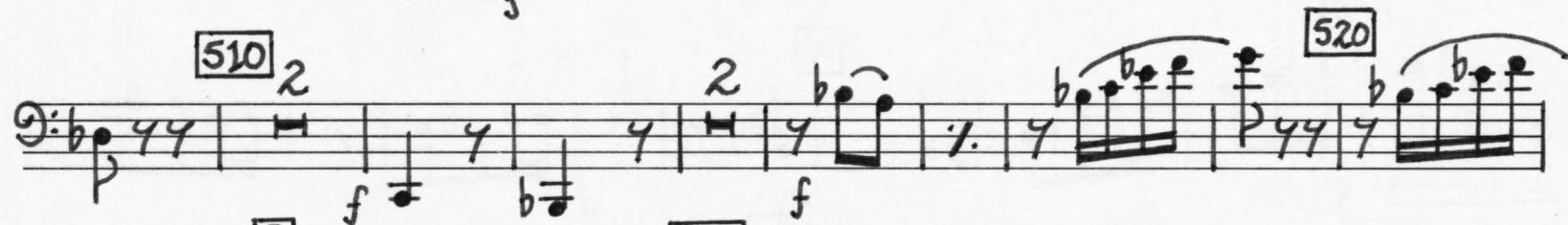
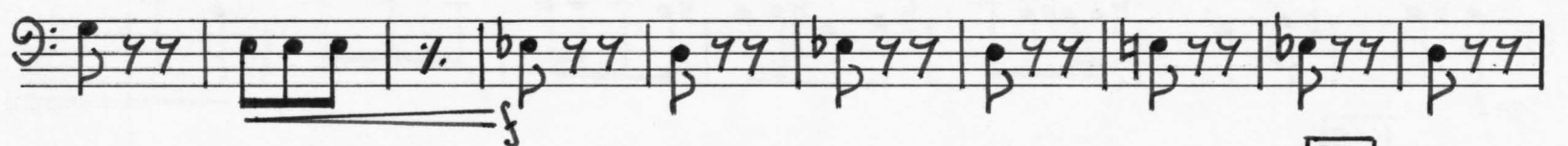
rit. poco apoco

Tempo 1<sup>o</sup>  $\text{♩} = 108$

p

mf

500 Q



V.S.P.D.Q.



4.

Handwritten musical score for a single melodic line, likely for a clarinet, spanning six staves. The notation includes various musical symbols such as notes, rests, and dynamic markings.

Staff 1: *mf* [610] *f* [W] 1 *f*

Staff 2: [620] 1 [X] *f*

Staff 3: [630] 4 *mf*

Staff 4: [Y] 1 [640] 9 [Z] 1 [650] 8 *clarinet* [660] 2 3 [Aa] 1 *f*

Staff 5: 1 *f* 1 *f* *ff*

