

# OVERTURE TO THE VIRGINIAN VOYAGE

**Bassoon 2**

**WALTER ROSS**

# Bassoon II

## OVERTURE TO THE VIRGINIAN VOYAGE

Walter Ross

Festivo  $\text{♩} = 108$

9 10 10 20 1 A horns tuba 30 3 'celli 3 1st 2 40 1 1st 9

50 3 B 1st 60 70 6 1st 80 C

6 90 100 D 110 120 E Animato  $\text{♩} = 108$  (istesso tempo) mp pp str. pizz. 130 140 150

F 160 2 3 4 5 6 7

170 1 G w.w. 180 1 4 1st 3 190 6

200 2 4 7 2 3 210 H 9

220 8 230 10 240 7 I 250 9 w.w. 260 8

270

J 280 3 7

V.S.

2.

290

mf

300

310

320 330 340

2 10 7 3 6

cresc. ff

350

4 1

360

4 5 4 M 1

370 380 390 400 410 420 430 440

10 10 10 10 9 1 10 10 2 7

N Horns

cell

450

3

460

2 1 9 470 1

rit. al

Tempo 1<sup>o</sup> ♩ = 108 f

P 1<sup>st</sup>

8 480 2 490 6

p

500 Q

mf

510 2 2

520

7 [R] 1



530

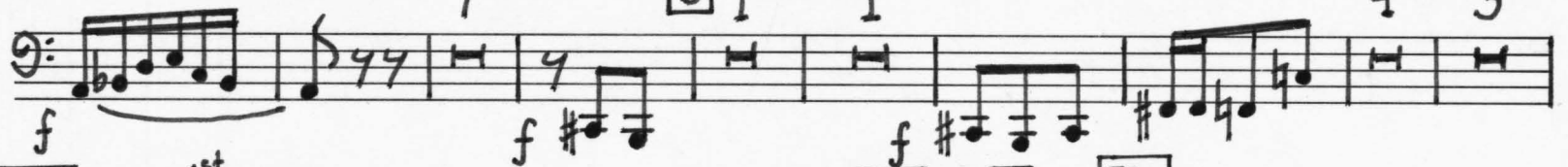


540

[S] 1

550 1

4 [T] 3



560

5

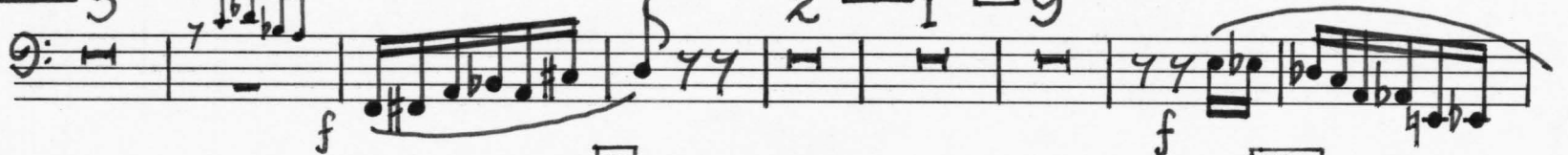
1st

2

570 1

[U] 9

580



[V] 1

590



600

2



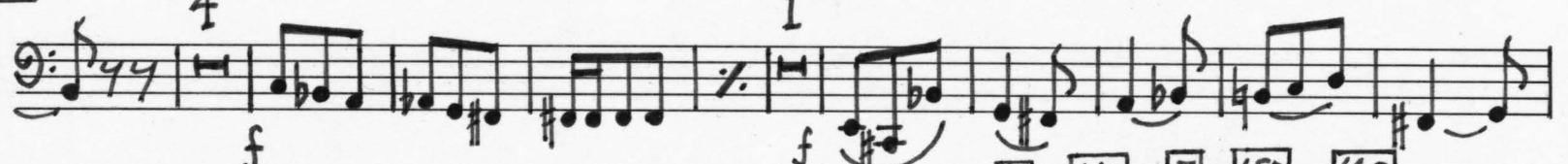
610



[W]

620

[X] 1



630

[Y] 4

640 1

[Z] 9

650 1

660 10



[Aa] 3

5

