

OVERTURE TO  
THE VIRGINIAN VOYAGE

Viola

WALTER ROSS

## Viola

## OVERTURE TO THE VIRGINIAN VOYAGE

Walter Ross

Festivo  $\text{♩} = 108$ 

9 10 10 20 1 A horns tuba 9 30 2

40

50

2

B 4 60

70 2

80 2 C

90

1

100

1 3

*mf*

*p*

*pp*

*mf*

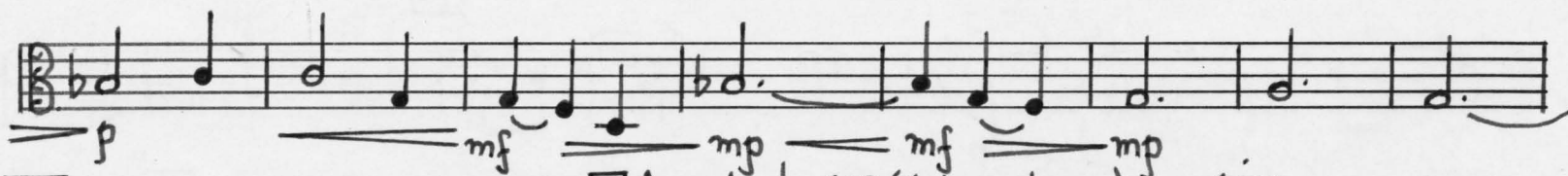
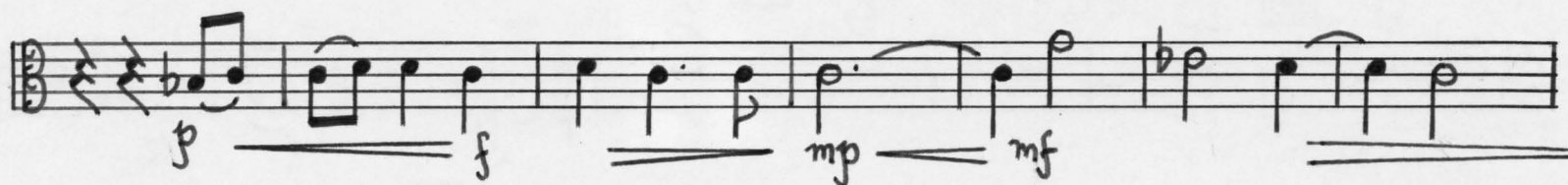
*mp*

*f*

*p*

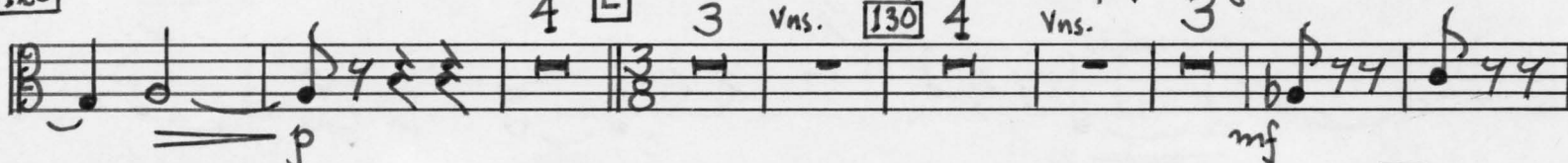
D

110



120

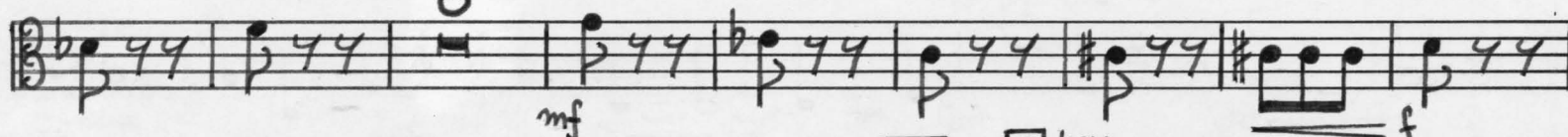
4 **E** Animato  $\text{♩} = 108$  (l'istesso tempo) 3 Vns. 130 4 Vns. 3 pizz.



140

150 pizz.

F



160

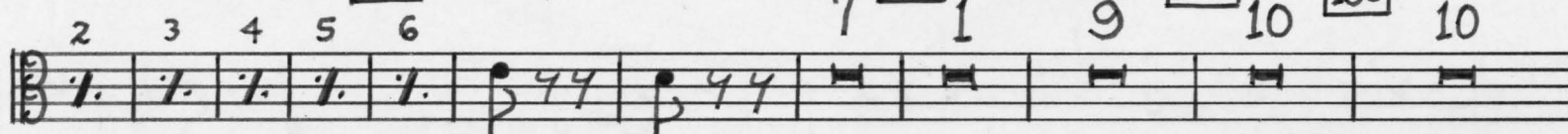
170

G horn celli

180

190

10



200

brass

210

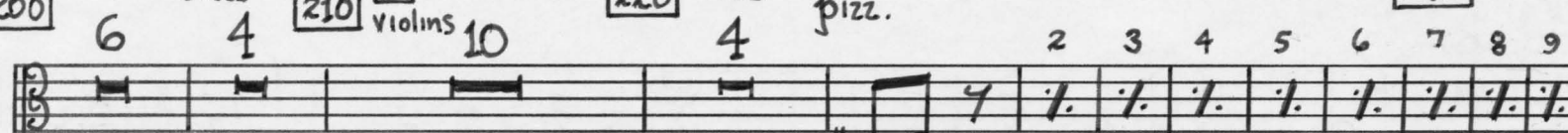
H Violins

220

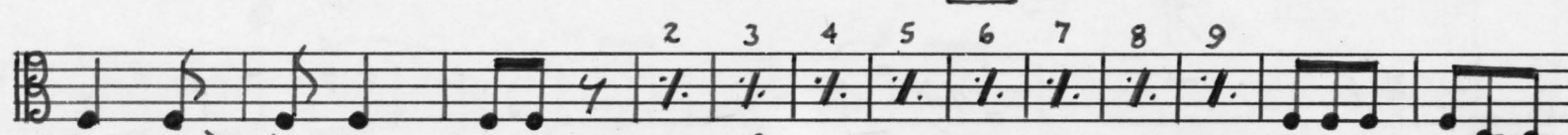
brass

pizz.

230



240



I

250

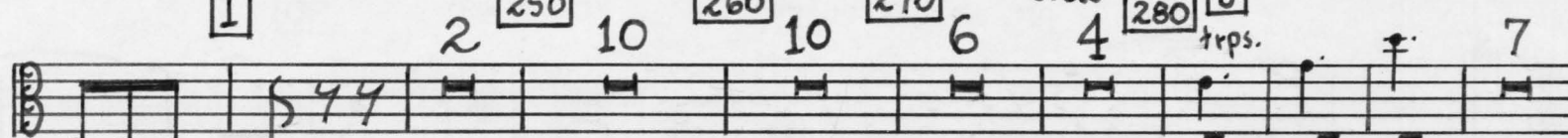
260

270

brass

280

J trps.



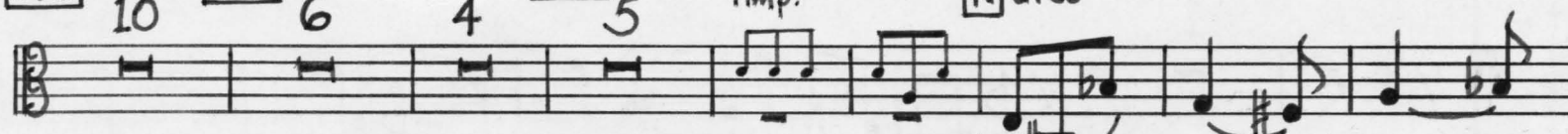
290

300

310

timp.

K arco



320





330 *f* *mf*

*L* non vib.

340

*p* *pp*

350 *w.w.* *muted brass* *poco accel.* *M* *lyrico* *♩ = 120*

360 *f*

370

380 *f*

390

400 *mf* *cresc.*

410 *f* *mf*

*N* 420 *alternate bows*

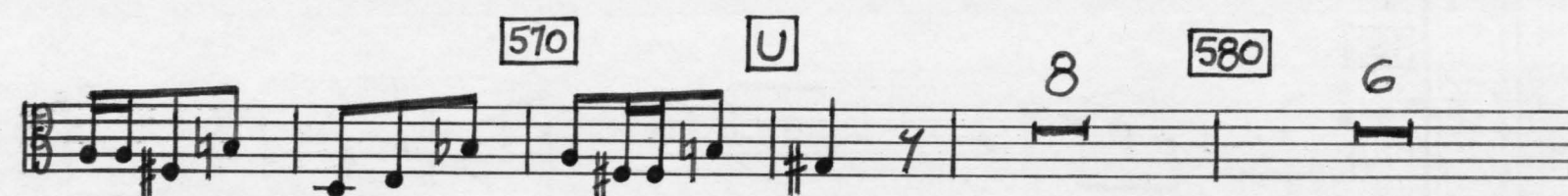
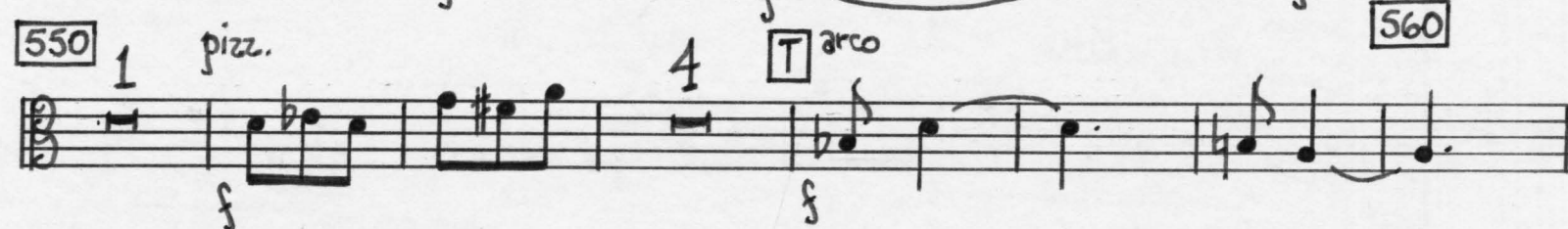
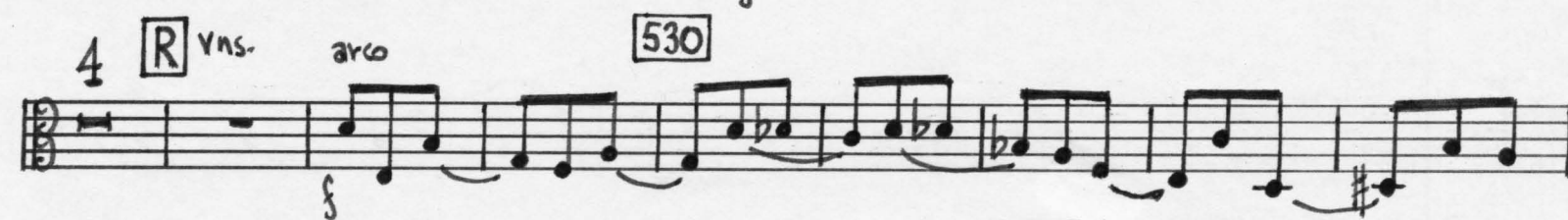
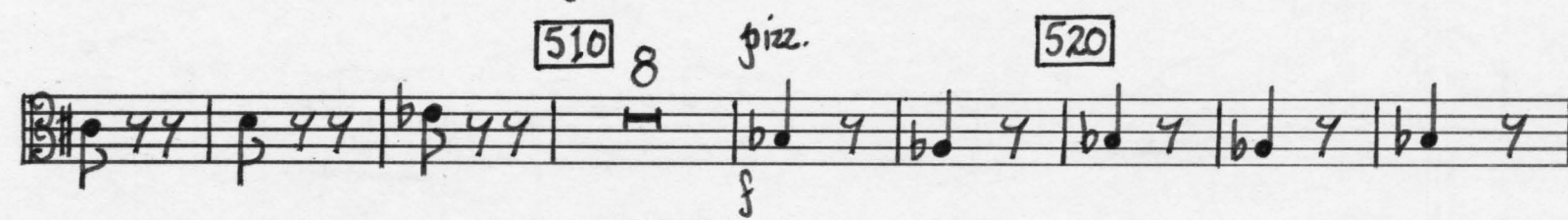
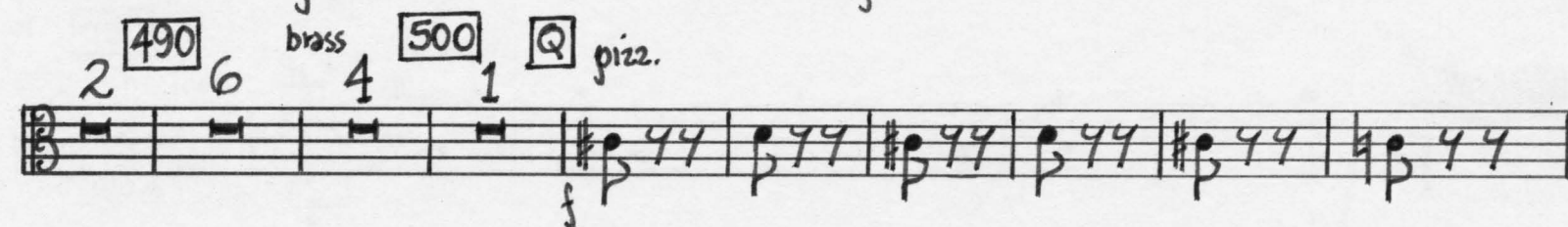
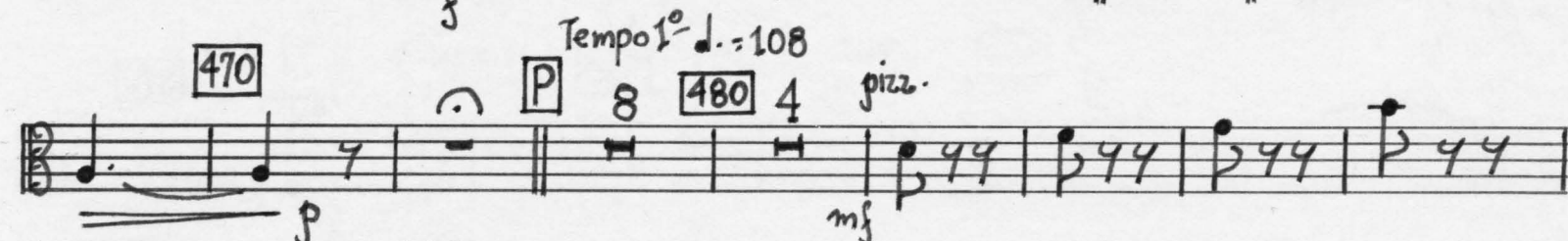
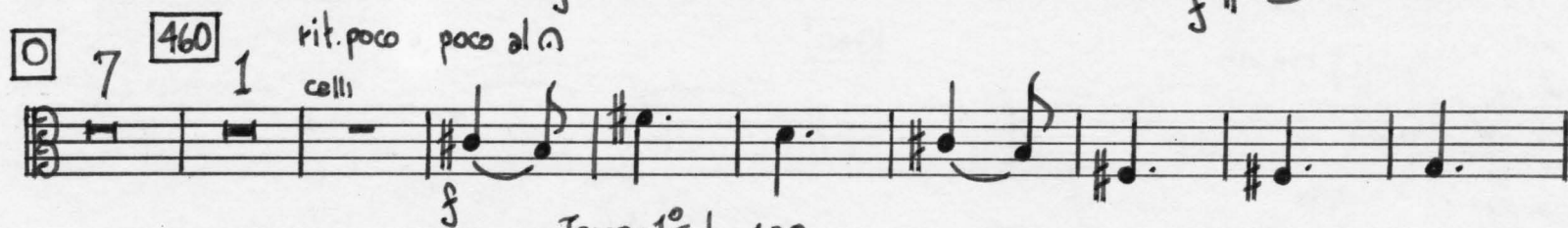
*f* *mp* *f*

430

4.

[440]

[450]





V pizz.

590

