

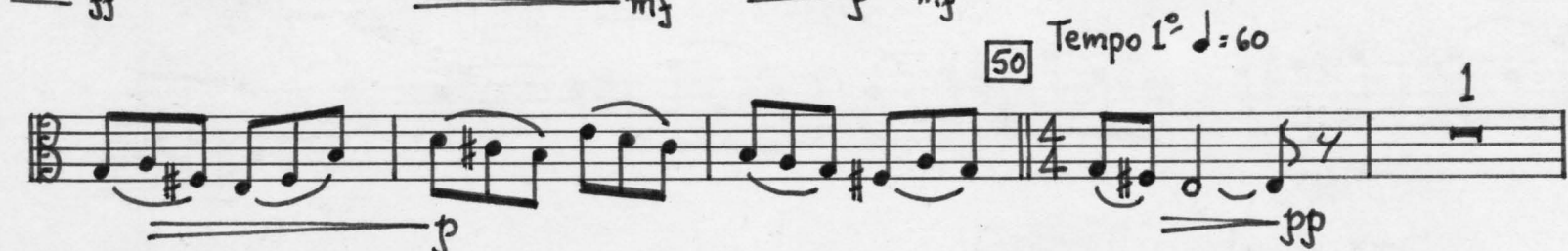
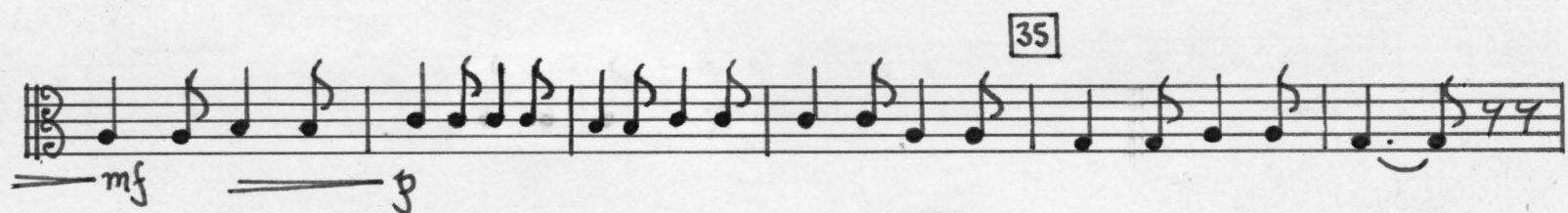
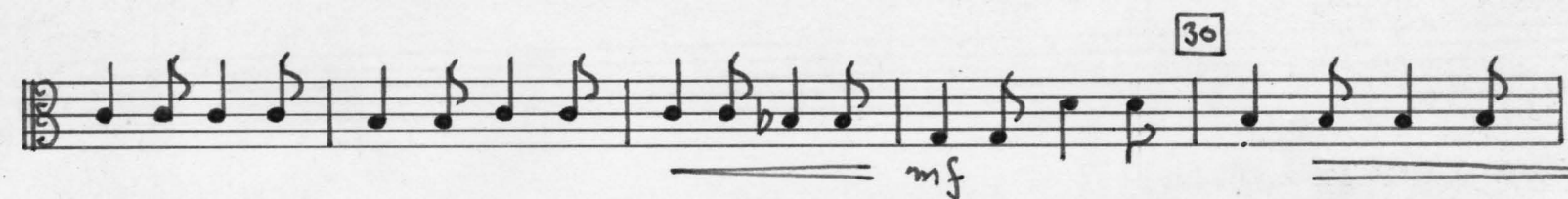
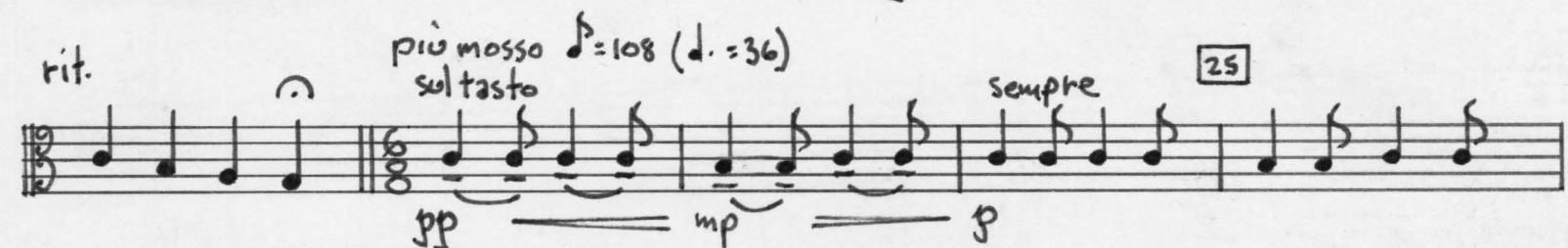
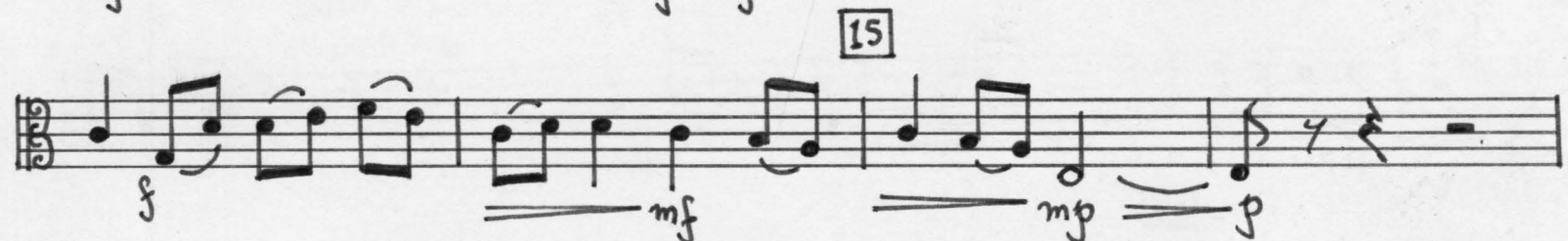
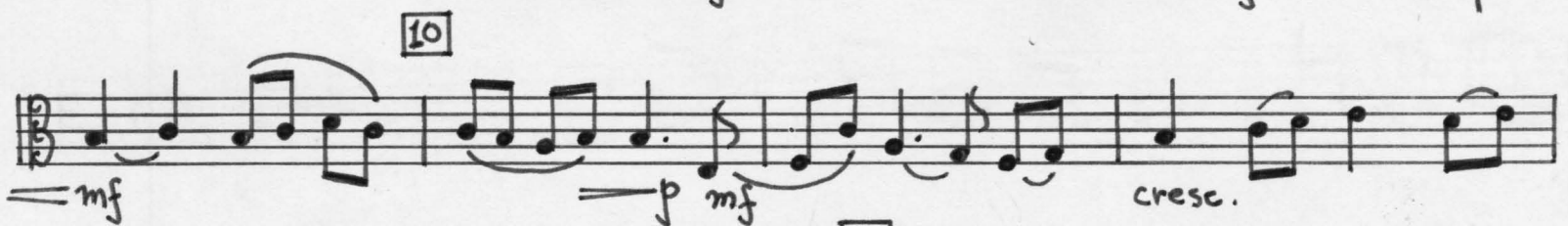
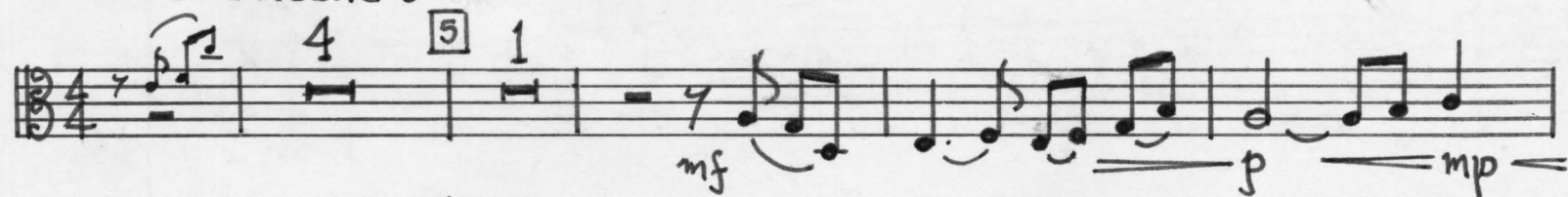
# SYMPHONY NO. 2

Walter Ross  
1994

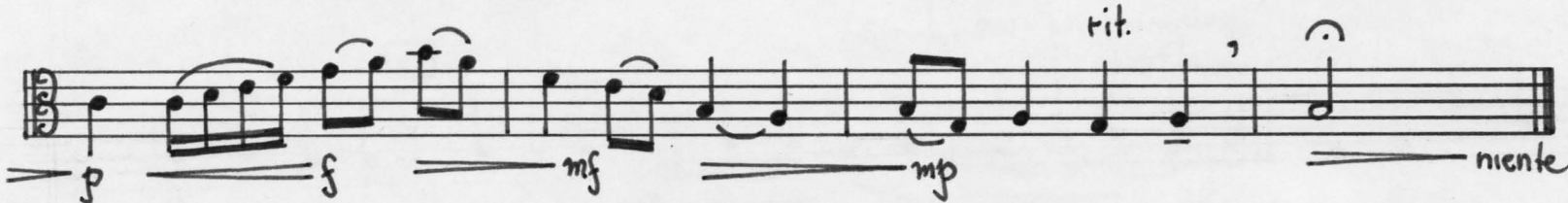
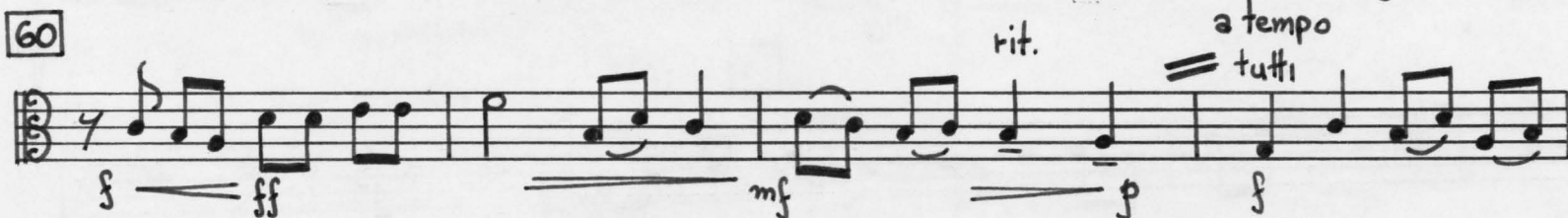
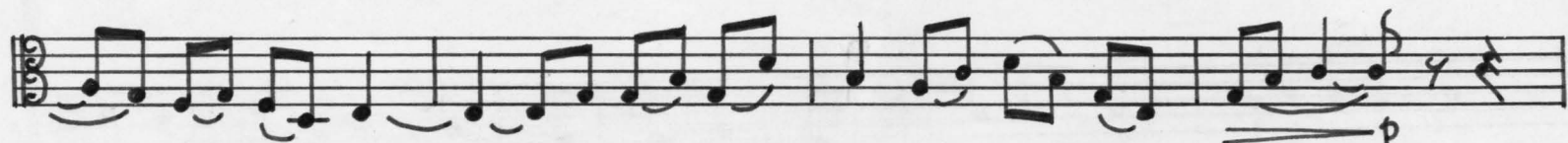
**Viola**

VIOLA  
Andante cantabile ♩ = 60

I



2.



## II

Allegro capriccioso  $\text{♩} = 84$  (in 1)

50

*mf* *p* *pp* *mp*

*mf*

60

2

*f* *f*

70

80

*mf* *p* *mf* *mp* *p* *mf*

90

*f* *p*

100

*pp*

solo

1 110 7 solo

*mf* *p*

tutti

1 130 4

*p* *mp*

4.

140

150

160

170

3 arco

180

190

200

210

220

1

2.

3

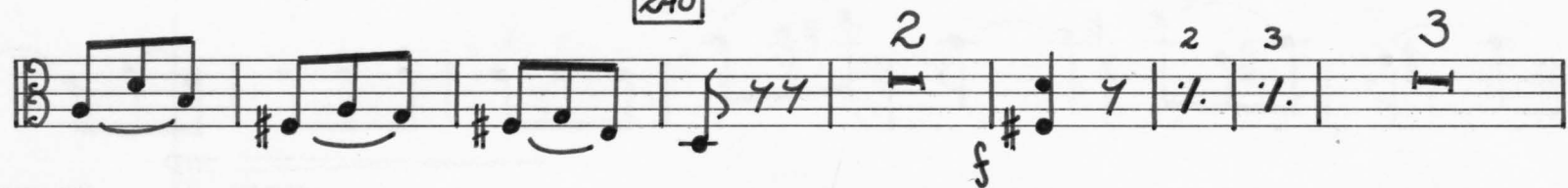
4

**S**

230



240



250



260



270



280



290



300



310



320



3

6.

340

350

### III

Andante grazioso ♩=90

10

20

30

8

40

cantabile

50 *rit.*

*a tempo* *rit.* *mf* *mp* *poco più mosso d. = 60 (in 1)* *animato*

60 *p* *pp* *mf*

70

80 *mf* *p* *mf* *p* *mp* *p*

3 *rit.* *animato d. = 60 (in 1)* *90*

*p*

1 *sub. f* *mf*

100 *mp* *110*

*mf* *rit.* *f* *120* *Tempo 1° d. = 90* *Andante grazioso* *2*

*mf* *mp* *p*

mf p

[130]

mp mf

[140]

mp mf p mf

rit...

[150]  $\text{♩} = 72$

meno mosso  $\text{♩} = 60$

3

[160] solo

mp rit.

p niente

## IV

Allegro con spirito  $\text{♩} = 132$

(tutti)

9 [10] 2 1 1 1

f f f

[20]

[30]

cresc.

40

*ff*

*poco rit. . .*

50  $\text{♩} = 112$   
*espressivo*

*mf*

60

70 4 2

*p* *mp*

80

*p* *mp*

90

*f* *mf* *mp*

100

*p* *mp*

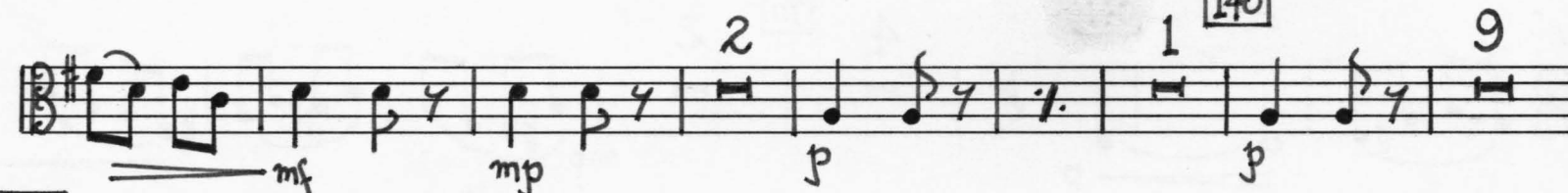
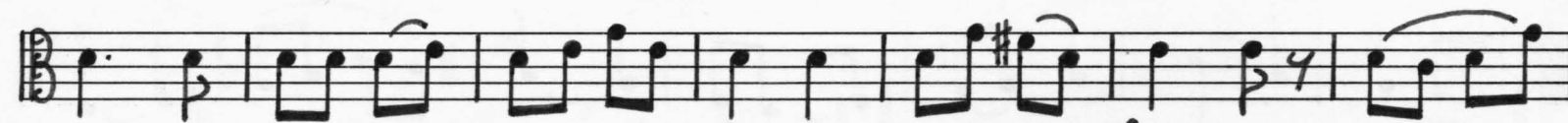
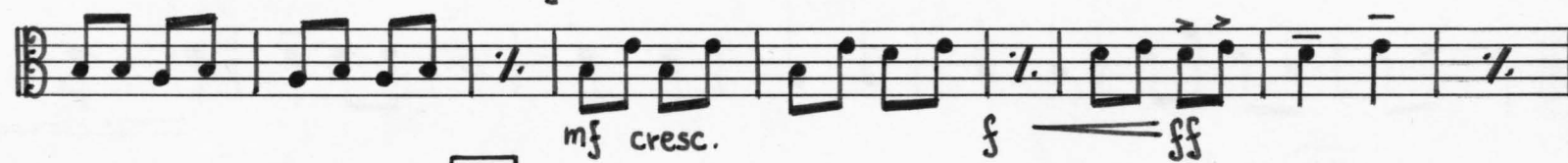
10.

poco accel. . .

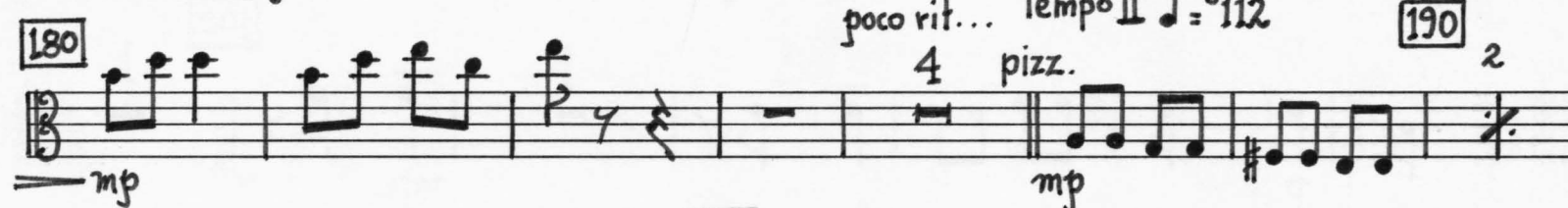
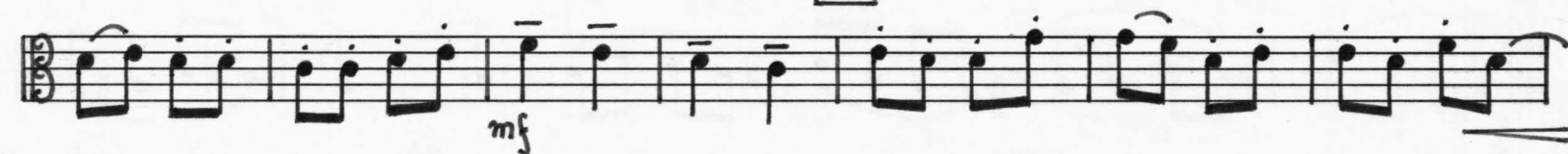
♩ = 120



poco accel. . .

Tempo 1<sup>o</sup> ♩ = 132

150 6 4 160



poco rit... Tempo II ♩ = 112

4 pizz.



210



220



230



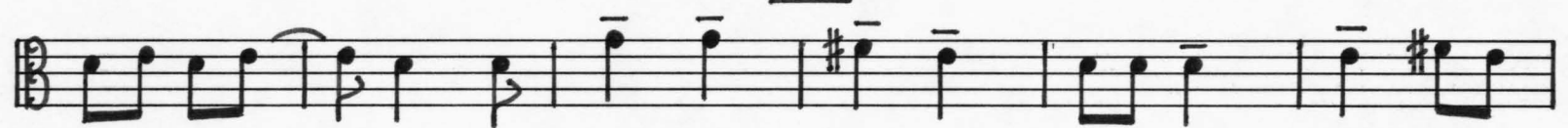
accel.



240 Tempo 1° ♩ = 132



250



260



feroce



accel. al fine

