

TROMBONE
CONCERTO
Nº 2

WALTER ROSS

Bassoon I

BASSOON I

TROMBONE CONCERTO No 2

WALTER ROSS

HORNS, TRBS.

Poco Adagio $\text{♩} = 72$ 8 2 3 10 20 9

ALLEGRO I $\text{♩} = 108$ ENERGICO 10

[A] f

[B] 40 4 f

50 f

60 10 3 ff

70 f f p

80 9 3 1 f p

90 3 2 f

100 pp mf pp rit ... [E] TEMPO I $\text{♩} = 72$ 6

[F] TEMPO II $\text{♩} = 100$ 110 2 4 mf

BASSOON I

(120) 9 [G] 1 (130) 4

mf *f*

(140) *mf* *f* *mf* [H]

(150) 8 [I] 2 (160) 8 *f* [J] 2 (170) 10 (180) 3

[K] *rit...* *Tempo 1^a* *rubato* $\text{♩} = 72$ (190) 3

[L] *Più mosso* $\text{♩} = 112$ *f*

(200) *f* *sfz* *sfz*

(210) 7 *f* *f*

[M] (220) 5 [N] 4 *mf*

(230) *f*

ff 1

[illegible]

KING BRAND 1595 B'WAY, N.Y.

Bassoon I

Handwritten musical score for Bassoon I, measures 70 to 300. The score includes various musical notations, fingerings, and performance instructions.

Measures 70-79: Bassoon I part, measures 70-79. Includes fingerings (1, 7, 4, 5, 4), dynamics (f), and articulation (accents). Measure 70 has a circled 70. Measure 79 has a circled 90.

Measures 80-89: Bassoon I part, measures 80-89. Includes fingerings (2, 1, 10, 10, 10, 2), dynamics (f), and articulation (accents). Measure 80 has a circled 80. Measure 89 has a circled 130.

Measures 90-99: Bassoon I part, measures 90-99. Includes fingerings (8, 1, 8, 2), dynamics (f), and articulation (accents). Measure 90 has a circled 140. Measure 99 has a circled 160.

Measures 100-109: Bassoon I part, measures 100-109. Includes fingerings (4, 4, 1, 3), dynamics (mp), and articulation (accents). Measure 100 has a circled 170. Measure 109 has a circled 210.

Measures 110-119: Bassoon I part, measures 110-119. Includes fingerings (6, 10, 2, 8, 2), dynamics (mp), and articulation (accents). Measure 110 has a circled 180. Measure 119 has a circled 220.

Measures 120-129: Bassoon I part, measures 120-129. Includes fingerings (7, 2, 5, 10), dynamics (pp), and articulation (accents). Measure 120 has a circled 220. Measure 129 has a circled 230.

Measures 130-139: Bassoon I part, measures 130-139. Includes fingerings (1, 8, 4, 4, 10), dynamics (p), and articulation (accents). Measure 130 has a circled 240. Measure 139 has a circled 260.

Measures 140-149: Bassoon I part, measures 140-149. Includes fingerings (4, 3, 2, 3, 4, 5, 5), dynamics (mf), and articulation (accents). Measure 140 has a circled 270. Measure 149 has a circled 280.

Measures 150-159: Bassoon I part, measures 150-159. Includes fingerings (3, 2, 3, 4, 5, 5), dynamics (p), and articulation (accents). Measure 150 has a circled 290. Measure 159 has a circled 300.

V.S.

5. Bassoon I

Musical score for Bassoon I, measures 310 to 440. The score is written in bass clef with a key signature of one flat (B-flat). The tempo is marked *mf* (mezzo-forte). The score includes various musical notations such as slurs, ties, and dynamic markings (*f*, *ff*).

Key markings and measure numbers include:

- Measure 310: **P** (Piano), **(310)**
- Measure 320: **(320)**
- Measure 330: **Q** (Quasi), **(330)**, **R** (Ritardando), *w.w.* (with woodwinds)
- Measure 340: **(340)**
- Measure 350: **(350)**, **S** (Sforzando), **(360)**, **(370)**
- Measure 380: **(380)**
- Measure 390: **(390)**, **T** (Tutti), **(400)**
- Measure 410: **(410)**, **(420)** *obs.* (obscure)
- Measure 430: **U** (Uppercase), **(430)**
- Measure 440: **(440)**

The score concludes with a final measure marked **8**.

6.

③①

♩: #p p | 4p p̣ y#p | #p p | ḅp 4p p | p̣ḅp̣ḅp | ḅo Ṭ yẓ -

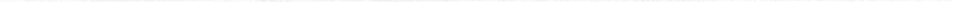
p f mf pp

1 [C] Allegro vivo d = 120 2 ④① 8 ⑤① str. pizz. 1

ff

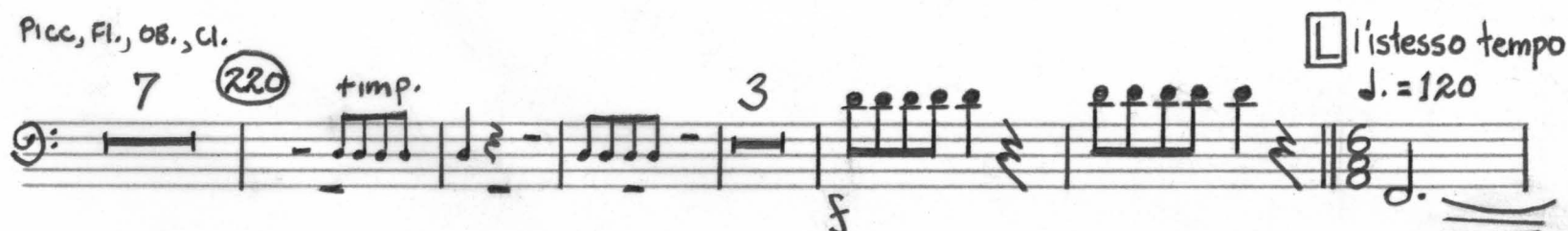
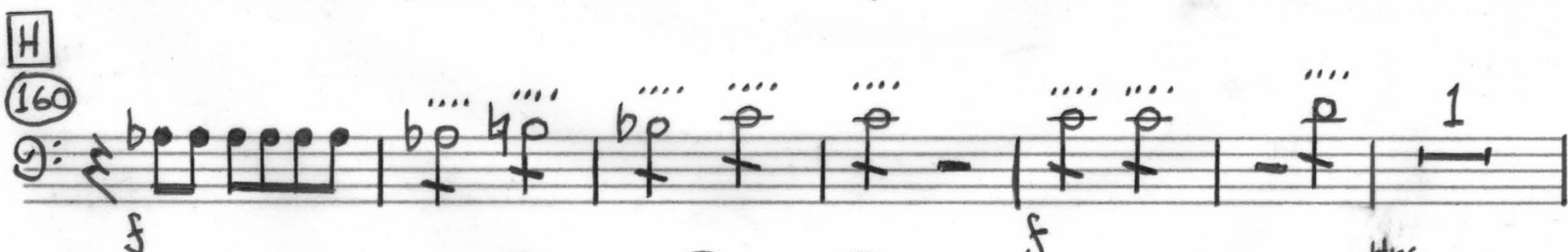
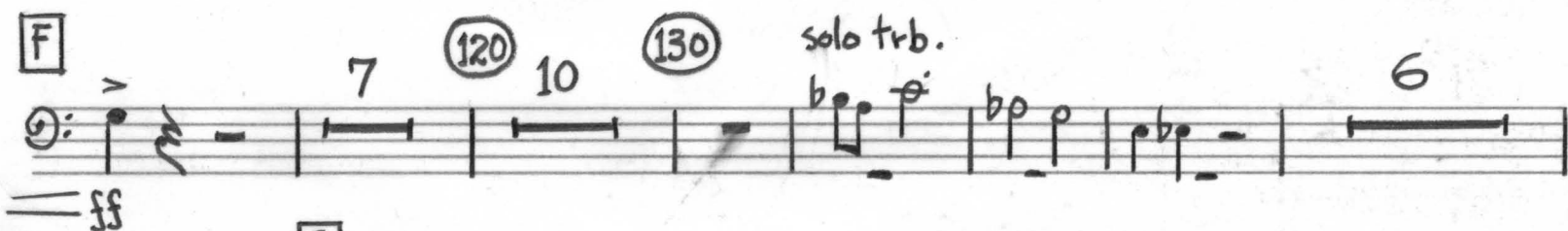
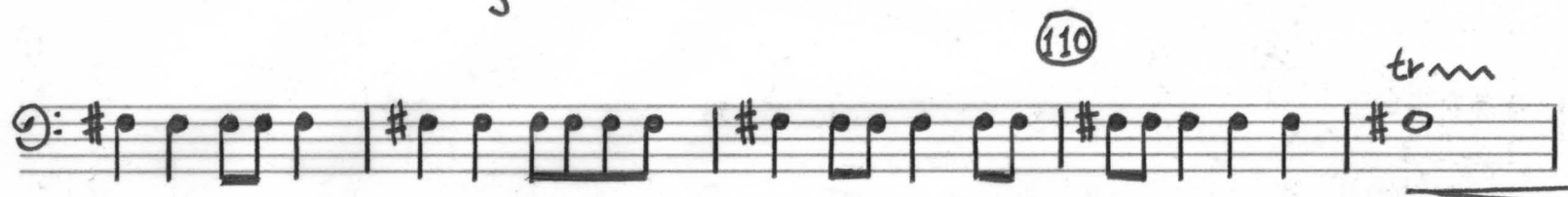
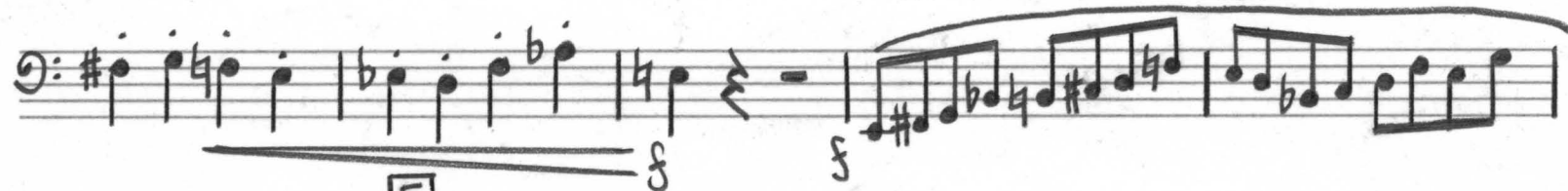
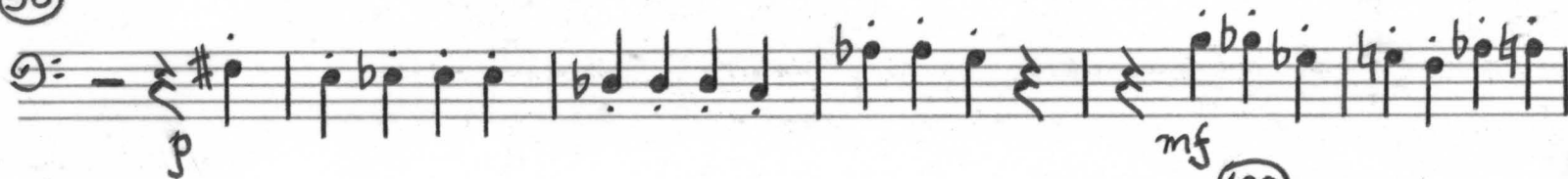
Handwritten musical score for three staves. The first staff starts with a boxed 'D' and a treble clef, featuring a melody with slurs and a dynamic marking 'mf'. The second staff continues the melody with a dynamic marking 'ff'. The third staff features a bass clef and a melody with slurs and a dynamic marking 'f'. The score includes various musical notations such as notes, rests, and fingerings.

4

⑨: 

7. Bassoon I

(90)



Picc., Fl., Ob., Cl.

□ *lo stesso tempo*
♩. = 120

230 10 240 10 250 5 [M] 5 260 10 270 9 [N] harp 1

280 1 5 [O] 1 290

[P] 1 2 1

300 [Q] 2

310

p *f* *sf* *sf* *fff*