

TROMBONE
CONCERTO
Nº 2

WALTER ROSS

Cello

CELLO

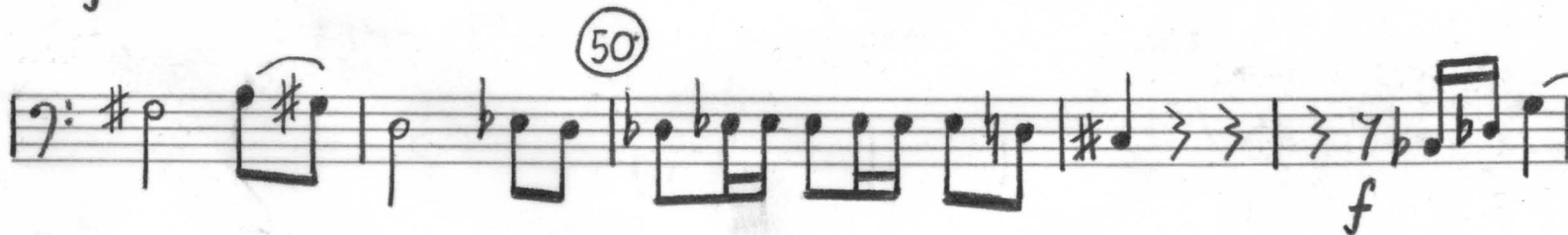
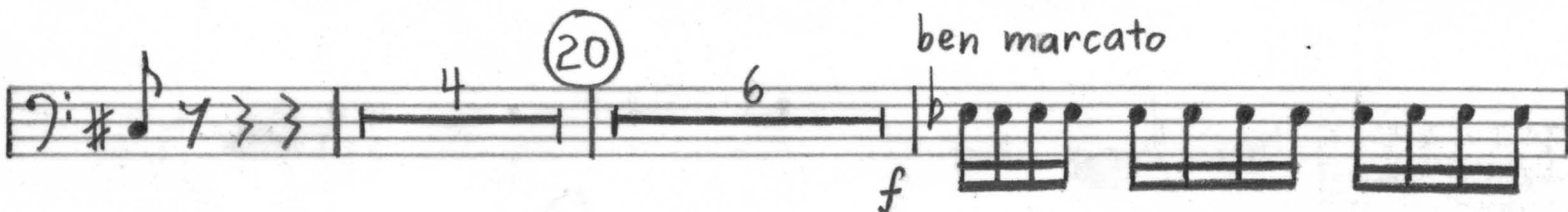
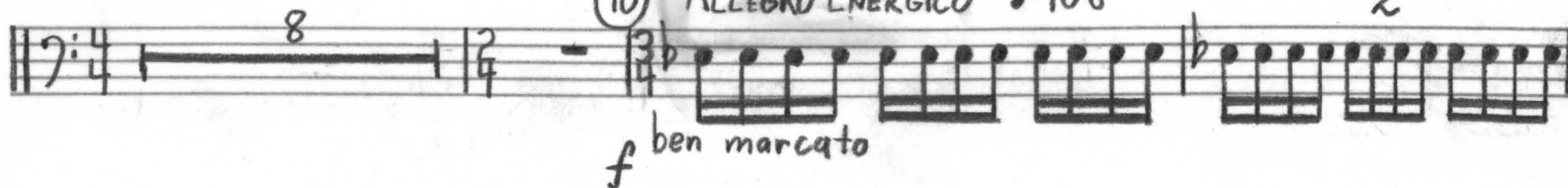
TROMBONE CONCERTO No 2

WALTER ROSS

Poco ADAGIO $\text{♩} = 72$

(10) ALLEGRO ENERGICO $\text{♩} = 108$

2



3 4 5

6 7 8

9 10 (70) 11

12 3 pizz. arco

f **D** f p

f p f

(80) 3 4 5

> mf

6 7 8

9 10 11

1 (90) 2 pizz. 7 (100) 1 arco

f **E** p

rit... TEMPO 1^o ♩ = 72

pp pp

3.

'CELLO

CELLO

[F] TEMPO II $\text{♩} = 100$ **(110)** 1 8 **(120)** 1 pizz. *p* **[G]** arco *p*

(130) *f* *mf* *mf*

(140) *f* *mf* **[H]** 3 1 pizz. arco *f*

(150) *ff* *f*

[I] *mf* **[J]** pizz. **(160)** 1 8 *f* **(170)** 2 *f*

(pizz.) *mf* *f* *mf* **[K]** *f*

(180) arco *mf* *p* *pp* TEMPO 1^o $\text{♩} = 72$ rubato

190

1

2

(3)

[L] *più mosso*
♩ = 112 *ben marcato*

f

2

3

4

200

sfz

210 *ben marcato*

f

7

2

3

[M] *pizz.*

1

f

220

1

f

[N]

3

arco

230

f

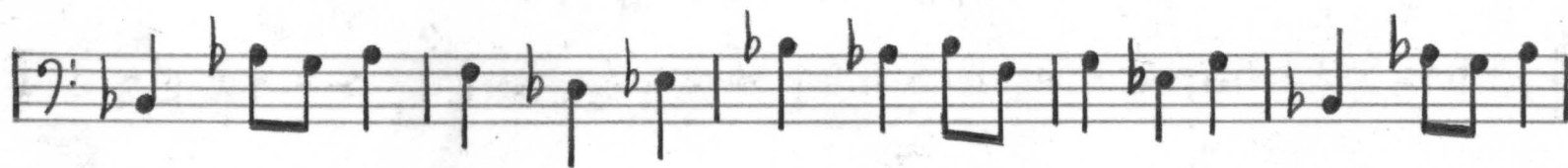
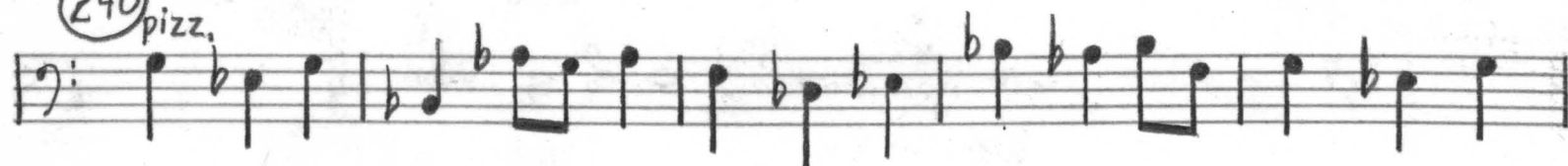
3

5.

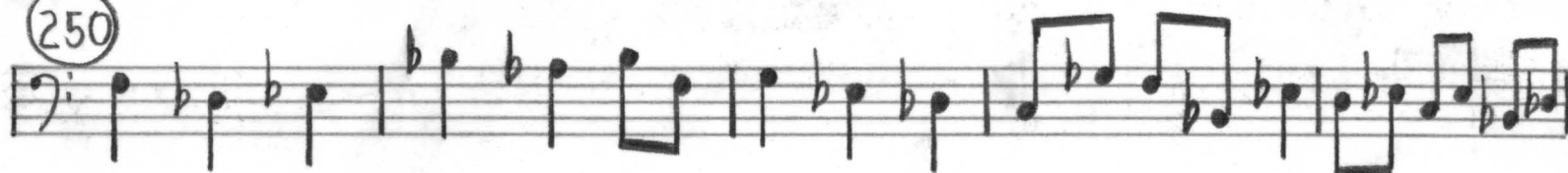
CELLO



(240) pizz.



(250)



3 [P]

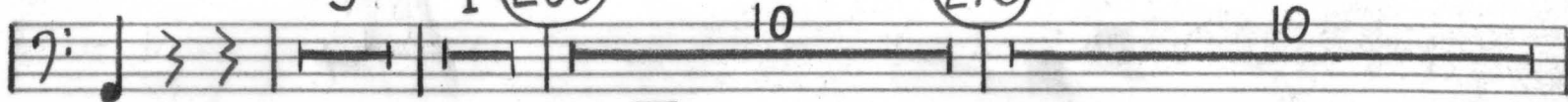
1

(260)

10

(270)

10



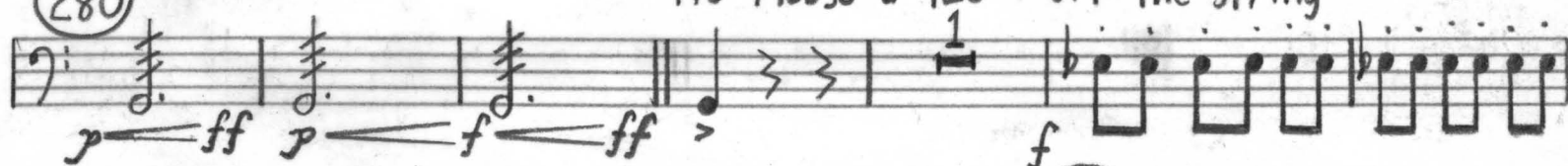
(280)

arco

Più Mosso $\text{♩} = 120$

off the string

2



p *ff*

p *f*

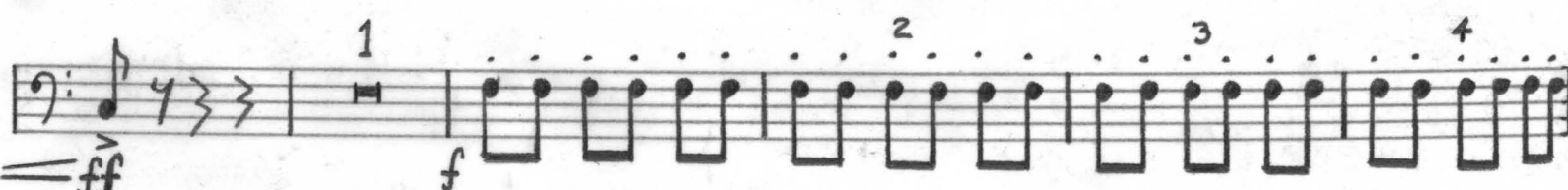
ff

f

(290)



mf



ff

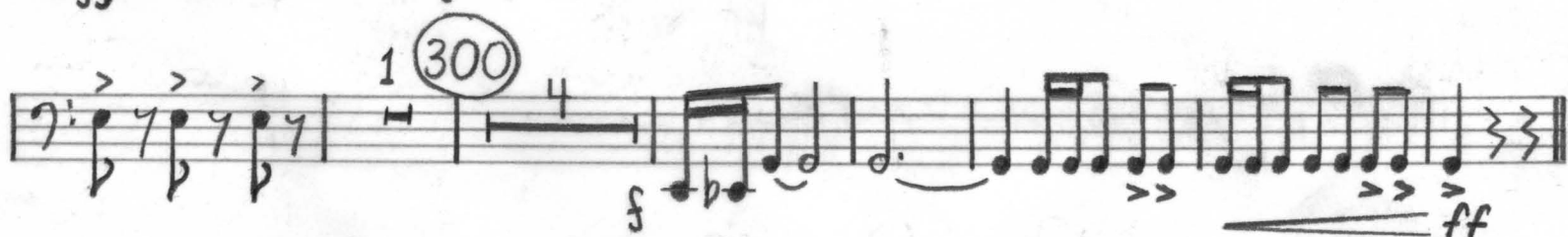
f

1

2

3

4



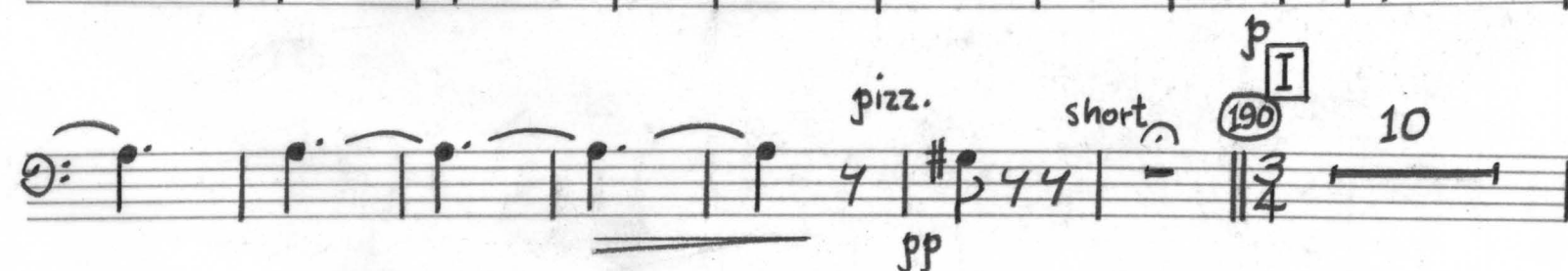
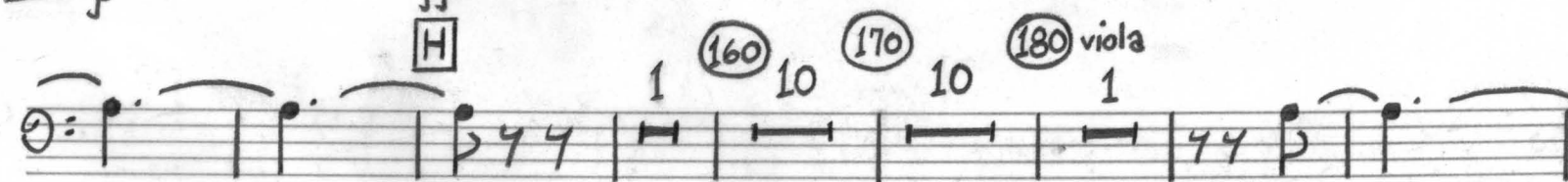
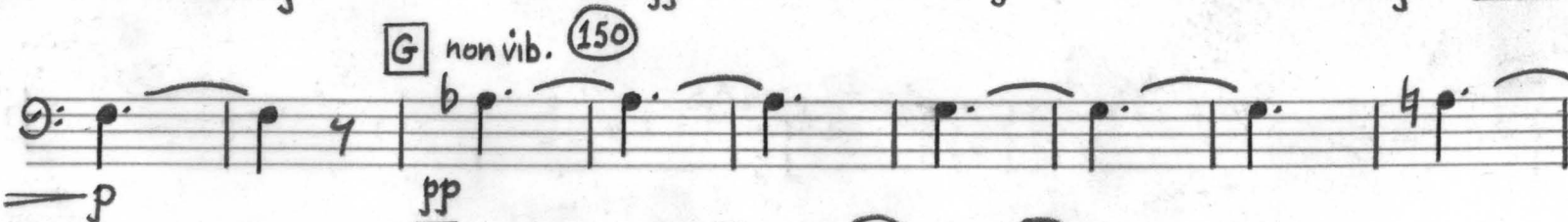
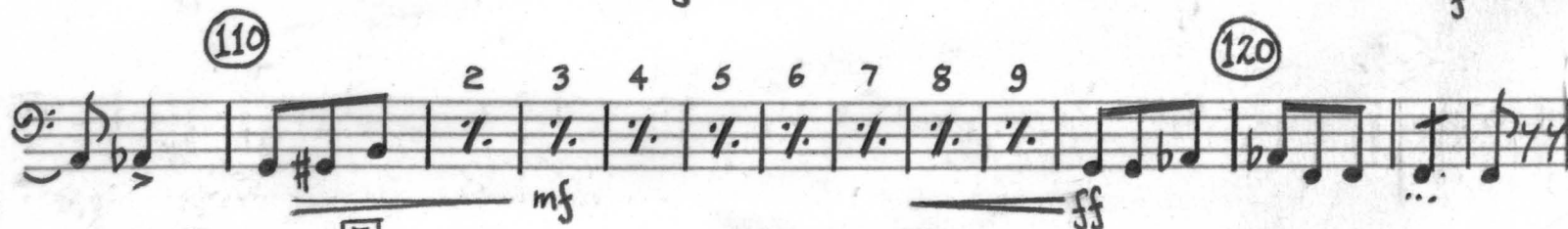
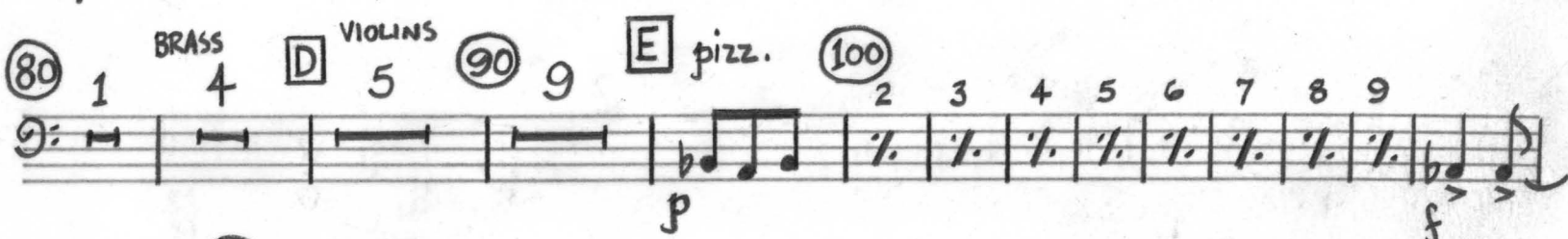
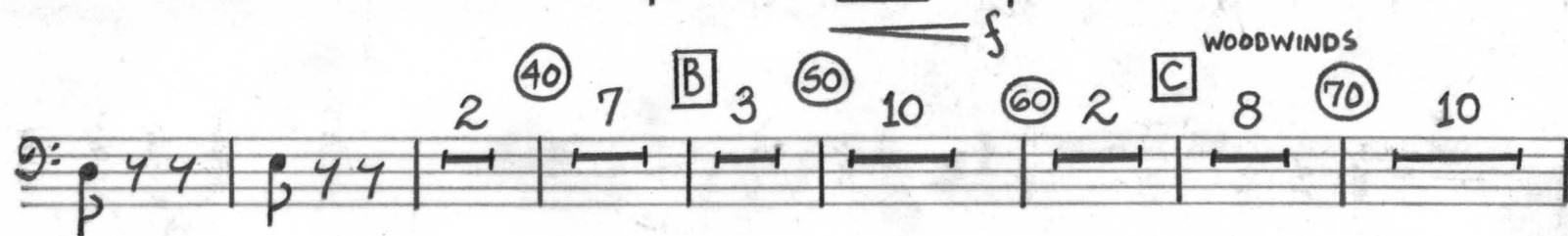
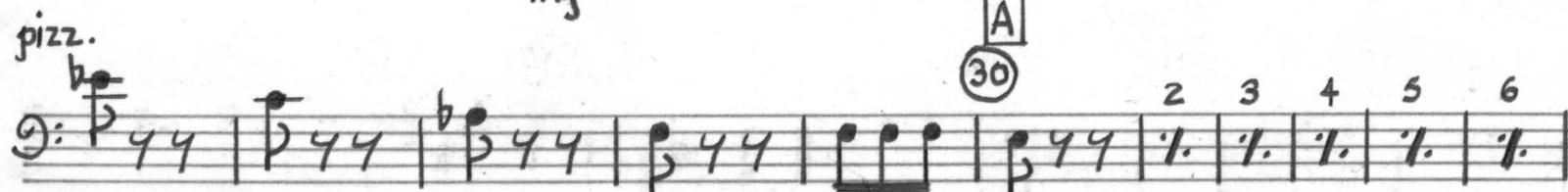
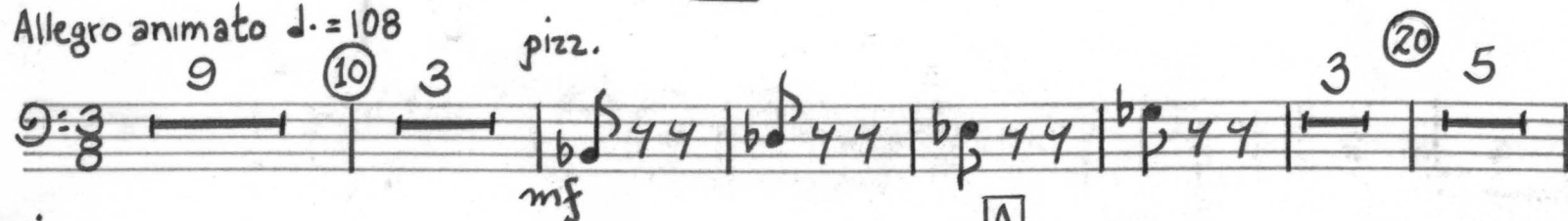
(300)

f

ff

Allegro animato $\text{♩} = 108$

pizz.



7. 'Cello

Handwritten musical score for a piece in G major, Op. 10, No. 1, by Frédéric Chopin. The score is written on ten staves, each with a lettered section marker (J, K, L, M, N, O) and a measure number in a circle. The notation includes various musical symbols such as notes, rests, accidentals, and dynamic markings (mf, p, pp, f). The piece concludes with a double bar line and a final measure marked '10'.

(290) 1 pizz. *mf* 5 (300) 8 [P] pizz. *f*

(310) 3

(320) 5 [Q] pizz. *f* (330) 3 [R] 2

arco (340)

2 (350) 5 pizz. *f* 2

pizz. (360) 4 [S] 6 (370) 10 (380) 10 (390) 3 [T] pizz. *mf*

(400) 2 3 4 5 6 7 8 9 10 11 cresc. *f* *ff*

(410) 2 3 4 5 6 7 8 9 10 11 *f* *ff*

(420) 9 [U] (430) arco *f*

(440) 2 3 4 1 2 cresc. *ff*

9. Cello

(450) V 4 1 460 5

f *f* *f*

(470) W 1 2 1 1

f *f* *ff*

Adagio $\text{♩} = 60$ A III

9 (10) 1 piccolo 7 div. 2 (20) 3 4 5 6

p

non div. B pizz. *pp*

1 (30) 5 pizz. C Allegro vivo $\text{♩} = 120$

pp *mf* *p* *pp* *f*

simile (40) 1 2 2

f *f*

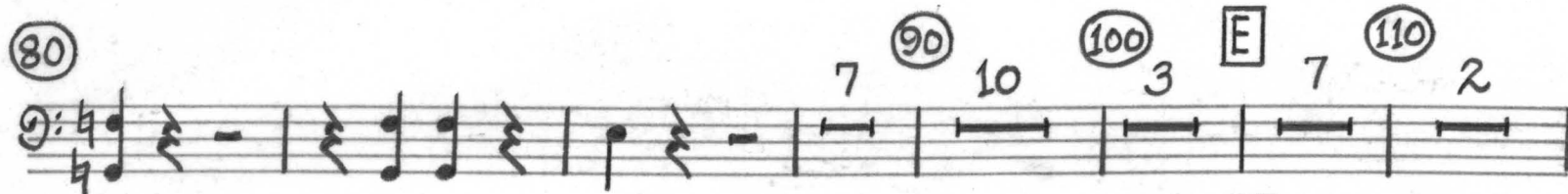
(50) D 6 (pizz.) (60) 2 3

f *f* *p*

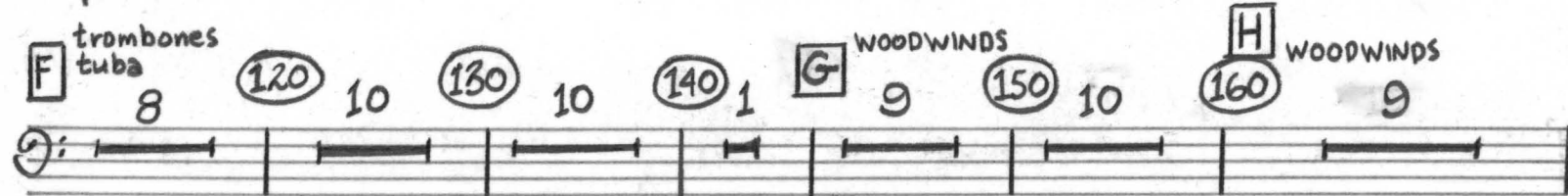
7 (70) 3 (pizz.) 2

f *f*

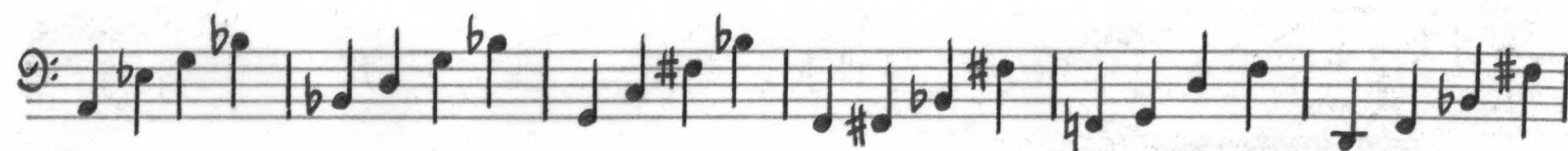
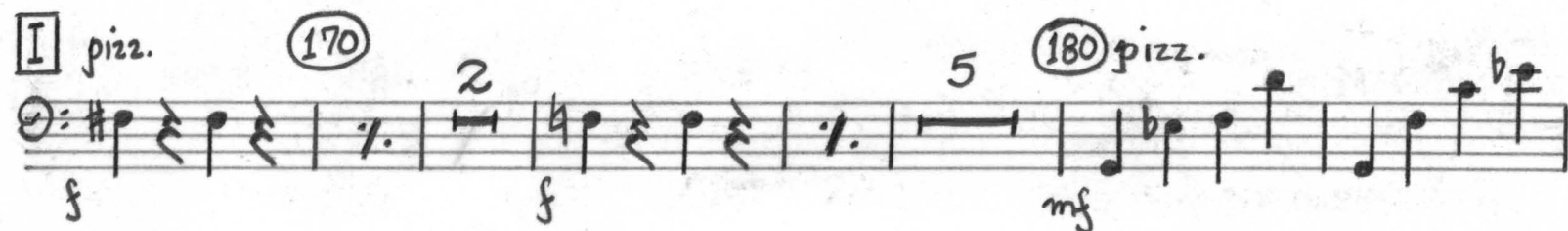
(80) 7 (90) 10 (100) 3 E 7 (110) 2



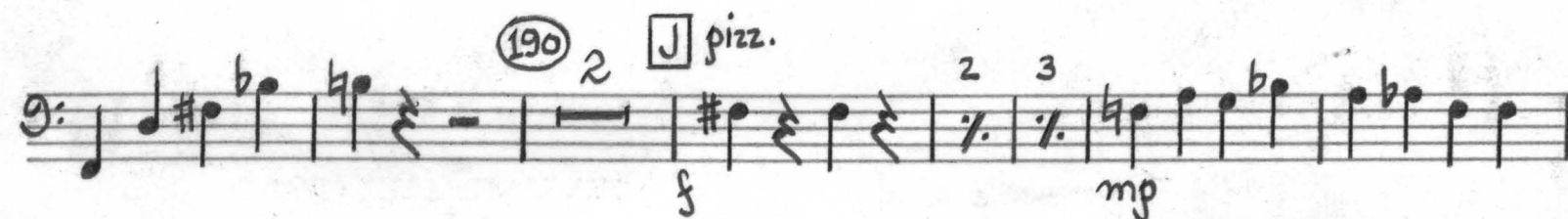
F trombones tuba 8 (120) 10 (130) 10 (140) 1 G WOODWINDS 9 (150) 10 (160) H WOODWINDS 9



I pizz. (170) 2 5 (180) pizz.



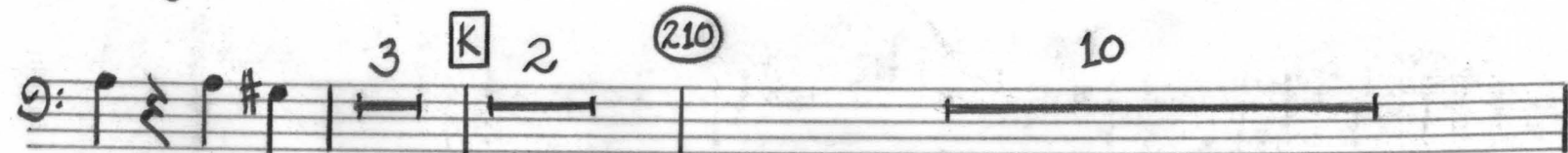
(190) 2 J pizz. 2 3



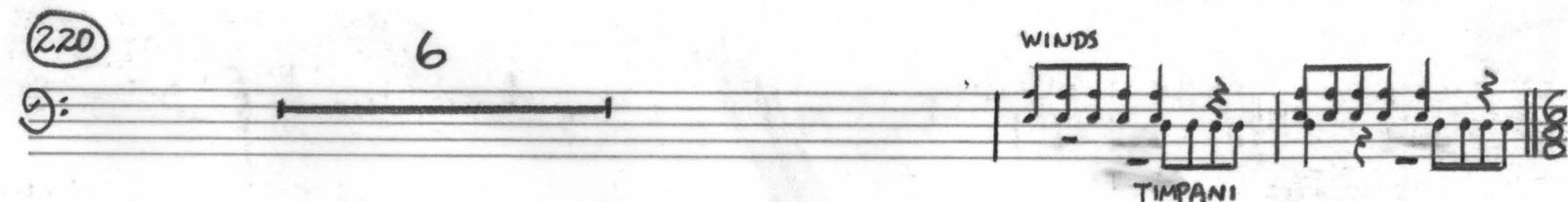
(200)



3 K 2 (210) 10



(220) 6 WINDS TIMPANI



V.S.

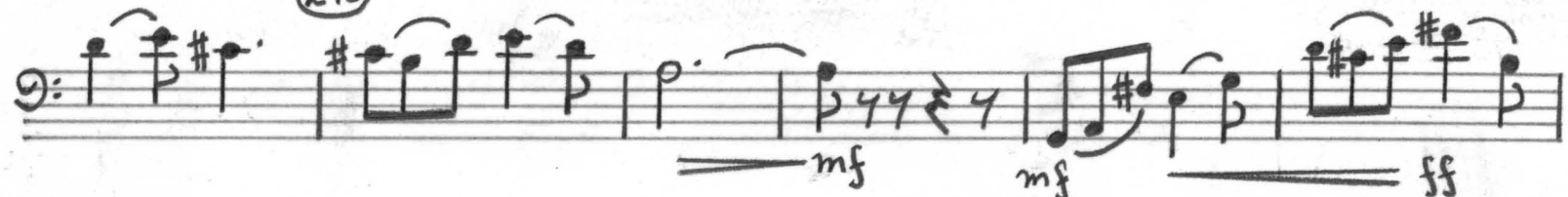
11. 'CELLO

L l'istesso tempo $\text{♩} = 120$
arco lyrico

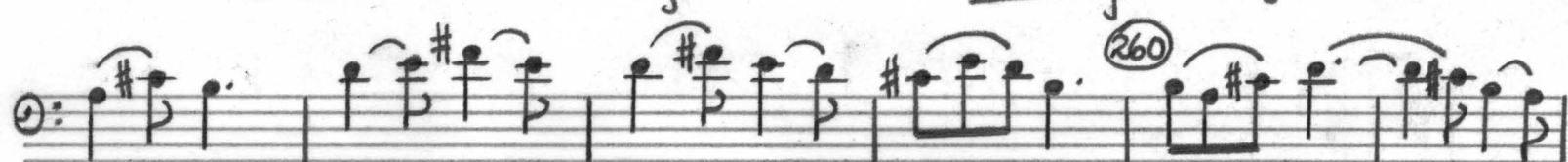
(230)



(240)



(250)



(270)

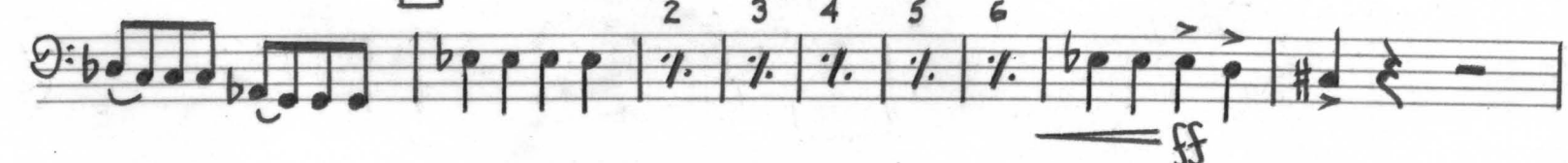


N l'istesso tempo $\text{♩} = 120$

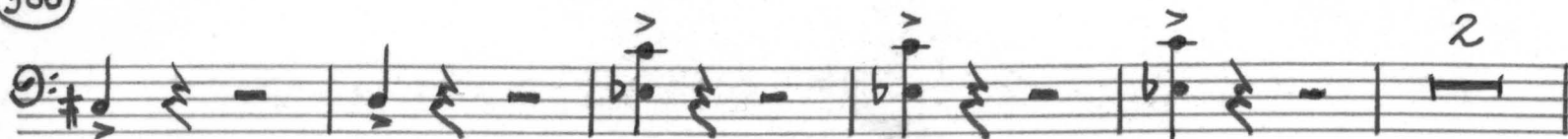
BRASS **O**



P



300



Q

310 div.

