

TROMBONE
CONCERTO
Nº 2

WALTER ROSS

Piccolo

PICCOLO

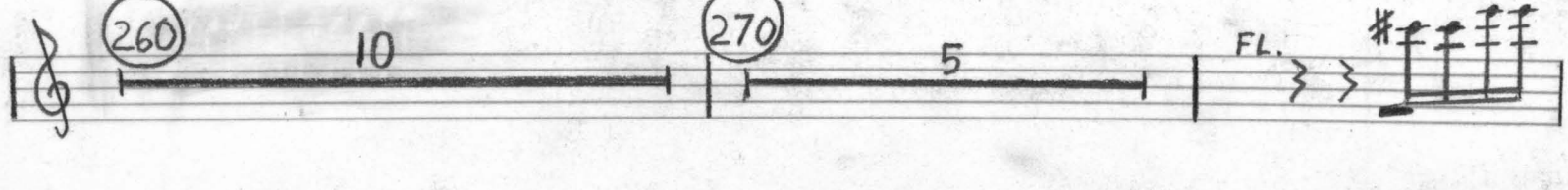
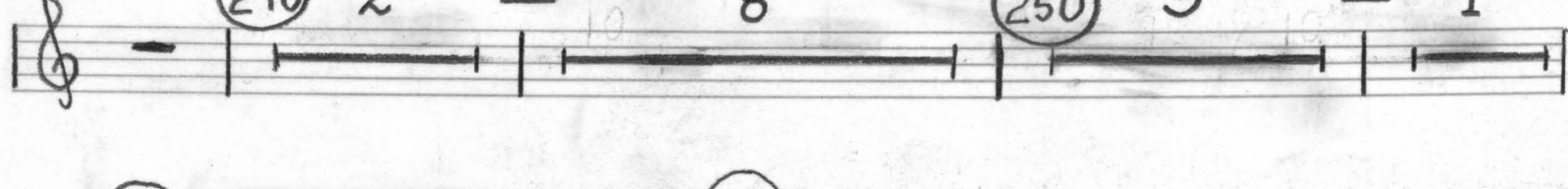
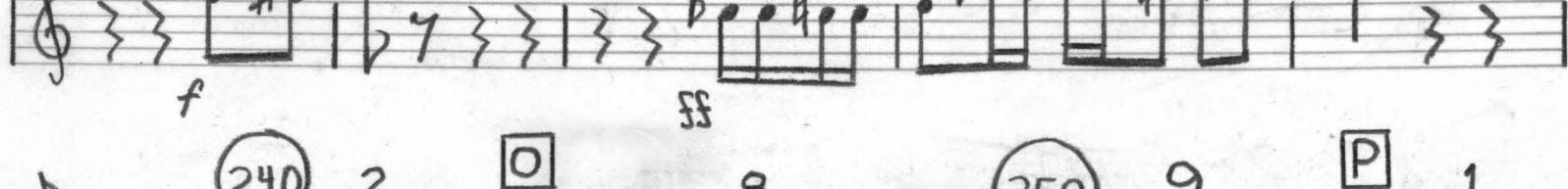
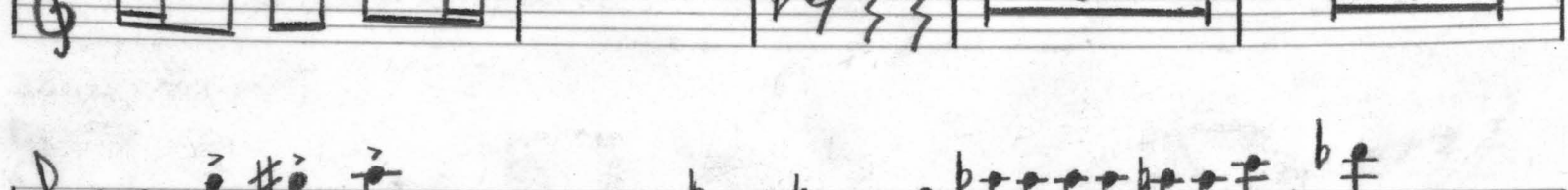
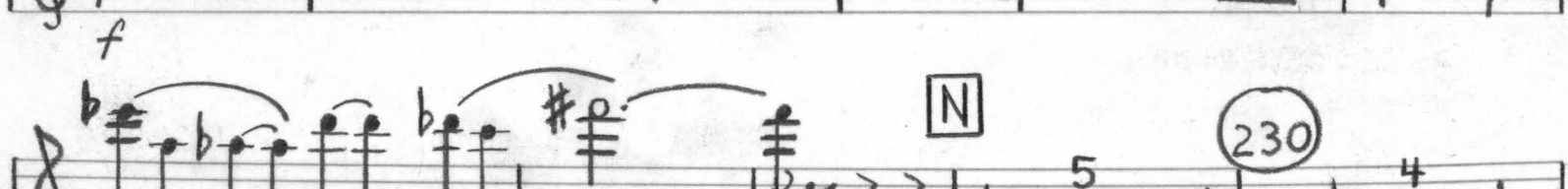
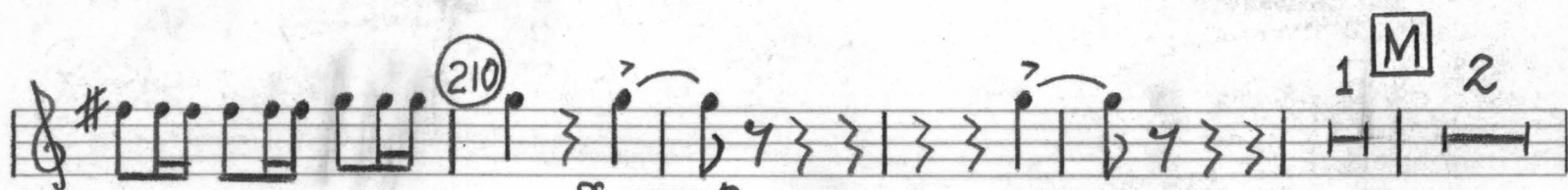
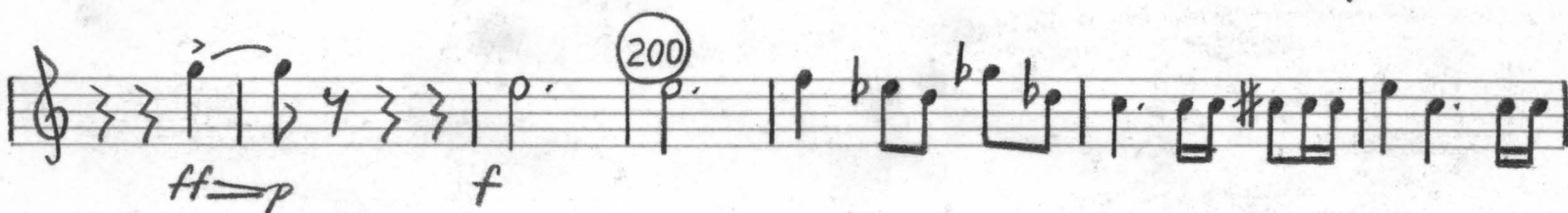
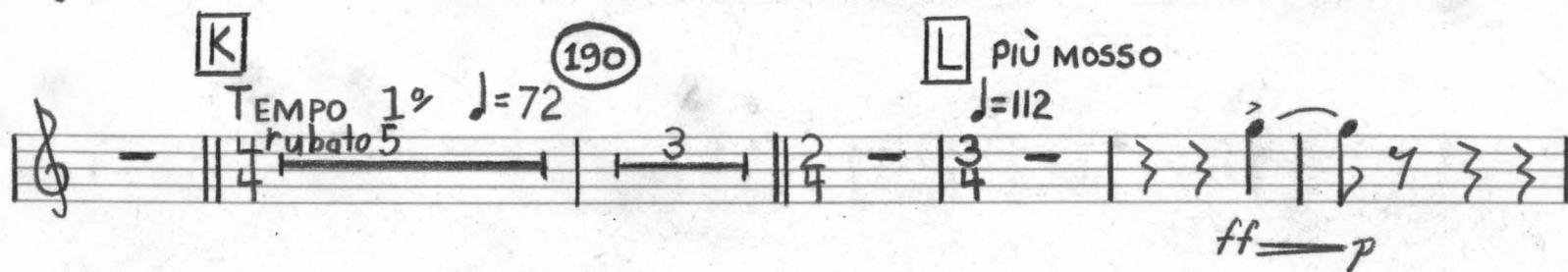
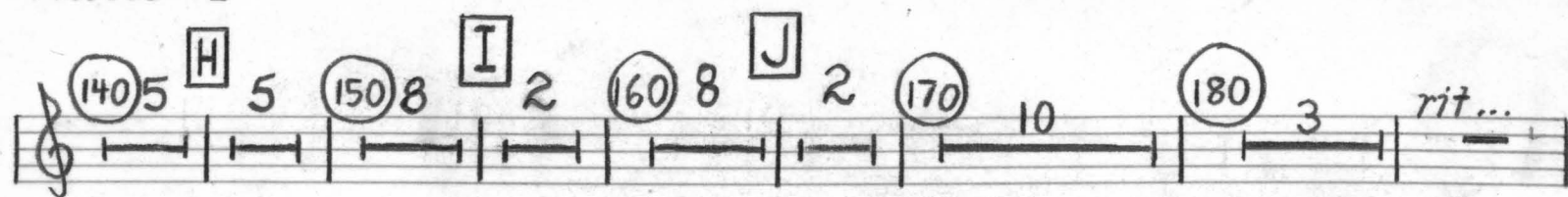
TROMBONE CONCERTO No 2

WALTER ROSS

POCO ADAGIO $\text{♩} = 72$

(10) I ALLEGRO ENERGICO $\text{♩} = 108$

8 2 3 ff \Rightarrow p ff



Picc.

2

3

280

4

5

6

Q Più Mosso $\text{♩} = 120$

fff

f

ff

mf

ff

mf

ff

ff

f

ff

mf

ff

290

3

2

300

2

5

f

ff

f

ff

ff

Allegro animato $\text{♩} = 108$

II

4

3

10

6

p

p

mf

20

mf

30

7

8

2

3

4

5

6

8

3

Handwritten musical score for Piccolo, featuring measures 40 through 270. The score includes various musical notations, including notes, rests, and dynamic markings. Key sections and markings include:

- Measure 40:** First measure of the score.
- Measure 50:** Section B begins.
- Measure 60:** Section C begins.
- Measure 70:** Section D begins.
- Measure 80:** Section E begins, marked "solo trb."
- Measure 90:** Section F begins, marked "strings".
- Measure 100:** Section G begins, marked "strings".
- Measure 110:** Section H begins.
- Measure 120:** Section I begins, marked "Allegro moderato ♩ = 108".
- Measure 130:** Section J begins.
- Measure 140:** Section K begins, marked "solo trb."
- Measure 150:** Section L begins.
- Measure 160:** Section M begins.
- Measure 170:** Section N begins.
- Measure 180:** Section O begins, marked "FL. OB. CL.".
- Measure 190:** Section P begins.
- Measure 200:** Section Q begins.
- Measure 210:** Section R begins, marked "Brass".
- Measure 220:** Section S begins.
- Measure 230:** Section T begins.
- Measure 240:** Section U begins.
- Measure 250:** Section V begins.
- Measure 260:** Section W begins.
- Measure 270:** Section X begins.

The score concludes with a double bar line and a 3/4 time signature.

5. Piccolo

l'istesso tempo ♩ = 108

W.W. 1 (280) 3

mf

(290) 6

p

(300) 2 3

mf

(310) 4 5 6 7 8

p

(320) 5

mf

(330) 3

R

(340) 10

(350) 10

Brass

(360) 4

temp. brass

S

W.W.

(370) 10

(380) 6

(390) 2

T

(400) 10

(410) 10

(420) 2

FLS.

Picc.

(430) 10

(440) 8

(450) 1

V

(460) 10

(470) 2

W solo trb.

4

FLS.

1

Adagio $\text{♩} = 60$

III

9 (10) Harp 1 p

#p #p #p #p #p #p #p #p

#p #p #p #p #p #p #p #p

2 [A] 2 (20) 7 [B] 3

(30) 8 [C] Allegro vivo $\text{♩} = 120$ 2 (40) 1 pp

ff

(50) 2 [D] BSSNS. 8 (60) 10 (70) 10 (80) 2 w.w. 8

(90) 10 (100) 2 FL5. [E] mf

(110)

trm [F] 7 (120) 10 (130) solo trb.

ff

[G] 7 (140) f

2 ff [H] 9 (160) 9 [I] HORNS 1

7. Piccolo

170 180 190 J 200 FL.

10 10 2 8 6 1

K Brass

2 3

210

Handwritten musical notation for a brass part. The notation is on a single staff with a treble clef. The key signature has one flat (B-flat). The notation includes a whole note chord (F2, C3), followed by a half note chord (F2, C3), and then a series of eighth and quarter notes with slurs and ties. A circled '210' is written above the staff, and a circled '2' is written below the staff.

Istesso tempo
 ♩. = 120

L 230 10 240 10 250 5 M 5 260 10 270 9

N Istesso tempo
d=120

1 (280) 2 FL. 3 2

Handwritten musical score for a flute part. The score is on a single staff with a treble clef and a common time signature (C). It begins with a box containing the letter 'N' and the text 'Istesso tempo' and 'd=120'. The first measure has a '1' above it and a circled '280'. The second measure has a '2' above it. The third measure has a 'FL.' above it and a slur over a quarter note B-flat, an eighth note A-flat, and a quarter note G. The fourth measure has a slur over a quarter note F, an eighth note E, and a quarter note D. The fifth measure has a '3' above it. The sixth measure has a '2' above it. The seventh measure has a '3' above it and a slur over a quarter note B-flat, an eighth note A-flat, and a quarter note G. The eighth measure has a '2' above it and a slur over a quarter note F, an eighth note E, and a quarter note D. The score ends with a double bar line and a fermata over the final note.

290 P

Handwritten musical notation for exercise 290. The notation is on a single staff in treble clef. It consists of eight measures. The first measure has a whole rest with a '2' above it. The second measure has a whole rest with a '1' above it. The third measure has a whole rest with a '3' below it. The fourth measure contains a beamed eighth-note triplet (F4, G4, A4) with a slur above it. The fifth measure contains a beamed eighth-note triplet (G4, F4, E4) with a flat sign on the G4 and a slur above it. The sixth measure contains a beamed eighth-note triplet (F4, E4, D4) with a flat sign on the F4 and a slur above it. The seventh measure contains a whole rest. The eighth measure contains a beamed eighth-note triplet (F4, G4, A4) with a slur above it.