

TROMBONE  
CONCERTO  
Nº 2

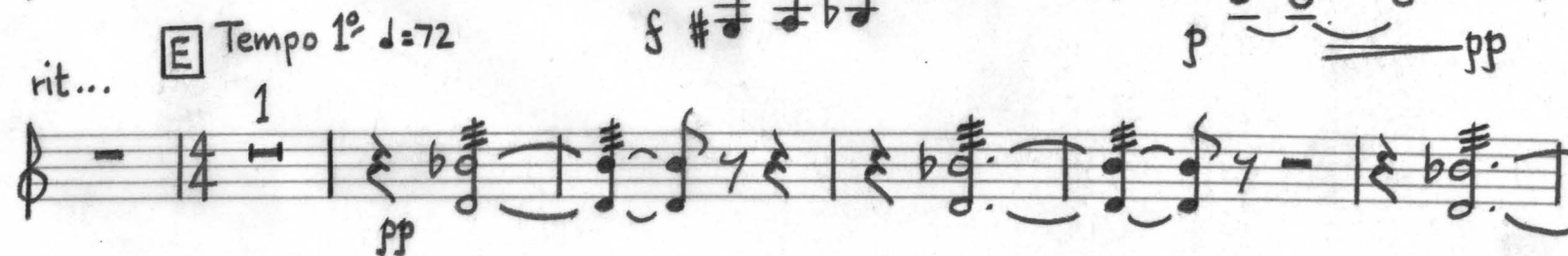
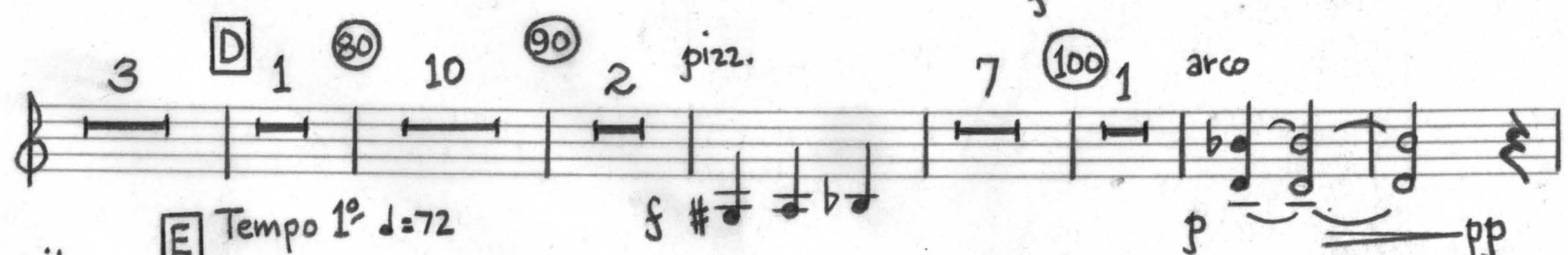
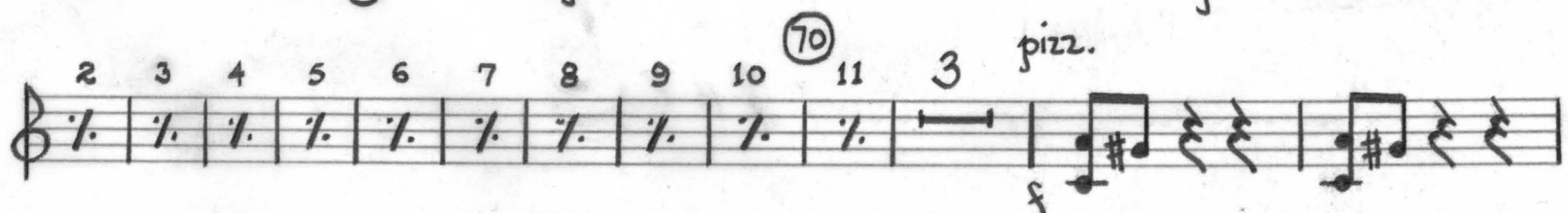
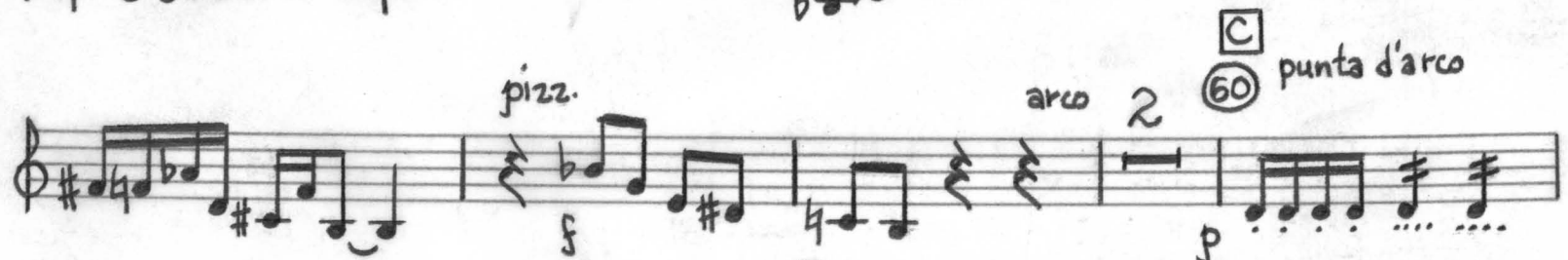
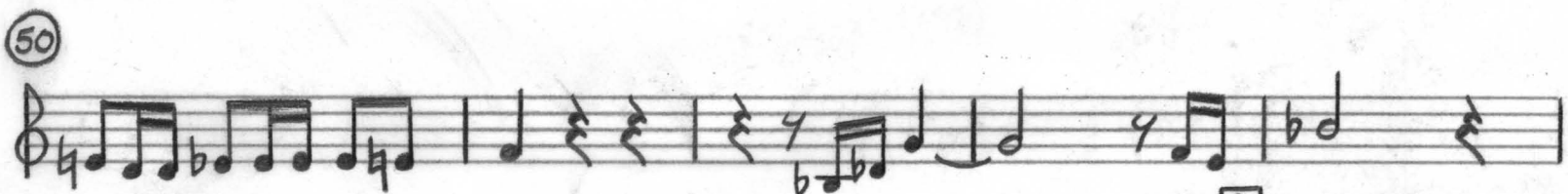
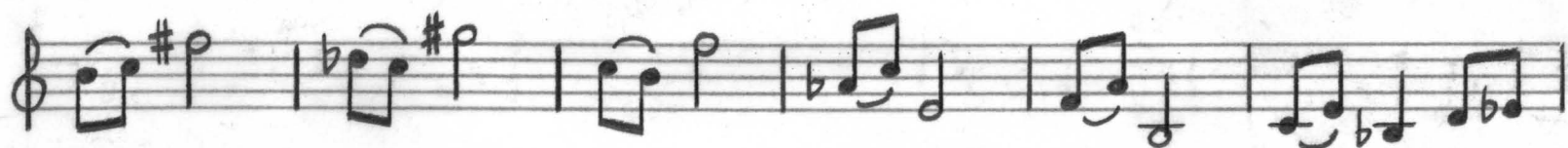
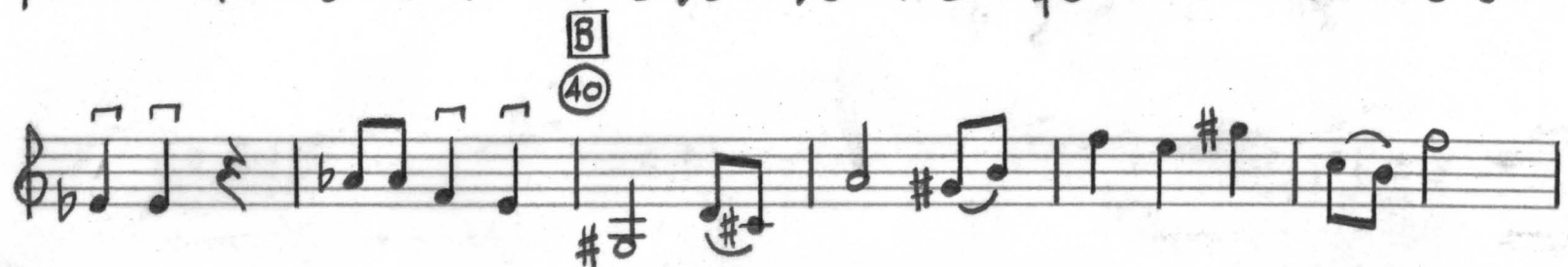
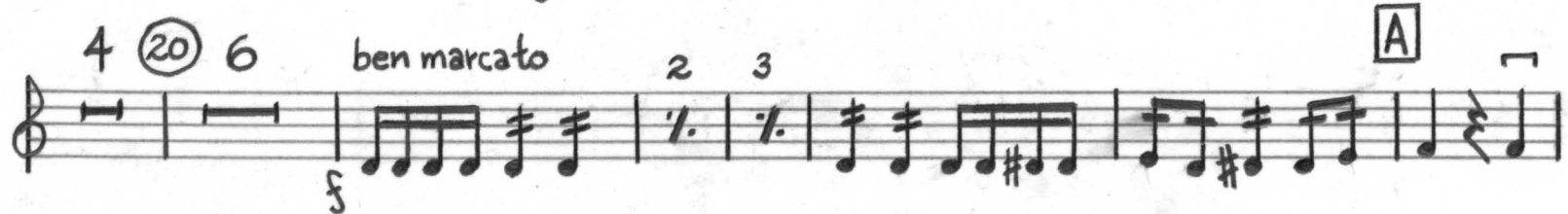
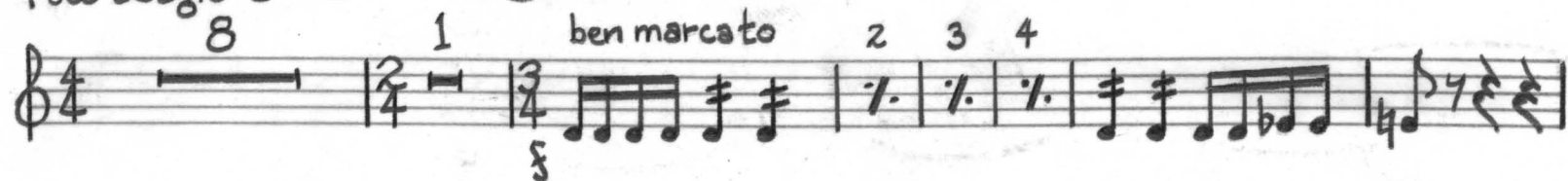
WALTER ROSS

**Violin II**

## Violin II

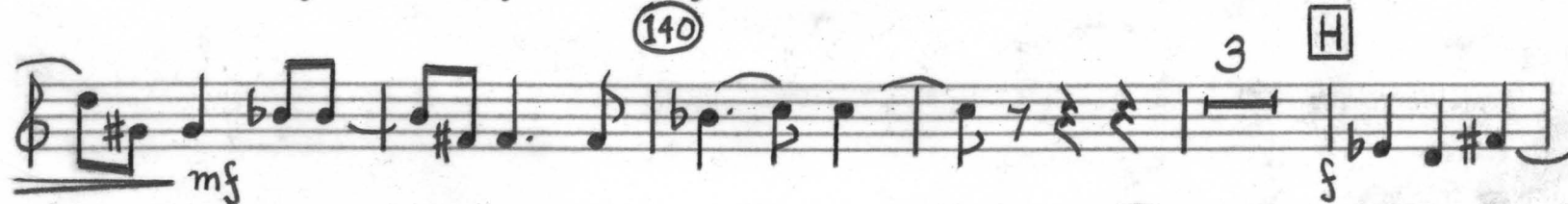
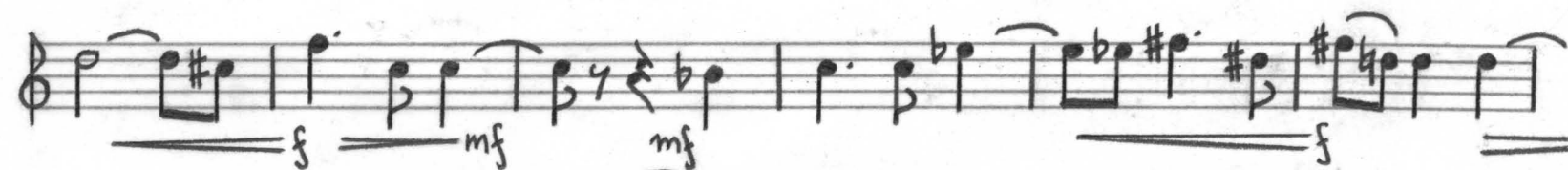
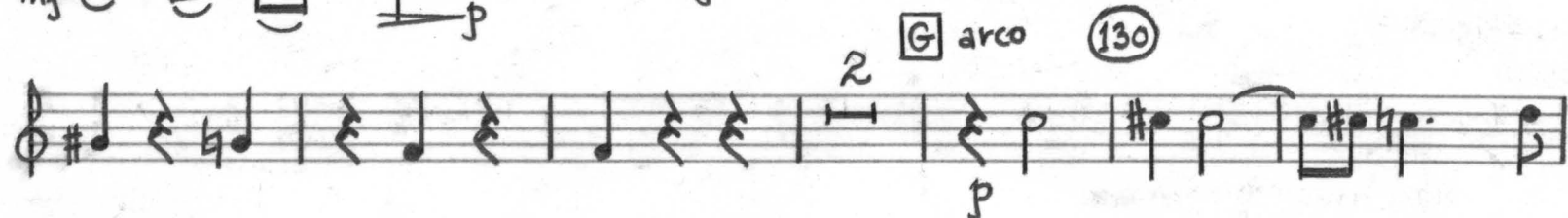
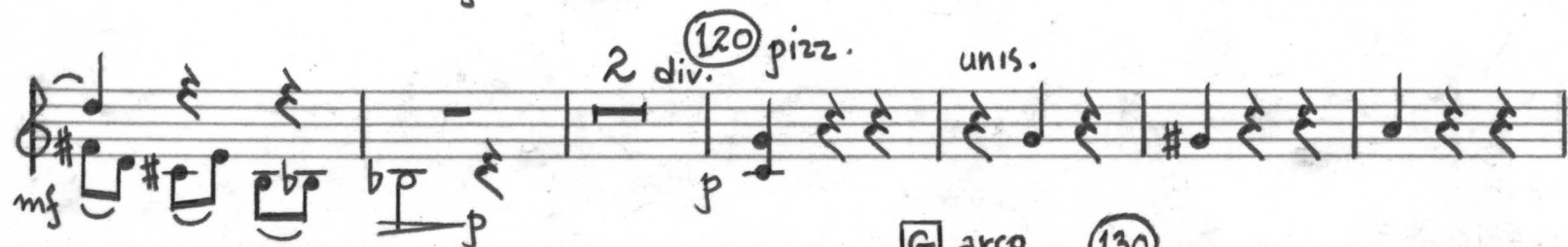
## TROMBONE CONCERTO N° 2

Walter Ross

Poco adagio  $\text{♩} = 72$ (10) Allegro energico  $\text{♩} = 108$ 

(110)

[F] Tempo II ♩ = 100



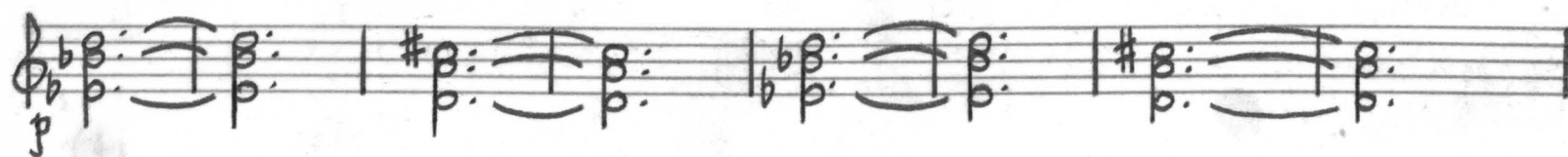
V.S.

# 3. Violin II

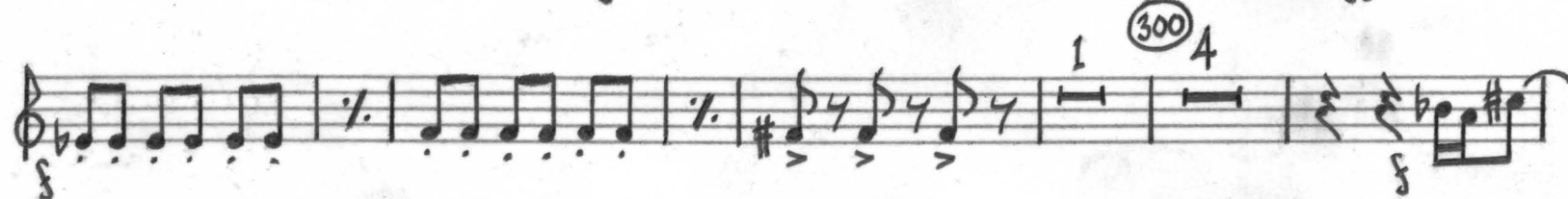
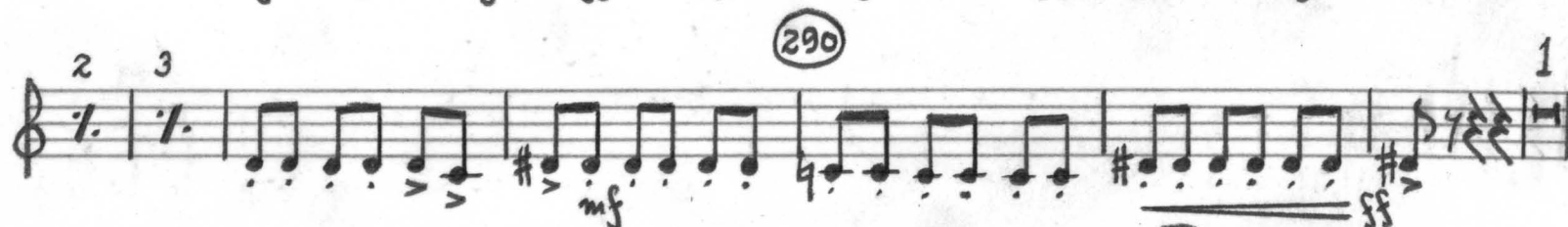
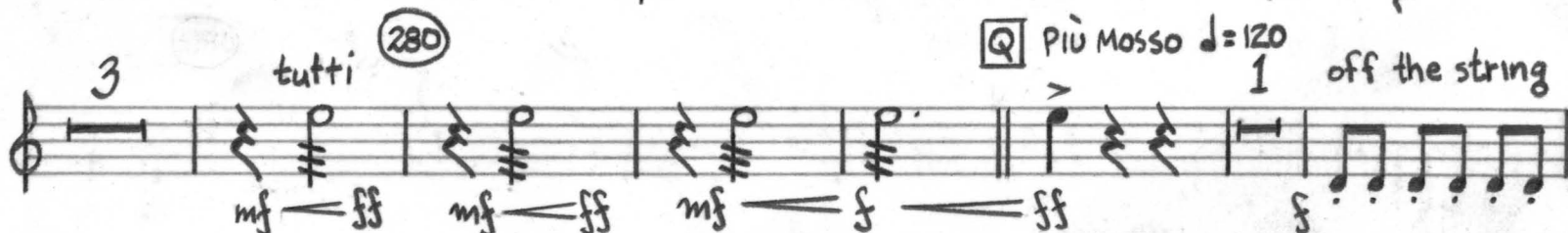
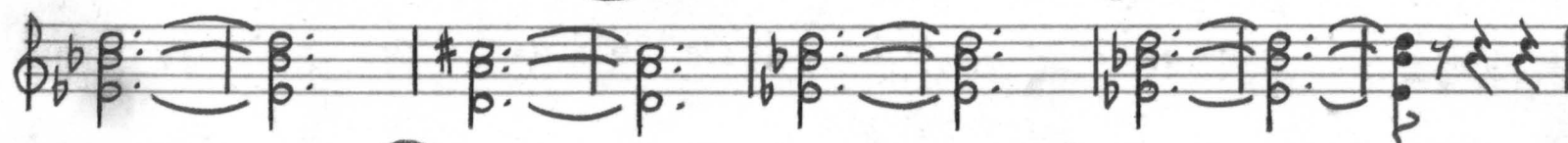
[J] (170)   
 mf   
 f   
 mf   
 f   
 (180)   
 mf   
 [K] *Tempo*  $\text{♩} = 72$  *rubato*   
 in tempo (190) *rubato*   
 [L] *più mosso*  $\text{♩} = 112$  *ben marcato*   
 2 1 2 3 4   
 sfz (200)   
 sfz   
 sfz   
 7   
 (210) *ben marcato*   
 f 2 3   
 [M] *pizz.*   
 1 (220) 1 (*pizz.*)   
 [N] *arco*   
 f   
 (230)   
 3 (240) 2 [O] 8 (250) 9



**P** div. a 3  
non vib.

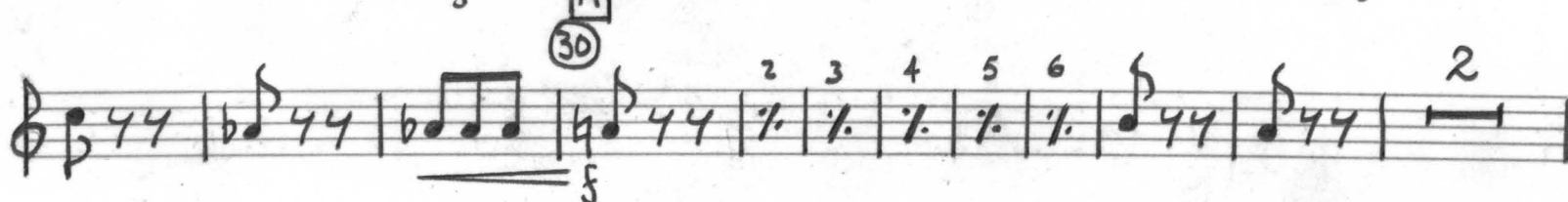
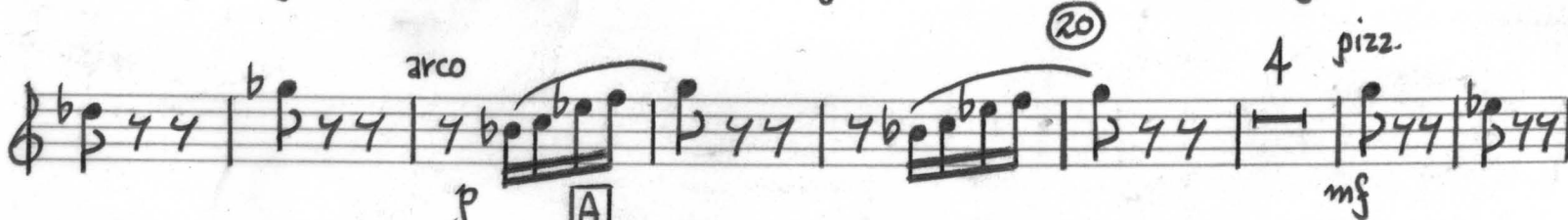
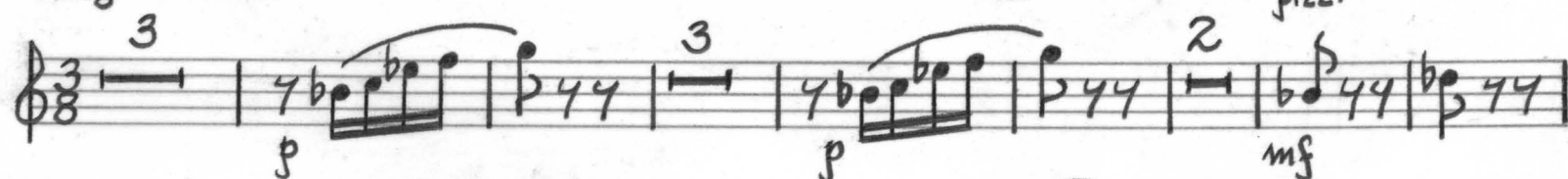


(270)



Allegro animato ♩ = 108

II



# 5. Violin II

WOODWINDS

BRASS

(40) 7 [B] 3 (50) 10 (60) 2 [C] 8 (70) 10 (80) 4 [D] arco 2 3 4

(90) 2 3 4 5 6 3 [E] pizz. (100) 2 3 4 5 6 7 8 9

(110) 2 3 4 5 6 7 8 9 (120)

(130) 2 [F] 1 arco

(140)

[G] non vib. (150)

[H] 1 (160) 10 (170) 10 (180) 1

pizz. short [I] (190) All<sup>2</sup> moderato ♩ = 108 10 (200) 3

[J] arco

(210) [K] 2

The musical score for Violin II consists of 210 measures. It begins with measure 40 and includes rehearsal marks A through K. The score is written in treble clef with a key signature of one flat (B-flat). It includes various musical notations such as notes, rests, and dynamic markings. The score also includes performance instructions for woodwinds and brass, such as 'WOODWINDS', 'BRASS', 'arco', 'pizz.', 'non vib.', and 'All<sup>2</sup> moderato ♩ = 108'. The score ends with measure 210.

Handwritten musical score for Violin II, measures 220 to 300. The score is written on ten staves.

Measures 220-229: Includes markings (220), (230), (240), and (250). Dynamics include *mf*, *p*, and *pp*. Fingerings 1, 2, and 3 are indicated. A box labeled 'L' is present above measure 221.

Measures 230-239: Includes marking (240). Dynamics include *mf*, *p*, and *pp*. Fingering 1 is indicated. A box labeled 'M' is present above measure 240.

Measures 240-249: Includes marking (250). Dynamics include *pp*. Fingering 1 is indicated. A box labeled 'N' is present above measure 250.

Measures 250-259: Includes marking (260). Dynamics include *pp*. Fingering 1 is indicated.

Measures 260-269: Includes marking (270). Dynamics include *mf*, *f*, and *p*. Fingering 3 is indicated.

Measures 270-279: Includes marking (280). Dynamics include *mp*. Fingering 1 is indicated. A box labeled 'O' is present above measure 270.

Measures 280-289: Includes marking (290). Dynamics include *mf*. Fingering 1 is indicated. A box labeled 'P' is present above measure 280.

Measures 290-299: Includes marking (300). Dynamics include *mf*. Fingering 1 is indicated. A box labeled 'P' is present above measure 290.

Measures 300-309: Includes marking (300). Dynamics include *mf*. Fingering 1 is indicated. A box labeled 'P' is present above measure 300.

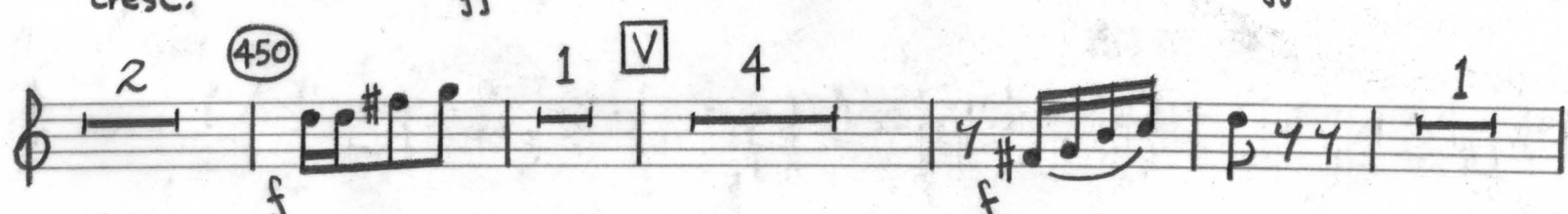
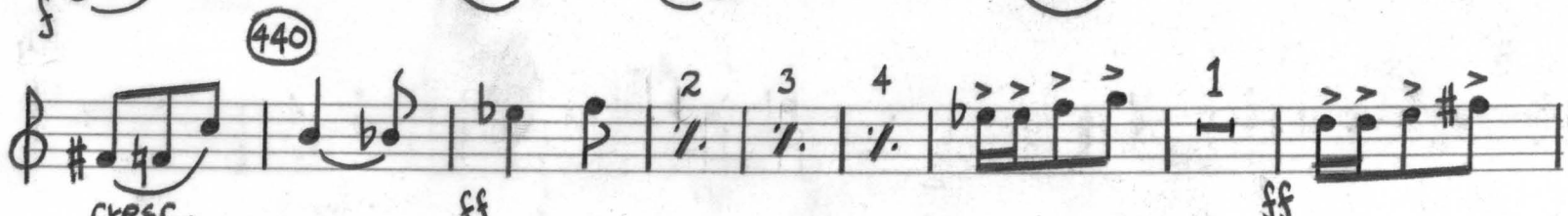
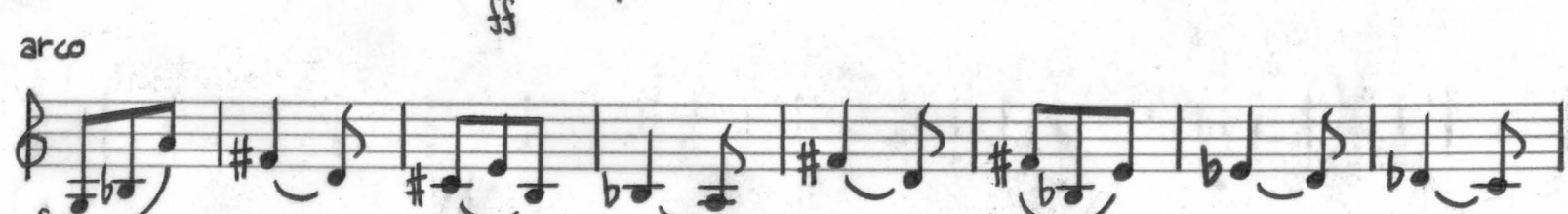
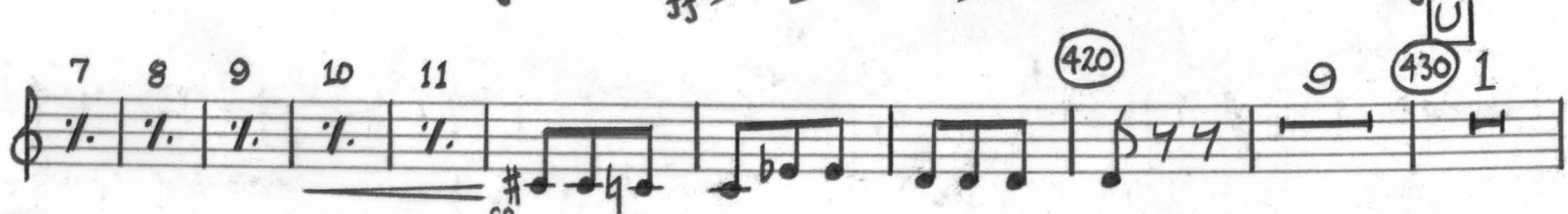
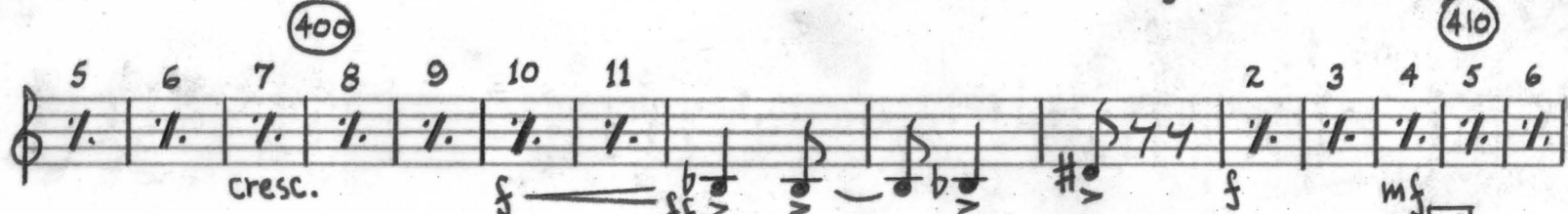
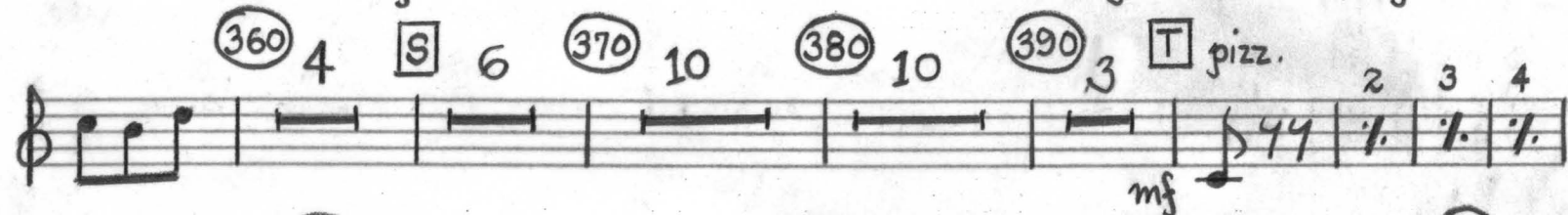
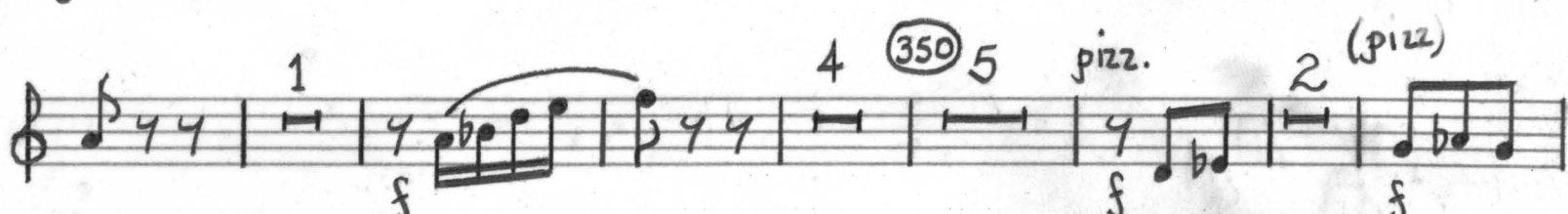
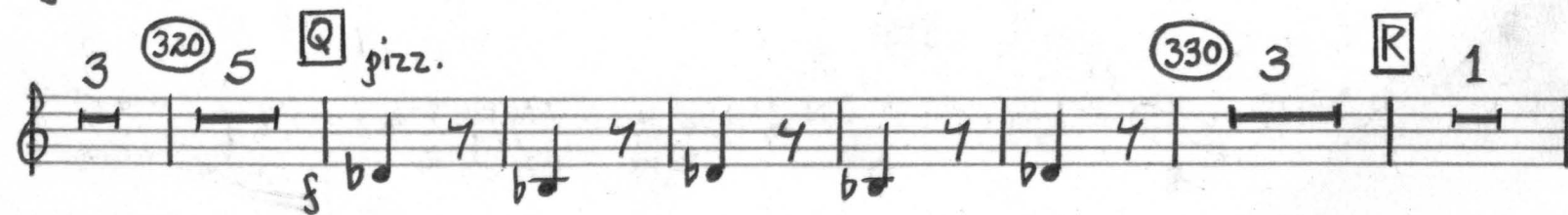
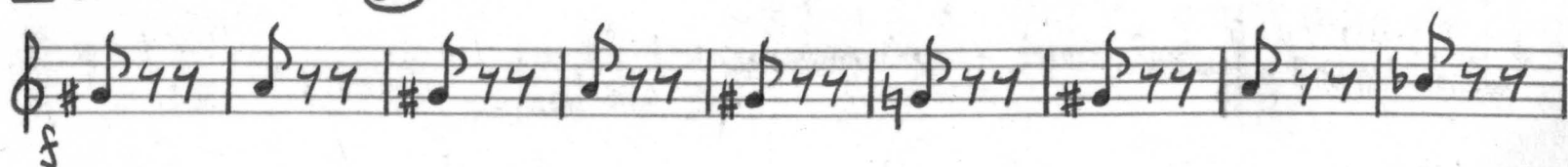
Additional markings: *l'istesso tempo* and *♩. = 108* are written below measure 270. *pizz.* is written above measure 290. *arco* is written above measure 300.



# 7. Violin II

**P** pizz.

(310)





TIME!

# 9. Violin II

7 (90) 10 (100) 3 [E] 7 (110) 2 [F] <sup>trombones</sup> 8 (120) 10 (130) 10 (140) 1 [G] <sup>WOODWINDS</sup> 9

(150) 10 (160) 8 [H] <sup>WOODWINDS</sup> [I] pizz. (170) 2

5 (180) 10 (190) 2 [J] pizz. 2 3 mp mf

(200) 2 3 mf

[K] 2 (210) 10 (220) 8 [L] *l'istesso tempo* 2 (230) 1 *lyrico* *arco*

(240) mf sf

(250) mf

[M] p mf

(260) 1

[illegible]