

THE PLEASURE'S  
IN WALKING THROUGH

A SONG OF THE SEASONS

WALTER ROSS

**A Clarinet 1**

# I

## A Clarinet I

Cantabile  $\text{♩} = 48$  (in 1)

Fl. 12  $\text{mf}$

20

[A] 10 [B] Fl. Ob. 3  $\text{pp}$   $\text{mf}$

48 [C] 6 20

81 Va. cello 5 [D] 11 poco rit. 4 [E]  $\text{♩} = 90$  Obs. Bsns. 4  $\text{mf}$

109 9  $\text{mf}$

125 [F] 12 [G]  $\text{f}$   $\text{mf}$   $\text{f}$   $\text{mf}$

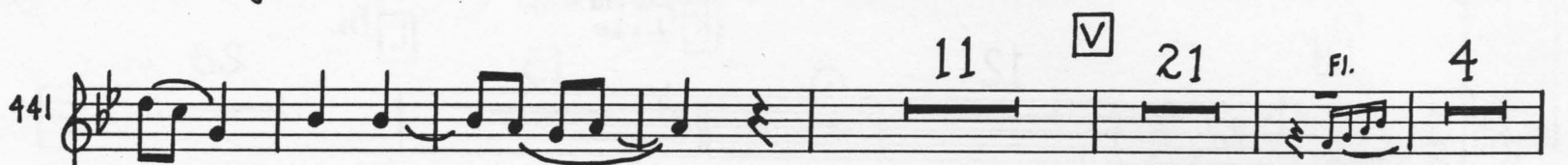
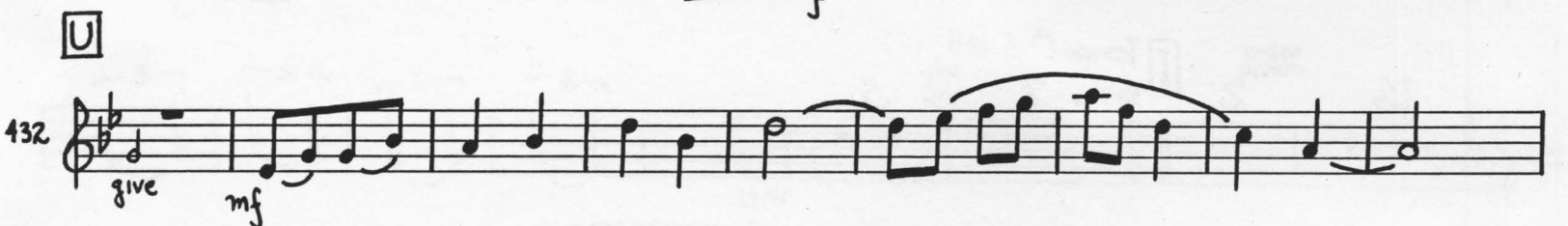
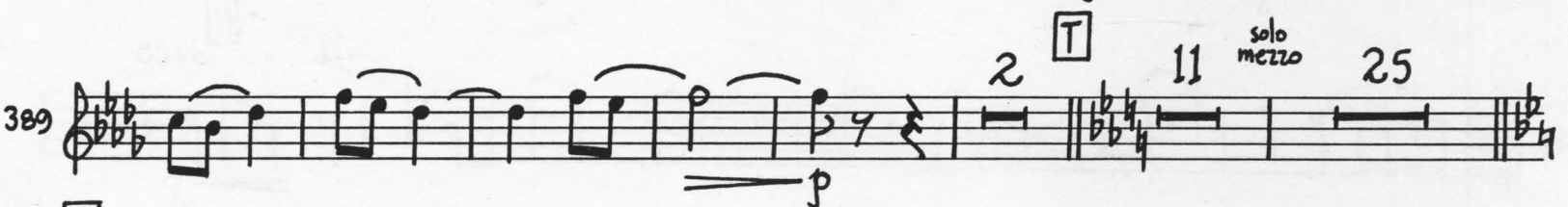
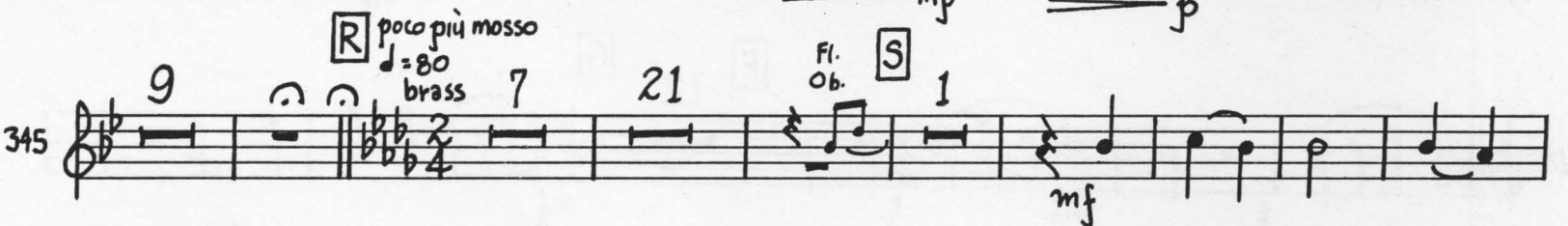
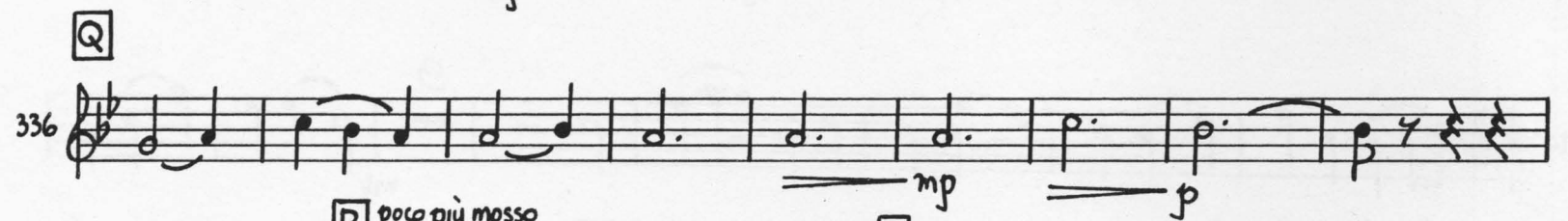
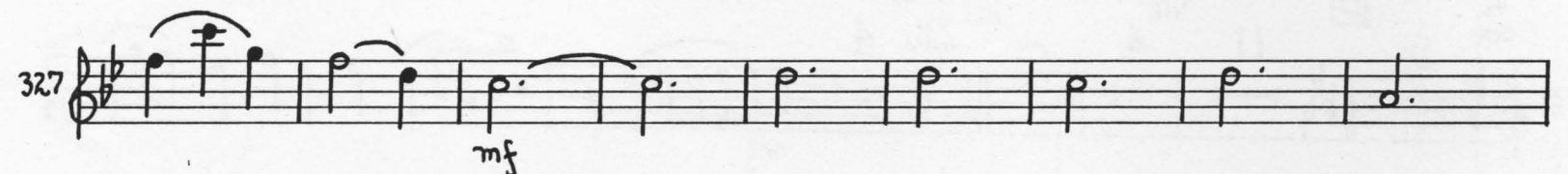
143 rit. ... [H]  $\text{♩} = 80$   $\text{p}$

150 16 meno mosso 2 [I] Tempo 1<sup>o</sup>  $\text{♩} = 48$  strings 7 solo Vn. 5  $\text{mp}$

185 [J] 12 [K] poco più mosso  $\text{♩} = 60$  15 [L] Fls. 28  $\text{p}$

2. M

Cl. I





482 *mf* *mp* *W* 12

490 *f* *mf* *p* *mf* *f* *Y* *meno mosso*  $\text{♩} = 60$  *poco più mosso*  $\text{♩} = 72$  *Z* *cello* 37 *AA* *poco più mosso*  $\text{♩} = 80$  *fi.* 2 *solo mezzo*

508 *X* *Fl.* 8 *rit.* 4 25 13 *BB* *Tempo 1<sup>o</sup>*

600 *mf* *f* *mf* *mp* *CC* 9 *DD* *cello* 13 5

614 *pp* *EE* 26

648 *mf* *mp*

# PASTORALE TACIT

Andante  $\text{♩} = 72$  *A* *II*

6 *p* *mf* *B* 10 *C* 5 *D* *bssn.* 3

11 *p*

32 *f*

38 *mf* *mp* accel. . . [E]  $\text{♩} = 96$   
Obs. bssns. 2 3 4

51 *mf*

57 [F] 8 *f*

72 [G] 14 Fl. 4 [H] 8 *mp* *mf* *f*

104 [I] 22 [J] meno mosso  $\text{♩} = 80$  brass 29 [K] sub. d. = 60 bssns. 3 *f*

164 [L] 15

187 [M] *mf* [N] *f* 16

209 *f* 17 [O] brass 18 [P] Fls. Obs. 6

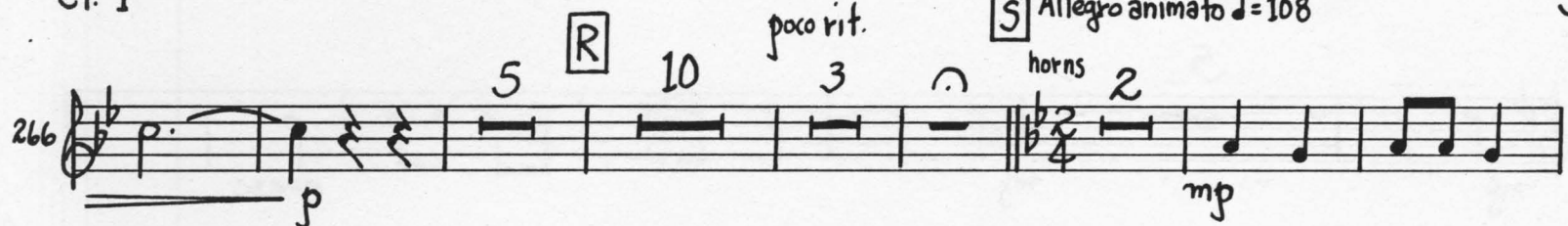
255 brass 4 [Q] *mf* *f*

Cl. I

poco rit.

**S** Allegro animato  $\text{♩} = 108$

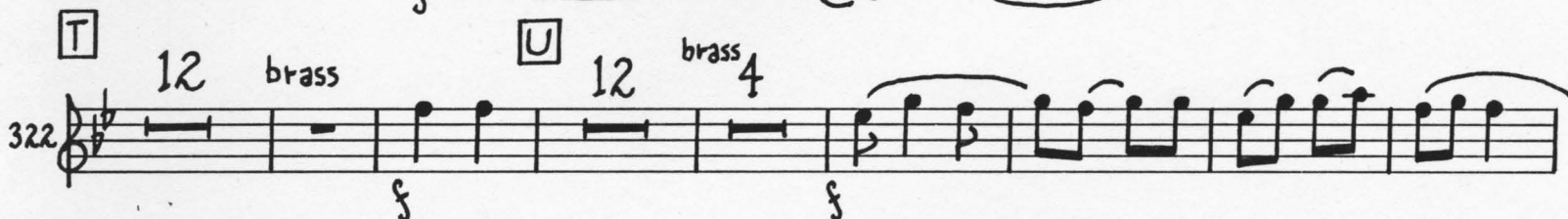
5.

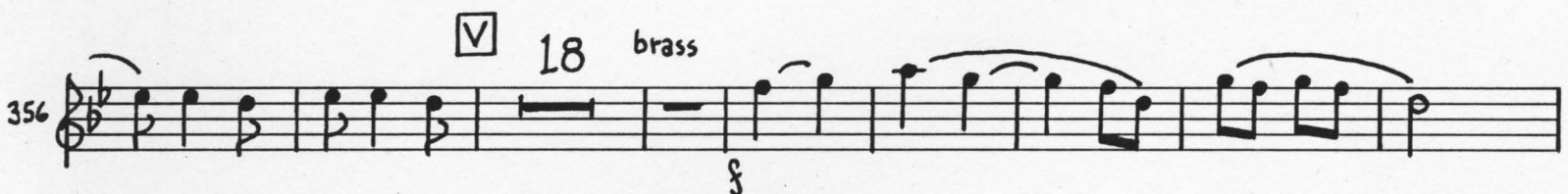
266 

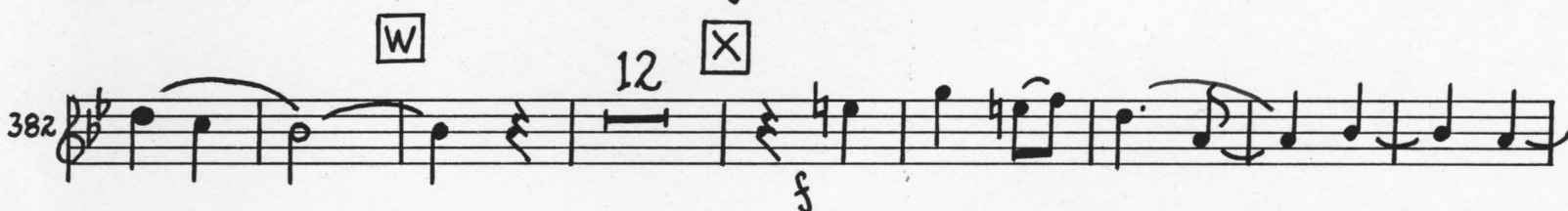
291 

302 

310 

**T** 322 

356 

382 

402 



6.

128

mf mf mf cresc.

5 5 2

Detailed description: This musical staff, numbered 128, is in G major (one flat) and 4/4 time. It contains measures 128 through 135. Measures 128 and 129 have whole notes with accents. Measures 130 and 131 have whole notes with accents and fingerings 5 and 5 respectively. Measures 132 and 133 have whole notes with accents and fingering 2. Measures 134 and 135 have eighth notes. Dynamics include mf (measures 128, 130, 132) and cresc. (measure 135).

441

f 2

Detailed description: This musical staff, numbered 441, is in G major (one flat) and 4/4 time. It contains measures 441 through 448. Measures 441-447 contain various rhythmic patterns including eighth and sixteenth notes. Measure 448 has a whole note with a fingering of 2. A forte (f) dynamic is present in measure 443.

448

5 ff

Detailed description: This musical staff, numbered 448, is in G major (one flat) and 4/4 time. It contains measures 448 through 455. Measures 448-449 have eighth notes. Measures 450-451 have whole notes with a fingering of 5. Measures 452-453 have eighth notes. Measures 454-455 have eighth notes. A fortissimo (ff) dynamic is present in measure 452.