

THE PLEASURE'S
IN WALKING THROUGH

A SONG OF THE SEASONS

WALTER ROSS

Viola

Cantabile $\text{d.} = 48 (\text{in } 1)$

I

VIOLA

Handwritten musical score for Viola, marked Cantabile, $\text{d.} = 48 (\text{in } 1)$. The score is divided into measures and includes various musical notations and performance instructions.

Measures 13 and 4 are marked above the staff. Measure 13 includes a handwritten "Vn. II" above it. Measure 4 includes a handwritten "mf" below it.

Measures 24, 32, 41, 87, 96, 115, 123, 135, and 144 are marked at the beginning of their respective staves.

Section markers A, B, C, D, E, F, G, and H are placed above the staves.

Performance instructions include:

- poco rit.* (poco ritardando)
- div.* (diviso)
- unis.* (unison)
- pizz.* (pizzicato)
- rit.* (ritardando)

Dynamic markings include *mf* (mezzo-forte), *p* (piano), *pp* (pianissimo), and *f* (forte).

Tempo changes are indicated by $\text{d.} = 90$ and $\text{d.} = 80$.

Measure 13 includes a handwritten "brass" above it. Measure 7 includes a handwritten "chorus" above it. Measure 20 includes a handwritten "mf" below it. Measure 11 includes a handwritten "mf" below it. Measure 16 includes a handwritten "mp" below it.

2.

Va.

meno mosso I Tempo 1^o d. = 48

166 2 arco I 3 4 p mf

177 9 J 7 solo mezzo f mf p pp mf solo

K

200

L tutti

209 mf f

219 mf p mp mf

228 solo mp p mf f mf

M 10 chorus 5

237 mp

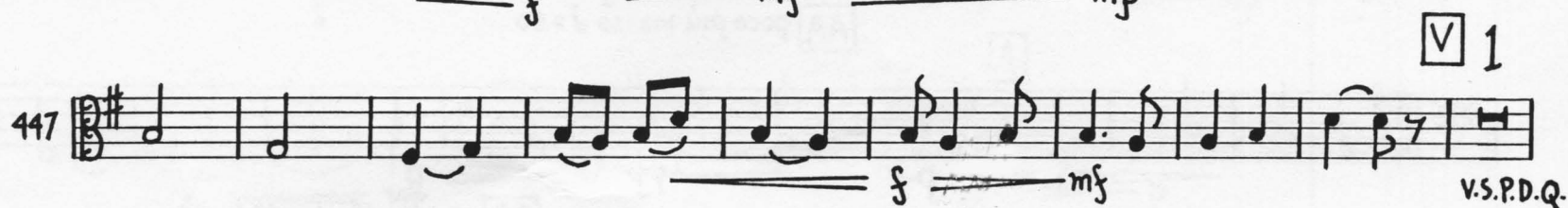
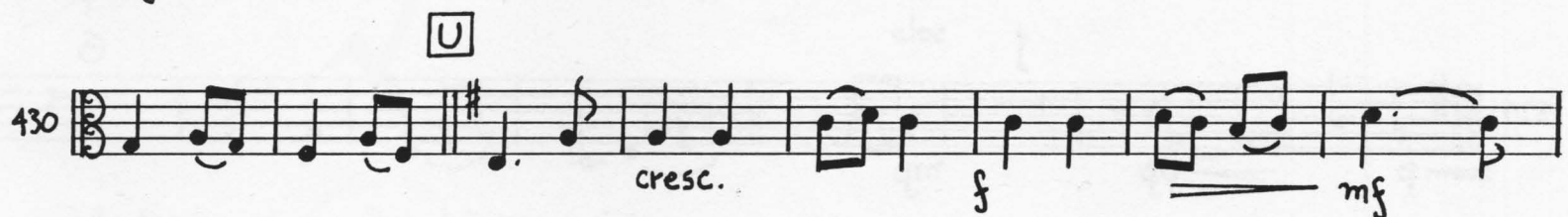
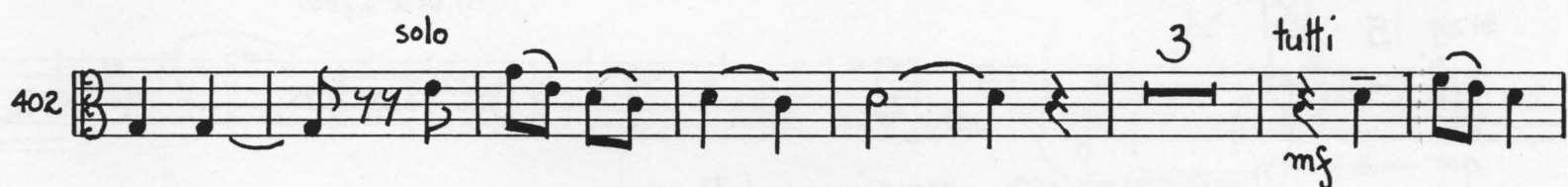
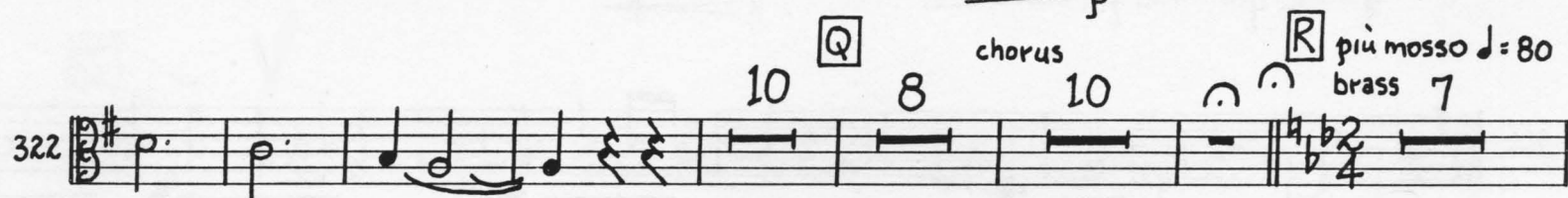
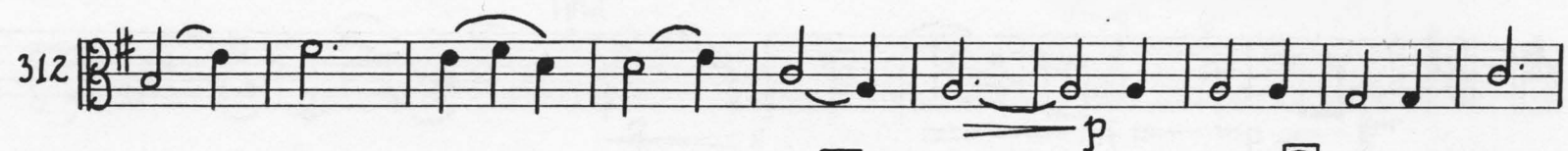
tutti N

259 f ff f mf mp p

O 12 8 MEZZO SOLO 5 mf

268 pp sub. meno mosso d. = 48 4 P cello 2

299 mf



4.

Va.

457 *solo* *tutti*
mf *p*

466 *cresc.* *f* *mf* *mp*

475 16 *W* 6
p *mp* *mf* *f* *rit. poco a poco*

503 *brass* 5 *X* *fl.* 4
p *meno mosso* $\text{♩} = 60$ *poco più mosso* $\text{♩} = 72$

520 25 13 *Z* *cello* 1
pp *mf*

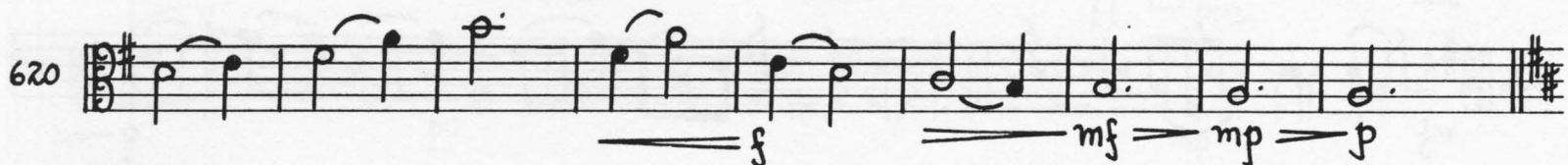
562 *f* *mf* *f* *mf* *mp*

570 1 *solo* 6
p *pp* *mp*

583 *tutti* *mp* *cresc.* *f* *mp*
AA *poco più mosso* $\text{♩} = 80$

592 *mf* *p* *pp* *p*
rit. . . BB *Tempo 1^o* $\text{♩} = 48$ (in 1)

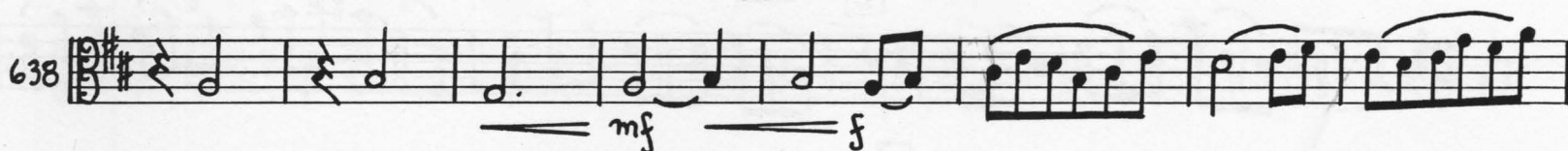
603 5 2 3 5 *horn* 5
pp *pp* *mp*



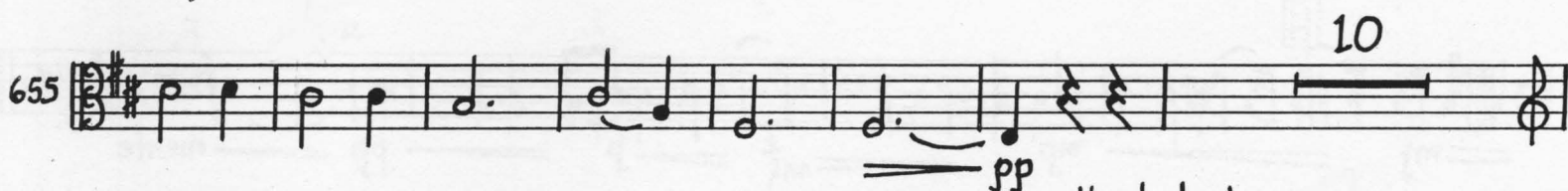
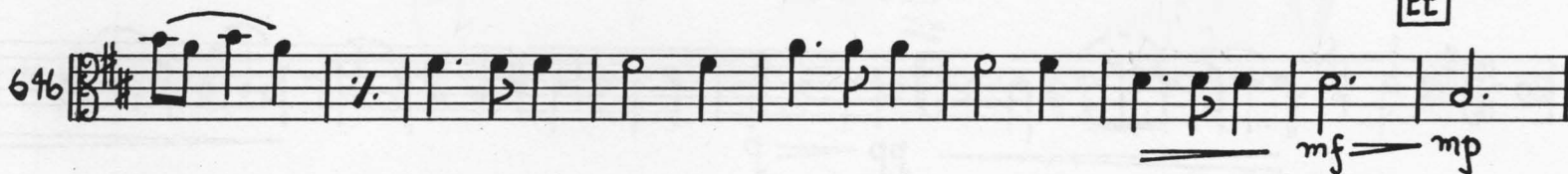
CC



DD



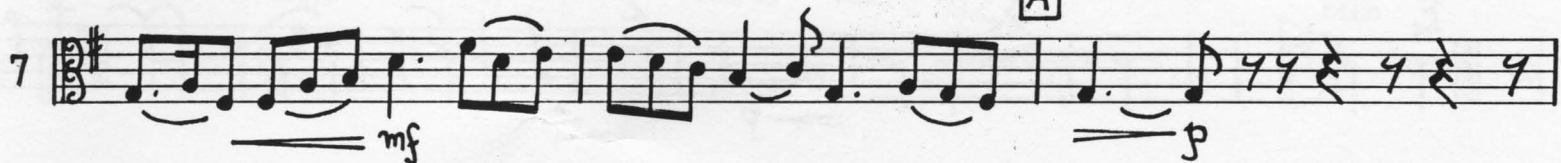
EE



PASTORALE

Andante elegante $\text{♩} = 40$ 

A



10 *solo*
mf

13 *tutti*
mf

17

20 *rit.* *a tempo*
pp *p*

23 *mf* *mp* *mf* *p* *pp* *niente*

Andante $\text{♩} = 72$ *A* 6 *B* **II**

19 *mf* *cresc.* *f = mf* *C*

26 *p* *f* *D*

35 *mf* *mp*

Va.

7.

42 *p* *pp* *mp* *accel.* *E* $\text{♩} = 96$ 11. *F* *pizz.*

61 *mf*

68 *G*

76

83 3 *pizz.* *f* *H*

92

99 4 *I* *pizz.* *mf* 2 *mf*

111 10

127 *J* *meno mosso* $\text{♩} = 80$ *brass* 7 *chorus* 22 *K* *subito* $\text{♩} = 60$ (in 1) *'cello* 3

A musical score for Violoncello (Va.) in D major, 4/4 time. The score consists of eight staves of music. The first staff (measures 42-51) includes dynamics *p*, *pp*, and *mp*, and features an acceleration to 96 beats per minute. The second staff (measures 52-60) has a *mf* dynamic. The third staff (measures 61-67) is marked with a *G* chord box. The fourth staff (measures 68-75) continues the melodic line. The fifth staff (measures 76-82) includes a triplet of eighth notes and a *pizz.* marking. The sixth staff (measures 83-91) has a *f* dynamic and a *H* chord box. The seventh staff (measures 92-98) continues the melody. The eighth staff (measures 99-110) includes a *pizz.* marking and a *mf* dynamic. The ninth staff (measures 111-126) features a decuplet of eighth notes. The final staff (measures 127-134) includes a *meno mosso* tempo change to 80 beats per minute, a *brass* section, a *chorus* section, and a *subito* tempo change to 60 beats per minute in 1/4 time, with a *'cello* section.

[illegible]

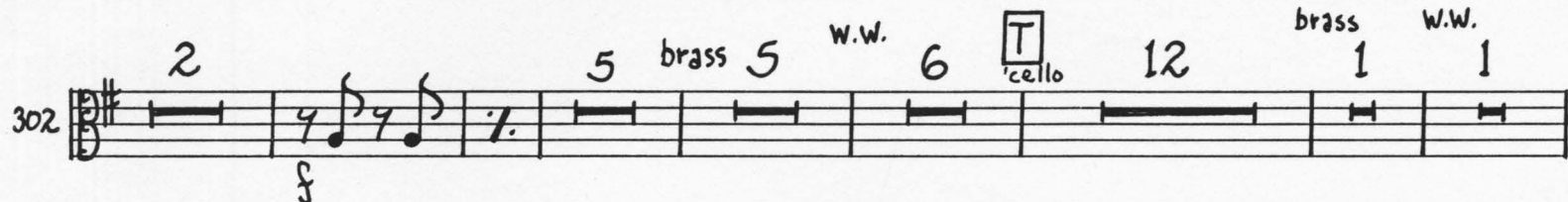
Va.

9.

poco rit.

[S] Allegro animato $\text{♩} = 108$

brass 8 W.W. 5 tutti pizz



[U] arco

